

# **BOLETIN MENSUAL**

## **MONTHLY REPORT**

**AGOSTO 2009**  
**AUGUST 2009**

Está permitida la reproducción total o parcial de este documento citando la fuente.  
Esta es una publicación de la Comisión Chilena del Cobre, institución autónoma de carácter público  
que tiene entre su misión la difusión de la actividad minera.

Agustinas 1161, 4° piso. Teléfono (56 2) 3828100. [www.cochilco.cl](http://www.cochilco.cl)  
Total or partial reproduction is allowed, indicating its source: "Comisión Chilena del Cobre"

<b>I. RESUMEN PRINCIPALES ESTADISTICAS AGOSTO 2009</b>	
<i>MAIN STATISTICS SUMMARY-AUGUST 2009</i>	
<b>II. ANTECEDENTES DE PRECIOS / PRICE INFORMATION</b>	
2.1 Precio del cobre refinado, nominal y real; B.M.L. y COMEX; mensual 2006 - 2009	1
<i>Refined copper prices, nominal and constant; LME and COMEX; 2006-2009 monthly</i>	
2.2 Precio del cobre refinado, nominal y real; B.M.L. y COMEX; anual 1935 - 2009	2
<i>Refined copper prices, nominal and constant; LME and COMEX; 1935-2009 annual</i>	
2.3 Precio promedio del cobre refinado en la B.M.L., mensual, acumulado anual y 12 meses, nominal	3
<i>LME refined copper average price; monthly, accumulated per annum, and 12 months, nominal</i>	
2.4 Precios diarios del cobre en bolsas - cátodos grado "A", Agosto 2009	4
<i>Exchanges daily copper prices - A grade cathodes, August 2009</i>	
2.5 Stocks de cobre en bolsas-cátodos grado "A"	5
<i>Copper warehouse stocks - A grade cathodes</i>	
2.6 Volúmenes de cobre transado en bolsas - cátodos grado "A"	6
<i>Copper ring volume - A grade cathodes</i>	
2.7 Volúmenes e intereses abiertos de futuros y opciones de cobre en la B.M.L.	7
<i>LME copper futures &amp; option volume and open interest</i>	
2.8 Precio promedio del cobre en Estados Unidos, productores, COMEX y chatarra, nominal	8
<i>Copper average price in U.S.A.: producers, COMEX, and scrap, nominal</i>	
2.9 Precios promedios metales preciosos, nominales	9
<i>Precious metals average prices, nominal</i>	
2.10 Precios diarios Oro: Agosto 2009	10
<i>Gold daily prices: August 2009</i>	
2.11 Precios diarios Plata: Agosto 2009	11
<i>Silver daily prices: August 2009</i>	
2.12 Precios promedios otros metales, nominales	12
<i>Other metals average prices, nominal</i>	
2.13 Precios diarios Otros Metales Bolsa de Metales de Londres, nominal: Agosto 2009	13
<i>Other metals daily prices LME, nominal: August 2009 prices</i>	
2.14 Paridades monedas extranjeras, promedios Banco Central de Chile	14
<i>Parity Central Bank of Chile</i>	
<b>III. ANTECEDENTES DE PRODUCCION Y EXPORTACIONES</b>	
<i>PRODUCTION AND EXPORTS INFORMATION</i>	
3.1 Producción chilena de cobre y molibdeno comerciable	15
<i>Chilean copper and molybdenum production</i>	
3.2 Producción chilena de cobre de mina comerciable por empresa	16
<i>Chilean copper mine production by company</i>	
3.3 Evolución de exportaciones por destinos y productos	17
<i>Exports evolution by destination and type of product</i>	
3.4 Valores de los embarques de exportación de cobre y subproductos	18
<i>Copper and by-products export shipments value</i>	
3.5 Embarques físicos de exportación de cobre y concentrados de molibdenita	19
<i>Copper and molybdenite concentrates export quantity shipments</i>	
3.6 Embarques físicos de exportación de cobre por exportador	20
<i>Copper export shipments quantity by exporter</i>	
3.7 Valores de los embarques de exportación de cobre y subproductos según país de destino - año 2008	21
<i>Copper and by-products export shipments value by destination country - year 2008</i>	
3.8 Destino de los embarques físicos de exportación de cobre - año 2008	22
<i>Copper export shipments quantity by destination country - year 2008</i>	
3.9 Valores de los embarques de exportación de cobre y subproductos según país de destino enero-julio 2009	23
<i>Copper and by-products export shipments value by destination country january-july 2009</i>	
3.10 Destino de los embarques físicos de exportación de cobre enero-julio 2009	24
<i>Copper export shipments quantity by destination country january-july 2009</i>	
3.11 Ventas de cobre refinado a la industria manufacturera nacional	25
<i>Refined copper sales to domestic manufacturing industry</i>	
<b>IV. ANTECEDENTES DE LOS CONTRATOS DE EXPORTACIONES CHILENAS DE CONCENTRADOS Y CATODOS DE COBRE/ CHILEAN COPPER CONCENTRATES AND CATHODES EXPORT CONTRACTS INFORMATION</b>	
4.1 Características de los contratos de exportación de concentrados de cobre - año 2009	27
<i>Characteristics of copper concentrates export contracts - year 2009</i>	
4.2 Compromisos de exportación de concentrados de cobre - año 2009	28
<i>Copper concentrates export agreements - year 2009</i>	
4.3 Características de los contratos de exportación de cátodos de cobre - año 2009	29
<i>Characteristics of copper cathodes export contracts - year 2009</i>	
4.4 Compromisos de exportación de catodos de cobre - año 2009	30
<i>Copper cathodes export agreements - year 2009</i>	

## Resumen Principales Estadísticas Agosto 2009 Main Statistics Summary - August 2009

### Precio del Cobre LME / Copper price (¢US\$/lb)

Promedio Mensual Agosto 2009 /	
August 2009 Monthly Avg	279.653
Promedio año a la fecha / Up to date annual average	202.332
Valor Mínimo año 2009 / Minimum value	138.368
Valor Máximo año 2009 / Maximum value	294.404

### Precio del Cobre Comex/ COMEX copper price (¢US/lb)

Promedio Primera Posición Agosto /	
August first position avg	281.060

### Precio Promedio Principales Metales Agosto

<b>August Main Metals Average Price</b>	
Plata / Silver (US\$/ Onza; London Spot)	14.35
Oro / Gold (US\$/ Onza; London Inicial)	949.5
Aluminio /Aluminum (¢US\$/LB; LME)	87.7
Plomo / Lead (¢US\$/LB; LME)	86.2
Zinc (¢US\$/LB; LME)	82.6
Estaño / Tin (¢US\$/LB; Comerciantes EEUU / US Merchants)	698.6
Níquel / Nickel (¢US\$/LB; LME)	890.9
Molibdeno / Molybdenum (US\$/LB; Comerciantes EEUU)	17.41

### Exportaciones Chilenas de Cobre (Millones de US\$)

<b>Chilean Copper Exports (USD Millions)</b>	
Jul / Jul 2009	2,354.9

<b>Acumulado / Accumulated:</b>	
Ene-Jul 2008/ Jan-Jul 2008	24,379.3
Ene-Jul 2009/ Jan-Jul 2009	12,139.4
<b>Variación / Variation</b>	<b>-50.2%</b>

### Stocks Cobre Bolsas / Metal Exchanges Copper Stocks (TMF)

	31-07-2009	31-08-2009	Variación % / % Variation
LME	280,875	298,925	6.4%
COMEX	49,856	48,270	-3.2%
SHANGHAI	51,135	86,625	69.4%
<b>TOTAL</b>	<b>381,866</b>	<b>433,820</b>	<b>13.6%</b>

### Producción Chilena de Cobre Comercializable (Miles de TMF)

<b>Chilean Copper Production (thousand FMT)</b>	
Jul / Jul 2009	421.3

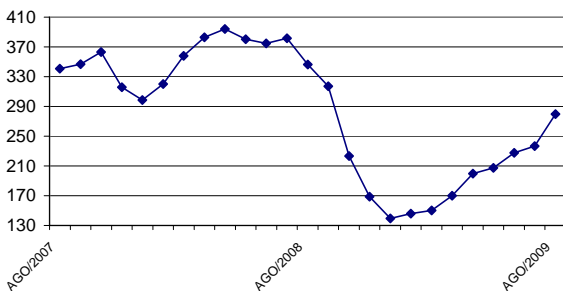
<b>Acumulado / Accumulated:</b>	
Ene-Jul 2008/ Jan-Jul 2008	3,109.1
Ene-Jul 2009/ Jan-Jul 2009	2,997.6
<b>Variación / Variation</b>	<b>-3.6%</b>

### Exportaciones Chilenas de Cobre (Miles de TMF)

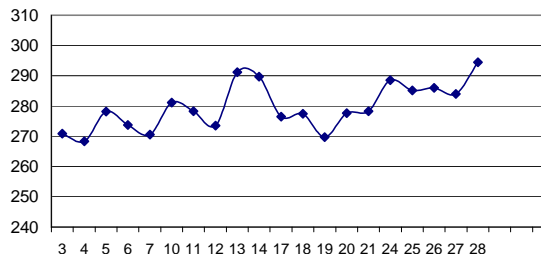
<b>Chilean Copper Exports (Thousands FMT)</b>	
Jul / Jul 2009	495.2

<b>Acumulado / Accumulated:</b>	
Ene-Jul 2008/ Jan-Jul 2008	3,264.5
Ene-Jul 2009/ Jan-Jul 2009	3,183.0
<b>Variación / Variation</b>	<b>-2.5%</b>

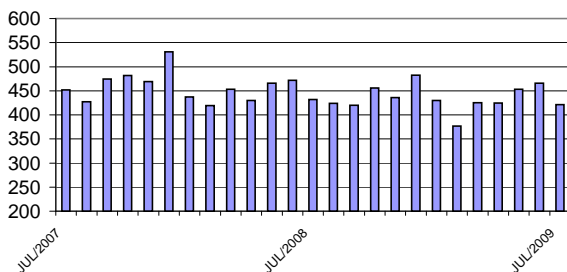
**Precio Promedio Mensual Cobre  
¢US\$/lb  
Copper Monthly Average Price**



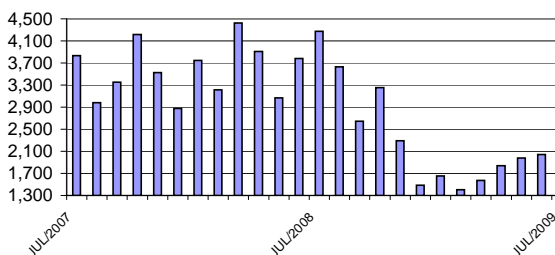
**Evolución diaria Precio del Cobre LME  
(¢US\$/lb; agosto 2009)  
Daily copper price evolution - august 2009**



**Producción Chilena de Cobre Comercializable  
(miles de TMF)  
Chilean Copper Production (thousand FMT)**



**Valor de Exportaciones de Cobre y  
Subproductos  
(Millones de US\$; FOB)  
Copper and by-products exports (USD millions; FOB)**



**ANTECEDENTES DE PRECIOS /  
PRICE INFORMATION**

**PRECIO DEL COBRE REFINADO, NOMINAL Y REAL**  
(Centavos de dólar por libra)  
**REFINED COPPER PRICES, NOMINAL AND CONSTANT (USD cents/lb.)**

	NOMINAL		REAL / CONSTANT(1)	
	B.M.L. / LME	COMEX	B.M.L./ LME	COMEX
ENE/ JAN / 2006	214.746	218.258	225.7	229.4
FEB	225.998	225.079	241.2	240.2
MAR	231.461	232.409	246.4	247.5
ABR/ APR	289.745	296.853	304.6	312.0
MAY	364.954	375.861	380.1	391.5
JUN	326.478	339.648	339.5	353.1
JUL	349.815	362.321	362.2	375.1
AGO/ AUG	349.069	353.061	359.0	363.2
SEP	344.837	346.358	360.1	361.6
OCT	340.212	339.400	362.2	361.4
NOV	318.838	316.560	334.5	332.1
DIC/ DEC	302.778	301.413	315.8	314.3
ENE-DIC/ JAN-DEC	305.295	308.935	319.3	323.5
ENE/ JAN / 2007	257.171	258.305	270.8	272.0
FEB	257.479	259.661	266.6	268.8
MAR	292.680	292.270	298.6	298.1
ABR/ APR	352.281	350.840	355.0	353.5
MAY	348.457	348.248	347.3	347.0
JUN	339.100	338.764	337.0	336.6
JUL	361.691	361.595	356.7	356.6
AGO/ AUG	340.807	336.783	341.4	337.4
SEP	346.952	345.616	345.4	344.0
OCT	363.256	358.887	359.1	354.8
NOV	316.005	312.924	304.9	301.9
DIC/ DEC	298.812	302.170	288.9	292.2
ENE-DIC/ JAN-DEC	323.246	322.172	322.6	321.9
ENE/ JAN / 2008	320.283	320.171	305.6	305.5
FEB	357.780	358.955	338.2	339.3
MAR	382.800	381.108	351.8	350.3
ABR/ APR	393.942	393.939	356.4	356.4
MAY	380.235	377.421	334.0	331.5
JUN	374.694	368.974	322.7	317.8
JUL	381.655	375.939	320.7	315.9
AGO/ AUG	346.304	343.640	300.5	298.2
SEP	317.100	314.293	278.1	275.7
OCT	223.426	218.565	207.0	202.5
NOV	168.600	168.497	164.7	164.6
DIC/ DEC	139.343	138.798	140.8	140.3
ENE-DIC/ JAN-DEC	315.316	313.358	285.0	283.2
ENE/ JAN / 2009	146.088	147.848	147.4	149.1
FEB	150.353	150.639	153.4	153.7
MAR	170.086	171.698	174.7	176.4
ABR/ APR	199.878	204.614	204.6	209.5
MAY	207.230	210.613	210.3	213.7
JUN	227.429	228.339	225.6	226.5
JUL	236.573	238.555	236.6	238.6
AGO/ AUG	279.653	281.060	279.7	281.1
ENE-AGO/ JAN-AUG / 2009	202.332	204.171	204.0	206.1
ENE-AGO/ JAN-AUG / 2008	367.125	365.018	328.7	326.9
VARIACION % / % VARIATION				
ENE-AGO/ JAN-AUG 2009/2008	-44.9	-44.1	-37.9	-37.0

(1) Deflactor: Índice de Precios al por Mayor de Estados Unidos (PPI, all commodities), base julio 2009=100./ Deflator: U.S. Producer Price Index (PPI, all Commodities). July 2009 = 100.

**PRECIO DEL COBRE REFINADO, NOMINAL Y REAL**  
(Centavos de dólar por libra)  
**REFINED COPPER PRICES, NOMINAL AND CONSTANT (USD cents/lb.)**

AÑO	NOMINAL		REAL / CONSTANT(1)	
	B.M.L. / LME	COMEX	B.M.L./ LME	COMEX
1935	6.973	N.D.	87.3	N.D.
1936	8.531	N.D.	106.0	N.D.
1937	12.021	N.D.	139.3	N.D.
1938	8.885	N.D.	113.7	N.D.
1939	8.453	N.D.	109.8	N.D.
1940	10.601	N.D.	135.6	N.D.
1941	11.159	N.D.	127.6	N.D.
1942	11.168	N.D.	113.5	N.D.
1943	11.168	N.D.	108.4	N.D.
1944	11.168	N.D.	107.7	N.D.
1945	11.155	N.D.	105.8	N.D.
1946	13.893	N.D.	115.4	N.D.
1947	23.477	N.D.	158.4	N.D.
1948	24.116	N.D.	150.4	N.D.
1949	21.899	N.D.	143.8	N.D.
1950	22.353	N.D.	141.4	N.D.
1951	27.541	N.D.	156.5	N.D.
1952	32.349	N.D.	188.7	N.D.
1953	32.180	N.D.	190.3	N.D.
1954	31.265	N.D.	184.3	N.D.
1955	43.898	42.729	258.7	251.9
1956	41.072	39.821	234.1	227.0
1957	27.455	27.227	152.0	150.7
1958	24.730	25.279	135.2	138.2
1959	29.735	31.153	162.0	169.7
1960	30.751	30.732	167.5	167.4
1961	28.724	29.933	157.0	163.6
1962	29.263	29.227	159.4	159.2
1963	29.301	29.796	160.1	162.8
1964	44.110	42.940	241.1	234.7
1965	58.734	50.461	314.0	269.8
1966	69.465	63.159	360.3	327.6
1967	51.127	50.388	264.4	260.5
1968	56.101	51.125	283.3	258.2
1969	66.563	63.863	322.9	309.8
1970	64.195	61.275	300.4	286.8
1971	49.266	49.050	223.3	222.3
1972	48.556	49.140	210.7	213.2
1973	80.776	78.445	307.9	299.1
1974	93.272	90.156	306.4	295.8
1975	55.942	55.543	165.7	164.3
1976	63.611	64.072	179.5	181.0
1977	59.290	60.294	158.1	160.7
1978	61.886	62.172	152.6	153.4
1979	89.830	88.466	197.4	193.9
1980	99.174	96.758	191.2	186.7
1981	78.949	78.655	139.3	138.6
1982	67.057	65.820	116.0	113.7
1983	72.173	71.901	123.2	122.7
1984	62.449	61.320	104.1	102.1
1985	64.281	60.988	107.6	102.1
1986	62.287	61.649	107.4	106.3
1987	81.086	77.837	135.5	130.5
1988	117.937	114.600	190.5	184.9
1989	129.113	124.911	198.9	192.3
1990	120.879	119.085	179.3	176.9
1991	106.066	104.875	157.1	155.4
1992	103.573	102.721	152.5	151.4
1993	86.713	85.283	126.1	123.9
1994	104.903	107.052	149.9	153.3
1995	133.198	134.717	184.3	186.5
1996	103.894	105.872	140.9	143.3
1997	103.224	103.579	139.8	140.2
1998	74.974	75.077	104.1	104.2
1999	71.380	72.111	98.1	99.1
2000	82.294	83.971	107.0	109.2
2001	71.566	72.567	92.0	93.3
2002	70.647	71.672	93.2	94.4
2003	80.734	81.050	100.9	101.3
2004	130.106	128.972	153.0	151.8
2005	167.087	168.227	182.7	184.1
2006	305.295	308.935	319.3	323.5
2007	323.246	322.172	322.6	321.9
2008	315.316	313.358	285.0	283.2
ENE-AGO/ JAN-AUG / 2009	202.332	204.171	204.0	206.1
ENE-AGO/ JAN-AUG / 2008	367.125	365.018	328.7	326.9
VARIACION %				
ENE-AGO/ JAN-AUG 2009/2008	-44.9	-44.1	-37.9	-37.0

(1) Deflactor: Índice de Precios al por Mayor de Estados Unidos (PPI, all commodities), base julio 2009=100/  
Deflator: U.S. Producer Price Index (PPI, all Commodities). July 2009 = 100.

N.D. Información no disponible / Not Available

**BOLSA DE METALES DE LONDRES**  
**PRECIO PROMEDIO DEL COBRE REFINADO, NOMINAL**  
**LONDON METAL EXCHANGE - REFINED COPPER AVERAGE PRICE, NOMINAL**  
(Centavos de dólar por libra. ¢US\$/lb)  
**PRECIO CONTADO VENDEDOR / SELLER SPOT PRICE**

**COBRE GRADO "A" / A GRADE COPPER**

	PERIODO / PERIOD	ANUAL(1) / ANNUAL	12 MESES / 12 MONTHS
2004	130.106	-	-
2005	167.087	-	-
2006	305.295	-	-
2007	323.246	-	-
2008	315.316	-	-
ENE/ JAN / 2006	214.746	214.746	172.885
FEB	225.998	220.235	179.084
MAR	231.461	224.269	185.932
ABR/ APR	289.745	238.642	196.010
MAY	364.954	264.395	213.878
JUN	326.478	275.322	228.367
JUL	349.815	286.036	243.796
AGO/ AUG	349.069	294.291	259.170
SEP	344.837	299.907	273.658
OCT	340.212	304.109	286.875
NOV	318.838	305.500	297.761
DIC/ DEC	302.778	305.295	305.295
ENE/ JAN / 2007	257.171	257.171	308.626
FEB	257.479	257.318	311.115
MAR	292.680	269.474	316.775
ABR/ APR	352.281	288.430	321.365
MAY	348.457	300.551	319.996
JUN	339.100	307.027	321.022
JUL	361.691	315.208	322.168
AGO/ AUG	340.807	318.540	321.450
SEP	346.952	321.547	321.525
OCT	363.256	326.072	323.694
NOV	316.005	325.125	323.447
DIC/ DEC	298.812	323.246	323.246
ENE/ JAN / 2008	320.283	320.283	328.756
FEB	357.780	338.595	336.799
MAR	382.800	352.142	344.178
ABR/ APR	393.942	363.089	347.896
MAY	380.235	366.387	350.416
JUN	374.694	367.782	353.382
JUL	381.655	369.938	355.230
AGO/ AUG	346.304	367.125	355.783
SEP	317.100	361.332	353.118
OCT	223.426	346.441	340.406
NOV	168.600	331.176	328.855
DIC/ DEC	139.343	315.316	315.316
ENE/ JAN / 2009	146.088	146.088	300.837
FEB	150.353	148.169	284.149
MAR	170.086	155.822	266.958
ABR/ APR	199.878	166.438	250.613
MAY	207.230	174.037	237.054
JUN	227.429	183.509	224.793
JUL	236.573	191.812	211.603
AGO/ AUG	279.653	202.332	206.334
PROMEDIO A:/ AVERAGE UP TO:			
AGO/Aug/ 2009	279.653	202.332	206.334
AGO/Aug/ 2008	346.304	367.125	355.783
VARIACION %/ % VARIATION			
AGO/Aug 2009/2008	-19.2	-44.9	-42.0

(1) Precio promedio a la fecha./ Up to date average price.  
Fuente / Source: Elaborado por la Comisión Chilena del Cobre

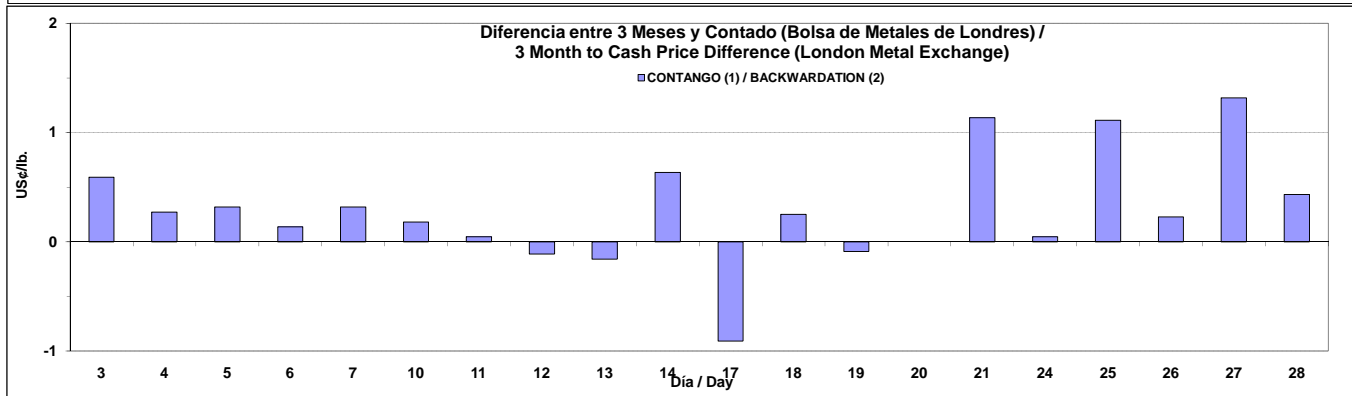
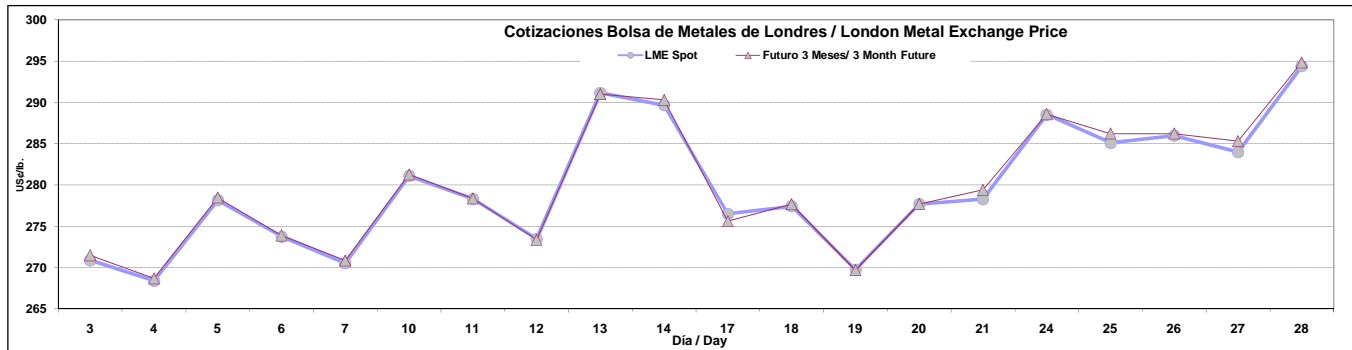
**PRECIOS DIARIOS DEL COBRE EN BOLSAS - CATODOS GRADO "A"**  
EXCHANGES DAILY COPPER PRICES - A GRADE CATHODES  
AGOSTO/ AUGUST 2009

DIA DAY	BOLSA DE METALES DE LONDRES PRECIOS DIARIOS LONDON METAL EXCHANGE REFINED COPPER DAILY PRICES								COMEX NEW YORK MERCANTILE EXCHANGE			
	Dólar por tonelada métrica.(US\$/T.M. - US\$/MT)				Centavos de dólar por libra. ¢US\$/lb				Centavos de dólar por libra. ¢US\$/lb			
	CONTADO/ SPOT	FUTURO/ FUTURE (3m)	FUTURO/ FUTURE (15m)	FUTURO/ FUTURE (27m)	CONTADO/ SPOT	FUTURO/ FUTURE (3m)	FUTURO/ FUTURE (15m)	FUTURO/ FUTURE (27m)	1°Pos 1 Pos	HG HG 4 Pos	16°Pos HG 16 Pos	24°Pos HG 24 Pos
3	5,972.00	5,985.00	5,935.00	5,875.00	270.885	271.475	269.207	266.486	273.15	274.55	273.95	273.85
4	5,917.00	5,923.00	5,880.00	5,805.00	268.391	268.663	266.712	263.310	278.90	280.25	279.65	279.60
5	6,132.00	6,139.00	6,090.00	6,005.00	278.143	278.460	276.238	272.382	280.65	281.95	280.95	280.85
6	6,035.00	6,038.00	5,985.00	5,910.00	273.743	273.879	271.475	268.073	274.75	276.00	275.45	275.35
7	5,964.00	5,971.00	5,935.00	5,865.00	270.523	270.840	269.207	266.032	278.15	279.45	278.75	278.60
10	6,197.00	6,201.00	6,150.00	6,065.00	281.091	281.273	278.959	275.104	276.65	278.05	277.45	276.55
11	6,136.00	6,137.00	6,095.00	6,015.00	278.324	278.370	276.465	272.836	273.35	274.60	274.20	273.30
12	6,029.00	6,026.50	5,990.00	5,920.00	273.471	273.358	271.702	268.527	282.05	283.20	282.25	280.85
13	6,419.00	6,415.50	6,345.00	6,250.00	291.161	291.002	287.804	283.495	291.05	292.30	290.40	288.35
14	6,386.00	6,400.00	6,330.00	6,225.00	289.664	290.299	287.124	282.361	283.40	284.50	283.05	281.00
17	6,096.00	6,076.00	6,020.00	5,925.00	276.510	275.603	273.063	268.754	276.80	277.95	276.90	274.85
18	6,116.00	6,121.50	6,045.00	5,935.00	277.417	277.667	274.197	269.207	275.95	276.85	274.40	271.95
19	5,947.00	5,945.00	5,870.00	5,760.00	269.751	269.661	266.259	261.269	275.70	276.55	274.00	271.60
20	6,122.00	6,122.00	6,035.00	5,915.00	277.689	277.689	273.743	268.300	273.80	274.85	272.70	270.35
21	6,135.00	6,160.00	6,070.00	5,960.00	278.279	279.413	275.331	270.341	287.90	288.85	286.50	284.15
24	6,361.00	6,362.00	6,275.00	6,150.00	288.530	288.576	284.629	278.959	291.40	292.50	289.65	287.25
25	6,285.50	6,310.00	6,235.00	6,105.00	285.106	286.217	282.815	276.918	285.40	286.80	284.55	282.20
26	6,305.00	6,310.00	6,245.00	6,120.00	285.990	286.217	283.269	277.599	285.55	287.10	285.80	283.45
27	6,261.00	6,290.00	6,240.00	6,130.00	283.994	285.310	283.042	278.052	284.55	286.50	285.60	283.25
28	6,490.50	6,500.00	6,430.00	6,330.00	294.404	294.835	291.660	287.124	292.30	295.05	292.05	290.00
31	Feriado/Holiday								280.80	282.65	279.75	277.45
<b>PROMEDIO / AVERAGE</b>	<b>6,165.30</b>	<b>6,171.63</b>	<b>6,110.00</b>	<b>6,013.25</b>	<b>279.653</b>	<b>279.940</b>	<b>277.145</b>	<b>272.756</b>	<b>281.060</b>	<b>282.405</b>	<b>280.857</b>	<b>279.276</b>

FUENTE / SOURCE: Reuters

NOTA / NOTE: Comex tiene precios desde la posición 1 (mes actual) a la 24 (23 meses en adelante) / Comex prices start at 1st position (current month) and ends at 24th position (23 months ahead).

N.D. Información no disponible/ No data available, No trade /suspended



(1) Contango: Precio futuro mayor que precio contado./ Future price higher than spot price  
(2) Backwardation: Precio futuro menor que precio contado./ Future price lower than spot price

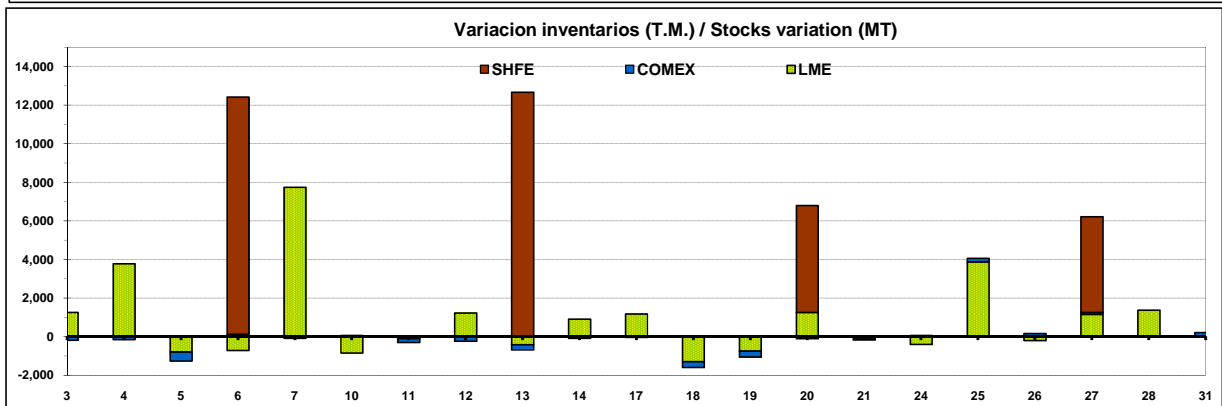
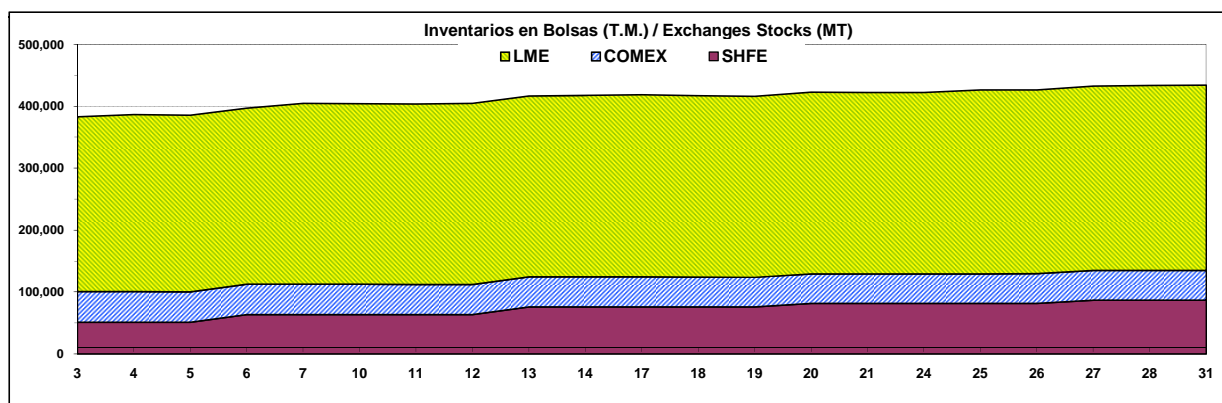
**STOCKS DE COBRE EN BOLSAS - CATODOS GRADO"A"**

COPPER WAREHOUSE STOCKS - A GRADE CATHODES

AGOSTO/ AUGUST 2009

T.M. / M.T.

Stocks fin periodo End of period stocks	BOLSA DE METALES DE LONDRES/ LONDON METAL EXCHANGE		BOLSA DE NUEVA YORK / NEW YORK MERCANTILE EXCHANGE		BOLSA DE SHANGAI / SHANGHAI FUTURE EXCHANGE		TOTAL	VARIACION
T.M./MT	TOTAL	Variación/ Variation	TOTAL	Variación/ Variation	TOTAL	Variación/ Variation	TOTAL	VARIATION
31.12.2008	339,775		31,311		17,822		<b>388,908</b>	
31.07.2009	280,875	-58,900	49,856	18,545	51,135	33,313	<b>381,866</b>	-7,042
3	282,125	1,250	49,665	-191	51,135	0	<b>382,925</b>	1,059
4	285,900	3,775	49,514	-151	51,135	0	<b>386,549</b>	3,624
5	285,100	-800	49,050	-464	51,135	0	<b>385,285</b>	-1,264
6	284,375	-725	49,174	124	63,434	12,299	<b>396,983</b>	11,698
7	292,125	7,750	49,090	-84	63,434	0	<b>404,649</b>	7,666
10	291,275	-850	49,147	57	63,434	0	<b>403,856</b>	-793
11	291,175	-100	48,944	-203	63,434	0	<b>403,553</b>	-303
12	292,400	1,225	48,705	-239	63,434	0	<b>404,539</b>	986
13	291,975	-425	48,436	-269	76,107	12,673	<b>416,518</b>	11,979
14	292,875	900	48,352	-84	76,107	0	<b>417,334</b>	816
17	294,050	1,175	48,308	-44	76,107	0	<b>418,465</b>	1,131
18	292,750	-1,300	48,011	-297	76,107	0	<b>416,868</b>	-1,597
19	292,000	-750	47,704	-307	76,107	0	<b>415,811</b>	-1,057
20	293,250	1,250	47,597	-107	81,650	5,543	<b>422,497</b>	6,686
21	293,125	-125	47,546	-51	81,650	0	<b>422,321</b>	-176
24	292,725	-400	47,613	67	81,650	0	<b>421,988</b>	-333
25	296,600	3,875	47,796	183	81,650	0	<b>426,046</b>	4,058
26	296,400	-200	47,963	167	81,650	0	<b>426,013</b>	-33
27	297,550	1,150	48,064	101	86,625	4,975	<b>432,239</b>	6,226
28	298,925	1,375	48,064	0	86,625	0	<b>433,614</b>	1,375
31	298,925	0	48,270	206	86,625	0	<b>433,820</b>	206



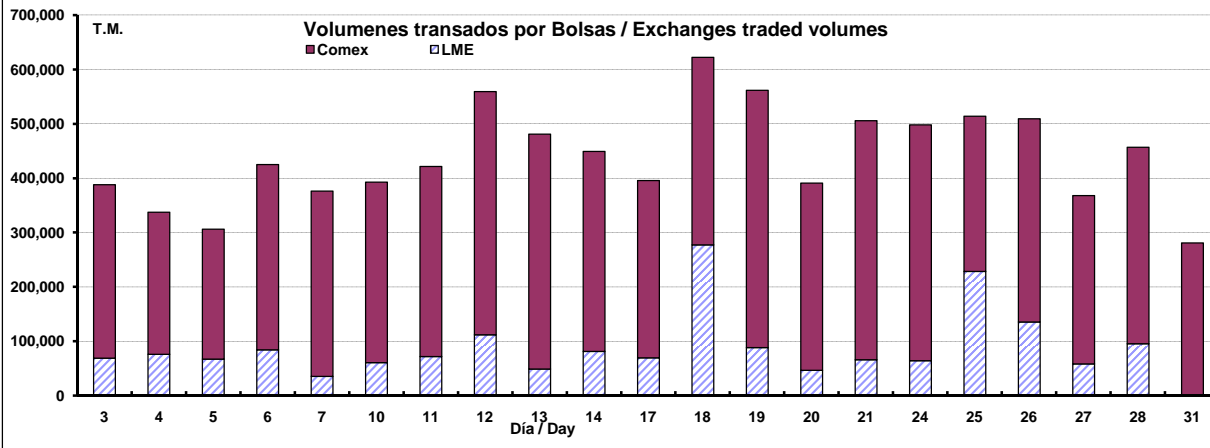
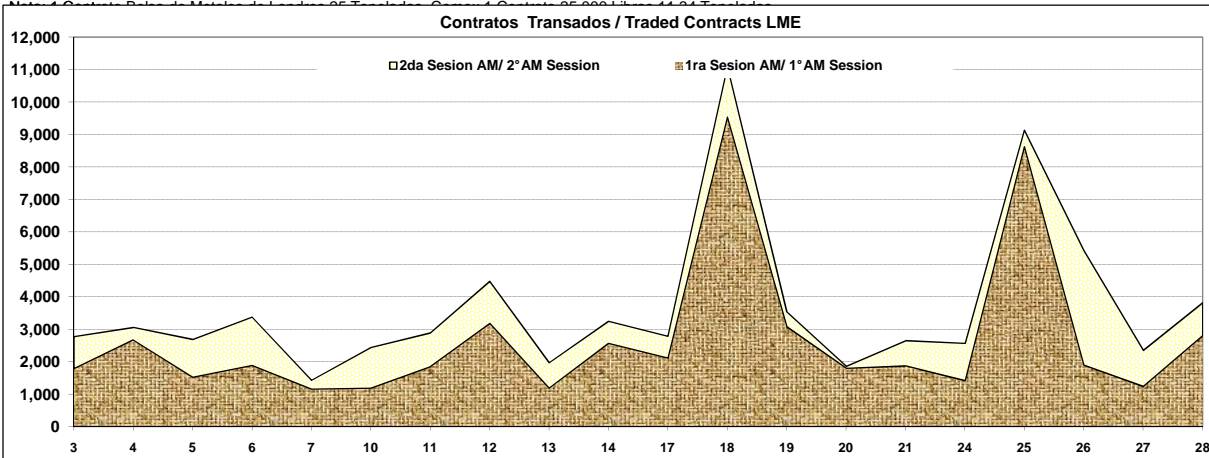
Fuente / Source: Elaborado por la Comisión Chilena del Cobre

**VOLUMENES DE COBRE TRANSADO EN BOLSAS - CATODOS GRADO "A"**  
**COPPER RING VOLUME - A GRADE CATHODES**  
**AGOSTO / AUGUST 2009**  
**T.M. / M.T.**

DIA DAY	BOLSA DE METALES DE LONDRES/ LONDON METAL EXCHANGE						NEW YORK MERCANTILE EXCHANGE COMEX			
	1ra. Sesión AM/ Morning Ring Sessions			2da. Sesión AM / Morning Ring sessions			Total contratos	TOTAL T.M.	Total contratos	TOTAL MT.
	1°	2°	Kerb	1°	2°	Kerb	Total contratos	TOTAL MT	Total contratos	TOTAL MT
3	1378	367	50	354	626	0	2,775	69,375	28,119	318,864
4	1910	764	0	285	100	0	3,059	76,475	23,021	261,054
5	1068	380	80	112	1052	0	2,692	67,300	21,072	238,952
6	1146	741	0	297	1094	100	3,378	84,450	30,024	340,466
7	964	197	0	150	120	0	1,431	35,775	30,024	340,466
10	754	333	100	420	832	0	2,439	60,975	29,239	331,564
11	1113	101	640	710	327	0	2,891	72,275	30,821	349,504
12	2698	225	260	792	506	0	4,481	112,025	39,440	447,242
13	814	360	20	310	470	0	1,974	49,350	38,052	431,502
14	2158	413	0	561	120	0	3,252	81,300	32,436	367,818
17	1353	761	0	342	332	0	2,788	69,700	28,745	325,963
18	9324	140	69	477	1080	0	11,090	277,250	30,407	344,809
19	2433	507	140	34	430	0	3,544	88,600	41,731	473,221
20	1364	440	0	30	30	0	1,864	46,600	30,355	344,220
21	1704	172	0	120	656	0	2,652	66,300	38,751	439,429
24	812	560	50	80	1068	0	2,570	64,250	38,273	434,008
25	8094	530	0	240	240	32	9,136	228,400	25,204	285,808
26	312	1473	110	2130	1402	0	5,427	135,675	32,974	373,919
27	694	550	0	720	390	0	2,354	58,850	27,253	309,044
28	2454	357	0	349	560	100	3,820	95,500	31,859	361,275
31		Feriado/Holiday							24,797	281,193

FUENTE / SOURCE: Reuters

N.D. Información no disponible.

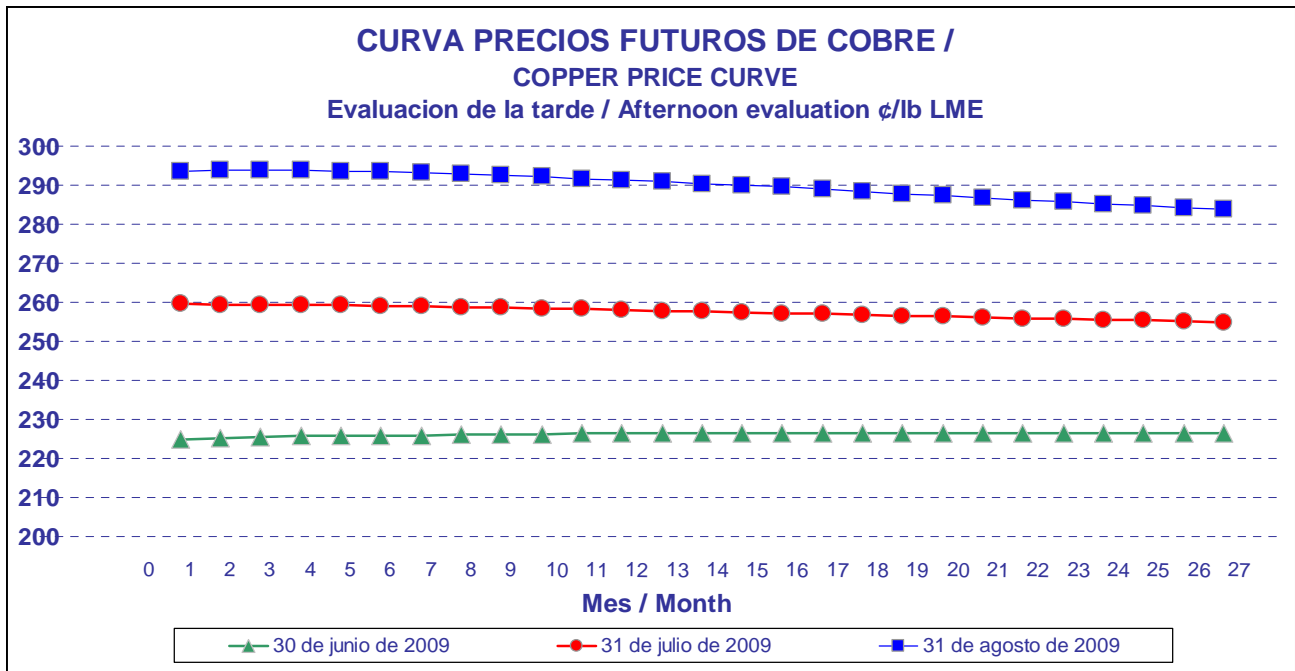


Fuente / Source: Elaborado por la Comisión Chilena del Cobre

**VOLUMENES E INTERESES ABIERTOS DE FUTUROS Y OPCIONES DE COBRE BOLSA DE METALES DE LONDRES**  
**LONDON METAL EXCHANGE COPPER FUTURES & OPTION VOLUME AND OPEN INTEREST**  
(Numero de contratos / Contract number)  
**AGOSTO / AUGUST 2009**

Dia / Day	VOLUMEN / VOLUME			INTERESES ABIERTOS / OPEN INTEREST	
	Futuros / Futures	Opciones / Options	TOTAL/ Total	Futuros / Futures	Opciones / Options
03	82,363	5,788	88,151	251,238	225,858
04	85,534	3,688	89,222	251,629	227,197
05	99,035	10,967	110,002	254,845	230,958
06	89,607	4,001	93,608	257,653	232,338
07	84,198	7,688	91,886	257,395	216,624
10	76,620	7,762	84,382	259,254	218,490
11	79,515	18,592	98,107	259,470	222,181
12	94,357	5,231	99,588	257,514	222,597
13	111,772	14,109	125,881	260,463	225,315
14	88,481	10,554	99,035	262,432	227,312
17	109,013	8,078	117,091	261,857	229,338
18	128,435	5,802	134,237	258,709	231,179
19	118,580	3,870	122,450	260,234	231,577
20	100,667	4,706	105,373	260,574	232,984
21	102,560	3,797	106,357	262,528	233,263
24	122,991	4,717	127,708	264,195	234,817
25	95,527	6,996	102,523	264,245	236,282
26	125,301	4,816	130,117	261,974	237,617
27	73,203	4,173	77,376	260,136	238,377
28	118,735	8,201	126,936	258,266	239,650
<b>TOTAL/TOTAL</b>	<b>1,986,494</b>	<b>143,536</b>	<b>2,130,030</b>		

N.D. Información no disponible/ No data available, No trade /suspended  
Fuente / Source: Elaborado por la Comisión Chilena del Cobre



Fuente / Source: London Metals Exchange

## PRECIO PROMEDIO DEL COBRE EN ESTADOS UNIDOS, NOMINAL

(Centavos de dólar por libra. ¢US\$/lb)  
COPPER AVERAGE PRICE IN USA, NOMINAL

	PRODUCTORES NORTEAMERICANOS North American Producers	COMEX COBRE GRADO "A" A Grade Copper	PRECIO CHATARRA Scrap Price
	W.B.(1)	1er.MES / First Month	Nº 2 (2)
2004	133.945	128.972	19.542
2005	173.493	168.227	17.050
2006	314.751	308.935	41.483
2007	328.002	322.172	36.908
2008	319.163	313.358	30.867
ENE/ JAN / 2006	224.000	218.258	15.250
FEB	230.905	225.079	11.750
MAR	238.235	232.409	20.200
ABR/ APR	302.679	296.853	32.750
MAY	381.687	375.861	37.600
JUN	345.474	339.648	44.250
JUL	368.147	362.321	75.000
AGO/ AUG	358.887	353.061	75.000
SEP	352.184	346.358	63.750
OCT	345.226	339.400	50.000
NOV	322.386	316.560	41.000
DIC/ DEC	307.200	301.413	31.250
ENE/ JAN / 2007	264.131	258.305	20.000
FEB	265.487	259.661	17.250
MAR	298.096	292.270	20.000
ABR/ APR	356.666	350.840	31.000
MAY	354.074	348.248	37.400
JUN	344.590	338.764	41.750
JUL	367.421	361.595	54.000
AGO/ AUG	342.609	336.783	56.000
SEP	351.442	345.616	46.250
OCT	364.713	358.887	58.000
NOV	318.802	312.924	37.500
DIC/ DEC	307.996	302.170	23.750
ENE/ JAN / 2008	326.000	320.171	25.000
FEB	364.781	358.955	31.250
MAR	386.934	381.108	38.250
ABR/ APR	399.765	393.939	33.000
MAY	383.247	377.421	38.750
JUN	374.800	368.974	36.250
JUL	381.765	375.939	41.600
AGO/ AUG	349.211	343.640	26.500
SEP	320.119	314.293	16.250
OCT	224.391	218.565	30.800
NOV	174.323	168.497	31.750
DIC/ DEC	144.624	138.798	21.000
ENE/ JAN / 2009	153.674	147.848	17.500
FEB	156.465	150.639	13.250
MAR	177.524	171.698	11.000
ABR/ APR	210.440	204.614	10.800
MAY	216.439	210.613	11.500
JUN	234.165	228.339	22.600
JUL	244.381	238.555	29.500
AGO/ AUG	286.886	281.060	37.250
Ene-Ago/Jan-Aug/ 2009	209.997	204.171	19.175
Ene-Ago/Jan-Aug/ 2008	370.813	365.018	33.825
VARIACION % / % VARIATION			
Ene-Ago/Jan-Aug/ 2009-2008	-43.4	-44.1	-43.3

(1) Cotización/ Quotation Producer Delivered-Metals Week.

(2) Chatarra Nº2 de Estados Unidos: Cotización MW Nº2 Scrap. Las cifras corresponden a descuento respecto al cobre refinado./ US MW Nº2 Scrap. Figures refer to discount over price of refined copper.

FUENTE/ SOURCE: Metals Week, Reuters.

**PRECIOS PROMEDIOS METALES PRECIOSOS, NOMINALES**

( US\$ / onza troy )

**PRECIOUS METALS AVERAGE PRICES, NOMINAL**

	PLATA / SILVER		ORO / GOLD			PLATINO/ PLATINUM
	REINO UNIDO (1)	ESTADOS UNIDOS (2)	REINO UNIDO/ UK		ESTADOS UNIDOS (2)	REINO UNIDO (3)
	UK	USA	INICIAL / INITIAL	FINAL / LAST	USA	UK
2004	6.65	6.69	409.3	409.2	409.3	845.2
2005	7.31	7.34	444.9	444.9	444.8	896.9
2006	11.57	11.57	604.7	604.3	604.0	1,141.7
2007	13.39	13.41	696.9	696.7	696.9	1,304.8
2008	15.02	15.00	872.5	871.7	871.1	1,576.4
ENE/ JAN / 2006	9.15	9.18	549.4	549.9	549.3	1,029.0
FEB	9.53	9.52	555.5	555.0	555.0	1,041.8
MAR	10.38	10.38	557.2	557.1	557.1	1,041.1
ABR/ APR	12.61	12.64	611.9	610.7	610.4	1,101.4
MAY	13.45	13.38	676.8	675.4	674.0	1,264.9
JUN	10.80	10.77	597.9	596.1	596.1	1,188.5
JUL	11.23	11.21	633.1	633.7	634.9	1,228.8
AGO/ AUG	12.18	12.25	631.6	632.6	632.1	1,234.0
SEP	11.68	11.60	600.2	598.2	596.8	1,183.6
OCT	11.56	11.62	586.6	585.8	585.8	1,082.5
NOV	12.93	12.98	626.8	627.8	627.1	1,183.0
DIC/ DEC	13.36	13.30	629.5	629.8	629.4	1,121.5
ENE/ JAN / 2007	12.84	12.87	630.4	631.2	630.9	1,148.4
FEB	13.91	13.95	665.1	664.7	664.4	1,204.6
MAR	13.18	13.16	655.9	654.9	654.9	1,218.8
ABR/ APR	13.74	13.73	680.0	679.4	679.2	1,278.4
MAY	13.15	13.19	668.3	666.9	667.9	1,301.3
JUN	13.14	13.15	655.7	655.5	655.4	1,286.2
JUL	12.91	12.95	665.3	665.3	665.8	1,303.1
AGO/ AUG	12.36	12.33	664.5	665.4	665.2	1,264.7
SEP	12.83	12.93	710.6	712.7	714.8	1,307.7
OCT	13.67	13.72	754.5	754.6	754.6	1,410.7
NOV	14.70	14.67	808.3	806.2	805.9	1,448.7
DIC/ DEC	14.30	14.31	803.6	803.2	803.2	1,484.9
ENE/ JAN / 2008	15.96	16.06	887.8	889.6	890.5	1,585.8
FEB	17.57	17.67	924.3	922.3	923.3	1,999.7
MAR	19.51	19.22	971.1	968.4	966.3	2,046.5
ABR/ APR	17.50	17.51	911.6	909.7	909.7	1,988.4
MAY	17.05	17.05	889.1	888.7	887.6	2,054.7
JUN	16.97	17.04	889.5	889.5	889.5	2,038.2
JUL	18.03	18.06	941.2	939.8	940.2	1,904.4
AGO/ AUG	14.69	14.58	840.4	839.0	838.3	1,488.5
SEP	12.37	12.19	824.9	829.9	830.3	1,223.0
OCT	10.44	10.43	812.8	806.6	806.6	912.6
NOV	9.87	9.87	757.9	760.9	754.9	840.3
DIC/ DEC	10.29	10.32	819.9	816.1	816.1	834.8
ENE/ JAN / 2009	11.29	11.40	857.7	858.7	860.0	949.8
FEB	13.41	13.44	939.8	943.2	943.2	1,035.7
MAR	13.12	13.12	926.0	924.3	924.3	1,081.2
ABR/ APR	12.51	12.52	892.7	890.2	890.5	1,162.5
MAY	14.03	14.11	926.9	928.6	927.3	1,130.4
JUN	14.65	14.66	947.8	945.7	945.7	1,217.9
JUL	13.36	13.39	934.3	934.2	934.3	1,162.3
AGO/ AUG	14.35	14.43	949.5	949.4	949.3	1,244.6
Ene-Ago/Jan-Aug/ 2009	13.34	13.38	921.82	921.78	921.82	1,123.03
Ene-Ago/Jan-Aug/ 2008	17.16	17.15	906.87	905.87	905.66	1,888.27
VARIACION % / % VARIATION						
Ene-Ago/Jan-Aug/ 2009-2008	-22.3	-22.0	1.6	1.8	1.8	-40.5

(1) Cotización London Spot.

(2) Cotización Handy & Harman N.Y.

(3) Promedio Cotización London fixing P.M. / Average

FUENTE/ SOURCE: Metals Week.Reuters.

## PRECIOS DIARIOS ORO: AGOSTO 2009

( US\$ / onza troy )

GOLD DAILY PRICES: AUGUST 2009

DIA/ DAY	REINO UNIDO/ UK (1)		COMEX	EE.UU. / USA	EE.UU / USA
	INICIAL / INITIAL	FINAL / LAST	1 Pos / 1 St Pos (US\$/oz)		Handy & Harman (2)
1					
2					
3	954.25	959.75		956.60	959.75
4	953.50	960.50		967.50	960.50
5	964.50	960.50		964.20	960.50
6	960.75	964.00		960.70	964.00
7	960.50	956.00		957.30	956.00
8					
9					
10	953.50	945.00		945.00	945.00
11	946.00	942.75		945.80	942.75
12	943.50	947.25		950.70	947.25
13	956.00	953.50		954.70	953.50
14	957.50	953.50		947.00	953.50
15					
16					
17	937.50	932.75		934.30	932.75
18	938.25	935.00		937.70	935.00
19	934.25	943.00		943.30	943.00
20	943.50	940.50		940.30	940.50
21	941.50	952.50		953.20	952.50
22					
23					
24	953.75	951.50		942.30	951.50
25	947.50	950.50		944.50	950.50
26	949.50	940.50		944.30	940.50
27	943.50	943.00		945.50	943.00
28	950.75	955.50		957.00	955.50
29					
30					
31	Feriado/Holiday	Feriado/Holiday		951.70	948.50
<b>PROMEDIO MES/ MONTH AVG</b>	<b>949.500</b>	<b>949.375</b>		<b>949.695</b>	<b>949.333</b>

(1) Cotización London

(2) Cotización Handy &amp; Harman N.Y.

Fuente / Source: Reuters. Elaborado por la Comisión Chilena del Cobre

**PRECIOS DIARIOS PLATA AGOSTO 2009**

( US\$ / onza troy)

**SILVER DAILY PRICES: AUGUST 2009**

<b>DIA/ DAY</b>	<b>REINO UNIDO/ UK (1)</b>	<b>COMEX EE.UU./ USA 1 Pos / 1 St Pos (US\$/oz)</b>	<b>Handy &amp; Harman N.Y. (2)</b>
1			
2			
3	14.2900	14.2450	14.3800
4	14.0800	14.6880	14.6600
5	14.6700	14.7530	14.7000
6	14.6700	14.6380	14.7300
7	14.6500	14.6610	14.6850
8			
9			
10	14.4700	14.3480	14.4700
11	14.3550	14.3380	14.3150
12	14.2800	14.5780	14.5350
13	15.0700	14.9800	15.0150
14	14.9800	14.7150	14.7100
15			
16			
17	14.1300	13.9710	13.9350
18	14.0900	13.9560	14.0150
19	13.5850	13.8710	13.9600
20	14.0400	13.8760	13.9150
21	14.0100	14.1600	14.2100
22			
23			
24	14.4100	14.1910	14.39
25	14.1100	14.3060	14.3550
26	14.3200	14.2510	14.2850
27	14.2000	14.2160	14.2050
28	14.5400	14.7840	14.7900
29			
30			
31	Feriado/Holiday	14.8980	14.78
<b>PROMEDIO MES/ MONTH AVG</b>	<b>14.34750</b>	<b>14.40114</b>	<b>14.43048</b>

(1) Cotización London Spot.

(2) Cotización Handy & Harman N.Y.

Fuente / Source: Reuters. Elaborado por la Comisión Chilena del Cobre

## PRECIOS PROMEDIOS OTROS METALES, NOMINALES

(Centavos de dólar por libra. ¢US\$/lb)

OTHER METALS AVERAGE PRICES, NOMINAL

	ALUMINIO/ALUMINIUM		PLOMO/ LEAD	ZINC	ESTAÑO/ TIN	NIQUEL/NICKEL		MOLIBDENO/ MOLYBDENUM
	B.M.L/ LME HG SETTL.	EE.UU./USA(1)	B.M.L/ LME SETTL.	B.M.L/ LME SHG SETTL.	EE.UU./USA(2)	B.M.L/ LME SETTL.	EE.UU./USA(2)	OXIDO/ OXIDE (US\$/lb) EE.UU./ USA(2)
2004	77.8	84.0	40.2	47.5	409.4	627.3	634.1	16.40
2005	86.1	91.1	44.3	62.7	360.9	668.8	681.4	31.73
2006	116.6	121.4	58.5	148.6	419.5	1100.2	1098.2	24.75
2007	119.7	122.2	117.0	147.1	679.5	1688.7	1690.5	30.23
2008	116.7	120.5	94.8	85.0	864.5	957.6	987.4	28.73
ENE/ JAN / 2006	107.9	111.8	57.0	94.8	340.1	660.2	640.8	22.39
FEB	111.4	116.9	57.9	100.7	375.9	679.4	694.4	23.50
MAR	110.2	114.8	54.1	109.6	383.6	675.7	694.9	22.84
ABR/ APR	118.9	123.7	53.1	139.9	420.4	813.9	818.4	22.95
MAY	129.8	135.5	52.9	161.7	421.3	956.0	942.5	25.53
JUN	112.4	119.3	43.7	146.3	380.7	941.4	966.4	25.18
JUL	114.0	119.6	47.7	151.5	401.5	1,205.9	1,175.0	24.68
AGO/ AUG	111.6	117.0	53.3	151.8	404.7	1,394.5	1,380.8	26.84
SEP	112.2	117.0	60.9	154.4	428.9	1,366.7	1,363.4	27.14
OCT	120.4	124.1	69.5	173.4	470.3	1,483.4	1,482.2	25.60
NOV	122.6	127.2	73.7	198.8	480.0	1,456.7	1,453.5	25.54
DIC/ DEC	127.6	130.2	78.3	199.8	526.5	1,568.1	1,565.7	24.78
ENE/ JAN / 2007	127.4	129.5	75.6	171.8	531.1	1,669.7	1,617.7	25.01
FEB	128.5	129.5	80.7	150.1	606.3	1,868.1	1,830.9	25.45
MAR	125.3	129.0	86.8	148.4	649.1	2,101.3	2,123.8	27.96
ABR/ APR	127.7	130.8	90.8	161.4	656.1	2,280.1	2,313.9	28.04
MAY	126.8	129.3	95.3	173.7	665.7	2,366.8	2,373.7	31.64
JUN	121.5	123.4	110.0	163.4	663.1	1,892.3	1,849.1	32.69
JUL	124.0	126.2	139.9	160.9	692.5	1,516.2	1,528.5	31.53
AGO/ AUG	114.1	117.4	141.5	147.5	708.5	1,254.3	1,268.0	31.69
SEP	108.5	111.3	146.4	130.7	698.9	1,339.8	1,329.1	31.60
OCT	110.8	113.5	168.7	135.0	747.8	1,408.7	1,422.5	31.86
NOV	113.7	116.4	151.0	115.3	775.1	1,388.5	1,417.8	32.95
DIC/ DEC	108.0	110.7	117.8	106.7	759.8	1,179.0	1,210.5	32.38
ENE/ JAN / 2008	110.9	113.6	118.3	106.1	764.0	1,256.0	1,268.6	33.03
FEB	126.0	128.6	139.7	110.6	804.1	1,268.0	1,296.2	33.35
MAR	136.3	139.9	136.5	113.9	921.4	1,416.4	1,429.6	33.40
ABR/ APR	134.2	138.6	128.0	102.7	1,001.8	1,304.7	1,345.2	32.85
MAY	131.7	135.8	101.4	99.0	1,100.8	1,167.3	1,232.7	32.67
JUN	134.2	137.4	84.5	85.9	1,033.4	1,022.8	1,048.3	33.35
JUL	139.3	142.6	88.2	84.0	1,063.0	914.5	948.4	33.67
AGO/ AUG	125.4	129.0	87.3	78.2	945.4	858.6	878.8	33.84
SEP	114.6	119.2	84.7	78.7	862.2	807.2	854.1	32.94
OCT	96.2	101.9	67.1	59.1	680.1	550.7	569.4	26.12
NOV	84.0	88.1	58.6	52.3	657.4	485.4	510.2	10.00
DIC/ DEC	67.6	71.5	43.7	49.9	540.8	439.4	467.3	9.60
ENE/ JAN / 2009	64.1	67.6	51.4	53.9	546.5	512.9	534.6	9.33
FEB	60.3	62.9	49.9	50.4	524.2	472.1	497.2	8.83
MAR	60.6	63.8	56.2	55.2	509.2	439.8	472.9	8.42
ABR/ APR	64.4	67.9	62.7	62.5	559.0	506.5	515.9	8.03
MAY	66.2	70.0	65.3	67.3	649.0	573.1	589.1	9.51
JUN	71.4	74.6	76.0	70.6	704.7	678.6	698.9	10.34
JUL	75.7	79.7	76.1	71.6	657.5	725.1	746.7	12.71
AGO/ AUG	87.7	92.1	86.2	82.6	698.6	890.9	920.5	17.41
Ene-Ago/Jan-Aug/ 2009	68.8	72.3	65.5	64.3	606.1	599.9	622.0	10.6
Ene-Ago/Jan-Aug/ 2008	129.7	133.2	110.5	97.6	954.2	1,151.0	1,181.0	33.3
VARIACION % / % VARIATION								
Ene-Ago/Jan-Aug/ 2009-2008	-47.0	-45.7	-40.7	-34.1	-36.5	-47.9	-47.3	-68.2

(1) Mercado / MW US Market.

(2) Promedio / MW mean.

FUENTE/ SOURCE: Metals Week, Reuters.

**BOLSA DE METALES DE LONDRES**  
**PRECIOS DIARIOS OTROS METALES: AGOSTO 2009**  
(Centavos de dólar por libra. ¢US\$/lb)  
**OTHER METALS DAILY PRICES LME: AUGUST 2009**  
¢US\$/lb.

DIA/DAY	ESTAÑO/ TIN		PLOMO/ LEAD		ZINC		ALUMINIO/ ALUMINIUM		NIQUEL/ NICKEL	
	Contado/ Spot	Futuro/ Future	Contado/ Spot	Futuro/ Future	Contado/ Spot	Futuro/ Future	Contado/ Spot	Futuro/ Future	Contado/ Spot	Futuro/ Future
1										
2										
3	699.21	684.02	88.41	88.63	82.15	83.10	87.57	88.43	842.78	848.22
4	671.32	662.25	85.91	86.43	81.42	82.51	86.39	87.43	847.31	852.75
5	696.49	682.66	87.57	87.82	83.96	85.37	91.42	92.67	895.39	898.11
6	712.14	689.46	86.05	86.86	84.94	85.84	90.79	91.90	910.59	911.72
7	673.59	659.98	82.35	83.23	82.65	83.78	89.45	90.95	884.73	884.73
8										
9										
10	691.28	678.12	85.77	86.59	84.94	86.41	90.63	92.22	928.73	929.64
11	679.26	670.86	82.78	83.03	83.33	84.73	88.63	90.08	915.12	920.79
12	676.31	665.65	80.51	81.87	80.97	81.83	85.82	87.32	874.07	876.79
13	709.87	685.15	85.57	86.55	86.07	87.45	92.31	93.69	955.72	959.58
14	705.34	687.19	86.41	87.00	85.00	86.23	91.47	92.99	941.43	944.61
15										
16										
17	662.25	639.57	80.99	81.67	79.63	80.94	86.64	88.31	860.69	862.28
18	675.85	641.83	82.78	83.46	80.74	82.46	90.29	91.90	901.74	902.65
19	639.57	619.15	81.19	81.87	79.86	81.19	86.41	88.02	866.36	862.05
20	664.51	637.30	82.60	83.73	81.81	83.05	86.46	87.91	873.17	875.43
21	653.17	633.90	83.69	84.82	82.01	83.23	86.55	87.95	885.64	884.51
22										
23										
24	672.45	651.13	88.25	89.04	83.46	84.37	85.32	86.93	893.35	891.31
25	662.25	641.83	90.99	91.85	81.90	83.42	85.50	87.32	889.04	886.77
26	645.24	632.76	94.21	94.62	82.78	84.14	84.21	85.73	884.51	882.24
27	646.37	635.03	91.65	92.35	82.46	83.62	83.14	84.55	879.52	875.43
28	653.17	639.57	96.07	96.48	82.55	85.30	85.30	86.77	888.81	887.00
29										
30										
31	Feriado/Holiday		Feriado/Holiday		Feriado/Holiday		Feriado/Holiday		Feriado/Holiday	
<b>PROMEDIO MES</b>										
<b>MONTH AVG</b>	<b>674.481</b>	<b>656.870</b>	<b>86.187</b>	<b>86.896</b>	<b>82.630</b>	<b>83.949</b>	<b>87.714</b>	<b>89.153</b>	<b>890.935</b>	<b>891.831</b>

Fuente / Source: Reuters. Elaborado por la Comisión Chilena del Cobre

## PARIDADES MONEDAS EXTRANJERAS, PROMEDIOS BANCO CENTRAL DE CHILE

## PARITY CENTRAL BANK OF CHILE

PERIODO/ PERIOD	US\$ / L	EURO / US\$	YEN / US\$	Observado/ Observed \$/ US\$
2004	1.83110	0.80518	108.153	609.53
2005	1.81820	0.80432	110.059	559.77
2006	1.83969	0.79692	116.317	530.28
2007	2.00116	0.73088	117.756	522.47
2008	1.83549	0.68332	103.470	522.46
ENE/ JAN / 2006	1.76331	0.82656	115.573	524.48
FEB	1.74868	0.83689	117.992	525.70
MAR	1.74486	0.83201	117.246	528.77
ABR/ APR	1.76475	0.81551	117.094	517.33
MAY	1.86883	0.78298	111.728	520.79
JUN	1.84527	0.78910	114.472	542.46
JUL	1.84396	0.78777	115.667	540.62
AGO/ AUG	1.89155	0.78071	115.808	538.53
SEP	1.88784	0.78472	117.034	538.65
OCT	1.87513	0.79257	118.634	530.95
NOV	1.90953	0.77688	117.329	527.44
DIC/ DEC	1.96311	0.75741	117.228	527.58
ENE/ JAN / 2007	1.95822	0.76952	120.378	540.51
FEB	1.95844	0.76494	120.569	542.27
MAR	1.94707	0.75531	117.349	538.49
ABR/ APR	1.98673	0.74065	118.852	532.30
MAY	1.98403	0.73989	120.727	522.02
JUN	1.98551	0.74530	122.580	526.72
JUL	2.03388	0.72920	121.627	519.80
AGO/ AUG	2.01250	0.73360	116.879	522.92
SEP	2.02138	0.72067	115.009	516.91
OCT	2.04286	0.70340	115.787	501.44
NOV	2.07068	0.68121	110.973	506.95
DIC/ DEC	2.02054	0.68692	112.343	499.28
ENE/ JAN / 2008	1.96882	0.67966	107.962	480.90
FEB	1.96416	0.67854	107.202	467.22
MAR	2.00176	0.64536	101.006	442.94
ABR/ APR	1.98050	0.63444	102.483	446.43
MAY	1.96523	0.64285	104.335	470.10
JUN	1.96664	0.64275	106.801	493.61
JUL	1.98836	0.63454	106.918	502.24
AGO/ AUG	1.89385	0.66661	109.309	516.70
SEP	1.79885	0.69498	106.737	530.17
OCT	1.69727	0.74962	100.507	618.39
NOV	1.53375	0.78508	96.995	651.51
DIC/ DEC	1.49060	0.74547	91.378	649.32
ENE/ JAN / 2009	1.44425	0.75230	90.214	623.01
FEB	1.44092	0.78050	92.440	606.00
MAR	1.41804	0.76780	97.651	592.93
ABR/ APR	1.46994	0.75760	98.868	583.18
MAY	1.53799	0.73380	96.628	565.72
JUN	1.63506	0.71360	96.631	553.08
JUL	1.63631	0.71070	94.496	540.42
AGO/ AUG	1.65473	0.70113	94.930	546.88
Ene-Ago/Jan-Aug/ 2009	1.52965	0.73968	95.2321	576.40
Ene-Ago/Jan-Aug/ 2008	1.96617	0.65309	105.7521	477.52
VARIACION % / % VARIATION				
Ene-Ago/Jan-Aug/ 2009-2008	-22.2	13.3	-9.9	20.7

FUENTE/ SOURCE: Banco Central de Chile, Reuters.

**ANTECEDENTES DE PRODUCCION Y  
EXPORTACIONES /  
PRODUCTION AND EXPORTS INFORMATION**

**PRODUCCION CHILENA DE COBRE Y MOLIBDENO COMERCIALIZABLE**  
**CHILEAN COPPER AND MOLYBDENUM PRODUCTION**

	PRODUCCION DE COBRE / COPPER PRODUCTION(1) (Miles de T.M.de Cobre Fino) / (Thousand MT of fine copper)					MOLIBDENO / MOLYBDENUM(3) (T.M. de Fino) / (MT of fine molybdenum)		
	MINA MINE	FUNDICION SMELTER	REFINADO / REFINED COPPER			CONCENT. OXIDOS	OXIDOS	TOTAL
			SX-EW	OTROS(2) OTHER	TOTAL			
2004	5,412.5	1,517.6	1,636.3	1,200.4	2,836.7	33,544.2	8,339.0	41,883.2
2005	5,320.5	1,558.1	1,584.6	1,239.4	2,824.0	39,069.7	8,971.0	48,040.7
2006	5,360.8	1,565.4	1,691.8	1,119.5	2,811.3	36,080.6	7,197.0	43,277.6
2007	5,557.0	1,514.3	1,832.1	1,104.4	2,936.5	37,668.1	7,244.0	44,912.1
2008	5,327.6	1,369.2	1,971.0	1,086.6	3,057.6	28,024.5	5,662.0	33,686.5
ENE/ JAN / 2006	415.1	101.6	137.0	92.8	229.8	2,517.2	412.0	2,929.2
FEB	388.3	94.7	124.2	86.0	210.2	2,259.1	714.0	2,973.1
MAR	441.0	121.9	142.0	94.4	236.4	3,147.3	488.0	3,635.3
ABR/ APR	443.6	133.4	131.4	93.7	225.1	2,801.6	690.0	3,491.6
MAY	459.1	140.0	139.1	95.9	235.0	3,366.8	501.0	3,867.8
JUN	447.9	134.4	135.8	91.2	227.0	2,706.5	668.0	3,374.5
JUL	459.8	129.9	144.9	95.4	240.3	2,666.1	656.0	3,322.1
AGO/ AUG	411.7	136.2	135.9	93.8	229.7	3,274.4	299.0	3,573.4
SEP	392.5	134.6	136.8	90.8	227.6	3,306.7	418.0	3,724.7
OCT	490.5	146.2	153.0	95.7	248.7	3,536.6	643.0	4,179.6
NOV	479.0	135.7	148.3	90.2	238.5	3,277.4	802.0	4,079.4
DIC/ DEC	532.3	156.8	163.4	99.6	263.0	3,220.9	906.0	4,126.9
ENE/ JAN / 2007	445.2	113.0	162.6	93.9	256.5	2,855.1	261.0	3,116.1
FEB	388.8	90.8	148.1	82.2	230.3	2,025.1	702.0	2,727.1
MAR	498.1	148.8	153.5	107.0	260.5	3,127.0	790.0	3,917.0
ABR/ APR	454.9	132.5	158.4	98.3	256.7	3,464.5	644.0	4,108.5
MAY	476.1	134.7	159.6	100.4	260.0	3,008.3	612.0	3,620.3
JUN	457.9	129.5	146.5	93.9	240.4	3,247.1	547.0	3,794.1
JUL	451.8	93.5	146.8	72.5	219.3	3,196.1	780.0	3,976.1
AGO/ AUG	427.5	116.3	142.5	72.8	215.3	3,055.7	638.0	3,693.7
SEP	474.5	149.4	150.4	103.2	253.6	3,694.9	427.0	4,121.9
OCT	482.0	140.5	155.6	93.1	248.7	3,496.8	599.0	4,095.8
NOV	469.0	125.1	145.9	90.1	236.0	2,868.4	481.0	3,349.4
DIC/ DEC	531.2	140.2	162.2	97.0	259.2	3,629.1	763.0	4,392.1
ENE/ JAN / 2008	437.0	101.7	160.7	81.2	241.9	3,443.7	87.0	3,530.7
FEB	419.4	117.9	148.2	88.7	236.9	2,096.5	744.0	2,840.5
MAR	453.2	118.5	157.1	89.0	246.1	2,492.2	908.0	3,400.2
ABR/ APR	430.0	97.4	157.5	77.5	235.0	1,671.7	730.0	2,401.7
MAY	465.9	113.6	168.0	91.9	259.9	1,730.7	30.0	1,760.7
JUN	472.0	114.9	162.5	93.8	256.3	1,987.5	769.0	2,756.5
JUL	431.6	115.7	158.4	99.1	257.5	2,352.2	618.0	2,970.2
AGO/ AUG	424.2	110.3	165.1	95.5	260.6	2,112.5	383.0	2,495.5
SEP	419.9	108.7	157.1	89.1	246.2	2,165.1	304.0	2,469.1
OCT	455.7	121.6	173.5	101.5	275.0	2,575.3	299.0	2,874.3
NOV	436.2	112.0	174.8	84.0	258.8	2,380.9	167.0	2,547.9
DIC/ DEC	482.5	136.9	188.1	95.3	283.4	3,016.2	623.0	3,639.2
ENE/ JAN / 2009 (P)	430.1	110.6	182.1	91.7	273.8	2,218.7	654.0	2,872.7
FEB	376.5	98.5	163.5	88.6	252.1	1,838.5	693.0	2,531.5
MAR	425.5	103.4	178.9	97.5	276.4	2,628.5	617.0	3,245.5
ABR/ APR	424.9	111.5	174.2	99.5	273.7	1,894.5	702.0	2,596.5
MAY	453.4	131.9	175.8	97.1	272.9	1,942.1	754.0	2,696.1
JUN	465.9	128.2	176.5	96.4	272.9	2,477.6	479.0	2,956.6
JUL	421.3	126.1	176.2	100.2	276.4	2,222.1	367.0	2,589.1
ENE-JUL/ JAN-JUL / 2009 (P)	2,997.6	810.2	1,227.2	671.0	1,898.2	15,222.0	4,266.0	19,488.0
ENE-JUL/ JAN-JUL / 2008 (P)	3,109.1	779.7	1,112.4	621.2	1,733.6	15,774.5	3,886.0	19,660.5
VARIACION % / % VARIATION								
ENE-JUL/ JAN-JUL / 2009-2008	-3.6	3.9	10.3	8.0	9.5	-3.5	9.8	-0.9

(P) Cifras provisionarias./ Provisional figures

(1) A contar del Boletín Agosto 2002, la Producción de Cobre se presenta como: Mina, Fundición y Refinería, de acuerdo a la clasificación usada internacionalmente/ Since 2002 August Bulletin, Copper Production is shown as: Mine, Smelter and refinery, according to the international classification.

(2) Incluye cobre electrorefinado y cobre refinado a fuego/Includes electro-refined and fire refined copper.

(3) Corresponde a la producción en las plantas de Codelco-Chile, de Disputada de las Condes (A contar de Agosto de 1994) y de Pelambres (A contar de Enero de 2000). / Corresponds to the production of: Codelco-Chile, Disputada de Las Condes (since August 1994), and Pelambres (since January 2000).

FUENTE/ SOURCE: COMISION CHILENA DEL COBRE.

**PRODUCCION CHILENA DE COBRE DE MINA COMERCIAL POR EMPRESA  
CHILEAN COPPER MINE PRODUCTION BY COMPANY**

(Miles de T.M. de cobre fino) / (Thousand metric tons of fine copper)

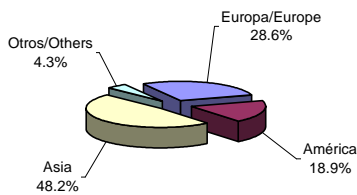
	CODELCO					TOTAL	Anglo American					Anglo American		Cerro		El	Quebrada		Lomas		TOTAL CHILE		
	División Codelco Norte	División Salvador	División Andina	División El Teniente	Gaby		Los Escondida	Pelambres	Sur	El Abra	Candelaria	Norte	Zaldívar	Colorado	Tesoro	Bianca	Bayas	Michilla	Spence	Otros			
2004	982.8	74.9	239.9	435.6	-	1,733.2	1,195.1	481.0	362.6	300.6	218.0	200.0	155.0	147.6	119.5	97.8	76.3	62.0	50.0	-	213.8	5,412.5	
2005	964.9	77.5	248.2	437.4	-	1,728.0	1,271.5	427.0	333.8	293.7	210.6	162.7	149.7	123.3	90.4	98.1	81.0	63.2	46.4	-	241.1	5,320.5	
2006	940.6	80.6	236.4	418.3	-	1,675.9	1,255.6	440.0	335.2	294.8	218.6	169.6	152.1	146.3	115.5	94.0	82.4	64.3	47.3	4.3	264.9	5,360.8	
2007	896.3	63.9	218.4	404.7	-	1,583.3	1,483.9	452.0	300.1	302.1	166.0	181.0	151.6	142.9	98.7	93.0	82.9	61.5	45.1	128.1	284.8	5,557.0	
2008	755.3	42.7	219.5	381.2	67.7	1,466.4	1,254.0	464.4	351.2	283.5	165.8	173.5	148.9	133.5	104.2	90.8	85.4	59.2	47.7	164.8	334.3	5,327.6	
ENE/ JAN / 2007	74.2	6.1	19.1	23.1	-	122.5	123.8	24.1	27.4	24.4	15.0	12.7	13.2	12.6	10.4	8.3	7.0	5.6	3.8	10.2	24.2	445.2	
FEB	48.0	5.8	18.1	28.8	-	100.7	112.4	19.8	22.6	22.7	13.6	12.2	12.3	11.2	8.5	7.5	6.4	5.1	3.9	9.6	20.3	388.8	
MAR	69.8	6.2	20.2	41.7	-	137.9	150.4	33.0	23.1	26.3	14.3	14.2	12.9	12.6	9.2	7.8	7.3	5.8	3.9	13.8	25.6	498.1	
ABR/ APR	75.9	6.6	19.2	37.7	-	139.4	117.1	35.8	23.2	22.6	13.1	12.8	12.4	12.3	7.1	8.0	7.0	5.5	3.8	12.0	22.8	454.9	
MAY	73.4	6.8	18.0	37.6	-	135.8	130.3	38.1	27.1	26.3	13.7	13.2	12.8	11.6	6.8	7.4	7.1	5.4	4.2	13.2	23.1	476.1	
JUN	75.3	2.0	17.8	32.5	-	127.6	124.7	39.2	23.2	24.9	13.0	16.4	11.7	11.2	6.4	7.8	6.7	5.2	3.8	12.4	23.7	457.9	
JUL	72.0	1.1	15.1	27.0	-	115.2	129.7	41.5	25.6	24.8	11.2	14.3	12.4	12.4	8.2	7.8	6.5	5.1	3.8	9.4	23.9	451.8	
AGO/ AUG	68.4	3.2	16.8	25.1	-	113.5	108.2	44.8	19.7	24.8	13.9	16.4	12.4	12.5	7.3	7.3	6.7	4.8	4.1	7.2	23.9	427.5	
SEP	84.2	7.3	19.0	38.1	-	148.6	115.8	43.5	23.6	26.4	14.9	16.1	12.8	11.7	7.6	7.5	6.9	4.8	3.6	7.3	23.4	474.5	
OCT	75.0	7.3	17.7	38.8	-	138.8	120.9	43.0	26.1	26.4	13.8	19.0	14.0	12.1	9.0	7.7	7.2	5.2	3.6	8.1	27.1	482.0	
NOV	86.1	5.1	18.6	33.5	-	143.3	108.3	42.0	26.8	26.2	13.9	18.5	12.6	11.3	9.1	7.9	6.9	4.5	2.4	11.2	24.1	469.0	
DIC/ DEC	94.0	6.4	18.8	40.8	-	160.0	142.3	47.2	31.7	26.3	15.6	15.2	12.1	11.4	9.1	8.0	7.2	4.5	4.2	13.7	22.7	531.2	
ENE/ JAN / 2008	55.8	4.1	20.1	31.3	-	111.3	116.1	41.5	23.6	23.6	13.3	11.1	12.6	11.4	9.6	8.4	7.2	4.9	4.0	14.7	23.7	437.0	
FEB	62.8	5.7	17.5	32.1	-	118.1	101.0	32.5	28.3	24.3	12.9	12.7	11.9	10.2	9.1	7.2	6.5	4.4	3.6	12.5	24.2	419.4	
MAR	65.5	4.2	18.2	30.0	-	117.9	116.6	36.1	30.1	24.8	13.2	14.5	12.7	11.5	10.0	8.4	7.1	4.8	3.9	14.4	27.2	453.2	
ABR/ APR	66.0	2.7	10.2	19.6	-	98.5	113.6	42.6	26.4	25.7	13.7	11.1	12.5	11.0	8.5	7.7	7.1	4.6	3.8	14.8	28.4	430.0	
MAY	70.6	3.0	19.1	24.5	-	117.2	131.5	35.8	29.1	22.9	14.0	12.3	12.8	10.2	10.1	7.7	7.4	5.0	3.9	15.0	31.0	465.9	
JUN	60.0	5.2	17.5	29.4	4.3	116.4	145.4	35.3	32.2	24.1	14.5	14.0	11.5	9.8	8.7	7.3	7.1	4.6	3.9	13.2	24.0	472.0	
JUL	56.0	5.0	19.2	36.4	8.2	124.8	91.2	37.0	31.1	22.2	13.7	17.9	11.9	8.4	7.3	7.8	7.0	4.9	4.2	12.0	30.2	431.6	
AGO/ AUG	56.2	3.5	17.3	33.2	10.5	120.7	88.0	36.1	29.9	21.3	13.8	19.0	12.9	10.2	7.1	7.3	7.3	4.8	4.1	12.1	29.6	424.2	
SEP	58.7	2.7	20.2	34.4	5.9	121.9	92.6	33.7	32.1	20.0	14.4	13.7	12.3	10.5	7.5	6.4	7.0	4.8	4.0	11.6	27.4	419.9	
OCT	63.9	3.5	19.5	35.5	13.7	136.1	84.5	42.3	32.3	26.2	13.8	16.6	12.8	13.0	8.5	6.5	7.3	5.1	4.2	13.9	32.6	455.7	
NOV	61.1	0.5	20.3	33.6	12.6	128.1	83.3	44.7	26.2	23.5	13.6	16.3	12.5	13.2	8.5	7.7	7.1	4.8	4.0	15.0	27.7	436.2	
DIC/ DEC	78.7	2.6	20.4	41.2	12.5	155.4	90.2	46.8	29.9	24.9	14.9	14.3	12.5	14.1	9.3	8.4	7.3	6.5	4.1	15.6	28.3	482.5	
ENE/ JAN / 2009 (P)	55.8	4.8	17.3	31.1	13.6	122.6	84.7	44.3	29.2	20.1	13.4	12.9	12.7	12.0	9.2	7.6	7.3	5.8	4.2	16.4	27.7	430.1	
FEB	52.4	4.8	17.9	30.1	11.3	116.5	72.6	33.4	24.3	18.6	12.2	11.0	11.5	11.1	8.2	5.6	6.8	5.9	3.7	15.2	19.9	376.5	
MAR	67.4	4.9	19.9	26.3	13.7	132.2	77.0	41.6	29.5	22.1	13.0	12.5	12.6	11.2	9.1	7.2	7.4	6.0	3.5	16.0	24.6	425.5	
ABR/ APR	65.0	5.4	16.9	33.3	11.2	131.8	78.1	41.5	26.7	23.8	13.5	11.5	12.9	12.0	9.3	6.5	7.2	6.0	3.3	15.1	25.7	424.9	
MAY	71.6	4.7	18.7	32.6	8.2	135.8	98.7	45.3	27.4	23.1	14.0	11.3	12.9	11.3	9.4	6.6	7.4	6.2	3.1	15.2	25.7	453.4	
JUN	78.3	5.4	15.8	33.0	11.7	144.2	109.8	41.8	26.0	22.7	13.7	12.9	12.5	10.6	8.8	6.5	7.3	6.2	2.9	14.4	25.6	465.9	
JUL	68.5	4.8	19.6	33.3	13.2	139.4	69.5	40.2	29.0	23.6	13.4	11.5	12.6	11.8	6.0	8.5	7.2	6.1	3.1	16.5	22.9	421.3	
ENE-JUL/ JAN-JUL / 2009 (P)	459.0	34.8	126.1	219.7	82.9	922.5	590.4	288.1	192.1	154.0	93.2	83.6	87.7	80.0	60.0	48.5	50.6	42.2	23.8	108.8	172.1	2,997.6	
ENE-JUL/ JAN-JUL / 2008	436.7	29.9	121.8	203.3	12.5	804.2	815.4	260.8	200.8	167.6	95.3	93.6	85.9	72.5	63.3	54.5	49.4	33.2	27.3	96.6	188.7	3,109.1	
VARIACION % / % VARIATION																							
ENE-JUL/ JAN-JUL / 2009-2008	5.1	16.4	3.5	8.1	-	14.7	-27.6	10.5	-4.3	-8.1	-2.2	-10.7	2.1	10.3	-5.2	-11.0	2.4	27.1	-12.8	12.6	-8.8	-3.6	

(P) Cifras provisionarias./ Provisional figures

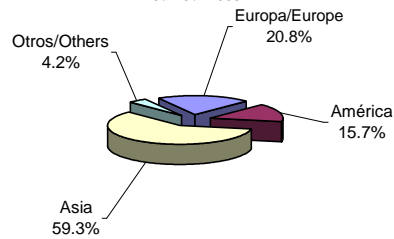
FUENTE/ SOURCE: COMISION CHILENA DEL COBRE.

## Evolución Exportaciones por Destinos y Productos Exports Evolution by Destination and Type of Product

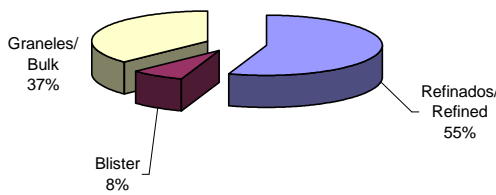
**Participación Relativa Embarques de Cobre y Subproductos año 2008**  
 Copper and by-products shipments relative share year 2008



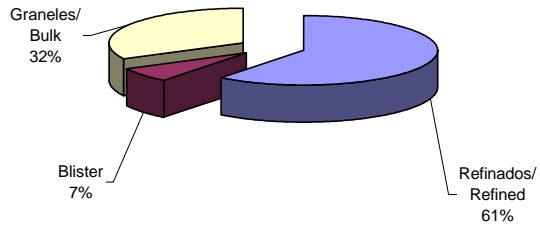
**Participación Relativa Embarques de Cobre y Subproductos Ene-Jul 2009**  
 Copper and by-products shipments relative share Jan-Jul 2009



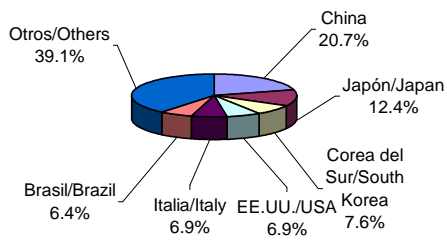
**Participación de Productos en las Exportaciones de Cobre año 2008**  
 Share of Products in Copper Exports year 2008



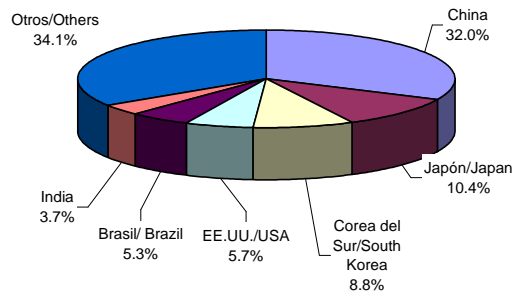
**Participación de Productos en las Exportaciones de Cobre Ene-Jul 2009**  
 Share of Products in Copper Exports Jan-Jul 2009



**Países de destino de las Exportaciones de Cobre año 2008**  
 Copper Exports by destination country year 2008



**Países de destino de las Exportaciones de Cobre Ene-Jul 2009**  
 Copper Exports by destination country Jan-Jul 2009



**VALORES DE LOS EMBARQUES DE EXPORTACION  
DE COBRE Y SUBPRODUCTOS**  
(FOB líquido de retorno en millones de dólares)  
**COPPER AND BY-PRODUCTS EXPORT SHIPMENTS VALUE (USD millions FOB)**

	COBRE(1)	CONCENTRADOS MOLIBDENITA	OTROS SUBPRODUCTOS (2)	TOTAL
	COPPER(1)	MOLYBDENITE CONCENTRATES	OTHER BY-PRODUCTS (2)	
2004	14,530.0	457.1	1,102.8	16,089.9
2005	17,762.6	1,101.1	2,184.4	21,048.1
2006	33,350.6	875.0	1,927.2	36,152.8
2007	37,913.2	1,390.0	2,267.8	41,571.0
2008	36,550.2	490.7	2,686.2	39,727.1
ENE/ JAN / 2006	1,899.3	71.8	179.1	2,150.2
FEB	1,933.7	31.6	110.0	2,075.3
MAR	3,342.3	128.9	204.3	3,675.5
ABR/ APR	2,277.3	70.7	132.4	2,480.4
MAY	3,241.0	45.3	183.4	3,469.7
JUN	2,906.2	70.7	129.0	3,105.9
JUL	3,353.7	72.4	159.5	3,585.6
AGO/ AUG	2,912.6	109.0	183.5	3,205.1
SEP	3,196.1	48.4	167.8	3,412.3
OCT	2,959.6	105.6	150.0	3,215.2
NOV	2,876.8	35.6	180.9	3,093.3
DIC/ DEC	2,452.0	85.0	147.3	2,684.3
ENE/ JAN / 2007	3,352.9	117.5	151.2	3,621.6
FEB	2,454.1	134.2	124.7	2,713.0
MAR	2,855.5	298.8	150.3	3,304.5
ABR/ APR	3,188.3	102.8	169.5	3,460.6
MAY	4,122.9	117.1	178.3	4,418.3
JUN	2,940.2	114.9	210.9	3,266.0
JUL	3,522.4	100.9	208.5	3,831.8
AGO/ AUG	2,677.8	107.8	197.9	2,983.5
SEP	3,095.7	62.3	192.5	3,350.5
OCT	3,955.5	56.4	205.8	4,217.7
NOV	3,173.7	102.1	251.3	3,527.1
DIC/ DEC	2,574.3	75.1	227.1	2,876.5
ENE/ JAN / 2008	3,465.2	60.8	222.0	3,748.0
FEB	2,952.5	50.6	212.2	3,215.2
MAR	4,092.1	69.5	263.1	4,424.8
ABR/ APR	3,625.1	46.4	234.9	3,906.5
MAY	2,846.8	38.8	184.0	3,069.6
JUN	3,444.5	41.4	295.2	3,781.1
JUL	3,953.0	65.0	255.8	4,273.8
AGO/ AUG	3,338.3	30.4	262.8	3,631.6
SEP	2,383.6	26.0	232.4	2,642.0
OCT	3,006.2	25.4	222.9	3,254.5
NOV	2,126.5	24.4	142.3	2,293.2
DIC/ DEC	1,316.2	11.9	158.6	1,486.7
ENE/ JAN / 2009	1,509.4	4.6	137.9	1,651.9
FEB	1,285.2	5.8	115.3	1,406.3
MAR	1,436.7	6.2	132.2	1,575.0
ABR/ APR	1,754.5	6.5	76.8	1,837.7
MAY	1,878.6	8.0	89.6	1,976.2
JUN	1,920.2	12.7	110.1	2,043.0
JUL	2,354.9	16.7	116.7	2,488.2
ENE-JUL/ JAN-JUL / 2009	12,139.4	60.4	778.6	12,978.4
ENE-JUL/ JAN-JUL / 2008	24,379.3	372.5	1,667.2	26,419.0
VARIACION % / % VARIATION				
ENE-JUL/ JAN-JUL 2009/2008	-50.2	-83.8	-53.3	-50.9

Nota: Las cifras corresponden a la fecha de emisión del Documento Unico de Salida (DUS).

Los valores del DUS son provisionarios ( para las exportaciones bajo condición), mientras no se reemplacen por los valores definitivos de los Informes de Variación de Valor (IVV).

Note: Figures correspond to the date indicated in the the Export Clearance (DUS).

Values of Export Clearance (DUS) are provisional (for exports under condition), until they are replaced by the definitive values in the Value Variations Reports (VVR).

- (1) No incluye el valor del cobre contenido en los embarques de concentrados de minerales de oro (Cía. Minera El Indio), por estar incorporado en la glosa de exportaciones de oro que informa el Banco Central de Chile./ Does not include value of copper content in gold concentrates shipments (Cia. Minera El Indio), as they are included in the gold exports gloss informed by the Central Bank of Chile.
- (2) Incluye: Barros Anódicos, Metal Doré, Plata, Selenio, Oxido de Molibdeno y otros./ Includes: Anod slimes, dore, silver, selenium, molybdenum oxide and others.
- (a) Valor inferior a 50 mil dólares. / Value below 50 thousand dollars.

FUENTE / SOURCE: COMISION CHILENA DEL COBRE.

**EMBARQUES FISICOS DE EXPORTACION DE COBRE Y  
CONCENTRADOS DE MOLIBDENITA  
COPPER AND MOLIBDENYTE CONCENTRATES EXPORT QUANTITY SHIPMENTS**

	COBRE (Miles de T.M. de Cobre Fino)/ COPPER (thousand MT of fine copper)				C.MOLIBDENITA	
	REFINADOS(1)	BLISTER	GRANELES(2)	TOTAL	(T.M. de Fino)	
	REFINED	BLISTER	BULK	TOTAL	MOLYBDENYTE C. (MT of fine)	
2004	2,953.9	366.1	2,165.6	5,485.6		15,276.2
2005	2,799.3	347.3	2,190.4	5,337.0		18,129.9
2006	2,605.8	457.1	2,171.1	5,234.0		19,793.1
2007	2,909.7	505.5	2,258.1	5,673.4		22,961.7
2008	2,983.1	407.7	2,014.4	5,405.3		7,969.3
ENE/ JAN / 2006	189.2	29.4	170.9	389.5		1,301.8
FEB	233.7	35.1	120.2	389.0		873.2
MAR	300.5	34.4	259.8	594.7		4,242.6
ABR/ APR	178.6	31.4	161.4	371.4		1,455.6
MAY	260.0	40.5	185.1	485.6		962.6
JUN	220.5	31.4	162.2	414.1		1,422.3
JUL	217.1	44.0	231.2	492.3		1,376.7
AGO/ AUG	204.8	61.3	144.0	410.1		2,582.6
SEP	234.2	39.1	177.8	451.1		1,171.4
OCT	197.5	40.5	194.0	432.0		1,970.1
NOV	188.2	37.9	200.5	426.6		698.7
DIC/ DEC	181.5	32.1	164.0	377.6		1,735.5
ENE/ JAN / 2007	317.3	69.9	173.5	560.7		2,322.0
FEB	210.6	40.2	164.4	415.2		2,195.4
MAR	229.0	37.2	199.7	465.9		4,582.7
ABR/ APR	265.7	39.6	170.8	476.1		1,722.0
MAY	362.5	40.5	194.4	597.4		1,972.4
JUN	196.1	35.2	187.6	418.9		1,907.7
JUL	255.8	23.0	216.3	495.1		1,484.1
AGO/ AUG	204.4	38.6	140.1	383.1		1,779.4
SEP	200.2	25.5	232.7	458.5		1,026.4
OCT	267.0	65.8	234.2	567.1		924.4
NOV	226.2	38.0	180.8	445.0		1,822.6
DIC/ DEC	175.0	51.8	163.4	390.2		1,222.7
ENE/ JAN / 2008	246.0	62.0	205.4	513.4		881.8
FEB	261.0	32.4	113.5	406.9		784.6
MAR	255.6	37.9	255.8	549.3		1,121.4
ABR/ APR	236.4	29.4	198.7	464.4		706.6
MAY	213.9	35.0	106.6	355.5		569.9
JUN	232.0	35.5	182.7	450.2		655.7
JUL	268.7	12.7	243.4	524.8		943.3
AGO/ AUG	259.9	42.0	146.3	448.1		454.2
SEP	198.9	14.7	133.8	347.4		442.3
OCT	300.0	35.2	160.9	496.1		394.1
NOV	254.1	43.0	178.6	475.7		434.0
DIC/ DEC	256.8	28.0	88.7	373.4		581.4
ENE/ JAN / 2009	269.0	44.3	175.4	488.7		260.9
FEB	269.2	25.3	114.1	408.6		363.9
MAR	268.0	33.4	126.0	427.4		402.0
ABR/ APR	269.7	30.8	178.1	478.6		388.5
MAY	279.3	23.0	144.7	447.0		495.6
JUN	242.4	33.8	161.3	437.4		858.5
JUL	329.8	32.4	133.0	495.2		846.4
ENE-JUL/ JAN-JUL / 2009	1,927.5	222.9	1,032.5	3,183.0		3,615.8
ENE-JUL/ JAN-JUL / 2008	1,713.6	244.8	1,306.1	3,264.5		5,663.4
VARIACION % / % VARIATION						
ENE-JUL/ JAN-JUL 2009/2008	12.5	-8.9	-20.9	-2.5		-36.2

Nota: Las cifras corresponden a la fecha de emisión del Documento Unico de Salida (DUS).

Los valores del DUS son provisionarios ( para las exportaciones bajo condición), mientras no se reemplacen por los valores definitivos de los Informes de Variación de Valor(IVV).

Note: Figures correspond to the date indicated in the the Export Clearance (DUS).

Values of Export Clearance (DUS) are provisional (for exports under condition), until they are replaced by the definitive values in the Value Variation Reports (VVR).

(1) Incluye cátodos, formas especiales y refinado a fuego./ Includes cathodes, special forms and fire refined.

(2) Incluye cementos, concentrados y cobre secundario./ Includes cements, concentrates and secondary copper.

FUENTE / SOURCE: COMISION CHILENA DEL COBRE.

**EMBARQUES FISICOS DE EXPORTACION DE COBRE  
POR EXPORTADOR**  
(Miles de T.M. de Cobre Fino)  
**COPPER EXPORT SHIPMENTS QUANTITY BY EXPORTER (Thousand MT of fine copper)**

	2007	2008	ENERO-JULIO JANUARY-JULY		VARIACION % ENE-JUL 2009/2008
			2008	2009	% VARIATION JAN-JUL 2009/2008
<b>CODELCO-CHILE</b>	<b>1,835.3</b>	<b>1,717.6</b>	<b>985.1</b>	<b>1,093.7</b>	<b>11.0</b>
<b>OTRAS EMPRESAS MINERAS OTHER MINING COMPANIES</b>	<b>3,832.0</b>	<b>3,679.9</b>	<b>2,274.6</b>	<b>2,086.6</b>	<b>-8.3</b>
ENAMI	137.7	130.4	82.9	125.8	51.7
ANGLO AMERICAN NORTE	113.3	131.3	72.7	83.0	14.2
ANGLO AMERICAN SUR	260.4	191.8	124.9	127.6	2.2
XSTRATA COPPER CHILE S.A.	173.3	180.0	117.2	94.0	-19.8
ESCONDIDA	1,353.0	1,152.4	794.6	571.6	-28.1
QUEBRADA BLANCA	80.7	84.3	48.7	51.0	4.7
PUNTA DEL COBRE	8.0	8.9	4.5	2.0	-55.6
CERRO COLORADO	95.2	106.0	64.8	66.9	3.2
MINERA MICHILLA S.A.	44.8	47.4	27.7	23.7	-14.4
CANDELARIA	179.3	169.6	94.2	60.3	-36.0
RAYROCK LTDA.	9.2	6.3	3.6	2.6	-27.8
EL ABRA	170.2	162.4	87.0	94.0	8.0
ANDACOLLO	19.2	21.3	12.1	12.3	1.7
CIA.EXPLORADORA DE MINAS	10.7	11.4	6.5	7.0	7.7
ZALDIVAR	148.9	114.7	73.0	86.0	17.8
COLLAHUASI	360.0	354.2	205.1	202.9	-1.1
CERRO DOMINADOR	16.5	17.7	9.4	4.6	-51.1
LOMAS BAYAS	66.4	59.3	33.2	40.0	20.5
EL TESORO	93.8	94.0	56.1	48.3	-13.9
LOS PELAMBRES	305.5	378.2	207.8	224.8	8.2
ATACAMA KOZAN	13.6	8.1	5.1	1.9	-62.7
HALDEMAN	14.9	16.3	9.1	7.1	-22.0
OJOS DEL SALADO	10.0	9.0	4.3	12.4	188.4
GRACE S.A.	15.9	18.3	11.5	7.0	-39.1
SPENCE	114.3	173.0	100.3	110.1	9.8
OTROS	17.2	33.6	18.3	19.7	7.7
<b>TRANSFORMADORES TRANSFORMERS</b>	<b>1.1</b>	<b>1.4</b>	<b>1.2</b>	<b>0.0</b>	<b>-100.0</b>
MADECO	1.1	1.4	1.2	0.0	-100.0
<b>EXPORTADORES DE CHATARRA SCRAP EXPORTERS</b>	<b>5.0</b>	<b>6.4</b>	<b>3.6</b>	<b>2.7</b>	<b>-25.0</b>
DIONISIO S.A.	1.0	0.0	0.0	0.2	-
INESA	-	0.0	0.0	-	-
MADECO	-	0.0	0.0	-	-
M.CERRILLOS	-	-	-	-	-
OTROS	4.0	6.4	3.6	2.5	-30.6
<b>TOTAL</b>	<b>5,673.4</b>	<b>5,405.3</b>	<b>3,264.5</b>	<b>3,183.0</b>	<b>-2.5</b>

Nota: Las cifras corresponden a la fecha de emisión del Documento Unico de Salida (DUS).

Los valores del DUS son provisionarios ( para las exportaciones bajo condición), mientras no se reemplacen por los valores definitivos de los Informes de Variación de Valor (IVV).

Note: Figures correspond to the date indicated in the the Export Clearance (DUS).

Values of Export Clearance (DUS) are provisional (for exports under condition), until they are replaced by the definitive values in the Value Variation Reports (VV).

FUENTE: COMISION CHILENA DEL COBRE.

**VALORES DE LOS EMBARQUES DE EXPORTACION DE COBRE Y SUBPRODUCTOS  
SEGUN PAIS DE DESTINO AÑO 2008**

(FOB líquido de retorno en millones de dólares)

**COPPER AND BY-PRODUCTS EXPORT SHIPMENTS VALUE BY DESTINATION COUNTRY YEAR 2008 (USD millions FOB)**

PAIS DE DESTINO DESTINATION COUNTRY	COBRE(1) COPPER	PARTICIPACION(%) SHARE (%)	SUBPRODUCTOS(2) BY-PRODUCTS	PARTICIPACION(%) SHARE (%)	TOTAL TOTAL	PARTICIPACION(%) SHARE (%)
<b>EUROPA/ EUROPE</b>	<b>9,975.0</b>	<b>27.3</b>	<b>1,379.9</b>	<b>43.4</b>	<b>11,354.8</b>	<b>28.6</b>
Alemania/ Germany	1,126.1	3.1	16.0	0.5	1,142.1	2.9
Austria	0.0	-	1.0	0.0	1.0	0.0
Bélgica/ Belgium	236.5	0.6	52.6	1.7	289.1	0.7
Bulgaria	419.0	1.1	-	-	419.0	1.1
España/ Spain	956.9	2.6	66.5	2.1	1,023.3	2.6
Finlandia/ Finland	114.2	0.3	4.4	0.1	118.6	0.3
Francia/ France	1,679.9	4.6	9.7	0.3	1,689.6	4.3
Holanda/ Netherlands	2,129.5	5.8	956.4	30.1	3,085.9	7.8
Italia/ Italy	2,564.4	7.0	65.8	2.1	2,630.2	6.6
Polonia/ Poland	186.9	0.5	-	-	186.9	0.5
Reino Unido/ United Kingdom	74.7	0.2	77.2	2.4	151.9	0.4
Suecia/ Sweden	254.6	0.7	111.0	3.5	365.6	0.9
Suiza/ Switzerland	232.3	0.6	16.6	0.5	248.9	0.6
Otros/ Other	0.0	0.0	2.7	0.1	2.7	0.0
<b>AMERICA / AMERICAS</b>	<b>6,756.7</b>	<b>18.5</b>	<b>733.9</b>	<b>23.1</b>	<b>7,490.5</b>	<b>18.9</b>
Argentina	114.9	0.3	18.4	0.6	133.3	0.3
Bolivia	-	-	2.6	0.1	2.6	0.0
Brasil/ Brazil	2,437.3	6.7	239.8	7.5	2,677.1	6.7
Canadá / Canada	716.8	2.0	13.5	0.4	730.3	1.8
Colombia	18.3	0.1	-	-	18.3	0.0
Estados Unidos/ USA	2,566.2	7.0	365.6	11.5	2,931.8	7.4
México / Mexico	710.6	1.9	93.2	2.9	803.8	2.0
Panamá	123.7	0.3	-	0.0	123.7	0.3
Perú / Peru	29.3	0.1	0.7	0.0	30.0	0.1
Venezuela	39.4	0.1	-	-	39.4	0.1
Otros/ Other	0.2	0.0	0.0	0.0	0.2	0.0
<b>ASIA</b>	<b>18,142.2</b>	<b>49.6</b>	<b>1,024.8</b>	<b>32.3</b>	<b>19,167.1</b>	<b>48.2</b>
Corea del Sur / South Korea	2,800.5	7.7	180.1	5.7	2,980.6	7.5
China	7,222.8	19.8	16.0	0.5	7,238.8	18.2
Filipinas/ Philippines	297.1	0.8	-	-	297.1	0.7
Hong Kong	9.4	0.0	-	-	9.4	0.0
India	1,623.9	4.4	17.2	0.5	1,641.1	4.1
Indonesia	1.1	-	-	-	1.1	0.0
Irán / Iran	28.7	0.1	-	-	28.7	0.1
Japón/ Japan	4,281.9	11.7	799.6	25.2	5,081.5	12.8
Malasia/ Malaysia	40.7	0.1	-	-	40.7	0.1
Singapur/ Singapore	89.8	0.2	0.9	0.0	90.6	0.2
Tailandia/ Thailand	36.0	0.1	6.6	0.2	42.6	0.1
Taiwan/ Taipei, China	1,440.0	3.9	-	-	1,440.0	3.6
Turquía/ Turkey	222.2	0.6	2.7	0.1	224.9	0.6
Vietnam	47.9	0.1	-	-	47.9	0.1
Otros/ Other	0.0	0.0	1.8	0.1	1.8	0.0
<b>OTROS/ OTHER</b>	<b>1,676.3</b>	<b>4.6</b>	<b>38.4</b>	<b>1.2</b>	<b>1,714.6</b>	<b>4.3</b>
Australia	303.8	0.8	0.9	0.0	304.7	0.8
Sudáfrica / Southafrica	-	-	37.5	1.2	37.5	0.1
Otros/ Other	1,372.4	3.8	-	-	1,372.4	3.5
<b>TOTAL</b>	<b>36,550.2</b>	<b>100.0</b>	<b>3,176.9</b>	<b>100.0</b>	<b>39,727.1</b>	<b>100.0</b>

(1) Embarques de exportación a consumidores finales y a plantas de tratamiento. / Export shipments to final consumers and treatment plants.

(2) Incluye: Barros Anódicos, Metal Doré, Plata, Selenio, Oxido de Molibdeno, Concentrados de Molibdeno y otros./

Includes: Anod slimes, dore, silver, selenium, molybdenum oxide, molybdenum concentrates and others.

FUENTE/ SOURCE: COMISION CHILENA DEL COBRE.

**DESTINO DE LOS EMBARQUES FISICOS DE EXPORTACION DE COBRE (1)**  
**AÑO 2008**

(Miles de T.M. de Cobre Fino)

COPPER EXPORT SHIPMENTS QUANTITY BY DESTINATION COUNTRY YEAR 2008 (Thousand MT of fine copper)

PAIS DE DESTINO DESTINATION COUNTRY	REFINADOS(2) REFINED	BLISTER BLISTER	GRANELES(3) BULK	TOTAL TOTAL	PARTICIPACION PORCENTUAL SHARE (%)
<b>EUROPA/ EUROPE</b>	<b>1,063.3</b>	<b>66.6</b>	<b>330.2</b>	<b>1,460.1</b>	<b>27.0</b>
Alemania/ Germany	56.6	5.0	107.0	168.6	3.1
Belgica/ Belgium	0.3	31.7	0.0	32.0	0.6
Bulgaria	-	-	66.5	66.5	1.2
España/ Spain	85.2	-	60.6	145.9	2.7
Finlandia/ Finland	-	-	20.6	20.6	0.4
Francia/ France	239.0	-	-	239.0	4.4
Holanda/ Netherlands	272.8	29.9	-	302.6	5.6
Italia/ Italy	372.1	-	-	372.1	6.9
Polonia/ Poland	-	-	29.0	29.0	0.5
Reino Unido/ United Kingdom	8.6	0.0	0.2	8.8	0.2
Suecia/ Sweden	-	-	46.2	46.2	0.9
Suiza/ Switzerland	28.5	-	-	28.5	0.5
Otros/ Other	0.0	0.0	0.0	0.0	0.0
<b>AMERICA / AMERICAS</b>	<b>592.3</b>	<b>202.8</b>	<b>159.6</b>	<b>954.8</b>	<b>17.7</b>
Argentina	14.8	-	-	14.8	0.3
Brasil/ Brazil	202.6	0.3	143.3	346.3	6.4
Canada	-	84.6	11.5	96.1	1.8
Colombia	2.2	-	0.1	2.3	0.0
Estados Unidos/ United States	329.4	43.0	0.0	372.4	6.9
Mexico	23.6	74.8	-	98.3	1.8
Panamá	15.0	-	0.3	15.3	0.3
Peru	-	0.0	4.2	4.2	0.1
Venezuela	4.7	-	-	4.7	0.1
Otros/ Other	0.0	0.0	0.3	0.3	0.0
<b>ASIA</b>	<b>1,138.4</b>	<b>99.7</b>	<b>1,524.5</b>	<b>2,762.6</b>	<b>51.1</b>
Corea del Sur / South Korea	223.9	23.4	163.0	410.3	7.6
China	606.3	58.2	456.1	1,120.6	20.7
Filipinas/ Philippines	1.0	-	43.6	44.6	0.8
Hong Kong	2.7	-	-	2.7	0.1
India	-	2.0	250.6	252.6	4.7
Indonesia	0.2	-	0.0	0.2	0.0
Irán	-	-	3.6	3.6	0.1
Japon/ Japan	53.1	10.6	607.5	671.2	12.4
Malasia/ Malaysia	7.5	-	-	7.5	0.1
Singapur/ Singapore	12.6	-	-	12.6	0.2
Tailandia/ Thailand	5.6	-	0.0	5.6	0.1
Taiwan/ Taipei, China	188.6	5.6	-	194.2	3.6
Turquía/ Turkey	30.0	-	-	30.0	0.6
Vietnam	6.8	-	-	6.8	0.1
Otros/ Other	0.0	0.0	0.0	0.0	0.0
<b>OTROS/ OTHER</b>	<b>189.2</b>	<b>38.6</b>	<b>0.0</b>	<b>227.8</b>	<b>4.2</b>
Australia	7.4	38.6	-	46.0	0.9
Otros/ Other	181.8	0.0	0.0	181.8	3.4
<b>TOTAL</b>	<b>2,983.1</b>	<b>407.7</b>	<b>2,014.4</b>	<b>5,405.3</b>	<b>100.0</b>

(1) Embarques de exportación a consumidores finales y a plantas de tratamiento. / Export shipments to final consumers and treatment plants.

(2) Incluye cátodos, formas especiales y refinado a fuego. / Includes cathodes, special forms and fire refined.

(3) Incluye cementos, concentrados y cobre secundario. / Includes cements, concentrates and secondary copper.

FUENTE/ SOURCE: COMISION CHILENA DEL COBRE.

**VALORES DE LOS EMBARQUES DE EXPORTACION DE COBRE Y SUBPRODUCTOS  
SEGUN PAIS DE DESTINO ENERO-JULIO 2009**

(FOB líquido de retorno en millones de dólares)

**COPPER AND BY-PRODUCTS EXPORT SHIPMENTS VALUE BY DESTINATION JANUARY-JULY 2009 (USD millions FOB)**

PAIS DE DESTINO DESTINATION COUNTRY	COBRE(1) COPPER	PARTICIPACION(%) SHARE (%)	SUBPRODUCTOS(2) BY-PRODUCTS	PARTICIPACION(%) SHARE (%)	TOTAL TOTAL	PARTICIPACION(%) SHARE (%)
<b>EUROPA/ EUROPE</b>	<b>2,454.0</b>	<b>20.2</b>	<b>242.1</b>	<b>28.9</b>	<b>2,696.1</b>	<b>20.8</b>
Alemania/ Germany	359.3	3.0	0.6	0.1	359.9	2.8
Bélgica/ Belgium	180.9	1.5	54.2	6.5	235.1	1.8
Bulgaria	94.7	0.8	11.8	1.4	106.5	0.8
España/ Spain	257.3	2.1	1.4	0.2	258.7	2.0
Finlandia/ Finland	38.9	0.3	3.4	0.4	42.3	0.3
Francia/ France	493.9	4.1	5.6	0.7	499.5	3.8
Grecia/ Greece	42.5	0.3	-	-	42.5	0.3
Holanda/ Netherlands	478.8	3.9	153.7	18.3	632.5	4.9
Italia/ Italy	374.3	3.1	-	-	374.3	2.9
Polonia/ Poland	23.3	0.2	-	-	23.3	0.2
Reino Unido/ United Kingdom	7.8	0.1	6.6	0.8	14.3	0.1
Suecia/ Sweden	75.2	0.6	3.2	0.4	78.4	0.6
Suiza/ Switzerland	27.2	0.2	1.6	0.2	28.8	0.2
Otros/ Other	0.0	0.0	0.0	0.0	0.0	0.0
<b>AMERICA / AMERICAS</b>	<b>1,804.7</b>	<b>14.9</b>	<b>233.8</b>	<b>27.9</b>	<b>2,038.5</b>	<b>15.7</b>
Argentina	28.4	0.2	1.5	0.2	29.9	0.2
Brasil/ Brazil	634.4	5.2	24.3	2.9	658.7	5.1
Canadá / Canada	127.3	1.0	9.4	1.1	136.7	1.1
Colombia	9.5	0.1	-	-	9.5	0.1
Estados Unidos/ USA	721.4	5.9	175.7	20.9	897.1	6.9
México / Mexico	212.5	1.8	22.0	2.6	234.5	1.8
Panamá	30.5	0.3	-	-	30.5	0.2
Perú / Peru	16.2	0.1	-	-	16.2	0.1
Venezuela	24.4	0.2	-	-	24.4	0.2
Otros/ Other	0.0	0.0	1.0	0.1	1.0	0.0
<b>ASIA</b>	<b>7,329.9</b>	<b>60.4</b>	<b>362.9</b>	<b>43.3</b>	<b>7,692.8</b>	<b>59.3</b>
Corea del Sur / South Korea	1,057.2	8.7	26.9	3.2	1,084.1	8.4
China	4,041.1	33.3	225.4	26.9	4,266.6	32.9
Filipinas/ Philippines	45.8	0.4	-	-	45.8	0.4
Hong Kong	94.4	0.8	-	-	94.4	0.7
India	368.4	3.0	1.0	0.1	369.4	2.8
Indonesia	3.1	0.0	0.0	0.0	3.1	0.0
Japón/ Japan	1,085.6	8.9	102.6	12.2	1,188.1	9.2
Malasia/ Malaysia	34.9	0.3	-	-	34.9	0.3
Singapur/ Singapore	16.2	0.1	6.6	0.8	22.7	0.2
Tailandia/ Thailand	23.2	0.2	-	-	23.2	0.2
Taiwan/ Taipei, China	473.6	3.9	0.4	0.0	474.0	3.7
Turquía/ Turkey	73.1	0.6	-	-	73.1	0.6
Vietnam	13.2	0.1	-	-	13.2	0.1
Otros/ Other	0.0	0.0	0.0	0.0	0.0	0.0
<b>OTROS/ OTHER</b>	<b>550.8</b>	<b>4.5</b>	<b>0.3</b>	<b>0.0</b>	<b>551.1</b>	<b>4.2</b>
Australia	117.0	1.0	-	-	117.0	0.9
Otros/ Other	433.8	3.6	0.3	0.0	434.0	3.3
<b>TOTAL</b>	<b>12,139.4</b>	<b>100.0</b>	<b>839.0</b>	<b>100.0</b>	<b>12,978.4</b>	<b>100.0</b>

(1) Embarques de exportación a consumidores finales y a plantas de tratamiento. / Export shipments to final consumers and treatment plants.

(2) Incluye: Barros Anódicos, Metal Doré, Plata, Selenio, Oxido de Molibdeno, Concentrados de Molibdeno y otros./

Includes: Anod slimes, dore, silver, selenium, molybdenum oxide, molybdenum concentrates and others.

FUENTE/ SOURCE: COMISION CHILENA DEL COBRE.

**DESTINO DE LOS EMBARQUES FISICOS DE EXPORTACION DE COBRE (1)**  
**ENERO-JULIO 2009**

(Miles de T.M. de Cobre Fino)

**COPPER EXPORT SHIPMENTS QUANTITY BY DESTINATION COUNTRY JANUARY-JULY 2009 (Thousand MT of fine copper)**

PAIS DE DESTINO DESTINATION COUNTRY	REFINADOS(2) REFINED	BLISTER BLISTER	GRANELES(3) BULK	TOTAL TOTAL	PARTICIPACION PORCENTUAL SHARE (%)
<b>EUROPA/ EUROPE</b>	<b>395.8</b>	<b>59.0</b>	<b>189.3</b>	<b>644.2</b>	<b>20.2</b>
Alemania/ Germany	13.9	2.0	90.3	106.1	3.3
Belgica/ Belgium	-	49.3	0.0	49.4	1.6
Bulgaria	-	-	32.0	32.0	1.0
España/ Spain	44.5	-	24.7	69.2	2.2
Finlandia/ Finland	-	-	11.5	11.5	0.4
Francia/ France	118.1	-	-	118.1	3.7
Grecia/ Greece	9.0	-	-	9.0	0.3
Holanda/ Netherlands	105.9	7.7	-	113.6	3.6
Italia/ Italy	95.0	-	-	95.0	3.0
Polonia/ Poland	-	-	7.4	7.4	0.2
Reino Unido/ United Kingdom	2.2	-	-	2.2	0.1
Suecia/ Sweden	-	-	23.2	23.2	0.7
Suiza/ Switzerland	7.3	-	0.2	7.5	0.2
Otros/ Other	0.0	0.0	0.0	0.0	0.0
<b>AMERICA / AMERICAS</b>	<b>319.8</b>	<b>69.5</b>	<b>76.6</b>	<b>465.9</b>	<b>14.6</b>
Argentina	7.0	-	-	7.0	0.2
Brasil/ Brazil	97.0	0.0	72.2	169.2	5.3
Canada	0.3	35.5	-	35.8	1.1
Colombia	2.3	-	0.2	2.5	0.1
Estados Unidos/ United States	181.8	0.2	-	181.9	5.7
Mexico	19.7	33.8	-	53.5	1.7
Panamá	7.0	-	0.1	7.1	0.2
Peru	-	-	3.8	3.8	0.1
Venezuela	4.7	-	-	4.7	0.1
Otros/ Other	0.0	0.0	0.3	0.3	0.0
<b>ASIA</b>	<b>1,103.1</b>	<b>62.2</b>	<b>766.6</b>	<b>1,931.9</b>	<b>60.7</b>
Corea del Sur / South Korea	186.2	13.8	79.3	279.3	8.8
China	733.3	45.8	238.5	1,017.5	32.0
Filipinas/ Philippines	-	-	14.5	14.5	0.5
Hong Kong	23.1	-	-	23.1	0.7
India	-	-	118.6	118.6	3.7
Indonesia	0.6	-	-	0.6	0.0
Japon/ Japan	13.6	2.6	315.6	331.8	10.4
Malasia/ Malaysia	7.9	-	-	7.9	0.2
Singapur/ Singapore	4.2	-	-	4.2	0.1
Tailandia/ Thailand	5.0	0.1	0.1	5.1	0.2
Taiwan/ Taipei, China	109.3	0.0	-	109.3	3.4
Turquía/ Turkey	17.0	-	-	17.0	0.5
Vietnam	2.8	-	-	2.8	0.1
Otros/ Other	0.0	0.0	0.0	0.0	0.0
<b>OTROS/ OTHER</b>	<b>108.8</b>	<b>32.2</b>	<b>0.0</b>	<b>141.0</b>	<b>4.4</b>
Australia	-	29.7	-	29.7	0.9
Otros/ Other	108.8	2.5	0.0	111.3	3.5
<b>TOTAL</b>	<b>1,927.5</b>	<b>222.9</b>	<b>1,032.5</b>	<b>3,183.0</b>	<b>100.0</b>

(1) Embarques de exportación a consumidores finales y a plantas de tratamiento. / Export shipments to final consumers and treatment plants.

(2) Incluye cátodos, formas especiales y refinado a fuego. / Includes cathodes, special forms and fire refined.

(3) Incluye cementos, concentrados y cobre secundario. / Includes cements, concentrates and secondary copper.

FUENTE/ SOURCE: COMISION CHILENA DEL COBRE.

**VENTAS DE COBRE REFINADO A LA INDUSTRIA MANUFACTURERA NACIONAL**  
(Miles de T.M. de cobre fino)  
**REFINED COPPER SALES TO DOMESTIC MANUFACTURING INDUSTRY (Thousands MT of fine copper)**

PERIODO PERIOD	ELECTROLITICO ELECTROLITHIC	TRES ESTRELLAS	TOTAL	
			PERIODO PERIOD	ACUMULADO ACUMMULATED
2004	82.1	18.3	100.4	-
2005	85.7	17.0	102.7	-
2006	94.0	16.7	110.7	-
2007	95.1	10.2	105.3	-
2008	94.8	8.4	103.2	-
ENE/ JAN / 2006	7.9	1.2	9.1	9.1
FEB	8.1	1.4	9.5	18.6
MAR	10.3	1.6	11.9	30.5
ABR/ APR	8.4	2.0	10.4	40.9
MAY	8.7	1.5	10.2	51.1
JUN	8.1	1.9	10.0	61.1
JUL	8.5	1.6	10.1	71.2
AGO/ AUG	7.7	1.3	9.0	80.2
SEP	6.5	1.3	7.8	88.0
OCT	6.9	1.4	8.3	96.3
NOV	7.7	1.0	8.7	105.0
DIC/ DEC	5.2	0.5	5.7	110.7
ENE/ JAN / 2007	7.2	0.1	7.3	7.3
FEB	6.5	0.5	7.0	14.3
MAR	8.1	1.0	9.1	23.4
ABR/ APR	8.3	1.5	9.8	33.2
MAY	9.1	1.4	10.5	43.7
JUN	8.8	1.3	10.1	53.8
JUL	7.9	1.3	9.2	63.0
AGO/ AUG	7.6	0.5	8.1	71.1
SEP	7.6	1.0	8.6	79.7
OCT	9.7	0.7	10.4	90.1
NOV	9.4	0.5	9.9	100.0
DIC/ DEC	4.9	0.4	5.3	105.3
ENE/ JAN / 2008	8.5	1.4	9.9	9.9
FEB	8.1	1.2	9.3	19.2
MAR	8.3	1.1	9.4	28.6
ABR/ APR	8.8	0.4	9.2	37.8
MAY	9.2	0.4	9.6	47.4
JUN	7.7	0.7	8.4	55.8
JUL	9.5	0.8	10.3	66.1
AGO/ AUG	8.4	0.6	9.0	75.1
SEP	7.8	0.7	8.5	83.6
OCT	7.5	0.4	7.9	91.5
NOV	6.3	0.4	6.7	98.2
DIC/ DEC	4.7	0.3	5.0	103.2
ENE/ JAN / 2009	8.2	0.0	8.2	8.2
FEB	8.9	0.4	9.3	17.5
MAR	8.9	0.8	9.7	27.2
ABR/ APR	8.3	0.8	9.1	36.3
MAY	7.9	0.0	7.9	44.2
JUN	5.0	0.3	5.3	49.5
JUL	7.6	0.3	7.9	57.4
ENE-JUL/ JAN-JUL / 2009	54.8	2.6	57.4	
ENE-JUL/ JAN-JUL / 2008	60.1	6.0	66.1	
VARIACION % / % VARIATION				
ENE-JUL/ JAN-JUL / 2009-2008	-8.8	-56.7	-13.2	

FUENTE/ SOURCE: COMISION CHILENA DEL COBRE.

**ANTECEDENTES DE LOS CONTRATOS DE  
EXPORTACIONES CHILENAS DE CONCENTRADOS  
Y CATODOS DE COBRE /  
CHILEAN COPPER CONCENTRATES AND CATHODES  
EXPORT CONTRACTS INFORMATION**

## Características de los contratos de exportación de concentrados 2009 Characteristics of 2009 concentrates export contracts

### Crterios y definiciones / Criteria and definitions:

#### 1. Tipo de Contrato / Type of Contract:

La clasificación es la siguiente / The classification is the following :

<b>Tipo / type</b>	<b>Contratos incluidos / Included contracts</b>
Abastecimiento Anual (1)	Anual / Annual
Abastecimiento Evergreen (2)	Evergreen
Abastecimiento Largo Plazo (3)	Largo plazo / Long term
Spot (4)	Spot

- (1) Venta con entrega durante todo el año. Normalmente, tienen los términos acordados para todas las cuotas.  
/ Sale with delivery during all the year. Normally, they have the terms agreed for all the quotas.
- (2) Venta con compromiso de entrega superior a un año, con vigencia sujeta a renovación periódica por las partes. / Sale with commitment of delivery over a year, with duration depending to periodic renewal by the parts.
- (3) Venta con compromiso de entrega superior a un año, donde se fija la mayoría de las condiciones dejando algunos términos comerciales bajo negociación periódica durante la vida del contrato.  
/ Sale with commitment of delivery over a year, where the majority of the conditions are fixed leaving some commercial terms for periodic negotiation during the life of the contract.
- (4) Venta ocasional. / Occasional Sale.

#### 2. Q/P

Período de apreciación (Quotation Period), período que se toma como referencia para efectos de la valoración del producto./ Quotation Period, is the period taken as a reference in order to appraise the product.

En los contratos evergreen la relación contractual está siempre vigente, a diferencia de los contratos anuales que duran un período. / Evergreen contracts are always in force, meanwhile annual contracts last for only one period.

Los contratos de abastecimiento de largo plazo (más de un año), no necesariamente incorporan en el contrato inicial los Q/P; estos se establecen posteriormente./ Long-term supplies contract (more than one year), do not necessarily add Q/P to the initial contract; these are established lately.

Otra situación que genera desconocimiento inicial del Q/P a utilizar, corresponde a los contratos que incorporan una cláusula de opción de fijar el Q/P durante el período de vigencia del contrato./ Another situation leading to an initial disregard of the Q/P to be used, corresponds to contracts which incorporate a clause with the option to fix Q/P during the contract duration period.

Para efectos de agregar la información de los contratos se han sumado los Q/P según la siguiente tabla:/ To add information of the contracts, Q/P have been added according to the following table:

<b>Q/P</b>	<b>Definición/ Definition</b>	<b>Agrupados bajo:/ Grouped under:</b>
A + 2	Segundo mes después del arribo / Second month upon arrival	A + 2
A + 3	Tercer mes después del arribo / Third month upon arrival	A + 3
EFE	Entre fechas distintas a mensual / Between dates different to monthly	EFE
M / M + 3	Tercer mes después del M / Thirth month following to the M	M / M + 3
M / M + 4	Cuarto mes después del M / Fourth month following to the M	M / M + 4
M / M + 5	Quinto mes después del M / Fifth month following to the M	M / M + 5
A + 1	Primer mes después del arribo / First month upon arrival	Otros/ Other
A + 4	Cuarto mes después del arribo / Fourth month upon arrival	
M / M + 1	Primer mes después del M / First month following to the M	
M / M + 2	Segundo mes después del M / Second month following to the M	
MEE / EMS + 3	Tercer mes después del MEE / Thirth month following to the EMS	
MEE / EMS + 4	Cuarto mes después del MEE / Fourth month following to the EMS	

**Definiciones / Definitions:**

M: Mes contractual de embarque / M: Contractual month of shipment

MEE: Mes efectivo del embarque / EMS: Effective month of shipment

**Nota:** Las exportaciones de concentrados informadas a la fecha, están sujetas a eventuales modificaciones que podrían realizar los exportadores./ **Note:** Concentrates exports informed up to date, are subject to eventual modifications by the exporters.

**COMPROMISOS DE EXPORTACION DE CONCENTRADOS DE COBRE**  
**Tonelage y TC-RC Comprometido: Año 2009**  
**COPPER CONCENTRATES EXPORT AGREEMENTS**  
**Tonnage and TC-RC Agreed in Year 2009**

**I. SEGUN TIPO DE CONTRATO Y REGION / BY TYPE OF CONTRACT AND REGION**

TONELAJE (TMS) / TONNAGE (MT) (1)	DESTINO CONTRACTUAL / CONTRACTUAL DESTINATION				TOTAL
<b>Tipo de Contrato / Type of Contract</b>	<b>ASIA</b>	<b>EUROPA / Europe</b>	<b>Sudamérica y otros / South America and Others</b>	<b>Comerciantes/ Trader</b>	
<b>Abastecimiento / Supply</b>	<b>1,491,443</b>	<b>407,067</b>	<b>79,337</b>	<b>0</b>	<b>1,977,847</b>
Abastecimiento Anual	154,870	96,000			250,870
Abastecimiento Evergreen	407,228	133,367			540,595
Abastecimiento Largo Plazo	929,345	177,700	79,337		1,186,382
<b>Spot</b>	<b>392,400</b>	<b>70,000</b>	<b>46,000</b>	<b>40,000</b>	<b>548,400</b>
<b>Total contratos / Total contracts (1)</b>	<b>1,883,843</b>	<b>477,067</b>	<b>125,337</b>	<b>40,000</b>	<b>2,526,247</b>
TC - RC (2)	DESTINO CONTRACTUAL / CONTRACTUAL DESTINATION				TOTAL
<b>Tipo de Contrato / Type of Contract</b>	<b>ASIA</b>	<b>EUROPA / Europe</b>	<b>Sudamérica y otros / South America and Others</b>	<b>Comerciantes/ Trader</b>	
<b>Abastecimiento / Supply</b>					
<b>TC ponderado (US\$/TM) / Weighted TC (USD/MT)</b>	<b>60.6</b>	<b>70.1</b>	<b>54.4</b>		<b>62.4</b>
Abastecimiento Anual	65.7	67.8			66.5
Abastecimiento Evergreen	56.3	77.0			61.4
Abastecimiento Largo Plazo	61.8	66.2	54.4		62.0
TC Minimo / Maximo (Low / High)	(42,0 ; 77,4)	(45,0 ; 85,0)	(45,0 ; 75,0)		<b>(42,0 ; 85,0)</b>
<b>RC ponderado (¢/lb) / Weighted RC (¢/lb)</b>	<b>6.0</b>	<b>7.0</b>	<b>5.4</b>		<b>6.2</b>
Abastecimiento Anual	6.1	6.8			6.4
Abastecimiento Evergreen	5.6	7.7			6.1
Abastecimiento Largo Plazo	6.2	6.6	5.4		6.2
RC Minimo / Maximo (Low / High)	(2,9 ; 8,3)	(4,5 ; 8,5)	(4,5 ; 7,5)		<b>(2,9 ; 8,5)</b>
<b>Spot</b>					
<b>TC ponderado (US\$/TM) / Weighted TC (USD/MT)</b>	<b>56.7</b>	<b>26.9</b>	<b>12.8</b>	<b>55.0</b>	<b>48.8</b>
Minimo / Maximo (Low / High)	(9,0 ; 165,0)	(19,0 ; 61,0)	(5,0 ; 25,0)	(45,0 ; 65,0)	<b>(5,0 ; 165,0)</b>
<b>RC ponderado (¢/lb) / Weighted RC (¢/lb)</b>	<b>5.5</b>	<b>2.7</b>	<b>1.3</b>	<b>5.5</b>	<b>4.8</b>
Minimo / Maximo (Low / High)	(0,9 ; 13,0)	(1,9 ; 6,1)	(0,5 ; 2,5)	(4,5 ; 6,5)	<b>(0,5 ; 13,0)</b>
<b>Total</b>					
<b>TC ponderado (US\$/TM) / Weighted TC (USD/MT)</b>	<b>59.8</b>	<b>63.8</b>	<b>39.2</b>	<b>55.0</b>	<b>59.4</b>
<b>RC ponderado (¢/lb) / Weighted RC (¢/lb)</b>	<b>5.9</b>	<b>6.4</b>	<b>3.9</b>	<b>5.5</b>	<b>5.9</b>

**II. SEGUN Q/P Y REGION / BY Q/P AND REGION**

TONELAJE (TMS) / TONNAGE (MT) (2)	DESTINO CONTRACTUAL / CONTRACTUAL DESTINATION				TOTAL
<b>Q/P (3)</b>	<b>ASIA</b>	<b>EUROPA / Europe</b>	<b>Sudamérica y otros / South America and Others</b>	<b>Comerciantes/ Trader</b>	
<b>A+2</b>	110,011				110,011
<b>A+3</b>	602,462	70,000			672,462
<b>EFE</b>	84,500	158,357			242,857
<b>M+3</b>	126,000	90,000	74,378		290,378
<b>M+4</b>	295,000	25,000	30,000	40,000	390,000
<b>M+5</b>	364,000				364,000
<b>Otros</b>	301,870	133,710	20,959		456,539
<b>Total</b>	<b>1,883,843</b>	<b>477,067</b>	<b>125,337</b>	<b>40,000</b>	<b>2,526,247</b>

TC - RC (2)	DESTINO CONTRACTUAL / CONTRACTUAL DESTINATION				TOTAL
<b>Q/P (3)</b>	<b>ASIA</b>	<b>EUROPA / Europe</b>	<b>Sudamérica y otros / South America and Others</b>	<b>Comerciantes/ Trader</b>	
<b>A+2</b>					
TC ponderado (US\$/TM) / Weighted TC (USD/MT)	47.5				47.5
RC ponderado (¢/lb) / Weighted RC (¢/lb)	4.8				4.8
<b>A+3</b>					
TC ponderado (US\$/TM) / Weighted TC (USD/MT)	57.9	69.6			59.1
RC ponderado (¢/lb) / Weighted RC (¢/lb)	5.8	7.0			5.9
<b>EFE</b>					
TC ponderado (US\$/TM) / Weighted TC (USD/MT)	62.5	74.2			70.4
RC ponderado (¢/lb) / Weighted RC (¢/lb)	6.2	7.4			7.0
<b>M+3</b>					
TC ponderado (US\$/TM) / Weighted TC (USD/MT)	67.6	63.3	55.0		63.1
RC ponderado (¢/lb) / Weighted RC (¢/lb)	6.8	6.3	5.5		6.3
<b>M+4</b>					
TC ponderado (US\$/TM) / Weighted TC (USD/MT)	61.4	52.2	8.3	55.0	55.9
RC ponderado (¢/lb) / Weighted RC (¢/lb)	6.1	5.2	0.8	5.5	5.6
<b>M+5</b>					
TC ponderado (US\$/TM) / Weighted TC (USD/MT)	60.3				60.3
RC ponderado (¢/lb) / Weighted RC (¢/lb)	6.0				6.0
<b>Otros</b>					
TC ponderado (US\$/TM) / Weighted TC (USD/MT)	62.2	50.8	26.9		57.0
RC ponderado (¢/lb) / Weighted RC (¢/lb)	5.9	5.1	2.7		5.5
<b>Total</b>					
<b>TC ponderado (US\$/TM) / Weighted TC (USD/MT)</b>	<b>59.8</b>	<b>63.8</b>	<b>39.2</b>	<b>55.0</b>	<b>59.4</b>
<b>RC ponderado (¢/lb) / Weighted RC (¢/lb)</b>	<b>5.9</b>	<b>6.4</b>	<b>3.9</b>	<b>5.5</b>	<b>5.9</b>

Cifras provisionarias. Ver características de los contratos para los Q/P. / Provisional figures. Please review contracts for Q/P characteristics.

(1) Incluye todos los contratos registrados a la fecha. / Includes contracts registered up date.

(2) Se excluyen contratos sin informacion y casos especiales. / Excludes contracts without information and special cases.

(3) Condiciones incluidas según su importancia relativa en los Q/P totales. / Included conditions depends on relative importance on Q/P.

Fuente / Source: Elaborado por la Comisión Chilena del Cobre

## Características de los contratos de exportación de cátodos 2009 Characteristics of 2009 cathodes export contracts

### Crterios y definiciones / Criteria and definitions:

#### 1. Tipo de Producto / Type of Product:

Los cátodos estándar incluyen tanto a aquellos con defectos físicos como los que no se encuentran registrados en Bolsas de Metales. El cátodo grado A corresponde a aquel registrado en Bolsa de Metales / Standard cathodes includes those with physical defects and those not registered in Metal Exchanges. A grade cathode corresponds to those registered in Metal Exchanges.

#### 2. Q/P

Período de apreciación (Quotation Period), período que se toma como referencia para efectos de la valoración del producto. Para efectos de agregar la información de los contratos se han sumado los Q/P según la siguiente tabla:/ The Quotation Period, is the period taken as a reference in order to appraise the product. To add to the information of the contracts, the Q/P have been added according to the following table:

Q/P	Definición/ Definition	Agrupados bajo:/ Crowed under:
EFE	Entre fechas distintas a mensual/ Between dates different to monthly	EFE
M / M	Mes contractual de embarque/ Contractual month of shipment	M / M
M / M + 1	Mes siguiente al M / Month following to the M	M / M +1
M / M - 1	Primer mes anterior al M / First month prior to the M	
M / M + 2	Segundo mes luego del M / Second month following to the M	
M / M +3	Tercer mes luego del M / Thirth month following to the M	
MEE / EMS	Mes efectivo del embarque / EMS: Effective month of shipment	
PRFIJO	Precio fijo/ Fixed price	

Definiciones / Definitions:

M: Mes contractual de embarque / M: Contractual month of shipment

MEE: Mes efectivo del embarque / EMS: Effective month of shipment

Nota: Las exportaciones de cátodos informadas a la fecha, están sujetas a eventuales modificaciones que podrían realizar los exportadores./ Note: Cathodes exports informed up to date, are subject to eventual modifications by the exporters.

**COMPROMISOS DE EXPORTACION DE CATODOS DE COBRE**  
**Tonelaje y Premio Comprometido: Año 2009**  
**COPPER CATHODES EXPORT AGREEMENTS**  
**Tonnage and Premium Agreed in Year 2009**

**I. SEGUN TIPO DE CONTRATO Y PRODUCTO/ BY TYPE OF CONTRACT AND PRODUCT**

TONELAJE / TONNAGE (MT)	DESTINO CONTRACTUAL / CONTRACTUAL DESTINATION					TOTAL
	ASIA	EUROPA / Europe	Norteamérica / North America	Sudamérica y otros / South America and Others	Comerciantes/ Trader	
<b>Tipo de Contrato-Producto / Type of Contract -Product</b>						
<b>Abastecimiento / Supply</b>						
Estándar / Standard	199,220	105,272	27,250	30,600	8,750	371,092
Grado A / A Grade	933,520	354,079	129,208	107,650	72,050	1,596,508
Off Grade	35,000	30,208	2,850	13,500		81,558
<b>Total abastecimiento / Total supply</b>	<b>1,167,740</b>	<b>489,558</b>	<b>159,308</b>	<b>151,750</b>	<b>80,800</b>	<b>2,049,157</b>
<b>Spot</b>						
Estándar / Standard	91,603	32,339	9,158	1,944	24,650	159,694
Grado A / A Grade	222,000	82,741	53,692	14,875	167,125	540,433
Off Grade	32,262	10,980	27,999	200	14,700	86,141
<b>Total spot</b>	<b>345,865</b>	<b>126,060</b>	<b>90,849</b>	<b>17,019</b>	<b>206,475</b>	<b>786,269</b>
<b>Total contratos / Total contracts</b>	<b>1,513,606</b>	<b>615,618</b>	<b>250,158</b>	<b>168,769</b>	<b>287,275</b>	<b>2,835,426</b>

PREMIO PONDERADO / WEIGHTED PREMIUM (USD)	DESTINO CONTRACTUAL / CONTRACTUAL DESTINATION					TOTAL
	ASIA	EUROPA / Europe	Norteamérica / North America	Sudamérica y otros / South America and Others	Comerciantes/ Trader	
<b>Tipo de Contrato-Producto / Type of Contract -Product</b>						
<b>Abastecimiento / Supply</b>						
Estándar / Standard	20.7	57.7	49.1	33.7	30.8	45.7
Grado A / A Grade	99.7	101.3	103.8	28.3	47.7	98.6
Off Grade	-45.8	-8.0	-110.0	-138.9		-10.8
<b>Promedio abastecimiento / Supply average</b>	<b>97.0</b>	<b>64.4</b>	<b>101.9</b>	<b>24.1</b>	<b>44.6</b>	<b>87.3</b>
Minimo / Maximo (Low / High)	(-190.0 ; 150.0)	(-182.0 ; 150.0)	(-110.0 ; 150.0)	(-170.0 ; 150.0)	(-70.0 ; 85.0)	(-190.0 ; 150.0)
<b>Spot</b>						
Estándar / Standard	91.5	23.1	113.6	-42.4	-32.1	72.7
Grado A / A Grade	78.7	61.9	50.6	30.5	69.9	69.1
Off Grade	-38.1	-61.0	-2.2	-147.0	-176.6	-66.9
<b>Promedio spot / Spot average</b>	<b>73.8</b>	<b>40.3</b>	<b>60.4</b>	<b>3.6</b>	<b>30.5</b>	<b>55.0</b>
Minimo / Maximo (Low / High)	(-165.0 ; 200.0)	(-150.0 ; 121.5)	(-147.0 ; 160.0)	(-147.0 ; 60.0)	(-250.0 ; 145.0)	(-250.0 ; 200.0)
<b>Promedio Total / Total average</b>	<b>95.9</b>	<b>63.2</b>	<b>98.9</b>	<b>22.9</b>	<b>35.4</b>	<b>85.2</b>

**II. SEGUN BOLSAS DE METALES Y Q/P / BY METAL EXCHANGES AND Q/P**

TONELAJE / TONNAGE (MT)	DESTINO CONTRACTUAL / CONTRACTUAL DESTINATION					TOTAL
	ASIA	EUROPA / Europe	Norteamérica / North America	Sudamérica y otros / South America and Others	Comerciantes/ Trader	
<b>Bolsa - Q/P / Exchange - Q/P (1)</b>						
<b>LME</b>	<b>1,513,606</b>	<b>615,618</b>	<b>99,046</b>	<b>144,769</b>	<b>287,275</b>	<b>2,660,314</b>
EFE	79,644	113,941	9,942	24,500	18,000	246,027
M / M	72,385	55,188	40,600	27,550	80,700	276,423
M+1 M.+1	1,315,793	443,117	38,504	74,219	188,575	2,060,208
Otros Q/P / Other Q/P	45,783	3,372	10,000	18,500		77,655
<b>COMEX</b>	<b>0</b>	<b>0</b>	<b>151,112</b>	<b>24,000</b>	<b>0</b>	<b>175,112</b>
EFE			1,257	4,000		5,257
M / M						0
M+1 M.+1			127,155			127,155
Otros Q/P / Other Q/P			22,700	20,000		42,700
<b>Total</b>	<b>1,513,606</b>	<b>615,618</b>	<b>250,158</b>	<b>168,769</b>	<b>287,275</b>	<b>2,835,426</b>

PREMIO PONDERADO / WEIGHTED PREMIUM (USD)	DESTINO CONTRACTUAL / CONTRACTUAL DESTINATION					TOTAL
	ASIA	EUROPA / Europe	Norteamérica / North America	Sudamérica y otros / South America and Others	Comerciantes/ Trader	
<b>Bolsa - Q/P / Exchange - Q/P (1)</b>						
<b>LME</b>						
EFE	73.9	66.2	98.6	-84.9	50.0	61.5
M / M	82.2	12.9	71.9	13.9	39.4	45.4
M+1 M.+1	96.6	64.9	105.5	40.4	33.1	88.0
Otros Q/P / Other Q/P	71.0	48.7		7.0		52.8
<b>Promedio LME / LME Average</b>	<b>95.9</b>	<b>63.2</b>	<b>104.2</b>	<b>19.5</b>	<b>35.4</b>	<b>85.8</b>
<b>COMEX</b>						
EFE			9.8	40.4		37.5
M / M						
M+1 M.+1			27.8			27.8
Otros Q/P / Other Q/P			43.0	40.4		41.3
<b>Promedio COMEX / COMEX Average</b>			<b>30.7</b>	<b>40.4</b>		<b>33.7</b>
<b>Promedio Total / Total average</b>	<b>95.9</b>	<b>63.2</b>	<b>98.9</b>	<b>22.9</b>	<b>35.4</b>	<b>85.2</b>

Cifras provisionarias. Ver características de los contratos para los Q/P. / Provisional figures. Please review contracts for Q/P characteristics.

(1) Condiciones incluidas según su importancia relativa en los Q/P totales. / Included conditions depends on relative importance on Q/P.

Fuente / Source: Elaborado por la Comisión Chilena del Cobre

Este trabajo fue efectuado por:

Juan Ocaranza A.  
Juan Ciudad L.  
Oscar Arce U.

**SEPTIEMBRE, 2009 - SEPTEMBER, 2009**