

BOLETIN MENSUAL

MONTHLY REPORT

ENERO 2009
JANUARY 2009

Está permitida la reproducción total o parcial de este documento citando la fuente.
Esta es una publicación de la Comisión Chilena del Cobre, institución autónoma de carácter público
que tiene entre su misión la difusión de la actividad minera.

Agustinas 1161, 4° piso. Teléfono (56 2) 3828100. www.cochilco.cl
Total or partial reproduction is allowed, indicating its source: "Comisión Chilena del Cobre"

I. RESUMEN PRINCIPALES ESTADISTICAS ENERO 2009	
<i>MAIN STATISTICS SUMMARY JANUARY 2009</i>	
II. ANTECEDENTES DE PRECIOS / PRICE INFORMATION	
2.1 Precio del cobre refinado, nominal y real; B.M.L. y COMEX; mensual 2005 - 2008	1
<i>Refined copper prices, nominal and real; LME and COMEX; 2005-2008 monthly</i>	
2.2 Precio del cobre refinado, nominal y real; B.M.L. y COMEX; anual 1935 - 2008	2
<i>Refined copper prices, nominal and real; LME and COMEX; 1935-2008 annual</i>	
2.3 Precio promedio del cobre en la B.M.L., mensual, acumulado anual y 12 meses, nominal	3
<i>LME copper average prices; monthly, accumulated per annum, and 12 months, nominal</i>	
2.4 Precios diarios del cobre en bolsas - cátodos grado "A", Enero 2009	4
<i>Exchanges daily copper prices - A grade cathodes, January 2009</i>	
2.5 Stocks de cobre en bolsas-cátodos grado "A"	5
<i>Copper warehouse stocks - A grade cathodes</i>	
2.6 Volúmenes de cobre transado en bolsas - cátodos grado "A"	6
<i>Copper ring volume - A grade cathodes</i>	
2.7 Volúmenes e intereses abiertos de futuros y opciones de cobre en la B.M.L.	7
<i>LME copper futures & option volume and open interest</i>	
2.8 Precio promedio del cobre en Estados Unidos, productores, COMEX y chatarra, nominales	8
<i>Copper average prices in U.S.A.: producers, COMEX, and scrap, nominal</i>	
2.9 Precios promedios metales preciosos, nominales	9
<i>Precious metals average prices, nominal</i>	
2.10 Precios diarios Oro: Enero 2009	10
<i>Gold daily prices: January 2009</i>	
2.11 Precios diarios Plata: Enero 2009	11
<i>Silver daily prices: January 2009</i>	
2.12 Precios promedios otros metales, nominales	12
<i>Other metals average prices, nominal</i>	
2.13 Precios diarios Otros Metales Bolsa de Metales de Londres, nominal: Enero 2009	13
<i>Other metals daily prices LME, nominal: January 2009 prices</i>	
2.14 Tasas de cambio promedio EE.UU., US\$/£ , DM/£ , YEN/US\$ y Chile\$/US\$	14
<i>Average exchange rates USA, USD/£ , DM/£ , YEN/USD, and Ch\$/USD</i>	
III. ANTECEDENTES DE PRODUCCION Y EXPORTACIONES	
<i>PRODUCTION AND EXPORTS INFORMATION</i>	
3.1 Producción chilena de cobre y molibdeno comerciable	15
<i>Chilean copper and molybdenum production</i>	
3.2 Producción chilena de cobre comerciable por empresa	16
<i>Chilean copper production by company</i>	
3.3 Evolución de exportaciones por destinos y productos	17
<i>Exports evolution by destination and product type</i>	
3.4 Valores de los embarques de exportación de cobre y subproductos	18
<i>Copper and by-products export shipments value</i>	
3.5 Embarques físicos de exportación de cobre y concentrados de molibdenita	19
<i>Copper and molybdenite concentrates export shipments quantity</i>	
3.6 Embarques físicos de exportación de cobre por exportador	20
<i>Copper export shipments quantity by exporter</i>	
3.7 Valores de los embarques de exportación de cobre y subproductos según país de destino - año 2007	21
<i>Copper and by-products export shipments value by destination country - year 2007</i>	
3.8 Embarques físicos de exportación de cobre según país de destino - año 2007	22
<i>Copper export shipments quantity by destination country - year 2007</i>	
3.9 Valores de los embarques de exportación de cobre y subproductos según país de destino - año 2008	23
<i>Copper and by-products export shipments value by destination country - year 2008</i>	
3.10 Embarques físicos de exportación de cobre según país de destino - año 2008	24
<i>Copper export shipments quantity by destination country - year 2008</i>	
3.11 Entregas de cobre refinado a la industria manufacturera nacional	25
<i>Refined copper sales to domestic manufacturing industry</i>	
IV. ANTECEDENTES DE LOS CONTRATOS DE EXPORTACIONES CHILENAS DE CONCENTRADOS Y CATODOS DE COBRE/ CHILEAN COPPER CONCENTRATES AND CATHODES EXPORT CONTRACTS INFORMATION	
4.1 Características de los contratos de exportación de concentrados de cobre - año 2008	27
<i>Characteristics of copper concentrates export contracts - year 2008</i>	
4.2 Contratos de exportación de concentrados de cobre - año 2008	28
<i>Copper concentrates export contracts - year 2008</i>	
4.3 Características de los contratos de exportación de cátodos de cobre - año 2008	29
<i>Characteristics of copper cathodes export contracts - year 2008</i>	
4.4 Contratos de exportación de catodos de cobre - año 2008	30
<i>Copper cathodes export contracts - year 2008</i>	

Resumen Principales Estadísticas Enero 2009 Main Statistics Summary - January 2009

Precio del Cobre LME / Copper price (¢US\$/lb)

Promedio Mensual Enero 2009 /	
January 2009 Monthly Avg	146.088
Promedio año a la fecha / Up to date annual average	
	146.088
Valor Mínimo año 2009 / Minimum value	
	138.368
Valor Máximo año 2009 / Maximum value	
	153.791

Precio del Cobre Comex/ COMEX copper price (¢US/lb)

Promedio Primera Posición Enero /	
January first position avg	147.848

Precio Promedio Principales Metales Enero

January Main Metals Average Price	
Plata / Silver (US\$/ Onza; London Spot)	11.29
Oro / Gold (US\$/ Onza; London Inicial)	857.7
Aluminio /Aluminum (¢US\$/LB; LME)	64.1
Plomo / Lead (¢US\$/LB; LME)	51.4
Zinc (¢US\$/LB; LME)	53.9
Estaño / Tin (¢US\$/LB; Comerciantes EEUU / US Merchants)	546.5
Níquel / Nickel (¢US\$/LB; LME)	512.9
Molibdeno / Molybdenum (US\$/LB; Comerciantes EEUU)	9.33

Exportaciones Chilenas de Cobre (Millones de US\$)

Chilean Copper Exports (USD Millions)	
Dic / Dec 2008	1,316.2

Acumulado / Accumulated:	
Ene-Dic 2007/ Jan-Dec 2007	37,913.2
Ene-Dic 2008/ Jan-Dec 2008	36,550.2
Variación / Variation	-3.6%

Stocks Cobre Bolsas / Metal Exchanges Copper Stocks (TMF)

	31-12-2008 30-01-2009		Variación % /
			% Variation
LME	339,775	491,525	44.7%
COMEX	31,311	36,505	16.6%
SHANGHAI	17,822	16,567	-7.0%
TOTAL	388,908	544,597	40.0%

Producción Chilena de Cobre Comercializable (Miles de TMF)

Chilean Copper Production (thousand FMT)	
Dic / Dec 2008	483.1

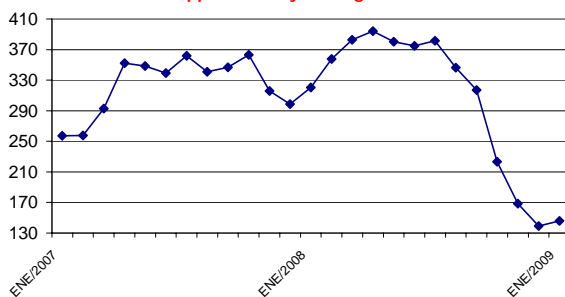
Acumulado / Accumulated:	
Ene-Dic 2007/ Jan-Dec 2007	5,557.0
Ene-Dic 2008/ Jan-Dec 2008	5,330.1
Variación / Variation	-4.1%

Exportaciones Chilenas de Cobre (Miles de TMF)

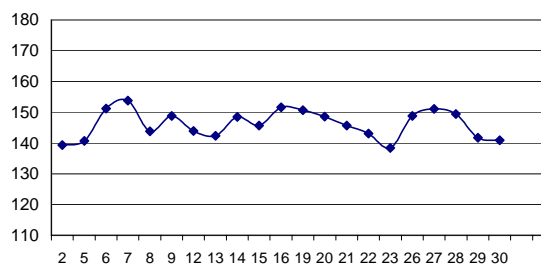
Chilean Copper Exports (Thousands FMT)	
Dic / Dec 2008	373.4

Acumulado / Accumulated:	
Ene-Dic 2007/ Jan-Dec 2007	5,673.4
Ene-Dic 2008/ Jan-Dec 2008	5,405.3
Variación / Variation	-4.7%

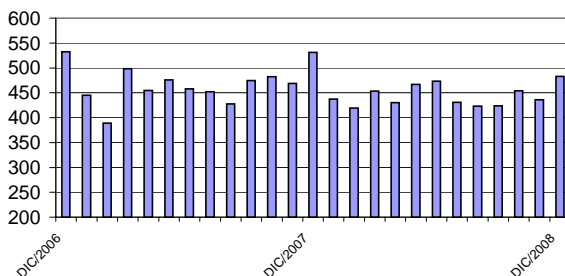
Precio Promedio Mensual Cobre
¢US\$/lb
Copper Monthly Average Price



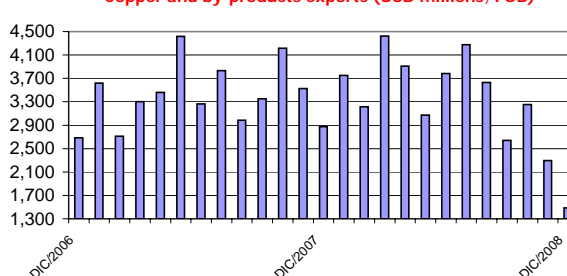
Evolución diaria Precio del Cobre LME
(¢US\$/lb; enero 2009)
Daily copper price evolution - january 2009



Producción Chilena de Cobre Comercializable
(miles de TMF)
Chilean Copper Production (thousand FMT)



Valor de Exportaciones de Cobre y
Subproductos
(Millones de US\$; FOB)
Copper and by-products exports (USD millions; FOB)



**ANTECEDENTES DE PRECIOS /
PRICE INFORMATION**

PRECIO DEL COBRE REFINADO, NOMINAL Y REAL
(Centavos de dólar por libra)
REFINED COPPER PRICES, NOMINAL AND CONSTANT (USD cents/lb.)

	NOMINAL		REAL / CONSTANT(1)	
	B.M.L. / LME	COMEX	B.M.L./ LME	COMEX
ENE/ JAN / 2006	214.746	218.258	223.9	227.6
FEB	225.998	225.079	239.3	238.3
MAR	231.461	232.409	244.4	245.4
ABR/ APR	289.745	296.853	302.1	309.5
MAY	364.954	375.861	377.1	388.3
JUN	326.478	339.648	336.7	350.3
JUL	349.815	362.321	359.3	372.1
AGO/ AUG	349.069	353.061	356.1	360.2
SEP	344.837	346.358	357.1	358.7
OCT	340.212	339.400	359.3	358.4
NOV	318.838	316.560	331.8	329.4
DIC/ DEC	302.778	301.413	313.2	311.8
ENE-DIC/ JAN-DEC	305.295	308.935	316.7	320.8
ENE/ JAN / 2007	257.171	258.305	268.6	269.8
FEB	257.479	259.661	264.4	266.7
MAR	292.680	292.270	296.1	295.7
ABR/ APR	352.281	350.840	352.1	350.6
MAY	348.457	348.248	344.4	344.2
JUN	339.100	338.764	334.2	333.9
JUL	361.691	361.595	353.8	353.7
AGO/ AUG	340.807	336.783	338.6	334.6
SEP	346.952	345.616	342.6	341.2
OCT	363.256	358.887	356.2	351.9
NOV	316.005	312.924	302.4	299.5
DIC/ DEC	298.812	302.170	286.6	289.8
ENE-DIC/ JAN-DEC	323.246	322.172	320.0	319.3
ENE/ JAN / 2008	320.283	320.171	303.1	303.0
FEB	357.780	358.955	335.5	336.6
MAR	382.800	381.108	349.0	347.4
ABR/ APR	393.942	393.939	353.5	353.5
MAY	380.235	377.421	331.3	328.9
JUN	374.694	368.974	320.1	315.2
JUL	381.655	375.939	318.1	313.4
AGO/ AUG	346.304	343.640	298.1	295.8
SEP	317.100	314.293	275.5	273.0
OCT	223.426	218.565	205.3	200.9
NOV	168.600	168.497	162.7	162.6
DIC/ DEC	139.343	138.798	139.3	138.8
ENE-DIC/ JAN-DEC	315.316	313.358	282.6	280.8
ENE/ JAN / 2009	146.088	147.848	146.1	147.8
ENE/ JAN / 2009	146.088	147.848	146.1	147.8
ENE/ JAN / 2008	320.283	320.171	303.1	303.0
VARIACION % / % VARIATION				
ENE/ JAN 2009/2008	-54.4	-53.8	-51.8	-51.2

(1) Deflactor: Índice de Precios al por Mayor de Estados Unidos (PPI, all commodities), base diciembre 2008=100./ Deflator: U.S. Producer Price Index (PPI, all Commodities). December 2008 = 100.

PRECIO DEL COBRE REFINADO, NOMINAL Y REAL
(Centavos de dólar por libra)
REFINED COPPER PRICES, NOMINAL AND CONSTANT (USD cents/lb.)

AÑO	NOMINAL		REAL / CONSTANT(1)	
	B.M.L. / LME	COMEX	B.M.L./ LME	COMEX
1935	6.973	N.D.	86.5	N.D.
1936	8.531	N.D.	104.4	N.D.
1937	12.021	N.D.	138.1	N.D.
1938	8.885	N.D.	111.8	N.D.
1939	8.453	N.D.	125.0	N.D.
1940	10.601	N.D.	134.2	N.D.
1941	11.159	N.D.	126.8	N.D.
1942	11.168	N.D.	112.3	N.D.
1943	11.168	N.D.	107.6	N.D.
1944	11.168	N.D.	106.7	N.D.
1945	11.155	N.D.	105.1	N.D.
1946	13.893	N.D.	114.6	N.D.
1947	23.477	N.D.	157.2	N.D.
1948	24.116	N.D.	149.6	N.D.
1949	21.899	N.D.	142.5	N.D.
1950	22.353	N.D.	139.6	N.D.
1551	27.541	N.D.	155.0	N.D.
1952	32.349	N.D.	186.5	N.D.
1953	32.180	N.D.	187.8	N.D.
1954	31.265	N.D.	182.6	N.D.
1955	43.898	42.729	255.8	249.3
1956	41.072	39.821	231.9	224.7
1957	27.455	27.227	151.0	149.7
1958	24.730	25.279	133.9	137.0
1959	29.735	31.153	160.5	168.2
1960	30.751	30.732	166.1	166.1
1961	28.724	29.933	155.6	162.1
1962	29.263	29.227	158.2	157.9
1963	29.301	29.796	158.7	161.5
1964	44.110	42.940	238.5	232.3
1965	58.734	50.461	310.9	267.1
1966	69.465	63.159	355.8	323.8
1967	51.127	50.388	261.9	258.3
1968	56.101	51.125	280.2	255.2
1969	66.563	63.863	319.7	306.3
1970	64.195	61.275	297.8	284.2
1971	49.266	49.050	221.6	220.8
1972	48.556	49.140	208.9	211.3
1973	80.776	78.445	305.4	296.7
1974	93.272	90.156	303.9	293.4
1975	55.942	55.543	164.4	162.9
1976	63.611	64.072	178.0	179.5
1977	59.290	60.294	156.9	159.4
1978	61.886	62.172	151.3	152.2
1979	89.830	88.466	195.8	192.3
1980	99.174	96.758	189.7	185.2
1981	78.949	78.655	138.2	137.5
1982	67.057	65.820	115.1	112.7
1983	72.173	71.901	122.2	121.7
1984	62.449	61.320	103.3	101.3
1985	64.281	60.988	106.8	101.3
1986	62.287	61.649	106.6	105.4
1987	81.086	77.837	134.4	129.4
1988	117.937	114.600	188.9	183.4
1989	129.113	124.911	197.3	190.8
1990	120.879	119.085	177.9	175.4
1991	106.066	104.875	155.9	154.1
1992	103.573	102.721	151.3	150.1
1993	86.713	85.283	125.0	122.9
1994	104.903	107.052	148.7	152.1
1995	133.198	134.717	182.8	185.0
1996	103.894	105.872	139.7	142.1
1997	103.224	103.579	138.6	139.1
1998	74.974	75.077	103.3	103.3
1999	71.380	72.111	97.3	98.3
2000	82.294	83.971	106.2	108.4
2001	71.566	72.567	91.3	92.5
2002	70.647	71.672	92.4	93.7
2003	80.734	81.050	100.1	100.5
2004	130.106	128.972	151.7	150.5
2005	167.087	168.227	181.2	182.6
2006	305.295	308.935	316.7	320.8
2007	323.246	322.172	320.0	319.3
2008	315.316	313.358	282.6	280.8
ENE/ JAN / 2009	146.088	147.848	146.1	147.8
ENE/ JAN / 2008	320.283	320.171	303.1	303.0
VARIACION %				
ENE/ JAN 2009/2008	-54.4	-53.8	-51.8	-51.2

(1) Deflactor: Índice de Precios al por Mayor de Estados Unidos (PPI, all commodities), base diciembre 2008=100/
Deflator: U.S. Producer Price Index (PPI, all Commodities). December 2008 = 100.

N.D. Información no disponible / Not Available

BOLSA DE METALES DE LONDRES
PRECIO PROMEDIO DEL COBRE REFINADO, NOMINAL
LONDON METAL EXCHANGE - REFINED COPPER AVERAGE PRICE, NOMINAL
(Centavos de dólar por libra. ¢US\$/lb)
PRECIO CONTADO VENDEDOR / SELLER SPOT PRICE

COBRE GRADO "A" / A GRADE COPPER

	PERIODO / PERIOD	ANUAL(1) / ANNUAL	12 MESES / 12 MONTHS
2004	130.106	-	-
2005	167.087	-	-
2006	305.295	-	-
2007	323.246		
2008	315.316		
ENE/ JAN / 2006	214.746	214.746	172.885
FEB	225.998	220.235	179.084
MAR	231.461	224.269	185.932
ABR/ APR	289.745	238.642	196.010
MAY	364.954	264.395	213.878
JUN	326.478	275.322	228.367
JUL	349.815	286.036	243.796
AGO/ AUG	349.069	294.291	259.170
SEP	344.837	299.907	273.658
OCT	340.212	304.109	286.875
NOV	318.838	305.500	297.761
DIC/ DEC	302.778	305.295	305.295
ENE/ JAN / 2007	257.171	257.171	308.626
FEB	257.479	257.318	311.115
MAR	292.680	269.474	316.775
ABR/ APR	352.281	288.430	321.365
MAY	348.457	300.551	319.996
JUN	339.100	307.027	321.022
JUL	361.691	315.208	322.168
AGO/ AUG	340.807	318.540	321.450
SEP	346.952	321.547	321.525
OCT	363.256	326.072	323.694
NOV	316.005	325.125	323.447
DIC/ DEC	298.812	323.246	323.246
ENE/ JAN / 2008	320.283	320.283	328.756
FEB	357.780	338.595	336.799
MAR	382.800	352.142	344.178
ABR/ APR	393.942	363.089	347.896
MAY	380.235	366.387	350.416
JUN	374.694	367.782	353.382
JUL	381.655	369.938	355.230
AGO/ AUG	346.304	367.125	355.783
SEP	317.100	361.332	353.118
OCT	223.426	346.441	340.406
NOV	168.600	331.176	328.855
DIC/ DEC	139.343	315.316	315.316
ENE/ JAN / 2009	146.088	146.088	301.397
PROMEDIO A:/ AVERAGE UP TO:			
ENE/Jan/ 2009	146.088	146.088	301.397
ENE/Jan/ 2008	320.283	320.283	328.756
VARIACION %/ % VARIATION			
ENE/Jan 2009/2008	-54.4	-54.4	-8.3

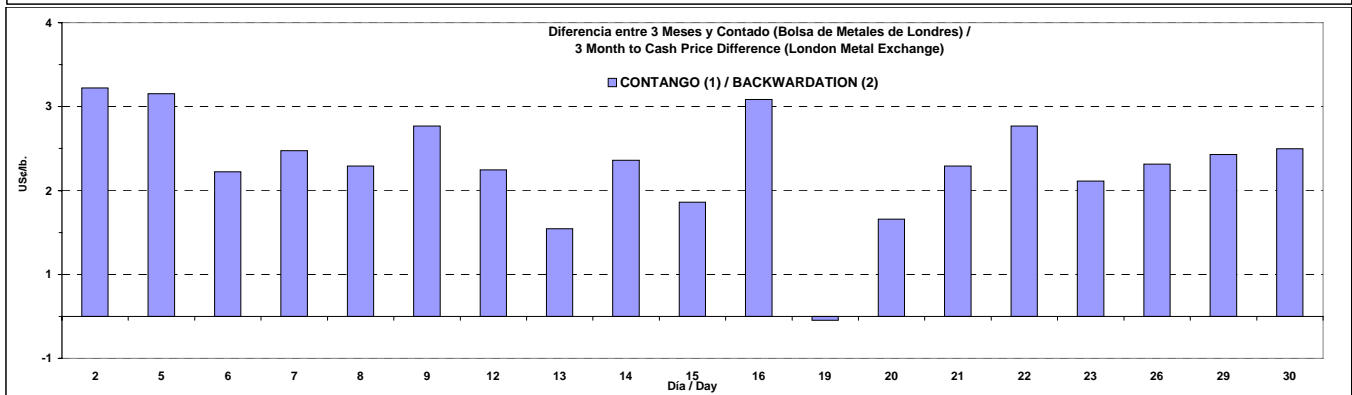
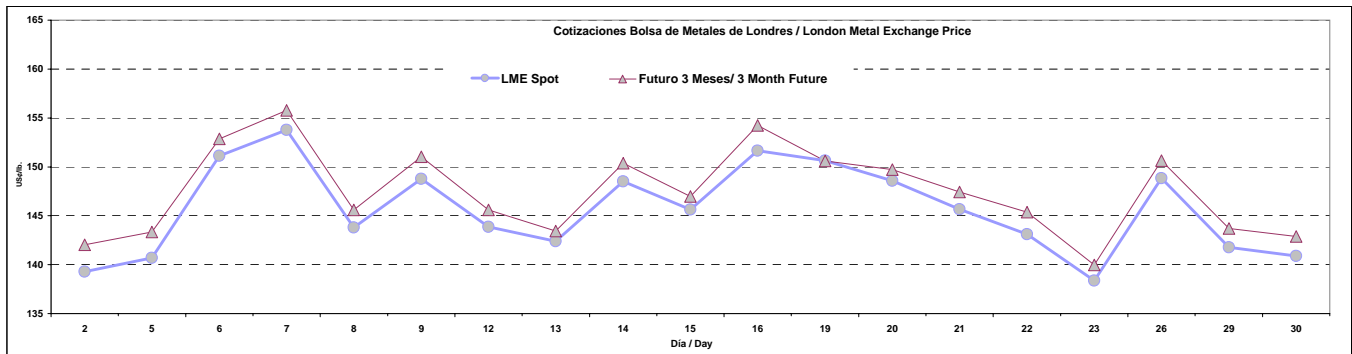
(1) Precio promedio a la fecha./ Up to date average price.
Fuente / Source: Elaborado por la Comisión Chilena del Cobre

PRECIOS DIARIOS DEL COBRE EN BOLSAS - CATODOS GRADO "A"
EXCHANGES DAILY COPPER PRICES - A GRADE CATHODES
ENERO/ JANUARY 2009

DIA DAY	BOLSA DE METALES DE LONDRES PRECIOS DIARIOS LONDON METAL EXCHANGE REFINED COPPER DAILY PRICES								COMEX NEW YORK MERCANTILE EXCHANGE			
	Dólar por tonelada métrica.(US\$/T.M. - US\$/MT)				Centavos de dólar por libra. ¢US\$/lb				Centavos de dólar por libra. ¢US\$/lb			
	CONTADO/ SPOT	FUTURO/ FUTURE (3m)	FUTURO/ FUTURE (15m)	FUTURO/ FUTURE (27m)	CONTADO/ SPOT	FUTURO/ FUTURE (3m)	FUTURO/ FUTURE (15m)	FUTURO/ FUTURE (27m)	1° Pos 1 Pos	HG 4 Pos	16° Pos HG 16 Pos	24° Pos HG 24 Pos
1	Feriado/Holiday											
2	3,071.00	3,131.00	3,220.00	3,275.00	139.298	142.020	146.057	148.552	144.40	146.75	150.10	152.10
5	3,101.50	3,160.00	3,250.00	3,310.00	140.682	143.335	147.418	150.139	144.20	146.45	150.20	152.20
6	3,332.00	3,370.00	3,470.00	3,540.00	151.137	152.861	157.397	160.572	156.60	159.00	162.20	163.80
7	3,390.50	3,434.00	3,535.00	3,605.00	153.791	155.764	160.345	163.520	149.45	151.85	155.10	156.70
8	3,170.50	3,210.00	3,310.00	3,380.00	143.812	145.603	150.139	153.314	146.30	148.70	152.30	153.90
9	3,280.00	3,330.00	3,420.00	3,475.00	148.778	151.046	155.129	157.623	154.55	156.65	159.35	160.15
12	3,171.50	3,210.00	3,305.00	3,365.00	143.857	145.603	149.912	152.634	147.50	149.50	152.50	153.30
13	3,139.00	3,162.00	3,255.00	3,325.00	142.383	143.426	147.644	150.820	153.25	155.35	159.00	160.20
14	3,274.00	3,315.00	3,410.00	3,475.00	148.506	150.366	154.675	157.623	147.30	149.45	153.50	154.70
15	3,210.50	3,240.50	3,340.00	3,410.00	145.626	146.987	151.500	154.675	143.85	145.95	149.95	151.15
16	3,343.00	3,400.00	3,495.00	3,565.00	151.636	154.221	158.531	161.706	151.35	153.25	157.10	158.30
19	3,321.00	3,320.00	3,405.00	3,475.00	150.638	150.593	154.448	157.623	Feriado/Holiday			
20	3,275.50	3,301.00	3,385.00	3,445.00	148.574	149.731	153.541	156.263	149.00	150.95	154.45	155.25
21	3,211.00	3,250.50	3,335.00	3,390.00	145.649	147.440	151.273	153.768	141.90	143.95	147.35	148.15
22	3,155.00	3,205.00	3,290.00	3,340.00	143.108	145.376	149.232	151.500	138.10	140.20	143.85	144.65
23	3,050.50	3,086.00	3,175.00	3,230.00	138.368	139.979	144.016	146.510	145.75	147.85	151.60	152.40
26	3,281.00	3,321.00	3,405.00	3,455.00	148.824	150.638	154.448	156.716	157.20	159.35	162.70	163.50
27	3,330.50	3,376.50	3,455.00	3,495.00	151.069	153.156	156.716	158.531	147.00	149.20	152.60	153.40
28	3,295.00	3,339.00	3,420.00	3,470.00	149.459	151.455	155.129	157.397	148.05	150.30	153.60	154.40
29	3,125.50	3,168.00	3,260.00	3,325.00	141.770	143.698	147.871	150.820	145.00	147.15	150.45	151.50
30	3,106.00	3,150.00	3,240.00	3,310.00	140.886	142.882	146.964	150.139	146.20	148.30	151.75	152.95
PROMEDIO / AVERAGE	3,220.69	3,260.93	3,351.43	3,412.38	146.088	147.913	152.018	154.783	147.848	150.008	153.483	154.635

FUENTE / SOURCE: Reuters

NOTA / NOTE: Comex tiene precios desde la posición 1 (mes actual) a la 24 (23 meses en adelante) / Comex prices start at 1st position (current month) and ends at 24th position (23 months ahead).
N.D. Información no disponible/ No data available, No trade /suspended



(1) Contango: Precio futuro mayor que precio contado / Future price higher than spot price
(2) Backwardation: Precio futuro menor que precio contado / Future price lower than spot price

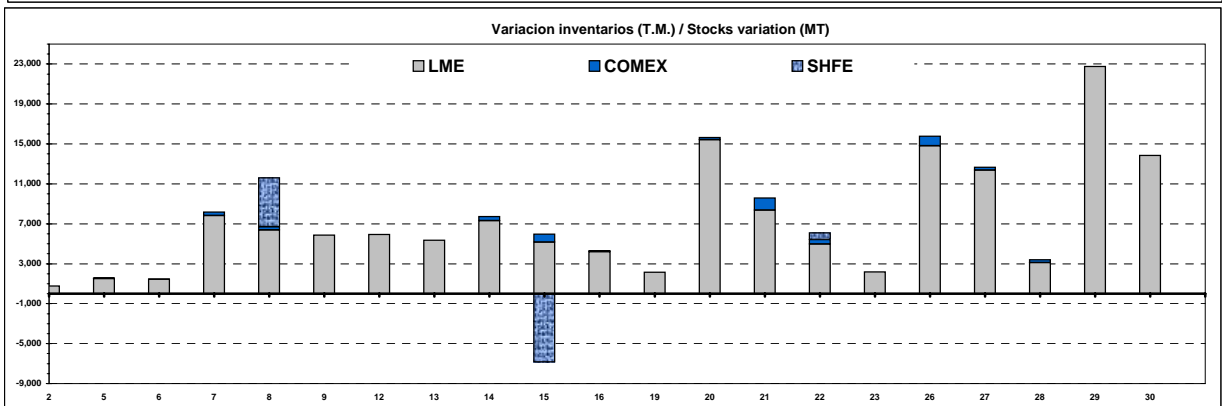
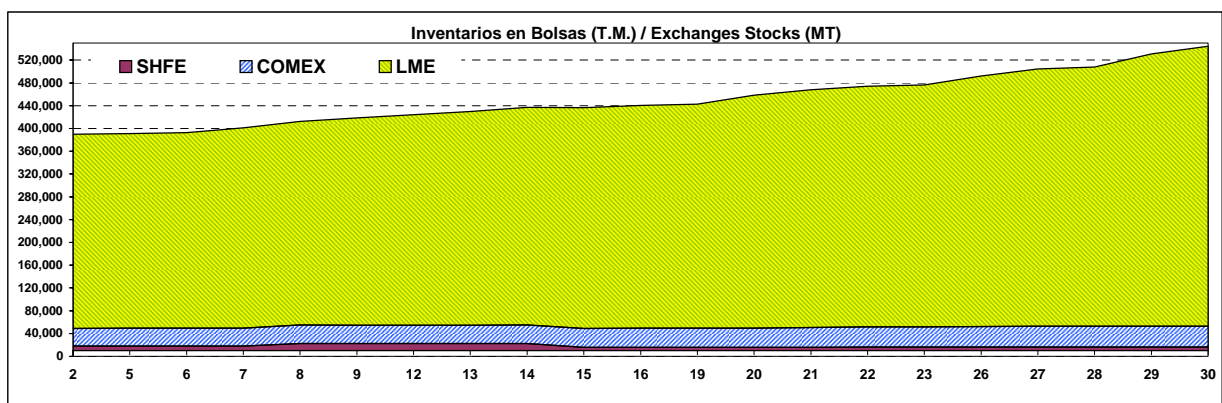
STOCKS DE COBRE EN BOLSAS - CATODOS GRADO "A"

COPPER WAREHOUSE STOCKS - A GRADE CATHODES

ENERO / JANUARY 2009

T.M. / M.T.

Stocks fin período End of period stocks	BOLSA DE METALES DE LONDRES/ LONDON METAL EXCHANGE		BOLSA DE NUEVA YORK / NEW YORK MERCANTILE EXCHANGE		BOLSA DE SHANGAI / SHANGHAI FUTURE EXCHANGE		TOTAL	VARIACION
T.M./MT	LME	Variación/ Variation	COMEX	Variación/ Variation	SHFE	Variación/ Variation	TOTAL	VARIATION
	TOTAL		TOTAL		TOTAL		TOTAL	
31.12.2007	197,450		13,816		25,597		236,863	
31.12.2008	339,775	142,325	31,311	17,495	17,822	-7,775	388,908	152,045
2	340,550	775	31,311	0	17,822	0	389,683	775
5	342,050	1,500	31,370	59	17,822	0	391,242	1,559
6	343,500	1,450	31,389	19	17,822	0	392,711	1,469
7	351,325	7,825	31,747	358	17,822	0	400,894	8,183
8	357,700	6,375	32,064	317	22,736	4,914	412,500	11,606
9	363,575	5,875	31,985	-79	22,736	0	418,296	5,796
12	369,500	5,925	31,985		22,736	0	424,221	5,925
13	374,850	5,350	32,024		22,736	0	429,610	5,389
14	382,150	7,300	32,423	438	22,736	0	437,309	19,013
15	387,325	5,175	33,214	791	15,871	-6,865	436,410	-899
16	391,525	4,200	33,312	98	15,871	0	440,708	4,298
19	393,675	2,150	33,312	0	15,871	0	442,858	2,150
20	409,100	15,425	33,530	218	15,871	0	458,501	15,643
21	417,475	8,375	34,523	1,211	15,871	0	467,869	25,011
22	422,450	4,975	34,958	435	16,567	696	473,975	6,106
23	424,625	2,175	34,958	0	16,567	0	476,150	2,175
26	439,425	14,800	35,933	975	16,567	0	491,925	15,775
27	451,800	12,375	36,228	295	16,567	0	504,595	12,670
28	454,925	3,125	36,505	277	16,567	0	507,997	3,402
29	477,675	22,750	36,505	0	16,567	0	530,747	22,750
30	491,525	13,850	36,505	0	16,567	0	544,597	13,850



Fuente / Source: Elaborado por la Comisión Chilena del Cobre

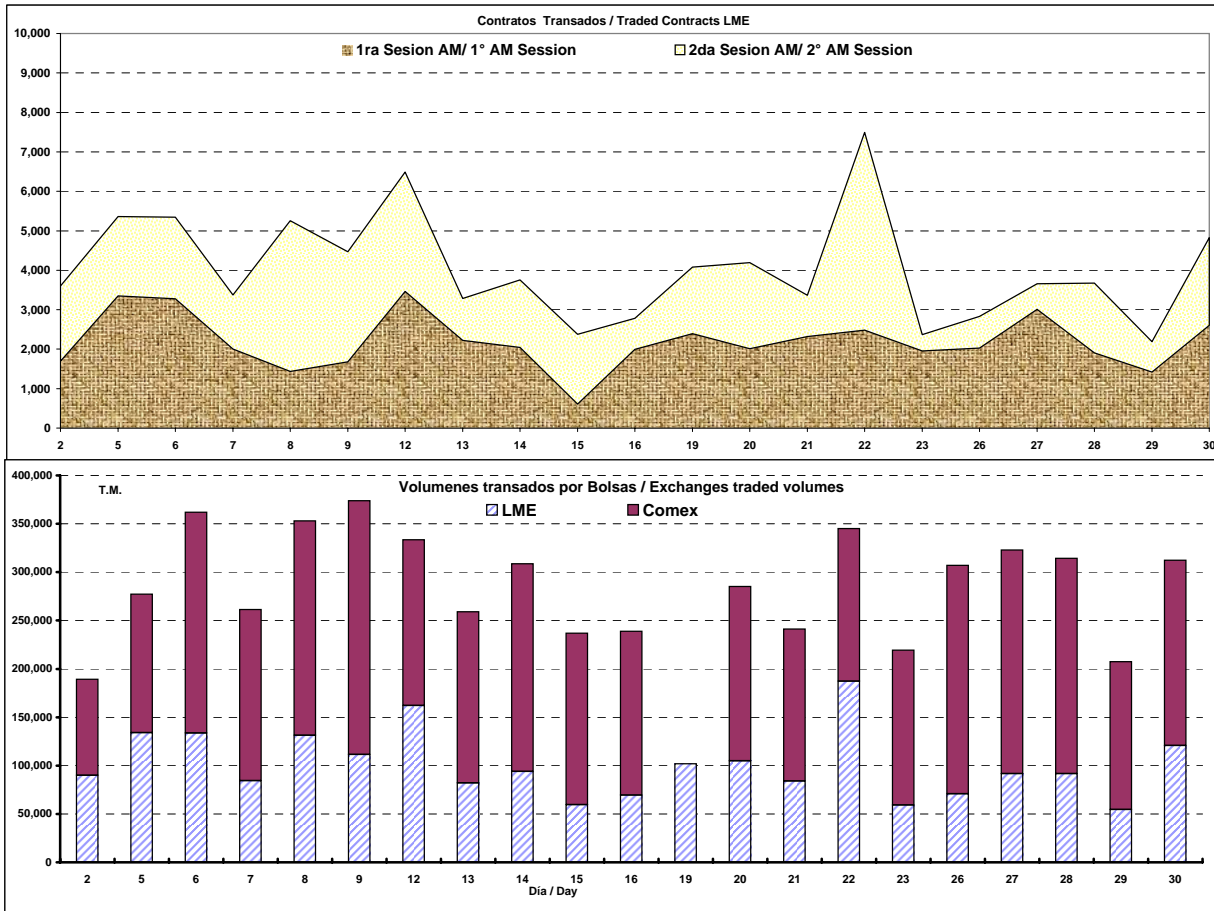
VOLUMENES DE COBRE TRANSADO EN BOLSAS - CATODOS GRADO "A"
COPPER RING VOLUME - A GRADE CATHODES
ENERO/ JANUARY 2009
T.M. / M.T.

DIA DAY	BOLSA DE METALES DE LONDRES/ LONDON METAL EXCHANGE						NEW YORK MERCANTILE EXCHANGE COMEX			
	1ra. Sesión AM/ Morning Ring Sessions			2da. Sesión AM/ Morning Ring sessions			Total contratos	TOTAL T.M.	Total contratos	TOTAL MT.
	1°	2°	Kerb	1°	2°	Kerb	Total contratos	TOTAL MT	Total contratos	TOTAL MT
2	1,551	85	60	492	890	525	3,603	90,075	8,732	99,019
5	2,587	766	-	270	647	1,090	5,360	134,000	12,631	143,233
6	2,669	605	-	529	712	826	5,341	133,525	20,153	228,531
7	1,514	450	40	20	1,020	333	3,377	84,425	15,615	177,071
8	1,290	145	-	2,308	30	1,481	5,254	131,350	19,536	221,534
9	432	725	520	214	1,772	803	4,466	111,650	23,133	262,324
12	3,270	197	-	1,540	1,131	349	6,487	162,175	15,115	171,401
13	2,035	190	-	159	343	560	3,287	82,175	15,594	176,833
14	1,566	480	-	1,440	150	120	3,756	93,900	18,940	214,776
15	470	136	-	40	882	851	2,379	59,475	15,647	177,434
16	1,626	367	-	40	410	336	2,779	69,475	14,953	169,564
19	2,022	371	-	756	280	649	4,078	101,950	Feriado/Holiday	
20	1,862	153	-	720	780	682	4,197	104,925	15,906	180,371
21	1,986	334	-	700	60	285	3,365	84,125	13,853	157,090
22	1,910	570	-	130	4,400	487	7,497	187,425	13,905	157,680
23	1,801	150	-	8	218	190	2,367	59,175	14,117	160,084
26	1,908	120	-	499	7	298	2,832	70,800	20,842	236,344
27	2,313	697	-	120	190	341	3,661	91,525	20,395	231,275
28	1,346	561	-	120	-	1,644	3,671	91,775	19,629	222,589
29	1,273	148	-	114	440	211	2,186	54,650	13,481	152,872
30	2,408	192	-	746	1,263	215	4,824	120,600	16,920	191,869

FUENTE / SOURCE: Reuters

N.D. Información no disponible.

Nota: 1 Contrato Bolsa de Metales de Londres 25 Toneladas. Comex 1 Contrato 25.000 Libras 11.34 Toneladas



Fuente / Source: Elaborado por la Comisión Chilena del Cobre

VOLUMENES E INTERESES ABIERTOS DE FUTUROS Y OPCIONES DE COBRE BOLSA DE METALES DE LONDRES

LONDON METAL EXCHANGE COPPER FUTURES & OPTION VOLUME AND OPEN INTEREST

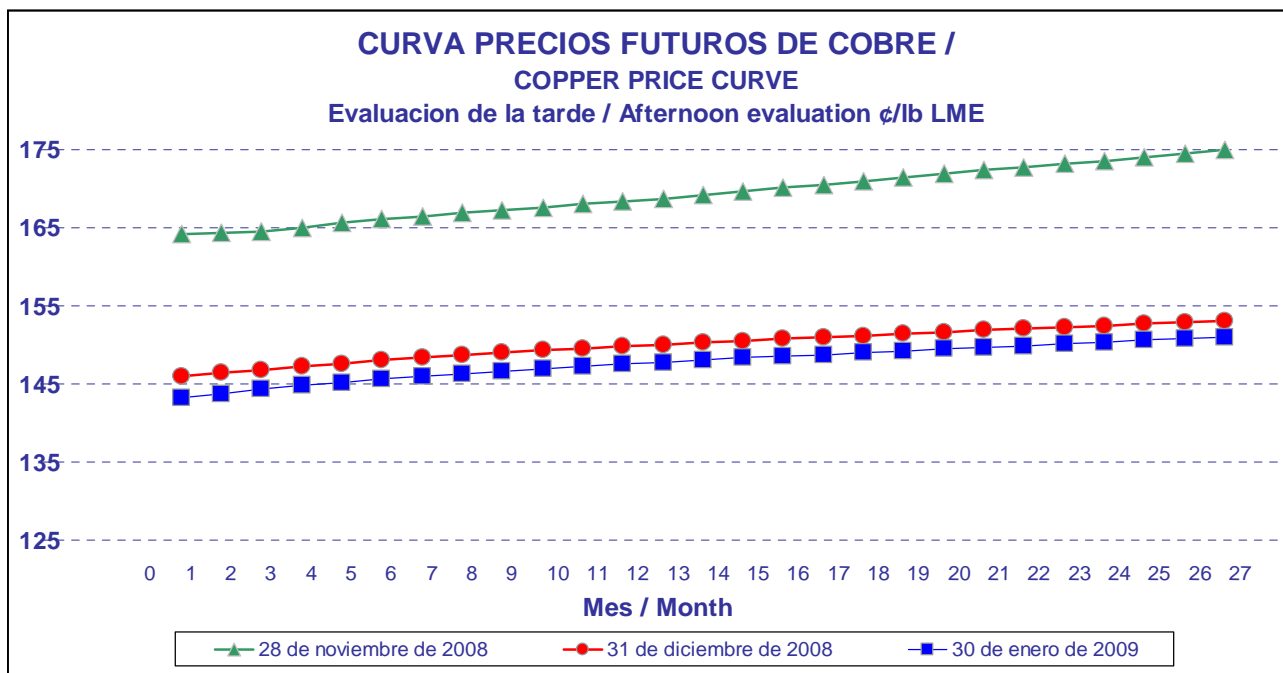
(Numero de contratos / Contract number)

ENERO / JANUARY 2009

Dia / Day	VOLUMEN / VOLUME			INTERESES ABIERTOS / OPEN INTEREST	
	Futuros / Futures	Opciones / Options	TOTAL/ Total	Futuros / Futures	Opciones / Options
02	68,992	661	69,653	241,229	123,808
05	89,912	1,760	91,672	240,424	124,170
06	127,036	2,749	129,785	241,555	124,832
07	126,792	4,138	130,930	243,471	113,143
08	100,517	8,345	108,862	245,006	105,488
09	131,048	3,829	134,877	250,715	106,196
12	122,254	2,200	124,454	257,246	106,596
13	122,167	9,309	131,476	250,120	108,807
14	100,074	1,817	101,891	249,903	109,113
15	90,986	1,155	92,141	247,701	109,503
16	77,998	2,102	80,100	250,946	110,093
19	94,345	470	94,815	246,590	110,243
20	122,733	475	123,208	244,418	110,378
21	94,669	4,837	99,506	247,188	111,861
22	110,322	3,825	114,147	252,926	113,128
23	78,211	52,960	131,171	254,276	115,194
26	306,062	5,306	311,368	253,815	115,948
27	92,890	6,372	99,262	253,067	117,139
28	87,922	2,823	90,745	250,581	118,029
29	75,068	2,126	77,194	250,577	118,602
30	94,471	1,360	95,831	249,495	117,830
TOTAL/TOTAL	2,314,469	118,619	2,433,088		

N.D. Información no disponible/ No data available, No trade /suspended

Fuente / Source: Elaborado por la Comisión Chilena del Cobre



Fuente / Source: London Metals Exchange

PRECIO PROMEDIO DEL COBRE EN ESTADOS UNIDOS, NOMINAL

(Centavos de dólar por libra. ¢US\$/lb)
COPPER AVERAGE PRICE IN USA, NOMINAL

	PRODUCTORES NORTEAMERICANOS North American Producers	COMEX COBRE GRADO "A" A Grade Copper	PRECIO CHATARRA Scrap Price
	W.B.(1)	1er.MES / First Month	Nº 2
2004	133.945	128.972	19.542
2005	173.493	168.227	17.050
2006	314.751	308.935	41.483
2007	328.002	322.172	36.908
2008	319.163	313.358	30.867
ENE/ JAN / 2006	224.000	218.258	15.250
FEB	230.905	225.079	11.750
MAR	238.235	232.409	20.200
ABR/ APR	302.679	296.853	32.750
MAY	381.687	375.861	37.600
JUN	345.474	339.648	44.250
JUL	368.147	362.321	75.000
AGO/ AUG	358.887	353.061	75.000
SEP	352.184	346.358	63.750
OCT	345.226	339.400	50.000
NOV	322.386	316.560	41.000
DIC/ DEC	307.200	301.413	31.250
ENE/ JAN / 2007	264.131	258.305	20.000
FEB	265.487	259.661	17.250
MAR	298.096	292.270	20.000
ABR/ APR	356.666	350.840	31.000
MAY	354.074	348.248	37.400
JUN	344.590	338.764	41.750
JUL	367.421	361.595	54.000
AGO/ AUG	342.609	336.783	56.000
SEP	351.442	345.616	46.250
OCT	364.713	358.887	58.000
NOV	318.802	312.924	37.500
DIC/ DEC	307.996	302.170	23.750
ENE/ JAN / 2008	326.000	320.171	25.000
FEB	364.781	358.955	31.250
MAR	386.934	381.108	38.250
ABR/ APR	399.765	393.939	33.000
MAY	383.247	377.421	38.750
JUN	374.800	368.974	36.250
JUL	381.765	375.939	41.600
AGO/ AUG	349.211	343.640	26.500
SEP	320.119	314.293	16.250
OCT	224.391	218.565	30.800
NOV	174.323	168.497	31.750
DIC/ DEC	144.624	138.798	21.000
ENE/ JAN / 2009	153.674	147.848	17.500
Ene/Jan/ 2009	153.674	147.848	17.500
Ene/Jan/ 2008	326.000	320.171	25.000
VARIACION % / % VARIATION			
Ene/Jan/ 2009-2008	-52.9	-53.8	-30.0

(1) Cotización/ Quotation Producer Delivered-Metals Week.
FUENTE/ SOURCE: Metals Week, Reuters.

PRECIOS PROMEDIOS METALES PRECIOSOS, NOMINALES

(US\$ / onza troy)

PRECIOUS METALS AVERAGE PRICES, NOMINAL

	<u>PLATA / SILVER</u>		<u>ORO / GOLD</u>		<u>PLATINO/ PLATINUM</u>	
	REINO UNIDO (1)	ESTADOS UNIDOS (2)	REINO UNIDO/ UK		ESTADOS UNIDOS (2)	REINO UNIDO (3)
	UK	USA	INICIAL / INITIAL	FINAL / LAST	USA	UK
2004	6.65	6.69	409.3	409.2	409.3	845.2
2005	7.31	7.34	444.9	444.9	444.8	896.9
2006	11.57	11.57	604.7	604.3	604.0	1,141.7
2007	13.39	13.41	696.9	696.7	696.9	1,304.8
2008	15.02	15.00	872.5	871.7	871.1	1,576.4
ENE/ JAN / 2006	9.15	9.18	549.4	549.9	549.3	1,029.0
FEB	9.53	9.52	555.5	555.0	555.0	1,041.8
MAR	10.38	10.38	557.2	557.1	557.1	1,041.1
ABR/ APR	12.61	12.64	611.9	610.7	610.4	1,101.4
MAY	13.45	13.38	676.8	675.4	674.0	1,264.9
JUN	10.80	10.77	597.9	596.1	596.1	1,188.5
JUL	11.23	11.21	633.1	633.7	634.9	1,228.8
AGO/ AUG	12.18	12.25	631.6	632.6	632.1	1,234.0
SEP	11.68	11.60	600.2	598.2	596.8	1,183.6
OCT	11.56	11.62	586.6	585.8	585.8	1,082.5
NOV	12.93	12.98	626.8	627.8	627.1	1,183.0
DIC/ DEC	13.36	13.30	629.5	629.8	629.4	1,121.5
ENE/ JAN / 2007	12.84	12.87	630.4	631.2	630.9	1,148.4
FEB	13.91	13.95	665.1	664.7	664.4	1,204.6
MAR	13.18	13.16	655.9	654.9	654.9	1,218.8
ABR/ APR	13.74	13.73	680.0	679.4	679.2	1,278.4
MAY	13.15	13.19	668.3	666.9	667.9	1,301.3
JUN	13.14	13.15	655.7	655.5	655.4	1,286.2
JUL	12.91	12.95	665.3	665.3	665.8	1,303.1
AGO/ AUG	12.36	12.33	664.5	665.4	665.2	1,264.7
SEP	12.83	12.93	710.6	712.7	714.8	1,307.7
OCT	13.67	13.72	754.5	754.6	754.6	1,410.7
NOV	14.70	14.67	808.3	806.2	805.9	1,448.7
DIC/ DEC	14.30	14.31	803.6	803.2	803.2	1,484.9
ENE/ JAN / 2008	15.96	16.06	887.8	889.6	890.5	1,585.8
FEB	17.57	17.67	924.3	922.3	923.3	1,999.7
MAR	19.51	19.22	971.1	968.4	966.3	2,046.5
ABR/ APR	17.50	17.51	911.6	909.7	909.7	1,988.4
MAY	17.05	17.05	889.1	888.7	887.6	2,054.7
JUN	16.97	17.04	889.5	889.5	889.5	2,038.2
JUL	18.03	18.06	941.2	939.8	940.2	1,904.4
AGO/ AUG	14.69	14.58	840.4	839.0	838.3	1,488.5
SEP	12.37	12.19	824.9	829.9	830.3	1,223.0
OCT	10.44	10.43	812.8	806.6	806.6	912.6
NOV	9.87	9.87	757.9	760.9	754.9	840.3
DIC/ DEC	10.29	10.32	819.9	816.1	816.1	834.8
ENE/ JAN / 2009	11.29	11.40	857.7	858.7	860.0	949.8
Ene/Jan/ 2009	11.29	11.40	857.73	858.69	859.98	949.76
Ene/Jan/ 2008	15.96	16.06	887.78	889.60	890.47	1,585.77
VARIACION % / % VARIATION						
Ene/Jan/ 2009-2008	-29.3	-29.0	-3.4	-3.5	-3.4	-40.1

(1) Cotización London Spot.

(2) Cotización Handy & Harman N.Y.

(3) Promedio Cotización London fixing P.M. / Average

FUENTE/ SOURCE: Metals Week.Reuters.

PRECIOS DIARIOS ORO: ENERO 2009

(US\$ / onza troy)

GOLD DAILY PRICES: JANUARY 2009

DIA/ DAY	REINO UNIDO/ UK (1)		COMEX	EE.UU. / USA	EE.UU / USA
	INICIAL / INITIAL	FINAL / LAST	1°Pos / 1 St Pos (US\$/oz)		(2)
1	Feriado/Holiday	Feriado/Holiday	Feriado/Holiday		Feriado/Holiday
2	869.75	874.50	878.80		874.50
3					
4					
5	860.00	853.50	857.20		853.50
6	844.00	848.25	865.40		848.25
7	864.00	848.50	841.10		848.50
8	842.50	855.75	853.90		855.75
9	854.00	847.25	854.30		847.25
10					
11					
12	848.50	827.00	820.30		827.00
13	815.50	826.50	820.10		826.50
14	827.25	821.50	808.20		821.50
15	813.00	810.00	806.70		810.00
16	824.25	833.75	839.30		833.75
17					
18					
19	842.50	833.00	Feriado/Holiday		Feriado/Holiday
20	835.00	853.25	854.60		853.25
21	860.50	849.25	849.60		849.25
22	847.75	860.00	858.20		860.00
23	873.00	875.75	895.30		875.75
24					
25					
26	906.50	910.25	908.50		910.25
27	896.00	897.50	899.20		897.50
28	891.25	895.25	888.10		895.25
29	878.50	892.25	905.10		892.25
30	918.50	919.50	927.30		919.50
31					
PROMEDIO MES/ MONTH AVG	857.726	858.690	861.560		859.975

(1) Cotización London

(2) Cotización Handy & Harman N.Y.

Fuente / Source: Reuters. Elaborado por la Comisión Chilena del Cobre

PRECIOS DIARIOS PLATA ENERO 2009

(US\$ / onza troy)

SILVER DAILY PRICES: JANUARY 2009

DIA/ DAY	REINO UNIDO/ UK (1)	COMEX EE.UU./ USA 1 Pos / 1 St Pos (US\$/oz)	Handy & Harman N.Y. (2)
1	Feriado/Holiday	Feriado/Holiday	Feriado/Holiday
2	11.0800	11.4650	11.5000
3			
4			
5	11.0700	11.2450	10.9800
6	10.8500	11.4200	11.2100
7	11.4100	11.0800	11.2150
8	10.8800	11.0720	11.0850
9	11.2200	11.2950	11.3150
10			
11			
12	11.0900	10.7250	10.9000
13	10.6200	10.6550	10.8150
14	10.7700	10.4520	10.5650
15	10.5100	10.4200	10.4500
16	10.7800	11.1950	11.1200
17			
18			
19	11.1600	Feriado/Holiday	Feriado/Holiday
20	11.3200	11.1580	11.3350
21	11.3400	11.3150	11.1850
22	11.3200	11.3570	11.4000
23	11.4600	11.9320	11.8700
24			
25			
26	12.1000	12.1020	12.1700
27	11.9100	12.1670	12.1850
28	11.9800	11.9630	12.0000
29	11.7400	12.1400	12.0900
30	12.5100	12.5600	12.5900
31			
PROMEDIO MES/ MONTH AVG	11.29143	11.38590	11.39900

(1) Cotización London Spot.

(2) Cotización Handy & Harman N.Y.

Fuente / Source: Reuters. Elaborado por la Comisión Chilena del Cobre

PRECIOS PROMEDIOS OTROS METALES, NOMINALES

(Centavos de dólar por libra. ¢US\$/lb)

OTHER METALS AVERAGE PRICES, NOMINAL

	ALUMINIO/ALUMINIUM		PLOMO/ LEAD	ZINC	ESTAÑO/ TIN	NIQUEL/NICKEL		MOLIBDENO/ MOLYBDENUM
	B.M.L./ LME HG SETTLL.	EE.UU./USA(1)	B.M.L./ LME SETTLL.	B.M.L./ LME SHG SETTLL.	EE.UU./USA(2)	B.M.L./ LME SETTLL.	EE.UU./USA(2)	OXIDO/ OXIDE (US\$/lb) EE.UU./ USA(2)
2004	77.8	84.0	40.2	47.5	409.4	627.3	634.1	16.40
2005	86.1	91.1	44.3	62.7	360.9	668.8	681.4	31.73
2006	116.6	121.4	58.5	148.6	419.5	1100.2	1098.2	24.75
2007	119.7	122.2	117.0	147.1	679.5	1688.7	1690.5	30.23
2008	116.7	120.5	94.8	85.0	864.5	957.6	987.4	28.73
ENE/ JAN / 2006	107.9	111.8	57.0	94.8	340.1	660.2	640.8	22.39
FEB	111.4	116.9	57.9	100.7	375.9	679.4	694.4	23.50
MAR	110.2	114.8	54.1	109.6	383.6	675.7	694.9	22.84
ABR/ APR	118.9	123.7	53.1	139.9	420.4	813.9	818.4	22.95
MAY	129.8	135.5	52.9	161.7	421.3	956.0	942.5	25.53
JUN	112.4	119.3	43.7	146.3	380.7	941.4	966.4	25.18
JUL	114.0	119.6	47.7	151.5	401.5	1,205.9	1,175.0	24.68
AGO/ AUG	111.6	117.0	53.3	151.8	404.7	1,394.5	1,380.8	26.84
SEP	112.2	117.0	60.9	154.4	428.9	1,366.7	1,363.4	27.14
OCT	120.4	124.1	69.5	173.4	470.3	1,483.4	1,482.2	25.60
NOV	122.6	127.2	73.7	198.8	480.0	1,456.7	1,453.5	25.54
DIC/ DEC	127.6	130.2	78.3	199.8	526.5	1,568.1	1,565.7	24.78
ENE/ JAN / 2007	127.4	129.5	75.6	171.8	531.1	1,669.7	1,617.7	25.01
FEB	128.5	129.5	80.7	150.1	606.3	1,868.1	1,830.9	25.45
MAR	125.3	129.0	86.8	148.4	649.1	2,101.3	2,123.8	27.96
ABR/ APR	127.7	130.8	90.8	161.4	656.1	2,280.1	2,313.9	28.04
MAY	126.8	129.3	95.3	173.7	665.7	2,366.8	2,373.7	31.64
JUN	121.5	123.4	110.0	163.4	663.1	1,892.3	1,849.1	32.69
JUL	124.0	126.2	139.9	160.9	692.5	1,516.2	1,528.5	31.53
AGO/ AUG	114.1	117.4	141.5	147.5	708.5	1,254.3	1,268.0	31.69
SEP	108.5	111.3	146.4	130.7	698.9	1,339.8	1,329.1	31.60
OCT	110.8	113.5	168.7	135.0	747.8	1,408.7	1,422.5	31.86
NOV	113.7	116.4	151.0	115.3	775.1	1,388.5	1,417.8	32.95
DIC/ DEC	108.0	110.7	117.8	106.7	759.8	1,179.0	1,210.5	32.38
ENE/ JAN / 2008	110.9	113.6	118.3	106.1	764.0	1,256.0	1,268.6	33.03
FEB	126.0	128.6	139.7	110.6	804.1	1,268.0	1,296.2	33.35
MAR	136.3	139.9	136.5	113.9	921.4	1,416.4	1,429.6	33.40
ABR/ APR	134.2	138.6	128.0	102.7	1,001.8	1,304.7	1,345.2	32.85
MAY	131.7	135.8	101.4	99.0	1,100.8	1,167.3	1,232.7	32.67
JUN	134.2	137.4	84.5	85.9	1,033.4	1,022.8	1,048.3	33.35
JUL	139.3	142.6	88.2	84.0	1,063.0	914.5	948.4	33.67
AGO/ AUG	125.4	129.0	87.3	78.2	945.4	858.6	878.8	33.84
SEP	114.6	119.2	84.7	78.7	862.2	807.2	854.1	32.94
OCT	96.2	101.9	67.1	59.1	680.1	550.7	569.4	26.12
NOV	84.0	88.1	58.6	52.3	657.4	485.4	510.2	10.00
DIC/ DEC	67.6	71.5	43.7	49.9	540.8	439.4	467.3	9.60
ENE/ JAN / 2009	64.1	67.6	51.4	53.9	546.5	512.9	534.6	9.33
Ene/Jan/ 2009	64.1	67.6	51.4	53.9	546.5	512.9	534.6	9.3
Ene/Jan/ 2008	110.9	113.6	118.3	106.1	764.0	1,256.0	1,268.6	33.0
VARIACION % / % VARIATION Ene/Jan/ 2009-2008	-42.2	-40.5	-56.6	-49.3	-28.5	-59.2	-57.9	-71.8

(1) Mercado / MW US Market.

(2) Comerciantes / MW Dealer.

FUENTE/ SOURCE: Metals Week, Reuters.

BOLSA DE METALES DE LONDRES
PRECIOS DIARIOS OTROS METALES: ENERO 2009
(Centavos de dólar por libra. ¢US\$/lb)
OTHER METALS DAILY PRICES LME: JANUARY 2009
¢US\$/lb.

DIA/DAY	ESTAÑO/ TIN		PLOMO/ LEAD		ZINC		ALUMINIO/ ALUMINIUM		NIQUEL/ NICKEL	
	Contado/ Spot	Futuro/ Future	Contado/ Spot	Futuro/ Future	Contado/ Spot	Futuro/ Future	Contado/ Spot	Futuro/ Future	Contado/ Spot	Futuro/ Future
1	Feriado/Holiday		Feriado/Holiday		Feriado/Holiday		Feriado/Holiday		Feriado/Holiday	
2	523.90	515.28	47.20	46.77	55.36	56.77	67.68	69.65	576.52	582.87
3										
4										
5	517.10	503.71	48.97	48.53	56.06	57.61	68.74	70.10	562.68	569.71
6	553.38	542.27	52.84	52.21	58.08	59.35	71.17	72.51	608.72	610.31
7	540.91	533.20	53.39	53.25	58.45	59.49	71.44	73.26	567.67	576.06
8	510.29	502.35	51.96	51.96	55.79	56.72	68.79	70.40	520.50	524.13
9	514.83	512.56	53.75	54.43	55.34	56.50	68.97	70.58	515.96	519.36
10										
11										
12	526.17	521.86	52.16	51.73	55.02	56.31	66.93	68.63	460.40	469.47
13	512.79	510.29	48.99	49.80	53.59	54.98	65.34	67.36	469.70	472.87
14	520.04	517.32	51.53	52.39	56.04	57.22	65.95	67.50	475.14	474.46
15	499.18	497.14	51.26	51.48	56.27	57.83	64.91	66.52	481.26	487.61
16	512.56	508.02	52.71	53.30	56.50	57.40	65.57	67.22	487.84	495.55
17										
18										
19	490.11	489.88	51.30	51.71	54.68	56.18	63.55	64.68	493.51	496.68
20	491.24	492.15	51.94	51.71	54.32	55.02	61.28	62.85	490.56	492.60
21	514.83	510.29	50.83	50.83	53.14	54.11	60.12	61.83	500.31	504.62
22	517.55	521.63	50.15	50.35	50.53	51.37	59.47	61.14	503.71	504.85
23	501.45	500.31	48.76	48.60	50.26	50.80	58.51	60.19	500.99	508.02
24										
25										
26	545.90	546.58	52.30	52.16	51.73	52.69	58.99	60.80	526.39	530.70
27	532.97	528.44	52.16	52.25	51.30	52.62	59.38	60.80	508.48	512.79
28	520.50	521.63	52.62	52.62	50.85	51.76	60.42	62.05	528.66	535.24
29	494.42	489.88	51.94	51.80	48.90	49.76	59.38	60.85	498.27	499.41
30	493.06	489.88	52.25	52.21	48.85	49.78	59.49	61.08	493.06	498.95
31										
PROMEDIO MES										
MONTH AVG	515.864	512.128	51.380	51.433	53.860	54.965	64.098	65.714	512.873	517.441

Fuente / Source: Reuters. Elaborado por la Comisión Chilena del Cobre

**TASA DE CAMBIO PROMEDIO ESTADOS UNIDOS/ EXCHANGE RATES
ESTADOS UNIDOS/ USA (Federal Reserve Bank)**

PERIODO/ PERIOD	US\$ / L	DM / US\$ (1)	EURO / US\$ (1)	YEN / US\$	CHILE
					Observado/ Observed \$/ US\$
2004	1.83247		0.74406	108.142	609.53
2005	1.81986		0.80431	110.125	559.77
2006	1.84294		0.79693	116.339	530.28
2007	2.00171		0.73087	117.719	522.47
2008	1.85227		0.68333	103.741	522.46
ENE/ JAN / 2006	1.76859		0.82660	115.473	524.48
FEB	1.74800		0.83690	117.855	525.70
MAR	1.74419		0.83200	117.275	528.77
ABR/ APR	1.76805		0.81550	117.041	517.33
MAY	1.86871		0.78300	111.719	520.79
JUN	1.84354		0.78910	114.613	542.46
JUL	1.84435		0.78780	115.754	540.62
AGO/ AUG	1.89407		0.78070	115.915	538.53
SEP	1.88389		0.78470	117.206	538.65
OCT	1.87650		0.79260	118.596	530.95
NOV	1.91252		0.77690	117.316	527.44
DIC/ DEC	1.96286		0.75740	117.302	527.58
ENE/ JAN / 2007	1.95872		0.76950	120.438	540.51
FEB	1.95895		0.76490	120.496	542.27
MAR	1.94743		0.75530	117.261	538.49
ABR/ APR	1.98789		0.74060	118.934	532.30
MAY	1.98417		0.73989	120.773	522.02
JUN	1.98673		0.74530	122.684	526.72
JUL	2.03547		0.72920	121.403	519.80
AGO/ AUG	2.01103		0.73360	116.293	522.92
SEP	2.01848		0.72070	114.995	516.91
OCT	2.04496		0.70340	115.808	501.44
NOV	2.07072		0.68120	111.161	506.95
DIC/ DEC	2.01605		0.68690	112.385	499.28
ENE/ JAN / 2008	1.97024		0.67970	107.805	480.90
FEB	1.96460		0.67850	107.021	467.22
MAR	2.00147		0.64540	100.735	442.94
ABR/ APR	1.98157		0.63440	102.659	446.43
MAY	1.96498		0.64280	104.351	470.10
JUN	1.96645		0.64280	106.906	493.61
JUL	1.98883		0.63450	106.826	502.24
AGO/ AUG	1.88651		0.66660	109.361	516.70
SEP	1.79731		0.69500	106.564	530.17
OCT	1.68716		0.74960	104.471	618.39
NOV	1.53268		0.78510	96.946	651.51
DIC/ DEC	1.48541		0.74550	91.249	649.32
ENE/ JAN / 2009	1.44621		0.75230	90.147	623.01
Ene/Jan/ 2009	1.44621		0.75230	90.14694	623.01
Ene/Jan/ 2008	1.97024		0.67970	107.80509	480.90
VARIACION % / % VARIATION					
Ene/Jan/ 2009-2008	-26.6		10.7	-16.4	29.6

FUENTE/ SOURCE: Banco Central de Chile, Reuters.

(1) Nota: A contar de enero de 2002 el Marco Alemán se reemplaza por el Euro/

Note: Since January 2002 German mark was replaced by Euro .

**ANTECEDENTES DE PRODUCCION Y
EXPORTACIONES /
PRODUCTION AND EXPORTS INFORMATION**

PRODUCCION CHILENA DE COBRE Y MOLIBDENO COMERCIALBLE
CHILEAN COPPER AND MOLYBDENUM PRODUCTION

	PRODUCCION DE COBRE / COPPER PRODUCTION(1) (Miles de T.M.de Cobre Fino) / (Thousand MT of fine copper)					MOLIBDENO / MOLYBDENUM(3) (T.M. de Fino) / (MT of fine molybdenum)		
	MINA MINE	FUNDICION SMELTER	REFINADO / REFINED COPPER			CONCENT. OXIDOS OXIDES	OXIDOS	TOTAL
			SX-EW	OTROS(2)	TOTAL			
				OTHER				
2003	4,904.2	1,542.4	1,653.1	1,248.8	2,901.9	27,975.8	5,398.0	33,373.8
2004	5,412.5	1,517.6	1,636.3	1,200.4	2,836.7	33,544.2	8,339.0	41,883.2
2005	5,320.5	1,558.1	1,584.6	1,239.4	2,824.0	39,069.7	8,971.0	48,040.7
2006	5,360.8	1,565.4	1,691.8	1,119.5	2,811.3	36,080.6	7,197.0	43,277.6
2007	5,557.0	1,514.3	1,832.1	1,104.4	2,936.5	37,668.1	7,244.0	44,912.1
ENE/ JAN / 2005	430.4	81.0	144.1	94.9	239.0	3,104.9	551.0	3,655.9
FEB	367.0	94.5	129.1	85.9	215.0	2,699.9	790.0	3,489.9
MAR	447.2	130.7	141.7	110.7	252.4	3,176.2	854.0	4,030.2
ABR/ APR	408.7	136.8	128.6	106.0	234.6	3,173.2	852.0	4,025.2
MAY	456.0	138.6	131.5	109.2	240.7	3,483.9	560.0	4,043.9
JUN	407.2	122.7	118.8	100.9	219.7	2,747.6	777.0	3,524.6
JUL	417.8	129.3	120.8	108.4	229.2	2,597.8	724.0	3,321.8
AGO/ AUG	469.5	141.3	129.7	99.8	229.5	2,811.4	829.0	3,640.4
SEP	431.9	140.7	124.2	100.1	224.3	3,783.9	559.0	4,342.9
OCT	456.1	145.2	132.6	107.0	239.6	3,833.5	771.0	4,604.5
NOV	479.1	144.7	136.3	107.3	243.6	3,406.5	842.0	4,248.5
DIC/ DEC	549.6	152.6	147.2	109.2	256.4	4,250.9	862.0	5,112.9
ENE/ JAN / 2006	415.1	101.6	137.0	92.8	229.8	2,517.2	412.0	2,929.2
FEB	388.3	94.7	124.2	86.0	210.2	2,259.1	714.0	2,973.1
MAR	441.0	121.9	142.0	94.4	236.4	3,147.3	488.0	3,635.3
ABR/ APR	443.6	133.4	131.4	93.7	225.1	2,801.6	690.0	3,491.6
MAY	459.1	140.0	139.1	95.9	235.0	3,366.8	501.0	3,867.8
JUN	447.9	134.4	135.8	91.2	227.0	2,706.5	668.0	3,374.5
JUL	459.8	129.9	144.9	95.4	240.3	2,666.1	656.0	3,322.1
AGO/ AUG	411.7	136.2	135.9	93.8	229.7	3,274.4	299.0	3,573.4
SEP	392.5	134.6	136.8	90.8	227.6	3,306.7	418.0	3,724.7
OCT	490.5	146.2	153.0	95.7	248.7	3,536.6	643.0	4,179.6
NOV	479.0	135.7	148.3	90.2	238.5	3,277.4	802.0	4,079.4
DIC/ DEC	532.3	156.8	163.4	99.6	263.0	3,220.9	906.0	4,126.9
ENE/ JAN / 2007	445.2	113.0	162.6	93.9	256.5	2,855.1	261.0	3,116.1
FEB	388.8	90.8	148.1	82.2	230.3	2,025.1	702.0	2,727.1
MAR	498.1	148.8	153.5	107.0	260.5	3,127.0	790.0	3,917.0
ABR/ APR	454.9	132.5	158.4	98.3	256.7	3,464.5	644.0	4,108.5
MAY	476.1	134.7	159.6	100.4	260.0	3,008.3	612.0	3,620.3
JUN	457.9	129.5	146.5	93.9	240.4	3,247.1	547.0	3,794.1
JUL	451.8	93.5	146.8	72.5	219.3	3,196.1	780.0	3,976.1
AGO/ AUG	427.5	116.3	142.5	72.8	215.3	3,055.7	638.0	3,693.7
SEP	474.5	149.4	150.4	103.2	253.6	3,694.9	427.0	4,121.9
OCT	482.0	140.5	155.6	93.1	248.7	3,496.8	599.0	4,095.8
NOV	469.0	125.1	145.9	90.1	236.0	2,868.4	481.0	3,349.4
DIC/ DEC	531.2	140.2	162.2	97.0	259.2	3,629.1	763.0	4,392.1
ENE/ JAN / 2008 (P)	437.0	101.7	160.7	81.2	241.9	3,443.7	87.0	3,530.7
FEB	419.4	117.9	148.2	88.7	236.9	2,096.5	744.0	2,840.5
MAR	453.2	118.5	157.1	89.0	246.1	2,492.2	908.0	3,400.2
ABR/ APR	430.0	97.4	157.5	77.5	235.0	1,671.7	730.0	2,401.7
MAY	466.7	113.6	168.7	92.0	260.7	1,730.7	30.0	1,760.7
JUN	473.2	114.9	163.8	93.7	257.5	1,987.5	769.0	2,756.5
JUL	430.9	115.7	157.7	99.1	256.8	2,352.2	618.0	2,970.2
AGO/ AUG	422.9	110.3	163.8	95.5	259.3	2,112.5	383.0	2,495.5
SEP	423.6	108.7	160.8	89.1	249.9	2,165.1	304.0	2,469.1
OCT	453.8	121.6	171.6	101.5	273.1	2,575.3	299.0	2,874.3
NOV	436.3	112.0	174.9	84.0	258.9	2,380.9	167.0	2,547.9
DIC/ DEC	483.1	136.9	188.7	95.3	284.0	3,016.2	623.0	3,639.2
ENE-DIC/ JAN-DEC / 2008 (P)	5,330.1	1,369.2	1,973.5	1,086.6	3,060.1	28,024.5	5,662.0	33,686.5
ENE-DIC/ JAN-DEC / 2007 (P)	5,557.0	1,514.3	1,832.1	1,104.4	2,936.5	37,668.1	7,244.0	44,912.1
VARIACION % / % VARIATION								
ENE-DIC/ JAN-DEC / 2008-2007	-4.1	-9.6	7.7	-1.6	4.2	-25.6	-21.8	-25.0

(P) Cifras provisionarias./ Provisional figures

(1) A contar del Boletín Agosto 2002, la Producción de Cobre se presenta como: Mina, Fundición y Refinería, de acuerdo a la clasificación usada internacionalmente/ Since 2002 August Bulletin, Copper Production is shown as: Mine, Smelter and refinery, according to the international classification.

(2) Incluye cobre electrorrefinado y cobre refinado a fuego/ Includes electro-refined and fire refined copper.

(3) Corresponde a la producción en las plantas de Codelco-Chile, de Disputada de las Condes (A contar de Agosto de 1994) y de Pelambres (A contar de Enero de 2000). / Corresponds to the production of: Codelco-Chile, Disputada de Las Condes (since August 1994), and Pelambres (since January 2000).

FUENTE/ SOURCE: COMISION CHILENA DEL COBRE.

PRODUCCION CHILENA DE COBRE DE MINA COMERCIAL POR EMPRESA
CHILEAN COPPER MINE PRODUCTION BY COMPANY

(Miles de T.M. de cobre fino) / (Thousand metric tons of fine copper)

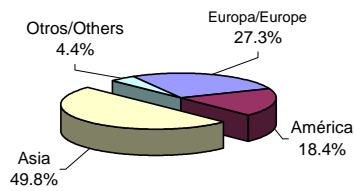
	CODELCO					Anglo American					Anglo American		Cerro	El	Quebrada	Lomas				TOTAL CHILE					
	División Codelco	División Norte	División Salvador	División Andina	División El Teniente	TOTAL CODELCO	Escondida	Collahuasi	Pelambres	Los Pelambres	Anglo American Sur	Anglo American El Abra	Anglo American Candelaria	Norte	Zaldívar	Colorado	Tesoro	Blanca	Bayas		Michilla	Spence	Gaby	Otros	
2003	907.2	80.1	235.8	339.4	1,562.5	994.7	394.7	337.8	277.9	226.6	212.7	147.1	150.5	131.5	92.4	80.1	60.4	52.7	-	-	-	-	182.6	4,904.2	
2004	982.8	74.9	239.9	435.6	1,733.2	1,195.1	481.0	362.6	300.6	218.0	200.0	155.0	147.6	119.5	97.8	76.3	62.0	50.0	-	-	-	-	213.8	5,412.5	
2005	964.9	77.5	248.2	437.4	1,728.0	1,271.5	427.0	333.8	293.7	210.6	162.7	149.7	123.3	90.4	98.1	81.0	63.2	46.4	-	-	-	-	241.1	5,320.5	
2006	940.6	80.6	236.4	418.3	1,675.9	1,255.6	440.0	335.2	294.8	218.6	169.6	152.1	146.3	115.5	94.0	82.4	64.3	47.3	4.3	-	-	-	264.9	5,360.8	
2007	896.3	63.9	218.4	404.7	1,583.3	1,483.9	452.0	300.1	302.1	166.0	181.0	151.6	142.9	98.7	93.0	82.9	61.5	45.1	128.1	-	-	-	284.8	5,557.0	
ENE/ JAN / 2006	51.0	6.0	21.4	27.8	106.2	113.7	37.6	25.4	22.0	18.3	18.3	12.4	10.7	8.8	7.4	7.1	5.7	3.9	-	-	-	-	17.6	415.1	
FEB	60.6	6.9	16.8	26.7	111.0	100.0	29.9	23.8	21.6	17.2	14.8	10.6	10.7	9.1	6.2	5.7	4.2	3.7	-	-	-	-	19.8	388.3	
MAR	78.2	4.4	20.0	30.0	132.6	115.4	26.2	27.4	24.7	19.5	13.1	12.9	12.4	10.2	7.2	7.0	5.7	4.5	-	-	-	-	22.2	441.0	
ABR/ APR	82.5	4.6	19.1	35.4	141.6	106.6	40.5	24.4	22.5	18.4	12.4	11.4	12.3	10.0	6.7	6.6	5.5	4.0	-	-	-	-	20.7	443.6	
MAY	86.7	8.2	21.5	40.4	156.8	117.7	36.3	9.1	23.0	19.2	14.6	12.2	12.4	10.1	7.1	7.0	5.6	3.9	-	-	-	-	24.1	459.1	
JUN	86.8	8.0	20.1	35.6	150.5	93.1	36.1	36.3	21.8	18.3	15.4	12.2	12.4	9.9	8.0	6.8	5.4	3.8	-	-	-	-	17.9	447.9	
JUL	70.3	8.2	19.1	37.4	135.0	104.8	48.5	32.1	22.2	18.0	15.6	13.3	12.2	10.0	8.3	7.2	5.2	4.0	-	-	-	-	23.4	459.8	
AGO/ AUG	73.5	7.1	20.3	33.1	134.0	64.3	44.1	28.8	26.4	18.6	12.4	12.5	12.2	10.1	9.0	7.1	5.0	3.9	-	-	-	-	23.3	411.7	
SEP	21.4	6.7	18.9	37.3	84.3	94.4	41.8	31.0	27.6	18.9	13.3	13.2	12.1	9.9	8.5	6.8	5.0	3.8	-	-	-	-	21.9	392.5	
OCT	106.0	6.6	19.9	35.2	167.7	117.2	39.2	26.0	26.2	18.0	12.3	13.4	12.9	9.7	8.7	7.0	5.5	3.8	-	-	-	-	22.9	490.5	
NOV	105.8	7.0	19.4	37.1	169.3	109.1	27.3	32.3	26.2	16.1	13.2	14.0	12.8	8.0	7.9	7.0	5.8	3.9	-	-	-	-	26.1	479.0	
DIC/ DEC	117.8	6.9	19.9	42.3	186.9	119.3	32.5	38.6	30.6	18.1	14.2	14.0	13.2	9.7	9.0	7.1	5.7	4.1	4.3	-	-	-	25.0	532.3	
ENE/ JAN / 2007	74.2	6.1	19.1	23.1	122.5	123.8	24.1	27.4	24.4	15.0	12.7	13.2	12.6	10.4	8.3	7.0	5.6	3.8	10.2	-	-	-	24.2	445.2	
FEB	48.0	5.8	18.1	28.8	100.7	112.4	19.8	22.6	22.7	13.6	12.2	12.3	11.2	8.5	7.5	6.4	5.1	3.9	9.6	-	-	-	20.3	388.8	
MAR	69.8	6.2	20.2	41.7	137.9	150.4	33.0	23.1	26.3	14.3	14.2	12.9	12.6	9.2	7.8	7.3	5.8	3.9	13.8	-	-	-	25.6	498.1	
ABR/ APR	75.9	6.6	19.2	37.7	139.4	117.1	35.8	23.2	22.6	13.1	12.8	12.4	12.3	7.1	8.0	7.0	5.5	3.8	12.0	-	-	-	22.8	454.9	
MAY	73.4	6.8	18.0	37.6	135.8	130.3	38.1	27.1	26.3	13.7	13.2	12.8	11.6	6.8	7.4	7.1	5.4	4.2	13.2	-	-	-	23.1	476.1	
JUN	75.3	2.0	17.8	32.5	127.6	124.7	39.2	23.2	24.9	13.0	16.4	11.7	11.2	6.4	7.8	6.7	5.2	3.8	12.4	-	-	-	23.7	457.9	
JUL	72.0	1.1	15.1	27.0	115.2	129.7	41.5	25.6	24.8	11.2	14.3	12.4	12.4	8.2	7.8	6.5	5.1	3.8	9.4	-	-	-	23.9	451.8	
AGO/ AUG	68.4	3.2	16.8	25.1	113.5	108.2	44.8	19.7	24.8	13.9	16.4	12.4	12.5	7.3	7.3	6.7	4.8	4.1	7.2	-	-	-	23.9	427.5	
SEP	84.2	7.3	19.0	38.1	148.6	115.8	43.5	23.6	26.4	14.9	16.1	12.8	11.7	7.6	7.5	6.9	4.8	3.6	7.3	-	-	-	23.4	474.5	
OCT	75.0	7.3	17.7	38.8	138.8	120.9	43.0	26.1	26.4	13.8	19.0	14.0	12.1	9.0	7.7	7.2	5.2	3.6	8.1	-	-	-	27.1	482.0	
NOV	86.1	5.1	18.6	33.5	143.3	108.3	42.0	26.8	26.2	13.9	18.5	12.6	11.3	9.1	7.9	6.9	4.5	2.4	11.2	-	-	-	24.1	469.0	
DIC/ DEC	94.0	6.4	18.8	40.8	160.0	142.3	47.2	31.7	26.3	15.6	15.2	12.1	11.4	9.1	8.0	7.2	4.5	4.2	13.7	-	-	-	22.7	531.2	
ENE/ JAN / 2008 (P)	55.8	4.1	20.1	31.3	111.3	116.1	41.5	23.6	23.6	13.3	11.1	12.6	11.4	9.6	8.4	7.2	4.9	4.0	14.7	-	-	-	23.7	437.0	
FEB	62.8	5.7	17.5	32.1	118.1	101.0	32.5	28.3	24.3	12.9	12.7	11.9	10.2	9.1	7.2	6.5	4.4	3.6	12.5	-	-	-	24.2	419.4	
MAR	65.5	4.2	18.2	30.0	117.9	116.6	36.1	30.1	24.8	13.2	14.5	12.7	11.5	10.0	8.4	7.1	4.8	3.9	14.4	-	-	-	27.2	453.2	
ABR/ APR	66.0	2.7	10.2	19.6	98.5	113.6	42.6	26.4	25.7	13.7	11.1	12.5	11.0	8.5	7.7	7.1	4.6	3.8	14.8	-	-	-	28.4	430.0	
MAY	70.6	3.0	19.1	24.5	117.2	131.5	35.8	29.1	22.9	14.0	12.3	12.8	10.2	10.1	7.7	7.4	5.0	3.9	15.0	0.7	-	-	31.1	466.7	
JUN	60.0	5.2	17.5	29.4	112.1	145.4	35.3	32.2	24.1	14.5	14.0	11.5	9.8	8.7	7.3	7.1	4.6	3.9	13.2	5.6	-	-	23.9	473.2	
JUL	56.0	5.0	19.2	36.4	116.6	91.2	37.0	31.1	22.2	13.7	17.9	11.9	8.4	7.3	7.8	7.0	4.9	4.2	12.0	7.5	-	-	30.2	430.9	
AGO/ AUG	56.2	3.5	17.3	33.2	110.2	88.0	36.1	29.9	21.3	13.8	19.0	12.9	10.2	7.1	7.3	7.3	4.8	4.1	12.1	9.2	-	-	29.6	422.9	
SEP	58.7	2.7	20.2	34.4	116.0	92.6	33.7	32.1	20.0	14.4	13.7	12.3	10.5	7.5	6.4	7.0	4.8	4.0	11.6	9.6	-	-	27.4	423.6	
OCT	63.9	3.5	19.5	35.5	122.4	84.5	42.3	32.3	26.2	13.8	16.6	12.8	13.0	8.5	6.5	7.3	5.1	4.2	13.9	11.9	-	-	32.5	453.8	
NOV	61.1	0.5	20.3	33.6	115.5	83.3	44.7	26.2	23.5	13.6	16.3	12.5	13.2	8.5	7.7	7.1	4.8	4.0	15.0	12.7	-	-	27.7	436.3	
DIC/ DEC	78.7	2.6	20.4	41.2	142.9	90.2	46.8	29.9	24.9	14.9	14.3	12.5	14.1	9.3	8.4	7.3	6.5	4.1	15.6	13.3	-	-	28.1	483.1	
ENE-DIC/ JAN-DEC / 2008 (P)	755.3	42.7	219.5	381.2	1,398.7	1,254.0	464.4	351.2	283.5	165.8	173.5	148.9	133.5	104.2	90.8	85.4	59.2	47.7	164.8	70.5	-	-	334.0	5,330.1	
ENE-DIC/ JAN-DEC / 2007	896.3	63.9	218.4	404.7	1,583.3	1,483.9	452.0	300.1	302.1	166.0	181.0	151.6	142.9	98.7	93.0	82.9	61.5	45.1	128.1	0.0	-	-	284.8	5,557.0	
VARIACION % / % VARIATION																									
ENE-DIC/ JAN-DEC / 2008-2007	-15.7	-33.2	0.5	-5.8	-11.7	-15.5	2.7	17.0	-6.2	-0.1	-4.1	-1.8	-6.6	5.6	-2.4	3.0	-3.7	5.8	28.6	-	-	-	17.3	-4.1	

(P) Cifras provisionarias / Provisional figures

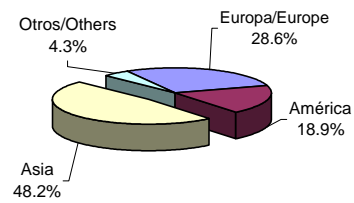
FUENTE / SOURCE: COMISION CHILENA DEL COBRE.

Evolución Exportaciones por Destinos y Productos Exports Evolution by Destination and Type of Product

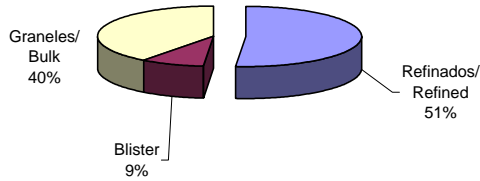
Participación Relativa Embarques de Cobre y Subproductos año 2007
Copper and by-products shipments relative share year 2007



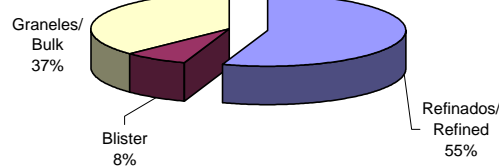
Participación Relativa Embarques de Cobre y Subproductos año 2008
Copper and by-products shipments relative share year 2008



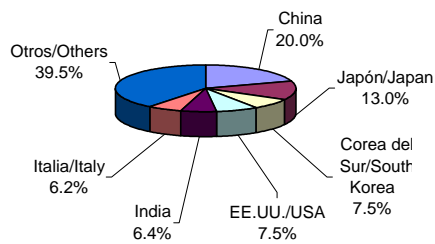
Participación de Productos en las Exportaciones de Cobre año 2007
Share of Products in Copper Exports year 2007



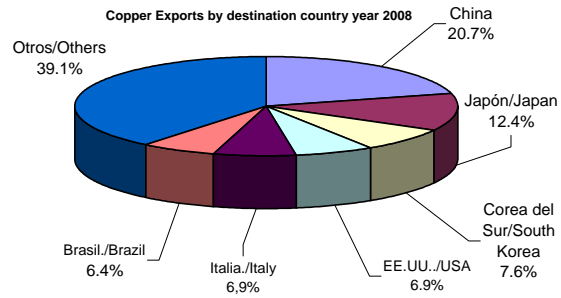
Participación de Productos en las Exportaciones de Cobre año 2008
Share of Products in Copper Exports year 2008



Países de destino de las Exportaciones de Cobre año 2007
Copper Exports by destination country year 2007



Países de destino de las Exportaciones de Cobre año 2008
Copper Exports by destination country year 2008



**VALORES DE LOS EMBARQUES DE EXPORTACION
DE COBRE Y SUBPRODUCTOS**
(FOB líquido de retorno en millones de dólares)
COPPER AND BY-PRODUCTS EXPORT SHIPMENTS VALUE (USD millions FOB)

	COBRE(1)	CONCENTRADOS MOLIBDENITA	OTROS SUBPRODUCTOS (2)	TOTAL
	COPPER(1)	MOLYBDENITE CONCENTRATES	OTHER BY-PRODUCTS (2)	
2003	7,553.0	67.2	455.4	8,075.6
2004	14,530.0	457.1	1,102.8	16,089.9
2005	17,762.6	1,101.1	2,184.4	21,048.1
2006	33,350.6	875.0	1,927.2	36,152.8
2007	37,913.2	1,390.0	2,267.8	41,571.0
ENE/ JAN / 2005	1,225.0	65.6	158.5	1,449.1
FEB	1,013.6	69.8	138.7	1,222.1
MAR	1,665.1	112.0	193.8	1,970.9
ABR/ APR	1,372.9	133.2	195.5	1,701.6
MAY	1,242.5	86.6	186.8	1,515.9
JUN	1,585.3	121.7	225.0	1,932.0
JUL	1,384.3	148.6	199.8	1,732.7
AGO/ AUG	1,572.3	79.0	181.4	1,832.7
SEP	1,576.4	46.2	167.4	1,790.0
OCT	1,538.2	78.5	182.0	1,798.7
NOV	1,798.4	78.5	189.6	2,066.5
DIC/ DEC	1,788.6	81.4	165.9	2,035.9
ENE/ JAN / 2006	1,899.3	71.8	179.1	2,150.2
FEB	1,933.7	31.6	110.0	2,075.3
MAR	3,342.3	128.9	204.3	3,675.5
ABR/ APR	2,277.3	70.7	132.4	2,480.4
MAY	3,241.0	45.3	183.4	3,469.7
JUN	2,906.2	70.7	129.0	3,105.9
JUL	3,353.7	72.4	159.5	3,585.6
AGO/ AUG	2,912.6	109.0	183.5	3,205.1
SEP	3,196.1	48.4	167.8	3,412.3
OCT	2,959.6	105.6	150.0	3,215.2
NOV	2,876.8	35.6	180.9	3,093.3
DIC/ DEC	2,452.0	85.0	147.3	2,684.3
ENE/ JAN / 2007	3,352.9	117.5	151.2	3,621.6
FEB	2,454.1	134.2	124.7	2,713.0
MAR	2,855.5	298.8	150.3	3,304.5
ABR/ APR	3,188.3	102.8	169.5	3,460.6
MAY	4,122.9	117.1	178.3	4,418.3
JUN	2,940.2	114.9	210.9	3,266.0
JUL	3,522.4	100.9	208.5	3,831.8
AGO/ AUG	2,677.8	107.8	197.9	2,983.5
SEP	3,095.7	62.3	192.5	3,350.5
OCT	3,955.5	56.4	205.8	4,217.7
NOV	3,173.7	102.1	251.3	3,527.1
DIC/ DEC	2,574.3	75.1	227.1	2,876.5
ENE/ JAN / 2008	3,465.2	60.8	222.0	3,748.0
FEB	2,952.5	50.6	212.2	3,215.2
MAR	4,092.1	69.5	263.1	4,424.8
ABR/ APR	3,625.1	46.4	234.9	3,906.5
MAY	2,846.8	38.8	184.0	3,069.6
JUN	3,444.5	41.4	295.2	3,781.1
JUL	3,953.0	65.0	255.8	4,273.8
AGO/ AUG	3,338.3	30.4	262.8	3,631.6
SEP	2,383.6	26.0	232.4	2,642.0
OCT	3,006.2	25.4	222.9	3,254.5
NOV	2,126.5	24.4	142.3	2,293.2
DIC/ DEC	1,316.2	11.9	158.6	1,486.7
ENE-DIC/ JAN-DEC / 2008	36,550.2	490.7	2,686.2	39,727.1
ENE-DIC/ JAN-DEC / 2007	37,913.2	1,390.0	2,267.8	41,571.0
VARIACION % / % VARIATION				
ENE-DIC/ JAN-DEC 2008/2007	-3.6	-64.7	18.4	-4.4

Nota: Las cifras corresponden a la fecha de emisión del Documento Unico de Salida (DUS).

Los valores del DUS son provisionarios (para las exportaciones bajo condición), mientras no se reemplacen por los valores definitivos de los Informes de Variación de Valor(IVV).

Note: Figures correspond to the date indicated in the the Export Clearance (DUS).

Values of Export Clearance (DUS) are provisional (for exports under condition), until they are replaced by the definitive values in the Value Variation Reports (VVR).

(1) No incluye el valor del cobre contenido en los embarques de concentrados de minerales de oro (Cía. Minera El Indio), por estar incorporado en la glosa de exportaciones de oro que informa el Banco Central de Chile./ Does not include value of copper content in gold concentrates shipments (Cia. Minera El Indio), as they are included in the gold exports gloss informed by the Central Bank of Chile.

(2) Incluye: Barros Anódicos, Metal Doré, Plata, Selenio, Oxido de Molibdeno y otros./ Includes: Anod slimes, dore, silver, selenium, molybdenum oxide and others.

(a) Valor inferior a 50 mil dólares. / Value below 50 thousand dollars.

FUENTE / SOURCE: COMISION CHILENA DEL COBRE.

**EMBARQUES FISICOS DE EXPORTACION DE COBRE Y
CONCENTRADOS DE MOLIBDENITA
COPPER AND MOLIBDENYTE CONCENTRATES EXPORT QUANTITY SHIPMENTS**

	COBRE (Miles de T.M. de Cobre Fino)/COPPER (thousand MT of fine copper)				C.MOLIBDENITA
	REFINADOS(1)	BLISTER	GRANELES(2)	TOTAL	(T.M. de Fino)
	REFINED	BLISTER	BULK	TOTAL	MOLYBDENYTE C. (MT of fine)
2003	2,614.1	275.9	1,797.5	4,687.5	6,997.8
2004	2,953.9	366.1	2,165.6	5,485.6	15,276.2
2005	2,799.3	347.3	2,190.4	5,337.0	18,129.9
2006	2,605.8	457.1	2,171.1	5,234.0	19,793.1
2007	2,909.7	505.5	2,258.1	5,673.4	22,961.7
ENE/ JAN / 2005	257.9	9.3	144.3	411.5	1,117.4
FEB	172.9	20.2	140.0	333.1	1,177.5
MAR	298.3	6.7	256.8	561.8	2,255.8
ABR/ APR	235.7	39.6	156.8	432.1	1,930.4
MAY	227.4	28.6	140.7	396.7	1,315.7
JUN	257.4	42.6	203.7	503.7	1,848.4
JUL	234.6	16.0	162.6	413.2	2,234.2
AGO/ AUG	216.0	42.0	216.6	474.6	1,317.1
SEP	231.8	43.6	170.4	445.8	814.8
OCT	207.7	26.7	197.7	432.1	1,268.0
NOV	242.9	43.2	189.8	475.9	1,345.4
DIC/ DEC	216.7	28.8	211.0	456.5	1,505.2
ENE/ JAN / 2006	189.2	29.4	170.9	389.5	1,301.8
FEB	233.7	35.1	120.2	389.0	873.2
MAR	300.5	34.4	259.8	594.7	4,242.6
ABR/ APR	178.6	31.4	161.4	371.4	1,455.6
MAY	260.0	40.5	185.1	485.6	962.6
JUN	220.5	31.4	162.2	414.1	1,422.3
JUL	217.1	44.0	231.2	492.3	1,376.7
AGO/ AUG	204.8	61.3	144.0	410.1	2,582.6
SEP	234.2	39.1	177.8	451.1	1,171.4
OCT	197.5	40.5	194.0	432.0	1,970.1
NOV	188.2	37.9	200.5	426.6	698.7
DIC/ DEC	181.5	32.1	164.0	377.6	1,735.5
ENE/ JAN / 2007	317.3	69.9	173.5	560.7	2,322.0
FEB	210.6	40.2	164.4	415.2	2,195.4
MAR	229.0	37.2	199.7	465.9	4,582.7
ABR/ APR	265.7	39.6	170.8	476.1	1,722.0
MAY	362.5	40.5	194.4	597.4	1,972.4
JUN	196.1	35.2	187.6	418.9	1,907.7
JUL	255.8	23.0	216.3	495.1	1,484.1
AGO/ AUG	204.4	38.6	140.1	383.1	1,779.4
SEP	200.2	25.5	232.7	458.5	1,026.4
OCT	267.0	65.8	234.2	567.1	924.4
NOV	226.2	38.0	180.8	445.0	1,822.6
DIC/ DEC	175.0	51.8	163.4	390.2	1,222.7
ENE/ JAN / 2008	246.0	62.0	205.4	513.4	881.8
FEB	261.0	32.4	113.5	406.9	784.6
MAR	255.6	37.9	255.8	549.3	1,121.4
ABR/ APR	236.4	29.4	198.7	464.4	706.6
MAY	213.9	35.0	106.6	355.5	569.9
JUN	232.0	35.5	182.7	450.2	655.7
JUL	268.7	12.7	243.4	524.8	943.3
AGO/ AUG	259.9	42.0	146.3	448.1	454.2
SEP	198.9	14.7	133.8	347.4	442.3
OCT	300.0	35.2	160.9	496.1	394.1
NOV	254.1	43.0	178.6	475.7	434.0
DIC/ DEC	256.8	28.0	88.7	373.4	581.4
ENE-DIC/ JAN-DEC / 2008	2,983.1	407.7	2,014.4	5,405.3	7,969.3
ENE-DIC/ JAN-DEC / 2007	2,909.7	505.5	2,258.1	5,673.4	22,961.7
VARIACION % / % VARIATION					
ENE-DIC/ JAN-DEC 2008/2007	2.5	-19.3	-10.8	-4.7	-65.3

Nota: Las cifras corresponden a la fecha de emisión del Documento Unico de Salida (DUS).

Los valores del DUS son provisionales (para las exportaciones bajo condición), mientras no se reemplacen por los valores definitivos de los Informes de Variación de Valor (VV).

Note: Figures correspond to the date indicated in the the Export Clearance (DUS).

Values of Export Clearance (DUS) are provisional (for exports under condition), until they are replaced by the definitive values in the Value Variation Reports (VVR).

(1) Incluye cátodos, formas especiales y refinado a fuego./ Includes cathodes, special forms and fire refined.

(2) Incluye cementos, concentrados y cobre secundario./ Includes cements, concentrates and secondary copper.

FUENTE / SOURCE: COMISION CHILENA DEL COBRE.

**EMBARQUES FISICOS DE EXPORTACION DE COBRE
POR EXPORTADOR**
(Miles de T.M. de Cobre Fino)
COPPER EXPORT SHIPMENTS QUANTITY BY EXPORTER (Thousand MT of fine copper)

	2006	2007	ENERO-DICIEMBRE JANUARY-DECEMBER		VARIACION % ENE-DIC 2008/2007
			2007	2008	% VARIATION JAN-DEC 2008/2007
CODELCO-CHILE	1,678.4	1,835.3	1,835.3	1,717.6	-6.4
OTRAS EMPRESAS MINERAS	3,549.4	3,832.0	3,832.0	3,679.9	-4.0
OTHER MINING COMPANIES					
ENAMI	128.1	137.7	137.7	130.4	-5.3
ANGLO AMERICAN NORTE	108.1	113.3	113.3	131.3	15.9
ANGLO AMERICAN SUR	210.6	260.4	260.4	191.8	-26.3
XSTRATA COPPER CHILE S.A.	210.9	173.3	173.3	180.0	3.9
ESCONDIDA	1,140.5	1,353.0	1,353.0	1,152.4	-14.8
QUEBRADA BLANCA	78.0	80.7	80.7	84.3	4.5
PUNTA DEL COBRE	9.7	8.0	8.0	8.9	11.3
CERRO COLORADO	113.6	95.2	95.2	106.0	11.3
MINERA MICHILLA S.A.	45.8	44.8	44.8	47.4	5.8
CANDELARIA	155.2	179.3	179.3	169.6	-5.4
RAYROCK LTDA.	10.0	9.2	9.2	6.3	-31.5
EL ABRA	215.7	170.2	170.2	162.4	-4.6
ANDACOLLO	17.9	19.2	19.2	21.3	10.9
CIA.EXPLORADORA DE MINAS	12.0	10.7	10.7	11.4	6.5
ZALDIVAR	138.2	148.9	148.9	114.7	-23.0
COLLAHUASI	388.9	360.0	360.0	354.2	-1.6
CERRO DOMINADOR	11.9	16.5	16.5	17.7	7.3
LOMAS BAYAS	62.4	66.4	66.4	59.3	-10.7
EL TESORO	89.6	93.8	93.8	94.0	0.2
LOS PELAMBRES	353.4	305.5	305.5	378.2	23.8
ATACAMA KOZAN	6.7	13.6	13.6	8.1	-40.4
HALDEMAN	14.3	14.9	14.9	16.3	9.4
OJOS DEL SALADO	9.8	10.0	10.0	9.0	-10.0
GRACE S.A.	4.8	15.9	15.9	18.3	15.1
SPENCE	-	114.3	114.3	173.0	51.4
OTROS	13.3	17.2	17.2	33.6	95.3
TRANSFORMADORES	1.5	1.1	1.1	1.4	27.3
TRANSFORMERS					
MADECO	1.5	1.1	1.1	1.4	27.3
EXPORTADORES DE CHATARRA	4.7	5.0	5.0	6.4	28.0
SCRAP EXPORTERS					
DIONISIO S.A.	1.9	1.0	1.0	0.0	-100.0
INESA	-	-	-	0.0	-
MADECO	-	-	-	0.0	-
M.CERRILLOS	-	-	-	-	-
OTROS	2.8	4.0	4.0	6.4	60.0
TOTAL	5,234.0	5,673.4	5,673.4	5,405.3	-4.7

Nota: Las cifras corresponden a la fecha de emisión del Documento Unico de Salida (DUS).

Los valores del DUS son provisorios (para las exportaciones bajo condición), mientras no se reemplacen por los valores definitivos de los Informes de Variación de Valor (IVV).

Note: Figures correspond to the date indicated in the the Export Clearance (DUS).

Values of Export Clearance (DUS) are provisional (for exports under condition), until they are replaced by the definitive values in the Value Variation Reports (VVR).

FUENTE: COMISION CHILENA DEL COBRE.

**VALORES DE LOS EMBARQUES DE EXPORTACION DE COBRE Y SUBPRODUCTOS
SEGUN PAIS DE DESTINO AÑO 2007**

(FOB líquido de retorno en millones de dólares)

COPPER AND BY-PRODUCTS EXPORT SHIPMENTS VALUE BY DESTINATION COUNTRY YEAR 2007 (USD millions FOB)

PAIS DE DESTINO DESTINATION COUNTRY	COBRE(1) COPPER	PARTICIPACION(%) SHARE (%)	SUBPRODUCTOS(2) BY-PRODUCTS	PARTICIPACION(%) SHARE (%)	TOTAL TOTAL	PARTICIPACION(%) SHARE (%)
EUROPA/ EUROPE	9,831.6	25.9	1,519.7	41.5	11,351.3	27.3
Alemania/ Germany	1,061.7	2.8	26.5	0.7	1,088.2	2.6
Austria	-	-	7.1	0.2	7.1	0.0
Bélgica/ Belgium	381.7	1.0	46.9	1.3	428.7	1.0
Bulgaria	417.1	1.1	-	-	417.1	1.0
Chipre/ Cyprus	37.3	0.1	-	-	37.3	0.1
España/ Spain	581.1	1.5	50.2	1.4	631.3	1.5
Finlandia/ Finland	148.7	0.4	-	-	148.7	0.4
Francia/ France	1,978.9	5.2	-	-	1,978.9	4.8
Grecia/ Greece	338.6	0.9	-	-	338.6	0.8
Holanda/ Netherlands	1,920.6	5.1	1,130.8	30.9	3,051.5	7.3
Italia/ Italy	2,521.2	6.6	61.1	1.7	2,582.3	6.2
Polonia/ Poland	151.0	0.4	-	-	151.0	0.4
Reino Unido/ United Kingdom	107.7	0.3	59.9	1.6	167.6	0.4
Suecia/ Sweden	172.2	0.5	133.1	3.6	305.3	0.7
Suiza/ Switzerland	13.8	0.0	4.0	0.1	17.8	0.0
Otros/ Other	0.0	0.0	0.0	0.0	0.0	0.0
AMERICA / AMERICAS	6,644.9	17.5	1,024.0	28.0	7,668.9	18.4
Argentina	104.5	0.3	5.3	0.1	109.8	0.3
Bolivia	2.3	0.0	0.9	0.0	3.2	0.0
Brasil/ Brazil	1,978.1	5.2	192.7	5.3	2,170.8	5.2
Canadá / Canada	640.7	1.7	17.5	0.5	658.3	1.6
Colombia	35.1	0.1	-	-	35.1	0.1
Estados Unidos/ USA	3,065.1	8.1	574.4	15.7	3,639.5	8.8
México / Mexico	742.5	2.0	231.5	6.3	974.0	2.3
Perú / Peru	24.2	0.1	-	-	24.2	0.1
Venezuela	33.0	0.1	-	-	33.0	0.1
Otros/ Other	19.4	0.1	1.7	0.0	21.1	0.1
ASIA	19,656.1	51.8	1,066.5	29.2	20,722.6	49.8
Corea del Sur / South Korea	2,869.2	7.6	163.5	4.5	3,032.7	7.3
China	7,306.6	19.3	87.2	2.4	7,393.8	17.8
Filipinas/ Philippines	269.1	0.7	-	-	269.1	0.6
Hong Kong	6.5	0.0	-	-	6.5	0.0
India	2,249.8	5.9	12.7	0.3	2,262.5	5.4
Indonesia	0.1	0.0	-	-	0.1	0.0
Irán / Iran	182.7	0.5	-	-	182.7	0.4
Japón/ Japan	4,530.1	11.9	803.1	22.0	5,333.3	12.8
Malasia/ Malaysia	14.7	0.0	-	-	14.7	0.0
Omán / Oman	6.7	0.0	-	-	6.7	0.0
Singapur/ Singapore	63.2	0.2	-	-	63.2	0.2
Tailandia/ Thailand	184.7	0.5	-	-	184.7	0.4
Taiwan/ Taipei, China	1,502.8	4.0	-	-	1,502.8	3.6
Turquía/ Turkey	422.3	1.1	-	-	422.3	1.0
Vietnam	47.5	0.1	-	-	47.5	0.1
Otros/ Other	0.0	0.0	-	-	0.0	0.0
OTROS/ OTHER	1,780.6	4.7	47.6	1.3	1,828.2	4.4
Australia	106.6	0.3	0.3	0.0	106.8	0.3
Sudáfrica / Southafrica	-	-	44.5	1.2	44.5	0.1
Otros/ Other	1,674.0	4.4	2.8	0.1	1,676.8	4.0
TOTAL	37,913.2	100.0	3,657.8	100.0	41,571.0	100.0

(1) Embarques de exportación a consumidores finales y a plantas de tratamiento. /Export shipments to final consumers and treatment plants.

(2) Incluye: Barros Anódicos, Metal Doré, Plata, Selenio, Oxido de Molibdeno, Concentrados de Molibdeno y otros./

Includes: Anod slimes, dore, silver, selenium, molybdenum oxide, molybdenum concentrates and others.

FUENTE/ SOURCE: COMISION CHILENA DEL COBRE.

DESTINO DE LOS EMBARQUES FISICOS DE EXPORTACION DE COBRE (1)
AÑO 2007

(Miles de T.M. de Cobre Fino)

COPPER EXPORT SHIPMENTS QUANTITY BY DESTINATION COUNTRY YEAR 2007 (Thousand MT of fine copper)

PAIS DE DESTINO DESTINATION COUNTRY	REFINADOS(2) REFINED	BLISTER BLISTER	GRANELES(3) BULK	TOTAL TOTAL	PARTICIPACION PORCENTUAL SHARE (%)
EUROPA/ EUROPE	1,049.1	81.9	302.1	1,433.1	25.3
Alemania/ Germany	65.2	5.6	101.2	172.0	3.0
Belgica/ Belgium	0.9	49.2	6.5	56.6	1.0
Bulgaria	-	-	73.8	73.8	1.3
Chipre/ Cyprus	5.0	-	-	5.0	0.1
España/ Spain	42.8	0.3	41.5	84.6	1.5
Finlandia/ Finland	-	-	25.5	25.5	0.4
Francia/ France	273.6	-	-	273.6	4.8
Grecia/ Greece	46.5	-	-	46.5	0.8
Holanda/ Netherlands	245.9	26.7	-	272.7	4.8
Italia/ Italy	352.1	-	-	352.1	6.2
Polonia/ Poland	-	-	25.9	25.9	0.5
Reino Unido/ United Kingdom	15.2	-	0.2	15.4	0.3
Suecia/ Sweden	-	0.0	27.4	27.4	0.5
Suiza/ Switzerland	2.0	-	-	2.0	0.0
Otros/ Other	0.0	0.0	0.0	0.0	0.0
AMERICA / AMERICAS	519.3	276.5	158.1	953.9	16.8
Argentina	14.2	-	-	14.2	0.2
Bolivia	0.3	-	-	0.3	0.0
Brasil/ Brazil	152.7	0.0	148.0	300.7	5.3
Canada	1.0	87.5	3.8	92.3	1.6
Colombia	4.6	-	0.0	4.6	0.1
Estados Unidos/ United States	327.1	97.1	0.0	424.3	7.5
Mexico	14.8	91.9	-	106.6	1.9
Peru	0.2	0.0	3.4	3.7	0.1
Venezuela	4.3	-	-	4.3	0.1
Otros/ Other	0.1	0.0	2.8	3.0	0.1
ASIA	1,110.6	132.5	1,798.0	3,041.1	53.6
Corea del Sur / South Korea	186.3	66.1	174.6	427.0	7.5
China	573.0	55.6	503.6	1,132.2	20.0
Filipinas/ Philippines	-	-	43.5	43.5	0.8
Hong Kong	0.9	0.0	-	0.9	0.0
India	-	5.1	356.7	361.8	6.4
Indonesia	-	-	0.0	0.0	0.0
Irán	-	-	27.9	27.9	0.5
Japon/ Japan	66.4	3.1	666.5	736.0	13.0
Malasia/ Malaysia	2.2	-	-	2.2	0.0
Omán	-	-	1.6	1.6	0.0
Singapur/ Singapore	8.4	-	-	8.4	0.1
Tailandia/ Thailand	6.2	1.6	23.5	31.3	0.6
Taiwan/ Taipei, China	204.2	0.0	-	204.2	3.6
Turquía/ Turkey	56.5	1.0	-	57.5	1.0
Vietnam	6.5	-	-	6.5	0.1
Otros/ Other	0.0	0.0	0.0	0.0	0.0
OTROS/ OTHER	230.6	14.6	0.0	245.2	4.3
Australia	-	14.6	-	14.6	0.3
Otros/ Other	230.6	0.0	0.0	230.6	4.1
TOTAL	2,909.7	505.5	2,258.1	5,673.4	100.0

(1) Embarques de exportación a consumidores finales y a plantas de tratamiento. / Export shipments to final consumers and treatment plants.

(2) Incluye cátodos, formas especiales y refinado a fuego. / Includes cathodes, special forms and fire refined.

(3) Incluye cementos, concentrados y cobre secundario. / Includes cements, concentrates and secondary copper.

FUENTE/ SOURCE: COMISION CHILENA DEL COBRE.

**VALORES DE LOS EMBARQUES DE EXPORTACION DE COBRE Y SUBPRODUCTOS
SEGUN PAIS DE DESTINO AÑO 2008**

(FOB líquido de retorno en millones de dólares)

COPPER AND BY-PRODUCTS EXPORT SHIPMENTS VALUE BY DESTINATION COUNTRY YEAR 2008 (USD millions FOB)

PAIS DE DESTINO DESTINATION COUNTRY	COBRE(1) COPPER	PARTICIPACION(%) SHARE (%)	SUBPRODUCTOS(2) BY-PRODUCTS	PARTICIPACION(%) SHARE (%)	TOTAL TOTAL	PARTICIPACION(%) SHARE (%)
EUROPA/ EUROPE	9,975.0	27.3	1,379.9	43.4	11,354.8	28.6
Alemania/ Germany	1,126.1	3.1	16.0	0.5	1,142.1	2.9
Austria	0.0	-	1.0	0.0	1.0	0.0
Bélgica/ Belgium	236.5	0.6	52.6	1.7	289.1	0.7
Bulgaria	419.0	1.1	-	-	419.0	1.1
España/ Spain	956.9	2.6	66.5	2.1	1,023.3	2.6
Finlandia/ Finland	114.2	0.3	4.4	0.1	118.6	0.3
Francia/ France	1,679.9	4.6	9.7	0.3	1,689.6	4.3
Holanda/ Netherlands	2,129.5	5.8	956.4	30.1	3,085.9	7.8
Italia/ Italy	2,564.4	7.0	65.8	2.1	2,630.2	6.6
Polonia/ Poland	186.9	0.5	-	-	186.9	0.5
Reino Unido/ United Kingdom	74.7	0.2	77.2	2.4	151.9	0.4
Suecia/ Sweden	254.6	0.7	111.0	3.5	365.6	0.9
Suiza/ Switzerland	232.3	0.6	16.6	0.5	248.9	0.6
Otros/ Other	0.0	0.0	2.7	0.1	2.7	0.0
AMERICA / AMERICAS	6,756.7	18.5	733.9	23.1	7,490.5	18.9
Argentina	114.9	0.3	18.4	0.6	133.3	0.3
Bolivia	-	-	2.6	0.1	2.6	0.0
Brasil/ Brazil	2,437.3	6.7	239.8	7.5	2,677.1	6.7
Canadá / Canada	716.8	2.0	13.5	0.4	730.3	1.8
Colombia	18.3	0.1	-	-	18.3	0.0
Estados Unidos/ USA	2,566.2	7.0	365.6	11.5	2,931.8	7.4
México / Mexico	710.6	1.9	93.2	2.9	803.8	2.0
Panamá	123.7	0.3	-	0.0	123.7	0.3
Perú / Peru	29.3	0.1	0.7	0.0	30.0	0.1
Venezuela	39.4	0.1	-	-	39.4	0.1
Otros/ Other	0.2	0.0	0.0	0.0	0.2	0.0
ASIA	18,142.2	49.6	1,024.8	32.3	19,167.1	48.2
Corea del Sur / South Korea	2,800.5	7.7	180.1	5.7	2,980.6	7.5
China	7,222.8	19.8	16.0	0.5	7,238.8	18.2
Filipinas/ Philippines	297.1	0.8	-	-	297.1	0.7
Hong Kong	9.4	0.0	-	-	9.4	0.0
India	1,623.9	4.4	17.2	0.5	1,641.1	4.1
Indonesia	1.1	-	-	-	1.1	0.0
Irán / Iran	28.7	0.1	-	-	28.7	0.1
Japón/ Japan	4,281.9	11.7	799.6	25.2	5,081.5	12.8
Malasia/ Malaysia	40.7	0.1	-	-	40.7	0.1
Singapur/ Singapore	89.8	0.2	0.9	0.0	90.6	0.2
Tailandia/ Thailand	36.0	0.1	6.6	0.2	42.6	0.1
Taiwan/ Taipei, China	1,440.0	3.9	-	-	1,440.0	3.6
Turquía/ Turkey	222.2	0.6	2.7	0.1	224.9	0.6
Vietnam	47.9	0.1	-	-	47.9	0.1
Otros/ Other	0.0	0.0	1.8	0.1	1.8	0.0
OTROS/ OTHER	1,676.3	4.6	38.4	1.2	1,714.6	4.3
Australia	303.8	0.8	0.9	0.0	304.7	0.8
Sudáfrica / South Africa	-	-	37.5	1.2	37.5	0.1
Otros/ Other	1,372.4	3.8	-	-	1,372.4	3.5
TOTAL	36,550.2	100.0	3,176.9	100.0	39,727.1	100.0

(1) Embarques de exportación a consumidores finales y a plantas de tratamiento. /Export shipments to final consumers and treatment plants.

(2) Incluye: Barros Anódicos, Metal Doré, Plata, Selenio, Oxido de Molibdeno, Concentrados de Molibdeno y otros./

Includes: Anod slimes, dore, silver, selenium, molybdenum oxide, molybdenum concentrates and others.

FUENTE/ SOURCE: COMISION CHILENA DEL COBRE.

DESTINO DE LOS EMBARQUES FISICOS DE EXPORTACION DE COBRE (1)**AÑO 2008**

(Miles de T.M. de Cobre Fino)

COPPER EXPORT SHIPMENTS QUANTITY BY DESTINATION COUNTRY YEAR 2008 (Thousand MT of fine copper)

PAIS DE DESTINO DESTINATION COUNTRY	REFINADOS(2) REFINED	BLISTER BLISTER	GRANELES(3) BULK	TOTAL TOTAL	PARTICIPACION PORCENTUAL SHARE (%)
EUROPA/ EUROPE	1,063.3	66.6	330.2	1,460.1	27.0
Alemania/ Germany	56.6	5.0	107.0	168.6	3.1
Belgica/ Belgium	0.3	31.7	0.0	32.0	0.6
Bulgaria	-	-	66.5	66.5	1.2
España/ Spain	85.2	-	60.6	145.9	2.7
Finlandia/ Finland	-	-	20.6	20.6	0.4
Francia/ France	239.0	-	-	239.0	4.4
Holanda/ Netherlands	272.8	29.9	-	302.6	5.6
Italia/ Italy	372.1	-	-	372.1	6.9
Polonia/ Poland	-	-	29.0	29.0	0.5
Reino Unido/ United Kingdom	8.6	0.0	0.2	8.8	0.2
Suecia/ Sweden	-	-	46.2	46.2	0.9
Suiza/ Switzerland	28.5	-	-	28.5	0.5
Otros/ Other	0.0	0.0	0.0	0.0	0.0
AMERICA / AMERICAS	592.3	202.8	159.6	954.8	17.7
Argentina	14.8	-	-	14.8	0.3
Brasil/ Brazil	202.6	0.3	143.3	346.3	6.4
Canada	-	84.6	11.5	96.1	1.8
Colombia	2.2	-	0.1	2.3	0.0
Estados Unidos/ United States	329.4	43.0	0.0	372.4	6.9
Mexico	23.6	74.8	-	98.3	1.8
Panamá	15.0	-	0.3	15.3	0.3
Peru	-	0.0	4.2	4.2	0.1
Venezuela	4.7	-	-	4.7	0.1
Otros/ Other	0.0	0.0	0.3	0.3	0.0
ASIA	1,138.4	99.7	1,524.5	2,762.6	51.1
Corea del Sur / South Korea	223.9	23.4	163.0	410.3	7.6
China	606.3	58.2	456.1	1,120.6	20.7
Filipinas/ Philippines	1.0	-	43.6	44.6	0.8
Hong Kong	2.7	-	-	2.7	0.1
India	-	2.0	250.6	252.6	4.7
Indonesia	0.2	-	0.0	0.2	0.0
Irán	-	-	3.6	3.6	0.1
Japon/ Japan	53.1	10.6	607.5	671.2	12.4
Malasia/ Malaysia	7.5	-	-	7.5	0.1
Singapur/ Singapore	12.6	-	-	12.6	0.2
Tailandia/ Thailand	5.6	-	0.0	5.6	0.1
Taiwan/ Taipei, China	188.6	5.6	-	194.2	3.6
Turquía/ Turkey	30.0	-	-	30.0	0.6
Vietnam	6.8	-	-	6.8	0.1
Otros/ Other	0.0	0.0	0.0	0.0	0.0
OTROS/ OTHER	189.2	38.6	0.0	227.8	4.2
Australia	7.4	38.6	-	46.0	0.9
Otros/ Other	181.8	0.0	0.0	181.8	3.4
TOTAL	2,983.1	407.7	2,014.4	5,405.3	100.0

(1) Embarques de exportación a consumidores finales y a plantas de tratamiento. / Export shipments to final consumers and treatment plants.

(2) Incluye cátodos, formas especiales y refinado a fuego. / Includes cathodes, special forms and fire refined.

(3) Incluye cementos, concentrados y cobre secundario. / Includes cements, concentrates and secondary copper.

FUENTE/ SOURCE: COMISION CHILENA DEL COBRE.

VENTAS DE COBRE REFINADO A LA INDUSTRIA MANUFACTURERA NACIONAL
(Miles de T.M. de cobre fino)
REFINED COPPER SALES TO DOMESTIC MANUFACTURING INDUSTRY (Thousands MT of fine copper)

PERIODO PERIOD	ELECTROLITICO ELECTROLITHIC	TRES ESTRELLAS	TOTAL	
			PERIODO PERIOD	ACUMULADO ACUMMULATED
2003	76.4	18.3	94.7	-
2004	82.1	18.3	100.4	-
2005	85.7	17.0	102.7	-
2006	94.0	16.7	110.7	-
2007	95.1	10.2	105.3	-
ENE/ JAN / 2005	5.8	1.1	6.9	6.9
FEB	7.0	1.2	8.2	15.1
MAR	7.2	0.6	7.8	22.9
ABR/ APR	7.2	1.4	8.6	31.5
MAY	7.5	1.6	9.1	40.6
JUN	8.1	1.6	9.7	50.3
JUL	7.4	1.7	9.1	59.4
AGO/ AUG	8.2	1.8	10.0	69.4
SEP	6.6	1.6	8.2	77.6
OCT	7.6	1.6	9.2	86.8
NOV	7.1	1.4	8.5	95.3
DIC/ DEC	6.0	1.4	7.4	102.7
ENE/ JAN / 2006	7.9	1.2	9.1	9.1
FEB	8.1	1.4	9.5	18.6
MAR	10.3	1.6	11.9	30.5
ABR/ APR	8.4	2.0	10.4	40.9
MAY	8.7	1.5	10.2	51.1
JUN	8.1	1.9	10.0	61.1
JUL	8.5	1.6	10.1	71.2
AGO/ AUG	7.7	1.3	9.0	80.2
SEP	6.5	1.3	7.8	88.0
OCT	6.9	1.4	8.3	96.3
NOV	7.7	1.0	8.7	105.0
DIC/ DEC	5.2	0.5	5.7	110.7
ENE/ JAN / 2007	7.2	0.1	7.3	7.3
FEB	6.5	0.5	7.0	14.3
MAR	8.1	1.0	9.1	23.4
ABR/ APR	8.3	1.5	9.8	33.2
MAY	9.1	1.4	10.5	43.7
JUN	8.8	1.3	10.1	53.8
JUL	7.9	1.3	9.2	63.0
AGO/ AUG	7.6	0.5	8.1	71.1
SEP	7.6	1.0	8.6	79.7
OCT	9.7	0.7	10.4	90.1
NOV	9.4	0.5	9.9	100.0
DIC/ DEC	4.9	0.4	5.3	105.3
ENE/ JAN / 2008	8.5	1.4	9.9	9.9
FEB	8.1	1.2	9.3	19.2
MAR	8.3	1.1	9.4	28.6
ABR/ APR	8.8	0.4	9.2	37.8
MAY	9.2	0.4	9.6	47.4
JUN	7.7	0.7	8.4	55.8
JUL	9.5	0.8	10.3	66.1
AGO/ AUG	8.4	0.6	9.0	75.1
SEP	7.8	0.7	8.5	83.6
OCT	7.5	0.4	7.9	91.5
NOV	6.3	0.4	6.7	98.2
DIC/ DEC	4.6	0.3	4.9	103.1
ENE-DIC/ JAN-DEC / 2008	94.7	8.4	103.1	
ENE-DIC/ JAN-DEC / 2007	95.1	10.2	105.3	
VARIACION % / % VARIATION				
ENE-DIC/ JAN-DEC/ 2008-2007	-0.4	-17.6	-2.1	

FUENTE/ SOURCE: COMISION CHILENA DEL COBRE.

**ANTECEDENTES DE LOS CONTRATOS DE
EXPORTACIONES CHILENAS DE CONCENTRADOS
Y CATODOS DE COBRE /
CHILEAN COPPER CONCENTRATES AND CATHODES
EXPORT CONTRACTS INFORMATION**

Características de los contratos de exportación de concentrados 2008 Characteristics of 2008 concentrates export contracts

Criterios y definiciones / Criteria and definitions:

1. Tipo de Contrato / Type of Contract:

La clasificación es la siguiente / The classification is the following :

Tipo / type	Contratos incluidos / Included contracts
Abastecimiento Anual (1)	Anual / Annual
Abastecimiento Evergreen (2)	Evergreen
Abastecimiento Largo Plazo (3)	Largo plazo / Long term
Spot (4)	Spot

- (1) Venta con entrega durante todo el año. Normalmente, tienen los términos acordados para todas las cuotas.
/ Sale with delivery during all the year. Normally, they have the terms agreed for all the quotas.
- (2) Venta con compromiso de entrega superior a un año, con vigencia sujeta a renovación periódica por las partes. / Sale with commitment of delivery over a year, with duration depending to periodic renewal by the parts.
- (3) Venta con compromiso de entrega superior a un año, donde se fija la mayoría de las condiciones dejando algunos términos comerciales bajo negociación periódica durante la vida del contrato.
/ Sale with commitment of delivery over a year, where the majority of the conditions are fixed leaving some commercial terms for periodic negotiation during the life of the contract.
- (4) Venta ocasional. / Occasional Sale.

2. Q/P

Período de preciación (Quotation Period), período que se toma como referencia para efectos de la valoración del producto. / Quotation Period, is the period taken as a reference in order to appraise the product.

En los contratos evergreen la relación contractual está siempre vigente, a diferencia de los contratos anuales que duran un período. / Evergreen contracts are always in force, meanwhile annual contracts last for only one period.

Los contratos de abastecimiento de largo plazo (más de un año), no necesariamente incorporan en el contrato inicial los Q/P; estos se establecen posteriormente. / Long-term supplies contract (more than one year), do not necessarily add Q/P to the initial contract; these are established lately.

Otra situación que genera desconocimiento inicial del Q/P a utilizar, corresponde a los contratos que incorporan una cláusula de opción de fijar el Q/P durante el período de vigencia del contrato. / Another situation leading to an initial disregard of the Q/P to be used, corresponds to contracts which incorporate a clause with the option to fix Q/P during the contract duration period.

Para efectos de agregar la información de los contratos se han sumado los Q/P según la siguiente tabla: / To add information of the contracts, Q/P have been added according to the following table:

Q/P	Definición/ Definition	Agrupados bajo:/ Grouped under:
A + 2	Segundo Mes después del arribo / Second month upon arrival	A + 2
A + 3	Tercer Mes después del arribo / Third month upon arrival	A + 3
M / M + 3	Tercer mes después del M / Thirth month following to the M	M / M + 3
M / M + 4	Cuarto mes después del M / Fourth month following to the M	M / M + 4
M / M + 5	Quinto mes después del M / Fifth month following to the M	M / M + 5
MEE / EMS + 4	Cuarto mes después del MEE / Fourth month following to the EMS	MEE / EMS + 4
M / M -1	Primer mes anterior al M / First month prior to the M	Otros/ Other
M / M	Mes contractual de embarque / Contractual month of shipment	
M / M + 1	Primer mes después del M / First month following to the M	
M / M + 2	Segundo mes después del M / Second month following to the M	
MEE / EMS + 3	Tercer mes después del MEE / Thirth month following to the EMS	
EFE	Entre fechas distintas a mensual / Between dates different to monthly	

Definiciones / Definitions:

M: Mes contractual de embarque / M: Contractual month of shipment

MEE: Mes efectivo del embarque / EMS: Effective month of shipment

Nota: Las exportaciones de concentrados informadas a la fecha, están sujetas a eventuales modificaciones que podrían realizar los exportadores./ Note: Concentrates exports informed up to date, are subject to eventual modifications by the exporters.

COMPROMISOS DE EXPORTACION DE CONCENTRADOS DE COBRE
Tonelaje y TC-RC Comprometido: Año 2008
COPPER CONCENTRATES EXPORT AGREEMENTS
Tonnage and TC-RC Agreed in Year 2008

I. SEGUN TIPO DE CONTRATO Y REGION / BY TYPE OF CONTRACT AND REGION

TONELAJE (TMS) / TONNAGE (MT) (1)	DESTINO CONTRACTUAL / CONTRACTUAL DESTINATION				TOTAL
	ASIA	EUROPA / Europe	Sudamérica y otros / South America and Others	Comerciantes/ Trader	
Abastecimiento / Supply	3,342,204	537,151	254,059	20,000	4,153,414
Abastecimiento Anual	853,465	110,000	122,000	20,000	1,105,465
Abastecimiento Evergreen	784,073	316,151			1,100,224
Abastecimiento Largo Plazo	1,704,666	111,000	132,059		1,947,725
Spot	441,500	74,600	51,850	93,000	660,950
Total contratos / Total contracts (1)	3,783,704	611,751	305,909	113,000	4,814,364

TC - RC (2)	DESTINO CONTRACTUAL / CONTRACTUAL DESTINATION				TOTAL
	ASIA	EUROPA / Europe	Sudamérica y otros / South America and Others	Comerciantes/ Trader	
Abastecimiento / Supply					
TC ponderado (US\$/TM) / Weighted TC (USD/MT)	56.4	60.9	58.7	45.0	57.1
Abastecimiento Anual	61.3	51.8	66.3	45.0	60.6
Abastecimiento Evergreen	50.7	63.9			54.5
Abastecimiento Largo Plazo	56.6	61.2	51.6		56.5
TC Minimo / Maximo (Low / High)	(2,0 ; 121,5)	(45,0 ; 102,,0)	(45,0 ; 95,0)	(45,0 ; 45,0)	(2,0 ; 121,5)
RC ponderado (¢/lb) / Weighted RC (¢/lb)	5.6	6.1	5.9	4.5	5.7
Abastecimiento Anual	6.0	5.0	6.7	4.5	5.9
Abastecimiento Evergreen	5.1	6.4			5.4
Abastecimiento Largo Plazo	5.7	6.1	5.2		5.7
RC Minimo / Maximo (Low / High)	(1,7 ; 10,3)	(4,5 ; 10,2)	(4,5 ; 9,5)	(4,5 ; 4,5)	(1,7 ; 10,3)
Spot					
TC ponderado (US\$/TM) / Weighted TC (USD/MT)	41.9	34.1	15.7	50.3	39.7
Minimo / Maximo (Low / High)	(1,8 ; 193,0)	(4,0 ; 94,0)	(4,0 ; 45,0)	(45,0 ; 70,0)	(1,8 ; 193,0)
RC ponderado (¢/lb) / Weighted RC (¢/lb)	3.2	3.4	1.6	5.0	3.3
Minimo / Maximo (Low / High)	(0,2 ; 7,0)	(0,4 ; 9,4)	(0,4 ; 4,5)	(4,5 ; 7,0)	(0,2 ; 9,4)
Total					
TC ponderado (US\$/TM) / Weighted TC (USD/MT)	54.8	57.6	51.4	49.2	54.8
RC ponderado (¢/lb) / Weighted RC (¢/lb)	5.3	5.7	5.2	4.9	5.4

II. SEGUN Q/P Y REGION / BY Q/P AND REGION

TONELAJE (TMS) / TONNAGE (MT) (2)	DESTINO CONTRACTUAL / CONTRACTUAL DESTINATION				TOTAL
	ASIA	EUROPA / Europe	Sudamérica y otros / South America and Others	Comerciantes/ Trader	
Q/P (3)					
A+2	459,027	39,500			498,527
A+3	1,285,343	55,000			1,340,343
M+3	160,850	80,000	234,499		475,349
M+4	649,600	47,000	50,000	83,000	829,600
M+5	475,000	10,000			485,000
MEE+4	305,762	168,491		20,000	494,253
Otros	448,122	211,760	21,410	10,000	691,292
Total	3,783,704	611,751	305,909	113,000	4,814,364

TC - RC (2)	DESTINO CONTRACTUAL / CONTRACTUAL DESTINATION				TOTAL
	ASIA	EUROPA / Europe	Sudamérica y otros / South America and Others	Comerciantes/ Trader	
Q/P (3)					
A+2					
TC ponderado (US\$/TM) / Weighted TC (USD/MT)	49.6	77.8			51.8
RC ponderado (¢/lb) / Weighted RC (¢/lb)	5.0	7.8			5.2
A+3					
TC ponderado (US\$/TM) / Weighted TC (USD/MT)	60.2	51.8			59.9
RC ponderado (¢/lb) / Weighted RC (¢/lb)	6.0	4.9			6.0
M+3					
TC ponderado (US\$/TM) / Weighted TC (USD/MT)	41.6	54.7	58.6		52.2
RC ponderado (¢/lb) / Weighted RC (¢/lb)	4.2	5.5	5.9		5.2
M+4					
TC ponderado (US\$/TM) / Weighted TC (USD/MT)	45.5	29.4	14.6	51.1	43.0
RC ponderado (¢/lb) / Weighted RC (¢/lb)	4.5	2.9	1.5	5.1	4.3
M+5					
TC ponderado (US\$/TM) / Weighted TC (USD/MT)	51.7	19.1			50.8
RC ponderado (¢/lb) / Weighted RC (¢/lb)	5.3	1.9			5.2
MEE+4					
TC ponderado (US\$/TM) / Weighted TC (USD/MT)	50.0	45.8		45.0	48.3
RC ponderado (¢/lb) / Weighted RC (¢/lb)	5.0	4.6		4.5	4.8
Otros / Others					
TC ponderado (US\$/TM) / Weighted TC (USD/MT)	67.6	74.0	58.7	45.0	69.0
RC ponderado (¢/lb) / Weighted RC (¢/lb)	5.6	7.4	5.9	4.5	6.1
Total					
TC ponderado (US\$/TM) / Weighted TC (USD/MT)	54.8	57.6	51.4	49.2	54.8
RC ponderado (¢/lb) / Weighted RC (¢/lb)	5.3	5.7	5.2	4.9	5.4

Cifras provisionarias. Ver características de los contratos para los Q/P. / Provisional figures. Please review contracts for Q/P characteristics.

(1) Incluye todos los contratos registrados a la fecha. / Includes contracts registered up date.

(2) Se excluyen contratos sin información y casos especiales. / Excludes contracts without information and special cases.

(3) Condiciones incluidas según su importancia relativa en los Q/P totales. / Included conditions depends on relative importance on Q/P.

Fuente / Source: Elaborado por la Comisión Chilena del Cobre

Características de los contratos de exportación de cátodos 2008 Characteristics of 2008 cathodes export contracts

Crterios y definiciones / Criteria and definitions:

1. Tipo de Producto / Type of Product:

Los cátodos estándar incluyen tanto a aquellos con defectos físicos como los que no se encuentran registrados en Bolsas de Metales. El cátodo grado A corresponde a aquel registrado en Bolsa de Metales / Standard cathodes includes those with physical defects and those not registered in Metal Exchanges. A grade cathode corresponds to those registered in Metal Exchanges.

2. Q/P

Período de apreciación (Quotation Period), período que se toma como referencia para efectos de la valoración del producto. Para efectos de agregar la información de los contratos se han sumado los Q/P según la siguiente tabla:/ The Quotation Period, is the period taken as a reference in order to appraise the product. To add to the information of the contracts, the Q/P have been added according to the following table:

Q/P	Definición/ Definition	Agrupados bajo:/ Crowed under:
M / M	Mes contractual de embarque/ Contractual month of shipment	M / M
M / M + 1	Mes siguiente al M / Month following to the M	M / M +1
M / M + 2	Segundo mes luego del M / Second month following to the M	M / M +2
A - 1	Primer mes antes del arribo / First month prior to the arrival	Otros/ Other
M / M - 1	Primer mes anterior al M / First month prior to the M	
MEE / EMS + 1	Primer mes después del MEE / First month following to the EMS	
MEE / EMS + 2	Segundo mes después del MEE / Second month following to the EMS	
EFE	Entre fechas distintas a mensual/ Between dates different to monthly	
PRFIJO	Precio fijo/ Fixed price	

Definiciones / Definitions:

M: Mes contractual de embarque / M: Contractual month of shipment

MEE: Mes efectivo del embarque / EMS: Effective month of shipment

Nota: Las exportaciones de cátodos informadas a la fecha, están sujetas a eventuales modificaciones que podrían realizar los exportadores./ Note: Cathodes exports informed up to date, are subject to eventual modifications by the exporters.

COMPROMISOS DE EXPORTACION DE CATODOS DE COBRE
Tonelage y Premio Comprometido: Año 2008
COPPER CATHODES EXPORT AGREEMENTS
Tonnage and Premium Agreed in Year 2008

I. SEGUN TIPO DE CONTRATO Y PRODUCTO/ BY TYPE OF CONTRACT AND PRODUCT

TONELAJE / TONNAGE (MT)	DESTINO CONTRACTUAL / CONTRACTUAL DESTINATION					TOTAL
	ASIA	EUROPA / Europe	Norteamérica / North America	Sudamérica y otros / South America and Others	Comerciantes/ Trader	
Tipo de Contrato-Producto / Type of Contract -Product						
Abastecimiento / Supply						
Estándar / Standard	141,335	78,524	19,072	36,800	10,100	285,831
Grado A / A Grade	633,236	707,891	178,150	105,685	97,100	1,722,062
Off Grade	35,026	10,701	4,725	6,000		56,452
Total abastecimiento / Total supply	809,597	797,116	201,946	148,485	107,200	2,064,345
Spot						
Estándar / Standard	34,676	37,439	10,816	2,200	27,897	113,028
Grado A / A Grade	45,500	142,555	59,300	43,300	221,000	511,655
Off Grade	13,380	24,231	1,850	1,000	32,526	72,987
Total spot	93,556	204,225	71,966	46,500	281,423	697,670
Total contratos / Total contracts	903,153	1,001,342	273,912	194,985	388,623	2,762,015

PREMIO PONDERADO / WEIGHTED PREMIUM (USD)	DESTINO CONTRACTUAL / CONTRACTUAL DESTINATION					TOTAL
	ASIA	EUROPA / Europe	Norteamérica / North America	Sudamérica y otros / South America and Others	Comerciantes/ Trader	
Tipo de Contrato-Producto / Type of Contract -Product						
Abastecimiento / Supply						
Estándar / Standard	21.4	86.3	84.0	30.8	-30.6	69.1
Grado A / A Grade	113.4	115.7	108.9	90.4	110.9	113.8
Off Grade	14.7	17.0	12.8	60.0		16.3
Promedio abastecimiento / Supply average	100.7	105.5	101.5	86.8	100.2	103.3
Minimo / Maximo (Low / High)	(-325.0 ; 150.0)	(-89.0 ; 173.4)	(-89.0 ; 150.0)	(-55.0 ; 150.0)	(-70.0 ; 143.0)	(-325.0 ; 173.4.)
Spot						
Estándar / Standard	58.6	67.2	72.3	-37.4	-17.2	47.5
Grado A / A Grade	66.7	75.8	79.1	-9.3	71.7	68.0
Off Grade	-127.0	-39.5	-89.0		-232.8	-172.1
Promedio spot / Spot average	47.3	58.3	71.3	-11.3	18.8	34.4
Minimo / Maximo (Low / High)	(-250.0 ; 205.0)	(-250.0 ; 205.0)	(-225.0 ; 205.0)	(-100.0 ; 160.0)	(-255.0 ; 95.0)	(-255.0 ; 205.0)
Promedio Total / Total average	99.6	104.7	100.3	80.9	37.8	100.5

II. SEGUN BOLSAS DE METALES Y Q/P / BY METAL EXCHANGES AND Q/P

TONELAJE / TONNAGE (MT)	DESTINO CONTRACTUAL / CONTRACTUAL DESTINATION					TOTAL
	ASIA	EUROPA / Europe	Norteamérica / North America	Sudamérica y otros / South America and Others	Comerciantes/ Trader	
Bolsa - Q/P / Exchange - Q/P (1)						
LME	903,153	1,001,342	96,717	172,985	383,623	2,557,820
M / M	27,600	26,115	1,700	21,555	30,800	107,770
M+1 / M+1	803,862	865,327	68,117	103,055	314,325	2,154,686
M+2 M.+2	41,661	15,500		2,450	37,498	97,109
Otros Q/P / Other Q/P	30,030	94,400	26,900	45,925	1,000	198,255
COMEX	-	-	177,195	22,000	5,000	204,195
M / M			27,620	22,000		49,620
M+1 / M+1			142,225		5,000	147,225
M+2 M.+2			7,350			7,350
Otros Q/P / Other Q/P						-
Total	903,153	1,001,342	273,912	194,985	388,623	2,762,015

PREMIO PONDERADO / WEIGHTED PREMIUM (USD)	DESTINO CONTRACTUAL / CONTRACTUAL DESTINATION					TOTAL
	ASIA	EUROPA / Europe	Norteamérica / North America	Sudamérica y otros / South America and Others	Comerciantes/ Trader	
Bolsa - Q/P / Exchange - Q/P (1)						
LME						
M / M	83.5	68.8	76.9	54.6	114.3	82.0
M+1 / M+1	100.2	104.8	107.0	88.3	35.5	101.6
M+2 M.+2	21.5	102.6		45.4	17.6	32.7
Otros Q/P / Other Q/P	109.2	102.0	34.7	21.7	25.0	96.1
Promedio LME / LME Average	99.6	104.7	106.8	81.4	38.9	101.0
COMEX						
M / M			48.4	66.1		56.1
M+1 / M+1			53.2		-90.0	48.4
M+2 M.+2			0.6			0.6
Otros Q/P / Other Q/P			50.8	66.1	-90.0	48.9
Promedio COMEX / COMEX Average	99.6	104.7	100.3	80.9	37.8	100.5
Promedio Total / Total average						

Cifras provisionarias. Ver características de los contratos para los Q/P. / Provisional figures. Please review contracts for Q/P characteristics.

(1) Condiciones incluidas según su importancia relativa en los Q/P totales. / Included conditions depends on relative importance on Q/P.

Fuente / Source: Elaborado por la Comisión Chilena del Cobre

Este trabajo fue efectuado por:

Juan Ocaranza A.
Juan Ciudad L.
Oscar Arce U.

FEBRERO, 2009 - FEBRUARY, 2009