

BOLETIN MENSUAL
MONTHLY REPORT

MARZO 2009
MARCH 2009

Está permitida la reproducción total o parcial de este documento citando la fuente.
Esta es una publicación de la Comisión Chilena del Cobre, institución autónoma de carácter público
que tiene entre su misión la difusión de la actividad minera.

Agustinas 1161, 4° piso. Teléfono (56 2) 3828100. www.cochilco.cl
Total or partial reproduction is allowed, indicating its source: "Comisión Chilena del Cobre"

I. RESUMEN PRINCIPALES ESTADISTICAS MARZO 2009	
<i>MAIN STATISTICS SUMMARY MARCH 2009</i>	
II. ANTECEDENTES DE PRECIOS / PRICE INFORMATION	
2.1 Precio del cobre refinado, nominal y real; B.M.L. y COMEX; mensual 2006 - 2009	1
<i>Refined copper prices, nominal and real; LME and COMEX; 2006-2009 monthly</i>	
2.2 Precio del cobre refinado, nominal y real; B.M.L. y COMEX; anual 1935 - 2009	2
<i>Refined copper prices, nominal and real; LME and COMEX; 1935-2009 annual</i>	
2.3 Precio promedio del cobre en la B.M.L., mensual, acumulado anual y 12 meses, nominal	3
<i>LME copper average prices; monthly, accumulated per annum, and 12 months, nominal</i>	
2.4 Precios diarios del cobre en bolsas - cátodos grado "A", Marzo 2009	4
<i>Exchanges daily copper prices - A grade cathodes, March 2009</i>	
2.5 Stocks de cobre en bolsas-cátodos grado "A"	5
<i>Copper warehouse stocks - A grade cathodes</i>	
2.6 Volúmenes de cobre transado en bolsas - cátodos grado "A"	6
<i>Copper ring volume - A grade cathodes</i>	
2.7 Volúmenes e intereses abiertos de futuros y opciones de cobre en la B.M.L.	7
<i>LME copper futures & option volume and open interest</i>	
2.8 Precio promedio del cobre en Estados Unidos, productores, COMEX y chatarra, nominales	8
<i>Copper average prices in U.S.A.: producers, COMEX, and scrap, nominal</i>	
2.9 Precios promedios metales preciosos, nominales	9
<i>Precious metals average prices, nominal</i>	
2.10 Precios diarios Oro: Marzo 2009	10
<i>Gold daily prices: March 2009</i>	
2.11 Precios diarios Plata: Marzo 2009	11
<i>Silver daily prices: March 2009</i>	
2.12 Precios promedios otros metales, nominales	12
<i>Other metals average prices, nominal</i>	
2.13 Precios diarios Otros Metales Bolsa de Metales de Londres, nominal: Marzo 2009	13
<i>Other metals daily prices LME, nominal: March 2009 prices</i>	
2.14 Paridades monedas extranjeras, promedios Banco Central de Chile	14
<i>Parity Central Bank of Chile</i>	
III. ANTECEDENTES DE PRODUCCION Y EXPORTACIONES	
<i>PRODUCTION AND EXPORTS INFORMATION</i>	
3.1 Producción chilena de cobre y molibdeno comerciable	15
<i>Chilean copper and molybdenum production</i>	
3.2 Producción chilena de cobre comerciable por empresa	16
<i>Chilean copper production by company</i>	
3.3 Evolución de exportaciones por destinos y productos	17
<i>Exports evolution by destination and product type</i>	
3.4 Valores de los embarques de exportación de cobre y subproductos	18
<i>Copper and by-products export shipments value</i>	
3.5 Embarques físicos de exportación de cobre y concentrados de molibdenita	19
<i>Copper and molybdenite concentrates export shipments quantity</i>	
3.6 Embarques físicos de exportación de cobre por exportador	20
<i>Copper export shipments quantity by exporter</i>	
3.7 Valores de los embarques de exportación de cobre y subproductos según país de destino - año 2008	21
<i>Copper and by-products export shipments value by destination country - year 2008</i>	
3.8 Embarques físicos de exportación de cobre según país de destino - año 2008	22
<i>Copper export shipments quantity by destination country - year 2008</i>	
3.9 Valores de los embarques de exportación de cobre y subproductos según país de destino enero-febrero 2009	23
<i>Copper and by-products export shipments value by destination country january-february 2009</i>	
3.10 Embarques físicos de exportación de cobre según país de destino enero-febrero 2009	24
<i>Copper export shipments quantity by destination country january-february 2009</i>	
3.11 Entregas de cobre refinado a la industria manufacturera nacional	25
<i>Refined copper sales to domestic manufacturing industry</i>	
IV. ANTECEDENTES DE LOS CONTRATOS DE EXPORTACIONES CHILENAS DE CONCENTRADOS Y CATODOS DE COBRE/ CHILEAN COPPER CONCENTRATES AND CATHODES EXPORT CONTRACTS INFORMATION	
4.1 Características de los contratos de exportación de concentrados de cobre - año 2009	27
<i>Characteristics of copper concentrates export contracts - year 2009</i>	
4.2 Contratos de exportación de concentrados de cobre - año 2009	28
<i>Copper concentrates export contracts - year 2009</i>	
4.3 Características de los contratos de exportación de cátodos de cobre - año 2009	29
<i>Characteristics of copper cathodes export contracts - year 2009</i>	
4.4 Contratos de exportación de catodos de cobre - año 2009	30
<i>Copper cathodes export contracts - year 2009</i>	

Resumen Principales Estadísticas Marzo 2009 Main Statistics Summary - March 2009

Precio del Cobre LME / Copper price (¢US\$/lb)

Promedio Mensual Marzo 2009 /	
March 2009 Monthly Avg	170.086
Promedio año a la fecha / Up to date annual average	155.822
Valor Mínimo año 2009 / Minimum value	138.368
Valor Máximo año 2009 / Maximum value	184.975

Precio del Cobre Comex/ COMEX copper price (¢US\$/lb)

Promedio Primera Posición Marzo /	
March first position avg	171.698

Precio Promedio Principales Metales Marzo

March Main Metals Average Price	
Plata / Silver (US\$/ Onza; London Spot)	13.12
Oro / Gold (US\$/ Onza; London Inicial)	925.9
Aluminio /Aluminum (¢US\$/LB; LME)	60.6
Plomo / Lead (¢US\$/LB; LME)	56.2
Zinc (¢US\$/LB; LME)	55.2
Estaño / Tin (¢US\$/LB; Comerciantes EEUU / US Merchants)	509.2
Níquel / Nickel (¢US\$/LB; LME)	439.8
Molibdeno / Molybdenum (US\$/LB; Comerciantes EEUU)	8.42

Exportaciones Chilenas de Cobre (Millones de US\$)

Chilean Copper Exports (USD Millions)	
Feb / Feb 2009	1,247.1

Acumulado / Accumulated:

Ene-Feb 2008/ Jan-Feb 2008	6,417.8
Ene-Feb 2009/ Jan-Feb 2009	2,718.3
Variación / Variation	-57.6%

Stocks Cobre Bolsas / Metal Exchanges Copper Stocks (TMF)

			Variación % /
	27-02-2009	31-03-2009	% Variation
LME	542,300	499,625	-7.9%
COMEX	41,100	41,899	1.9%
SHANGHAI	28,332	25,181	-11.1%
TOTAL	611,732	566,705	-7.4%

Producción Chilena de Cobre Comercializable (Miles de TMF)

Chilean Copper Production (thousand FMT)	
Feb / Feb 2009	373.9

Acumulado / Accumulated:

Ene-Feb 2008/ Jan-Feb 2008	856.4
Ene-Feb 2009/ Jan-Feb 2009	802.0
Variación / Variation	-6.4%

Exportaciones Chilenas de Cobre (Miles de TMF)

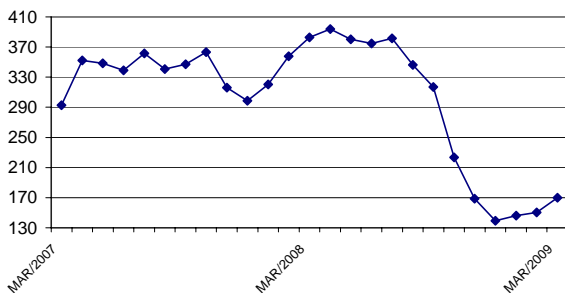
Chilean Copper Exports (Thousands FMT)	
Feb / Feb 2009	408.6

Acumulado / Accumulated:

Ene-Feb 2008/ Jan-Feb 2008	920.3
Ene-Feb 2009/ Jan-Feb 2009	897.4
Variación / Variation	-2.5%

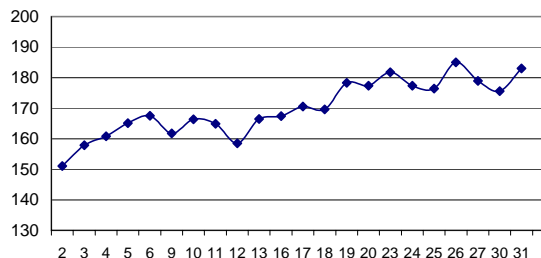
Precio Promedio Mensual Cobre

¢US\$/lb
Copper Monthly Average Price



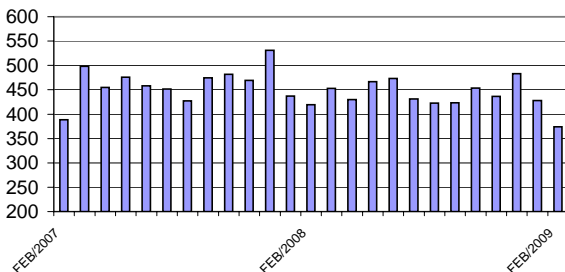
Evolución diaria Precio del Cobre LME

(¢US\$/lb; marzo 2009)
Daily copper price evolution - march 2009



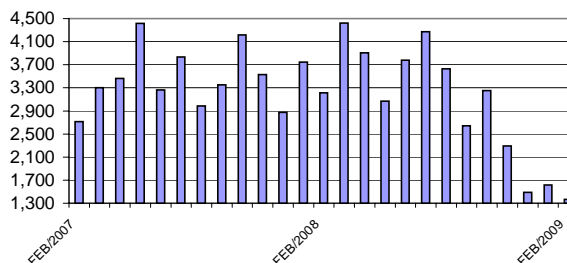
Producción Chilena de Cobre Comercializable

(miles de TMF)
Chilean Copper Production (thousand FMT)



Valor de Exportaciones de Cobre y

Subproductos
(Millones de US\$; FOB)
Copper and by-products exports (USD millions; FOB)



**ANTECEDENTES DE PRECIOS /
PRICE INFORMATION**

PRECIO DEL COBRE REFINADO, NOMINAL Y REAL
(Centavos de dólar por libra)
REFINED COPPER PRICES, NOMINAL AND CONSTANT (USD cents/lb.)

	NOMINAL		REAL / CONSTANT(1)	
	B.M.L. / LME	COMEX	B.M.L./ LME	COMEX
ENE/ JAN / 2006	214.746	218.258	221.5	225.2
FEB	225.998	225.079	236.8	235.8
MAR	231.461	232.409	241.9	242.9
ABR/ APR	289.745	296.853	298.9	306.2
MAY	364.954	375.861	373.1	384.2
JUN	326.478	339.648	333.2	346.6
JUL	349.815	362.321	355.5	368.2
AGO/ AUG	349.069	353.061	352.4	356.4
SEP	344.837	346.358	353.4	354.9
OCT	340.212	339.400	355.5	354.7
NOV	318.838	316.560	328.3	326.0
DIC/ DEC	302.778	301.413	309.9	308.5
ENE-DIC/ JAN-DEC	305.295	308.935	313.4	317.5
ENE/ JAN / 2007	257.171	258.305	265.8	267.0
FEB	257.479	259.661	261.6	263.9
MAR	292.680	292.270	293.0	292.6
ABR/ APR	352.281	350.840	348.4	347.0
MAY	348.457	348.248	340.8	340.6
JUN	339.100	338.764	330.7	330.4
JUL	361.691	361.595	350.1	350.0
AGO/ AUG	340.807	336.783	335.1	331.1
SEP	346.952	345.616	339.0	337.6
OCT	363.256	358.887	352.4	348.2
NOV	316.005	312.924	299.2	296.3
DIC/ DEC	298.812	302.170	283.6	286.8
ENE-DIC/ JAN-DEC	323.246	322.172	316.6	316.0
ENE/ JAN / 2008	320.283	320.171	299.9	299.8
FEB	357.780	358.955	331.9	333.0
MAR	382.800	381.108	345.3	343.8
ABR/ APR	393.942	393.939	349.8	349.8
MAY	380.235	377.421	327.8	325.4
JUN	374.694	368.974	316.8	311.9
JUL	381.655	375.939	314.8	310.1
AGO/ AUG	346.304	343.640	295.0	292.7
SEP	317.100	314.293	273.0	270.6
OCT	223.426	218.565	203.2	198.7
NOV	168.600	168.497	161.0	160.9
DIC/ DEC	139.343	138.798	137.9	137.3
ENE-DIC/ JAN-DEC	315.316	313.358	279.7	277.8
ENE/ JAN / 2009	146.088	147.848	144.8	146.6
FEB	150.353	150.639	150.4	150.6
MAR	170.086	171.698	170.1	171.7
ENE-MAR/ JAN-MAR / 2009	155.822	156.728	155.1	156.3
ENE-MAR/ JAN-MAR / 2008	352.142	353.411	325.7	325.5
VARIACION % / % VARIATION				
ENE-MAR/ JAN-MAR 2009/2008	-55.8	-55.7	-52.4	-52.0

(1) Deflactor: Índice de Precios al por Mayor de Estados Unidos (PPI, all commodities), base febrero 2009=100./ Deflator: U.S. Producer Price Index (PPI, all Commodities). February2009 = 100.

PRECIO DEL COBRE REFINADO, NOMINAL Y REAL
(Centavos de dólar por libra)
REFINED COPPER PRICES, NOMINAL AND CONSTANT (USD cents/lb.)

AÑO	NOMINAL		REAL / CONSTANT(1)	
	B.M.L. / LME	COMEX	B.M.L./ LME	COMEX
1935	6.973	N.D.	85.6	N.D.
1936	8.531	N.D.	103.3	N.D.
1937	12.021	N.D.	136.7	N.D.
1938	8.885	N.D.	110.6	N.D.
1939	8.453	N.D.	123.7	N.D.
1940	10.601	N.D.	132.8	N.D.
1941	11.159	N.D.	125.5	N.D.
1942	11.168	N.D.	111.1	N.D.
1943	11.168	N.D.	106.4	N.D.
1944	11.168	N.D.	105.6	N.D.
1945	11.155	N.D.	104.0	N.D.
1946	13.893	N.D.	113.4	N.D.
1947	23.477	N.D.	155.6	N.D.
1948	24.116	N.D.	148.0	N.D.
1949	21.899	N.D.	141.0	N.D.
1950	22.353	N.D.	138.1	N.D.
1951	27.541	N.D.	153.3	N.D.
1952	32.349	N.D.	184.5	N.D.
1953	32.180	N.D.	185.8	N.D.
1954	31.265	N.D.	180.7	N.D.
1955	43.898	42.729	253.1	246.6
1956	41.072	39.821	229.5	222.4
1957	27.455	27.227	149.4	148.2
1958	24.730	25.279	132.5	135.5
1959	29.735	31.153	158.8	166.4
1960	30.751	30.732	164.3	164.3
1961	28.724	29.933	154.0	160.4
1962	29.263	29.227	156.6	156.2
1963	29.301	29.796	157.0	159.8
1964	44.110	42.940	236.0	229.8
1965	58.734	50.461	307.6	264.3
1966	69.465	63.159	352.1	320.4
1967	51.127	50.388	259.1	255.5
1968	56.101	51.125	277.2	252.5
1969	66.563	63.863	316.4	303.1
1970	64.195	61.275	294.7	281.3
1971	49.266	49.050	219.3	218.5
1972	48.556	49.140	206.7	209.1
1973	80.776	78.445	302.2	293.6
1974	93.272	90.156	300.7	290.3
1975	55.942	55.543	162.6	161.2
1976	63.611	64.072	176.2	177.6
1977	59.290	60.294	155.2	157.7
1978	61.886	62.172	149.7	150.6
1979	89.830	88.466	193.8	190.3
1980	99.174	96.758	187.7	183.2
1981	78.949	78.655	136.7	136.1
1982	67.057	65.820	113.8	111.6
1983	72.173	71.901	121.0	120.4
1984	62.449	61.320	102.2	100.2
1985	64.281	60.988	105.6	100.2
1986	62.287	61.649	105.4	104.3
1987	81.086	77.837	133.0	128.1
1988	117.937	114.600	186.9	181.5
1989	129.113	124.911	195.2	188.8
1990	120.879	119.085	176.0	173.6
1991	106.066	104.875	154.2	152.5
1992	103.573	102.721	149.7	148.6
1993	86.713	85.283	123.7	121.6
1994	104.903	107.052	147.1	150.5
1995	133.198	134.717	180.9	183.1
1996	103.894	105.872	138.3	140.6
1997	103.224	103.579	137.2	137.6
1998	74.974	75.077	102.2	102.2
1999	71.380	72.111	96.3	97.3
2000	82.294	83.971	105.0	107.2
2001	71.566	72.567	90.3	91.5
2002	70.647	71.672	91.5	92.7
2003	80.734	81.050	99.0	99.4
2004	130.106	128.972	150.2	149.0
2005	167.087	168.227	179.3	180.7
2006	305.295	308.935	313.4	317.5
2007	323.246	322.172	316.6	316.0
2008	315.316	313.358	279.7	277.8
ENE-MAR/ JAN-MAR / 2009	155.822	156.728	155.1	156.3
ENE-MAR/ JAN-MAR / 2008	352.142	353.411	325.7	325.5
VARIACION %				
ENE-MAR/ JAN-MAR 2009/2008	-55.8	-55.7	-52.4	-52.0

(1) Deflactor: Índice de Precios al por Mayor de Estados Unidos (PPI, all commodities), base febrero 2009=100.
Deflator: U.S. Producer Price Index (PPI, all Commodities). February 2009 = 100.

N.D. Información no disponible / Not Available

BOLSA DE METALES DE LONDRES
PRECIO PROMEDIO DEL COBRE REFINADO, NOMINAL
LONDON METAL EXCHANGE - REFINED COPPER AVERAGE PRICE, NOMINAL
(Centavos de dólar por libra. ¢US\$/lb)
PRECIO CONTADO VENDEDOR / SELLER SPOT PRICE

COBRE GRADO "A" / A GRADE COPPER

	PERIODO / PERIOD	ANUAL(1) / ANNUAL	12 MESES / 12 MONTHS
2004	130.106	-	-
2005	167.087	-	-
2006	305.295	-	-
2007	323.246		
2008	315.316		
ENE/ JAN / 2006	214.746	214.746	172.885
FEB	225.998	220.235	179.084
MAR	231.461	224.269	185.932
ABR/ APR	289.745	238.642	196.010
MAY	364.954	264.395	213.878
JUN	326.478	275.322	228.367
JUL	349.815	286.036	243.796
AGO/ AUG	349.069	294.291	259.170
SEP	344.837	299.907	273.658
OCT	340.212	304.109	286.875
NOV	318.838	305.500	297.761
DIC/ DEC	302.778	305.295	305.295
ENE/ JAN / 2007	257.171	257.171	308.626
FEB	257.479	257.318	311.115
MAR	292.680	269.474	316.775
ABR/ APR	352.281	288.430	321.365
MAY	348.457	300.551	319.996
JUN	339.100	307.027	321.022
JUL	361.691	315.208	322.168
AGO/ AUG	340.807	318.540	321.450
SEP	346.952	321.547	321.525
OCT	363.256	326.072	323.694
NOV	316.005	325.125	323.447
DIC/ DEC	298.812	323.246	323.246
ENE/ JAN / 2008	320.283	320.283	328.756
FEB	357.780	338.595	336.799
MAR	382.800	352.142	344.178
ABR/ APR	393.942	363.089	347.896
MAY	380.235	366.387	350.416
JUN	374.694	367.782	353.382
JUL	381.655	369.938	355.230
AGO/ AUG	346.304	367.125	355.783
SEP	317.100	361.332	353.118
OCT	223.426	346.441	340.406
NOV	168.600	331.176	328.855
DIC/ DEC	139.343	315.316	315.316
ENE/ JAN / 2009	146.088	146.088	301.397
FEB	150.353	148.169	284.149
MAR	170.086	155.822	266.958
PROMEDIO A:/ AVERAGE UP TO:			
MAR/Mar/ 2009	170.086	155.822	266.958
MAR/Mar/ 2008	382.800	352.142	344.178
VARIACION %/ % VARIATION			
MAR/Mar 2009/2008	-55.6	-55.8	-22.4

(1) Precio promedio a la fecha./ Up to date average price.

Fuente / Source: Elaborado por la Comisión Chilena del Cobre

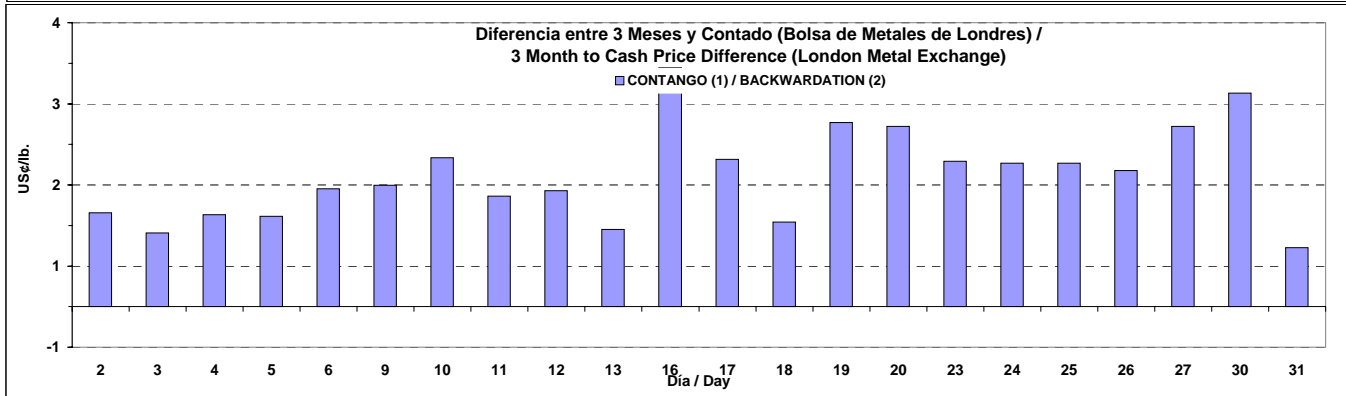
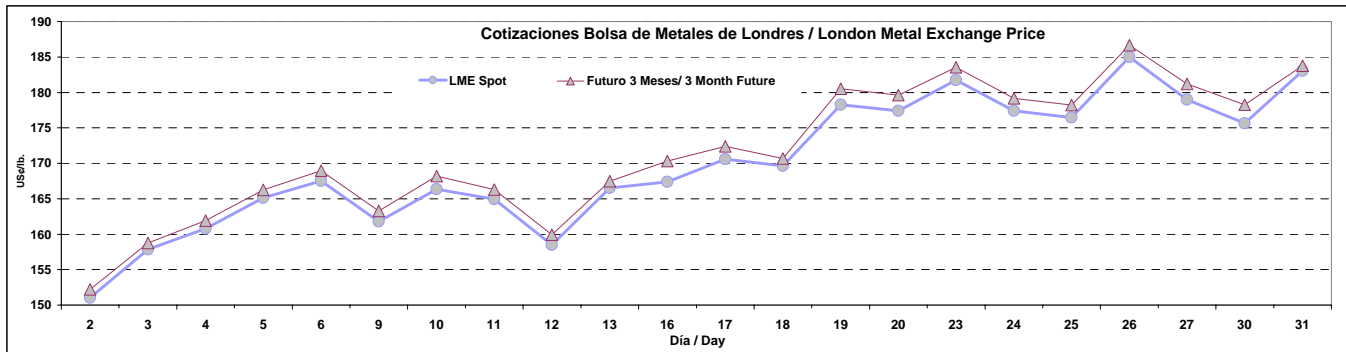
PRECIOS DIARIOS DEL COBRE EN BOLSAS - CATODOS GRADO "A"
EXCHANGES DAILY COPPER PRICES - A GRADE CATHODES
MARZO/ MARCH 2009

DIA DAY	BOLSA DE METALES DE LONDRES PRECIOS DIARIOS LONDON METAL EXCHANGE REFINED COPPER DAILY PRICES								COMEX NEW YORK MERCANTILE EXCHANGE					
	Dólar por tonelada métrica.(US\$/T.M. - US\$/MT)				Centavos de dólar por libra. ¢US\$/lb				Centavos de dólar por libra. ¢US\$/lb					
	CONTADO/ SPOT	FUTURO/ FUTURE (3m)	FUTURO/ FUTURE (15m)	FUTURO/ FUTURE (27m)	CONTADO/ SPOT	FUTURO/ FUTURE (3m)	FUTURO/ FUTURE (15m)	FUTURO/ FUTURE (27m)	1° Pos 1 Pos	HG HG	4° Pos 4 Pos	HG HG	16° Pos HG 16 Pos	24° Pos HG 24 Pos
2	3,330.00	3,355.50	3,450.00	3,520.00	151.046	152.203	156.489	159.665	150.75		152.25		155.80	157.40
3	3,480.00	3,500.00	3,585.00	3,650.00	157.850	158.757	162.613	165.561	159.60		160.85		163.90	165.10
4	3,545.00	3,570.00	3,645.00	3,700.00	160.799	161.933	165.334	167.829	168.55		169.75		172.05	172.85
5	3,640.50	3,665.00	3,735.00	3,780.00	165.130	166.242	169.417	171.458	164.60		165.75		168.20	169.00
6	3,693.00	3,725.00	3,795.00	3,850.00	167.512	168.963	172.138	174.633	168.05		169.30		172.00	172.80
9	3,567.00	3,600.00	3,680.00	3,735.00	161.796	163.293	166.922	169.417	162.95		164.45		168.30	169.90
10	3,667.50	3,708.00	3,795.00	3,855.00	166.355	168.192	172.138	174.860	167.45		168.85		172.45	174.05
11	3,636.00	3,666.00	3,750.00	3,810.00	164.926	166.287	170.097	172.819	161.60		162.95		166.60	168.20
12	3,494.00	3,525.50	3,615.00	3,675.00	158.485	159.914	163.974	166.695	161.75		162.95		167.10	169.10
13	3,671.00	3,692.00	3,775.00	3,840.00	166.514	167.466	171.231	174.180	165.85		166.70		170.60	172.60
16	3,690.00	3,755.00	3,840.00	3,900.00	167.376	170.324	174.180	176.901	173.95		175.00		178.15	179.75
17	3,761.00	3,801.00	3,875.00	3,930.00	170.596	172.411	175.767	178.262	171.75		172.65		175.60	176.80
18	3,740.00	3,763.00	3,840.00	3,895.00	169.644	170.687	174.180	176.674	170.90		172.05		175.60	177.20
19	3,930.00	3,980.00	4,055.00	4,110.00	178.262	180.530	183.932	186.427	179.80		181.10		184.35	185.95
20	3,911.00	3,960.00	4,040.00	4,095.00	177.400	179.623	183.251	185.746	178.75		179.85		183.40	185.00
23	4,006.50	4,046.00	4,130.00	4,190.00	181.732	183.524	187.334	190.055	183.20		184.50		188.05	189.65
24	3,911.00	3,950.00	4,040.00	4,110.00	177.400	179.169	183.251	186.427	179.85		181.00		185.10	187.10
25	3,890.00	3,929.00	4,025.00	4,095.00	176.447	178.216	182.571	185.746	179.70		180.70		184.80	186.80
26	4,078.00	4,115.00	4,200.00	4,275.00	184.975	186.653	190.509	193.911	184.95		185.90		189.85	191.85
27	3,946.00	3,995.00	4,090.00	4,165.00	178.988	181.210	185.519	188.921	183.35		184.00		187.90	189.90
30	3,872.00	3,930.00	4,025.00	4,100.00	175.631	178.262	182.571	185.973	176.10		177.55		181.40	183.15
31	4,035.00	4,051.00	4,145.00	4,220.00	183.025	183.750	188.014	191.416	183.90		185.40		188.90	190.50
PROMEDIO / AVERAGE	3,749.75	3,785.55	3,869.55	3,931.82	170.086	171.710	175.520	178.344	171.698		172.886		176.368	177.939

FUENTE / SOURCE: Reuters

NOTA / NOTE: Comex tiene precios desde la posición 1 (mes actual) a la 24 (23 meses en adelante) / Comex prices start at 1st position (current month) and ends at 24th position (23 months ahead).

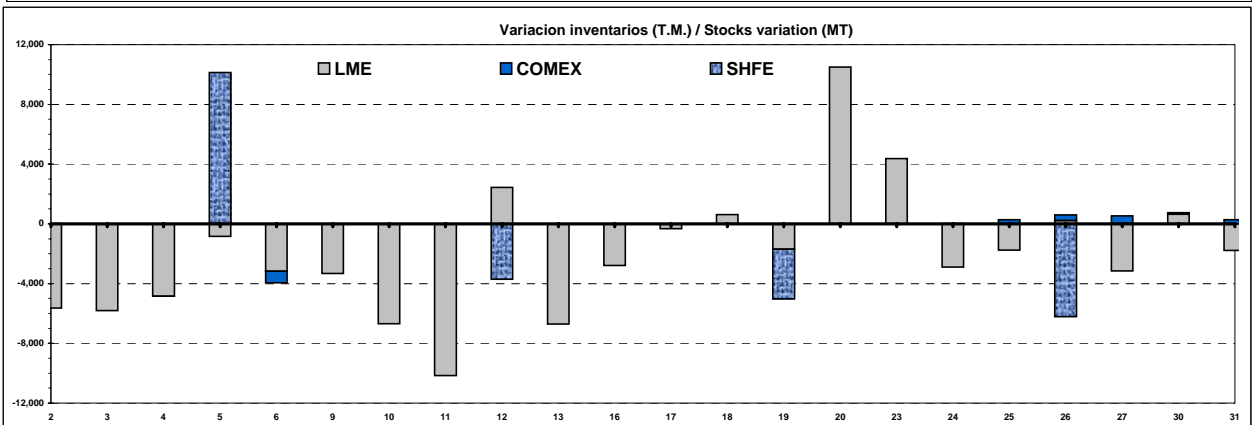
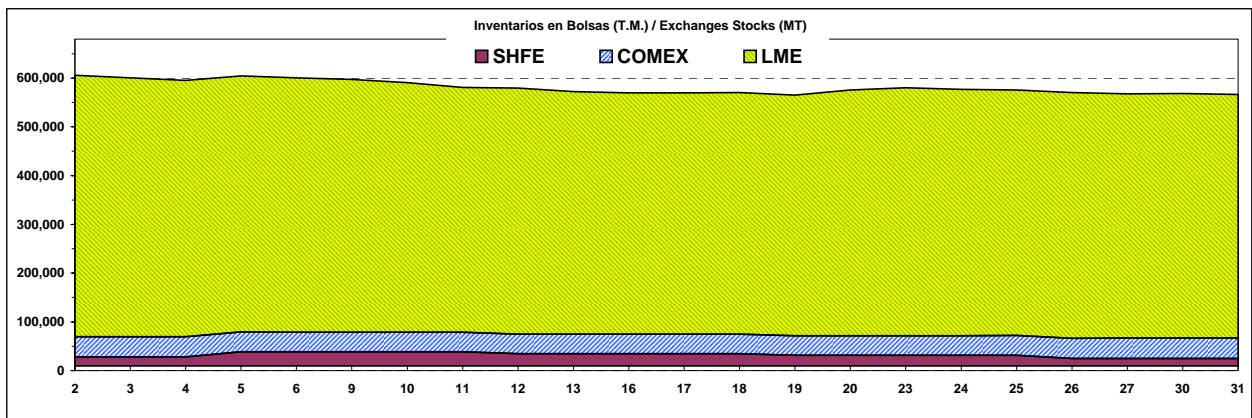
N.D. Información no disponible/ No data available, No trade /suspended



(1) Contango: Precio futuro mayor que precio contado./ Future price higher than spot price
(2) Backwardation: Precio futuro menor que precio contado./ Future price lower than spot price

STOCKS DE COBRE EN BOLSAS - CATODOS GRADO"A"
COPPER WAREHOUSE STOCKS - A GRADE CATHODES
MARZO / MARCH 2009
T.M. / M.T.

Stocks fin período	BOLSA DE METALES DE LONDRES/ LONDON METAL EXCHANGE		BOLSA DE NUEVA YORK / NEW YORK MERCANTILE EXCHANGE		BOLSA DE SHANGAI / SHANGHAI FUTURE EXCHANGE		TOTAL	VARIACION
End of period stocks	LME		COMEX		SHFE		TOTAL	VARIACION
T.M./MT	TOTAL	Variación/ Variation	TOTAL	Variación/ Variation	TOTAL	Variación/ Variation	TOTAL	VARIACION
31.12.2008	339,775		31,311		17,822		388,908	
27.02.2009	542,300	202,525	41,100	9,789	28,332	10,510	611,732	222,824
2	536,675	-5,625	41,122	22	28,332	0	606,129	-5,603
3	530,875	-5,800	41,122	0	28,332	0	600,329	-5,800
4	526,025	-4,850	41,113	-9	28,332	0	595,470	-4,859
5	525,200	-825	41,113	0	38,468	10,136	604,781	9,311
6	522,025	-3,175	40,316	-797	38,468	0	600,809	-3,972
9	518,700	-3,325	40,316	0	38,468	0	597,484	-3,325
10	512,025	-6,675	40,316	0	38,468	0	590,809	-6,675
11	501,875	-10,150	40,316	0	38,468	0	580,659	-10,150
12	504,325	2,450	40,316	0	34,735	-3,733	579,376	-18,108
13	497,625	-6,700	40,316	0	34,735	0	572,676	-6,700
16	494,850	-2,775	40,316	0	34,735	0	569,901	-2,775
17	494,525	-325	40,316	0	34,735	0	569,576	-325
18	495,150	625	40,316	0	34,735	0	570,201	625
19	493,450	-1,700	40,316	0	31,408	-3,327	565,174	-4,402
20	503,950	10,500	40,316	0	31,408	0	575,674	10,500
23	508,325	4,375	40,316	0	31,408	0	580,049	4,375
24	505,425	-2,900	40,334	18	31,408	0	577,167	-2,882
25	503,675	-1,750	40,608	274	31,408	0	575,691	-1,476
26	503,900	225	40,993	385	25,181	-6,227	570,074	-5,617
27	500,750	-3,150	41,525	532	25,181	0	567,456	-2,618
30	501,400	650	41,623	98	25,181	0	568,204	748
31	499,625	-1,775	41,899	276	25,181	0	566,705	-1,499



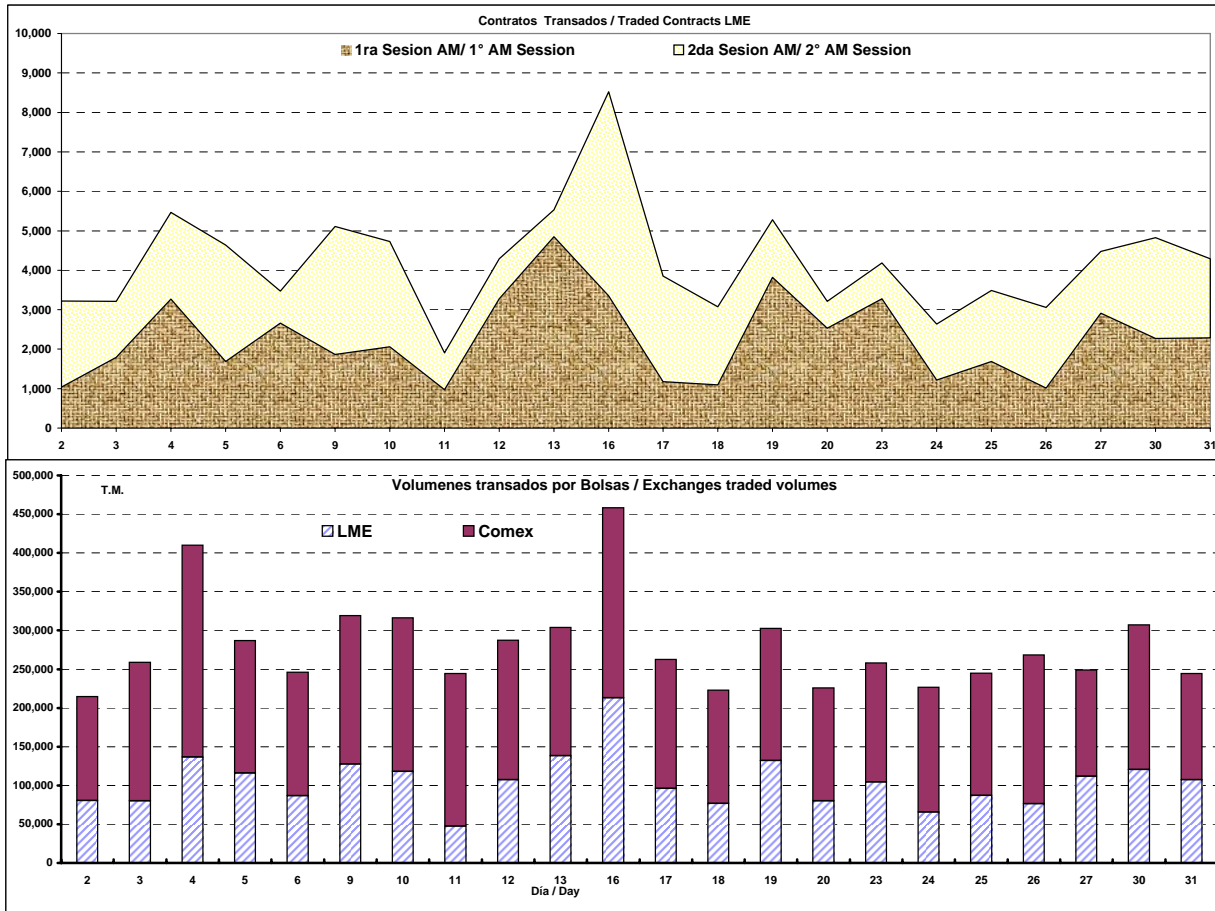
VOLUMENES DE COBRE TRANSADO EN BOLSAS - CATODOS GRADO "A"
COPPER RING VOLUME - A GRADE CATHODES
MARZO/ MARCH 2009
T.M. / M.T.

DIA DAY	BOLSA DE METALES DE LONDRES/ LONDON METAL EXCHANGE						NEW YORK MERCANTILE EXCHANGE COMEX			
	1ra. Sesión AM/ Morning Ring Sessions			2da. Sesión AM / Morning Ring sessions			Total contratos	TOTAL T.M.	Total contratos	TOTAL MT.
	1°	2°	Kerb	1°	2°	Kerb	Total contratos	TOTAL MT	Total contratos	TOTAL MT
2	809	230		520	1,225	432	3,216	80,400	11,840	134,263
3	1,179	616		176	610	630	3,211	80,275	15,758	178,693
4	2,664	521	80	870	516	818	5,469	136,725	24,107	273,369
5	1,054	630		1,250	441	1,265	4,640	116,000	15,081	171,016
6	2,307	251	100	294	240	279	3,471	86,775	14,038	159,188
9	1,706	161		1,650	950	644	5,111	127,775	16,889	191,518
10	1,670	390		294	630	1,743	4,727	118,175	17,463	198,027
11	701	275		340	360	228	1,904	47,600	17,367	196,938
12	3,208	68		63	120	830	4,289	107,225	15,901	180,314
13	4,142	712		484		190	5,528	138,200	14,622	165,811
16	2,956	395		1,940	1,173	2,058	8,522	213,050	21,611	245,064
17	618	560		604	806	1,265	3,853	96,325	14,680	166,468
18	914	179		360	360	1,620	3,073	76,825	12,899	146,272
19	3,708	115		290	650	520	5,283	132,075	15,026	170,392
20	2,508	25		175	70	434	3,212	80,300	12,851	145,728
23	2,410	869		144	192	570	4,185	104,625	13,519	153,303
24	979	234	3	474	232	710	2,632	65,800	14,181	160,810
25	765	853	68	310	764	727	3,487	87,175	13,909	157,725
26	883	130		256	836	951	3,056	76,400	16,939	192,085
27	1,566	1,346		684	40	843	4,479	111,975	12,096	137,166
30	1,484	786		966	442	1,145	4,823	120,575	16,459	186,642
31	1,534	491	264	787	480	735	4,291	107,275	20,075	137,166

FUENTE / SOURCE: Reuters

N.D. Información no disponible.

Nota: 1 Contrato Bolsa de Metales de Londres 25 Toneladas. Comex 1 Contrato 25.000 Libras 11.34 Toneladas



Fuente / Source: Elaborado por la Comisión Chilena del Cobre

VOLUMENES E INTERESES ABIERTOS DE FUTUROS Y OPCIONES DE COBRE BOLSA DE METALES DE LONDRES

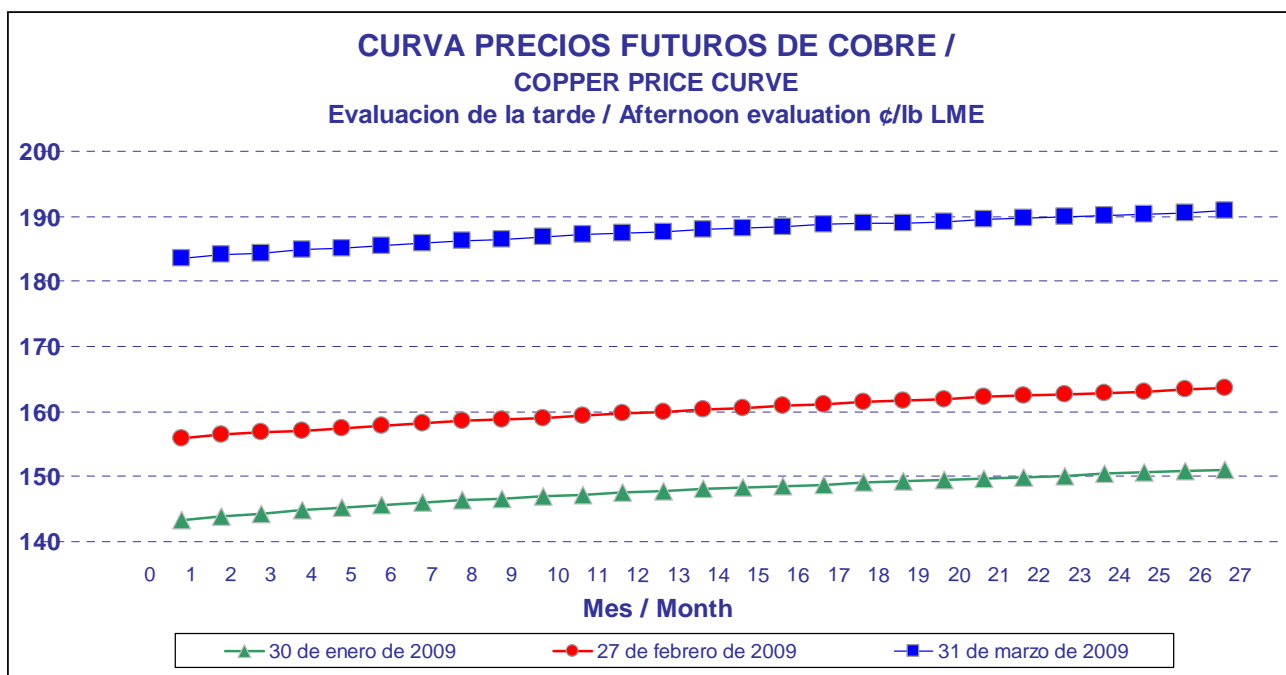
LONDON METAL EXCHANGE COPPER FUTURES & OPTION VOLUME AND OPEN INTEREST

(Numero de contratos / Contract number)

MARZO / MARCH 2009

Dia / Day	VOLUMEN / VOLUME			INTERESES ABIERTOS / OPEN INTEREST	
	Futuros / Futures	Opciones / Options	TOTAL/ Total	Futuros / Futures	Opciones / Options
02	72,740	3,588	76,328	240,019	N.D.
03	101,332	3,719	105,051	242,034	N.D.
04	147,832	6,093	153,925	240,953	N.D.
05	113,347	4,334	117,681	241,667	N.D.
06	82,509	8,207	90,716	239,833	N.D.
09	83,279	2,734	86,013	241,525	N.D.
10	113,929	5,116	119,045	240,906	N.D.
11	79,495	4,702	84,197	241,699	N.D.
12	98,250	12,084	110,334	244,168	N.D.
13	95,389	3,755	99,144	243,465	N.D.
16	129,118	941	130,059	241,420	N.D.
17	122,080	11,187	133,267	235,433	N.D.
18	88,346	2,356	90,702	237,921	N.D.
19	112,170	3,310	115,480	239,472	N.D.
20	248,237	21,894	270,131	241,470	N.D.
23	87,768	11,066	98,834	242,697	N.D.
24	81,251	11,536	92,787	245,476	N.D.
25	85,612	1,725	87,337	246,057	N.D.
26	86,874	3,742	90,616	247,875	N.D.
27	75,801	1,236	77,037	248,031	N.D.
30	86,873	2,190	89,063	247,751	N.D.
31	91,945	2,333	94,278	246,864	N.D.
TOTAL/TOTAL	2,284,177	127,848	2,412,025		

N.D. Información no disponible/ No data available, No trade /suspended
Fuente / Source: Elaborado por la Comisión Chilena del Cobre



PRECIO PROMEDIO DEL COBRE EN ESTADOS UNIDOS, NOMINAL

(Centavos de dólar por libra. ¢US\$/lb)

COPPER AVERAGE PRICE IN USA, NOMINAL

	PRODUCTORES NORTEAMERICANOS <u>North American Producers</u>	COMEX COBRE GRADO "A" <u>A Grade Copper</u>	PRECIO CHATARRA <u>Scrap Price</u>
	W.B.(1)	1er.MES / First Month	Nº 2
2004	133.945	128.972	19.542
2005	173.493	168.227	17.050
2006	314.751	308.935	41.483
2007	328.002	322.172	36.908
2008	319.163	313.358	30.867
ENE/ JAN / 2006	224.000	218.258	15.250
FEB	230.905	225.079	11.750
MAR	238.235	232.409	20.200
ABR/ APR	302.679	296.853	32.750
MAY	381.687	375.861	37.600
JUN	345.474	339.648	44.250
JUL	368.147	362.321	75.000
AGO/ AUG	358.887	353.061	75.000
SEP	352.184	346.358	63.750
OCT	345.226	339.400	50.000
NOV	322.386	316.560	41.000
DIC/ DEC	307.200	301.413	31.250
ENE/ JAN / 2007	264.131	258.305	20.000
FEB	265.487	259.661	17.250
MAR	298.096	292.270	20.000
ABR/ APR	356.666	350.840	31.000
MAY	354.074	348.248	37.400
JUN	344.590	338.764	41.750
JUL	367.421	361.595	54.000
AGO/ AUG	342.609	336.783	56.000
SEP	351.442	345.616	46.250
OCT	364.713	358.887	58.000
NOV	318.802	312.924	37.500
DIC/ DEC	307.996	302.170	23.750
ENE/ JAN / 2008	326.000	320.171	25.000
FEB	364.781	358.955	31.250
MAR	386.934	381.108	38.250
ABR/ APR	399.765	393.939	33.000
MAY	383.247	377.421	38.750
JUN	374.800	368.974	36.250
JUL	381.765	375.939	41.600
AGO/ AUG	349.211	343.640	26.500
SEP	320.119	314.293	16.250
OCT	224.391	218.565	30.800
NOV	174.323	168.497	31.750
DIC/ DEC	144.624	138.798	21.000
ENE/ JAN / 2009	153.674	147.848	17.500
FEB	156.465	150.639	13.250
MAR	177.524	171.698	11.000
Ene-Mar/Jan-Mar/ 2009	162.554	156.728	13.917
Ene-Mar/Jan-Mar/ 2008	359.238	353.411	31.500
VARIACION % / % VARIATION			
Ene-Mar/Jan-Mar/ 2009-2008	-54.8	-55.7	-55.8

(1) Cotización/ Quotation Producer Delivered-Metals Week.

FUENTE/ SOURCE: Metals Week,Reuters.

PRECIOS PROMEDIOS METALES PRECIOSOS, NOMINALES

(US\$ / onza troy)

PRECIOUS METALS AVERAGE PRICES, NOMINAL

	PLATA / SILVER		ORO / GOLD			PLATINO / PLATINUM
	REINO UNIDO (1)	ESTADOS UNIDOS (2)	REINO UNIDO/ UK		ESTADOS UNIDOS (2)	REINO UNIDO (3)
	UK	USA	INICIAL / INITIAL	FINAL / LAST	USA	UK
2004	6.65	6.69	409.3	409.2	409.3	845.2
2005	7.31	7.34	444.9	444.9	444.8	896.9
2006	11.57	11.57	604.7	604.3	604.0	1,141.7
2007	13.39	13.41	696.9	696.7	696.9	1,304.8
2008	15.02	15.00	872.5	871.7	871.1	1,576.4
ENE/ JAN / 2006	9.15	9.18	549.4	549.9	549.3	1,029.0
FEB	9.53	9.52	555.5	555.0	555.0	1,041.8
MAR	10.38	10.38	557.2	557.1	557.1	1,041.1
ABR/ APR	12.61	12.64	611.9	610.7	610.4	1,101.4
MAY	13.45	13.38	676.8	675.4	674.0	1,264.9
JUN	10.80	10.77	597.9	596.1	596.1	1,188.5
JUL	11.23	11.21	633.1	633.7	634.9	1,228.8
AGO/ AUG	12.18	12.25	631.6	632.6	632.1	1,234.0
SEP	11.68	11.60	600.2	598.2	596.8	1,183.6
OCT	11.56	11.62	586.6	585.8	585.8	1,082.5
NOV	12.93	12.98	626.8	627.8	627.1	1,183.0
DIC/ DEC	13.36	13.30	629.5	629.8	629.4	1,121.5
ENE/ JAN / 2007	12.84	12.87	630.4	631.2	630.9	1,148.4
FEB	13.91	13.95	665.1	664.7	664.4	1,204.6
MAR	13.18	13.16	655.9	654.9	654.9	1,218.8
ABR/ APR	13.74	13.73	680.0	679.4	679.2	1,278.4
MAY	13.15	13.19	668.3	666.9	667.9	1,301.3
JUN	13.14	13.15	655.7	655.5	655.4	1,286.2
JUL	12.91	12.95	665.3	665.3	665.8	1,303.1
AGO/ AUG	12.36	12.33	664.5	665.4	665.2	1,264.7
SEP	12.83	12.93	710.6	712.7	714.8	1,307.7
OCT	13.67	13.72	754.5	754.6	754.6	1,410.7
NOV	14.70	14.67	808.3	806.2	805.9	1,448.7
DIC/ DEC	14.30	14.31	803.6	803.2	803.2	1,484.9
ENE/ JAN / 2008	15.96	16.06	887.8	889.6	890.5	1,585.8
FEB	17.57	17.67	924.3	922.3	923.3	1,999.7
MAR	19.51	19.22	971.1	968.4	966.3	2,046.5
ABR/ APR	17.50	17.51	911.6	909.7	909.7	1,988.4
MAY	17.05	17.05	889.1	888.7	887.6	2,054.7
JUN	16.97	17.04	889.5	889.5	889.5	2,038.2
JUL	18.03	18.06	941.2	939.8	940.2	1,904.4
AGO/ AUG	14.69	14.58	840.4	839.0	838.3	1,488.5
SEP	12.37	12.19	824.9	829.9	830.3	1,223.0
OCT	10.44	10.43	812.8	806.6	806.6	912.6
NOV	9.87	9.87	757.9	760.9	754.9	840.3
DIC/ DEC	10.29	10.32	819.9	816.1	816.1	834.8
ENE/ JAN / 2009	11.29	11.40	857.7	858.7	860.0	949.8
FEB	13.41	13.44	939.7	943.2	943.2	1,035.7
MAR	13.12	13.12	925.9	924.2	924.2	1,081.2
Ene-Mar/Jan-Mar/ 2009	12.61	12.65	907.78	908.68	909.12	1,022.21
Ene-Mar/Jan-Mar/ 2008	17.68	17.65	927.71	926.78	926.67	1,877.30
VARIACION % / % VARIATION						
Ene-Mar/Jan-Mar/ 2009-2008	-28.7	-28.3	-2.1	-2.0	-1.9	-45.5

(1) Cotización London Spot.

(2) Cotización Handy & Harman N.Y.

(3) Promedio Cotización London fixing P.M. / Average

FUENTE/ SOURCE: Metals Week.Reuters.

PRECIOS DIARIOS ORO: MARZO 2009

(US\$ / onza troy)

GOLD DAILY PRICES: MARCH 2009

DIA/ DAY	REINO UNIDO/ UK (1)		COMEX	EE.UU. / USA	EE.UU / USA
	INICIAL / INITIAL	FINAL / LAST	1°Pos / 1 St Pos (US\$/oz)		Handy & Harman (2)
1					
2	949.50	937.25		939.00	937.25
3	924.75	913.75		912.90	913.75
4	911.00	908.50		906.00	908.50
5	913.25	913.00		927.00	913.00
6	937.75	936.00		942.10	936.00
7					
8					
9	934.75	923.75		917.70	923.75
10	911.50	901.50		895.60	901.50
11	900.00	899.50		910.40	899.50
12	914.50	925.25		923.70	925.25
13	920.00	928.00		929.80	928.00
14					
15					
16	923.00	919.50		921.60	919.50
17	920.00	915.50		916.40	915.50
18	910.75	893.25		888.70	893.25
19	937.25	956.50		958.30	956.50
20	957.00	954.00		955.80	954.00
21					
22					
23	952.75	949.25		952.10	949.25
24	928.75	923.75		923.30	923.75
25	921.25	929.00		935.40	929.00
26	935.50	938.25		939.60	938.25
27	927.00	924.00		923.00	924.00
28					
29					
30	923.00	928.00		915.50	928.00
31	918.50	916.50		922.60	916.50
PROMEDIO MES/ MONTH AVG	925.989	924.273		925.295	924.273

(1) Cotización London

(2) Cotización Handy & Harman N.Y.

Fuente / Source: Reuters. Elaborado por la Comisión Chilena del Cobre

PRECIOS DIARIOS PLATA MARZO 2009

(US\$ / onza troy)

SILVER DAILY PRICES: MARCH 2009

DIA/ DAY	REINO UNIDO/ UK (1)	COMEX EE.UU./ USA 1 Pos / 1 St Pos (US\$/oz)	Handy & Harman N.Y. (2)
1			
2	13.1400	13.0500	12.9300
3	12.6800	12.6950	12.5450
4	12.8700	12.9000	12.9550
5	13.1500	13.1050	13.1900
6	13.4600	13.3230	13.3650
7			
8			
9	13.3600	12.9500	13.1700
10	12.7100	12.5600	12.5900
11	12.6200	12.8150	12.8400
12	12.8400	12.9580	13.0700
13	13.1100	13.2300	13.2000
14			
15			
16	13.0600	12.9050	12.9250
17	12.8600	12.6850	12.7100
18	12.6100	11.9500	12.2500
19	13.1300	13.5000	13.5000
20	13.6500	13.8270	13.6250
21			
22			
23	13.7600	13.8620	13.8650
24	13.5100	13.3440	13.36
25	13.1600	13.4240	13.4450
26	13.6000	13.6070	13.6450
27	13.2200	13.2510	13.3400
28			
29			
30	12.9600	13.0230	13.1050
31	13.1100	12.9750	12.91
PROMEDIO MES/ MONTH AVG	13.11682	13.08814	13.11500

(1) Cotización London Spot.

(2) Cotización Handy & Harman N.Y.

Fuente / Source: Reuters. Elaborado por la Comisión Chilena del Cobre

PRECIOS PROMEDIOS OTROS METALES, NOMINALES

(Centavos de dólar por libra. ¢US\$/lb)

OTHER METALS AVERAGE PRICES, NOMINAL

	ALUMINIO/ALUMINIUM		PLOMO/ LEAD		ZINC		ESTAÑO/ TIN		NIQUEL/NICKEL		MOLIBDENO/ MOLYBDENUM	
	B.M.L/ LME HG SETTL.	EE.UU./USA(1)	B.M.L/ LME SETTL.	SHG SETTL.	B.M.L/ LME SETTL.	EE.UU./USA(2)	B.M.L/ LME SETTL.	EE.UU./USA(2)	B.M.L/ LME SETTL.	EE.UU./USA(2)	OXIDO/ OXIDE (US\$/lb) EE.UU./ USA(2)	
2004	77.8	84.0	40.2	47.5	409.4	360.9	627.3	634.1	668.8	681.4	16.40	31.73
2005	86.1	91.1	44.3	62.7	360.9	419.5	668.8	681.4	1100.2	1098.2	24.75	30.23
2006	116.6	121.4	58.5	148.6	419.5	679.5	1688.7	1690.5	957.6	987.4	28.73	
2007	119.7	122.2	117.0	147.1	679.5	864.5	957.6	987.4				
2008	116.7	120.5	94.8	85.0	864.5							
ENE/ JAN / 2006	107.9	111.8	57.0	94.8	340.1	660.2	640.8	22.39				
FEB	111.4	116.9	57.9	100.7	375.9	679.4	694.4	23.50				
MAR	110.2	114.8	54.1	109.6	383.6	675.7	694.9	22.84				
ABR/ APR	118.9	123.7	53.1	139.9	420.4	813.9	818.4	22.95				
MAY	129.8	135.5	52.9	161.7	421.3	956.0	942.5	25.53				
JUN	112.4	119.3	43.7	146.3	380.7	941.4	966.4	25.18				
JUL	114.0	119.6	47.7	151.5	401.5	1,205.9	1,175.0	24.68				
AGO/ AUG	111.6	117.0	53.3	151.8	404.7	1,394.5	1,380.8	26.84				
SEP	112.2	117.0	60.9	154.4	428.9	1,366.7	1,363.4	27.14				
OCT	120.4	124.1	69.5	173.4	470.3	1,483.4	1,482.2	25.60				
NOV	122.6	127.2	73.7	198.8	480.0	1,456.7	1,453.5	25.54				
DIC/ DEC	127.6	130.2	78.3	199.8	526.5	1,568.1	1,565.7	24.78				
ENE/ JAN / 2007	127.4	129.5	75.6	171.8	531.1	1,669.7	1,617.7	25.01				
FEB	128.5	129.5	80.7	150.1	606.3	1,868.1	1,830.9	25.45				
MAR	125.3	129.0	86.8	148.4	649.1	2,101.3	2,123.8	27.96				
ABR/ APR	127.7	130.8	90.8	161.4	656.1	2,280.1	2,313.9	28.04				
MAY	126.8	129.3	95.3	173.7	665.7	2,366.8	2,373.7	31.64				
JUN	121.5	123.4	110.0	163.4	663.1	1,892.3	1,849.1	32.69				
JUL	124.0	126.2	139.9	160.9	692.5	1,516.2	1,528.5	31.53				
AGO/ AUG	114.1	117.4	141.5	147.5	708.5	1,254.3	1,268.0	31.69				
SEP	108.5	111.3	146.4	130.7	698.9	1,339.8	1,329.1	31.60				
OCT	110.8	113.5	168.7	135.0	747.8	1,408.7	1,422.5	31.86				
NOV	113.7	116.4	151.0	115.3	775.1	1,388.5	1,417.8	32.95				
DIC/ DEC	108.0	110.7	117.8	106.7	759.8	1,179.0	1,210.5	32.38				
ENE/ JAN / 2008	110.9	113.6	118.3	106.1	764.0	1,256.0	1,268.6	33.03				
FEB	126.0	128.6	139.7	110.6	804.1	1,268.0	1,296.2	33.35				
MAR	136.3	139.9	136.5	113.9	921.4	1,416.4	1,429.6	33.40				
ABR/ APR	134.2	138.6	128.0	102.7	1,001.8	1,304.7	1,345.2	32.85				
MAY	131.7	135.8	101.4	99.0	1,100.8	1,167.3	1,232.7	32.67				
JUN	134.2	137.4	84.5	85.9	1,033.4	1,022.8	1,048.3	33.35				
JUL	139.3	142.6	88.2	84.0	1,063.0	914.5	948.4	33.67				
AGO/ AUG	125.4	129.0	87.3	78.2	945.4	858.6	878.8	33.84				
SEP	114.6	119.2	84.7	78.7	862.2	807.2	854.1	32.94				
OCT	96.2	101.9	67.1	59.1	680.1	550.7	569.4	26.12				
NOV	84.0	88.1	58.6	52.3	657.4	485.4	510.2	10.00				
DIC/ DEC	67.6	71.5	43.7	49.9	540.8	439.4	467.3	9.60				
ENE/ JAN / 2009	64.1	67.6	51.4	53.9	546.5	512.9	534.6	9.33				
FEB	60.3	62.9	49.9	50.4	524.2	472.1	497.2	8.83				
MAR	60.6	63.8	56.2	55.2	509.2	439.8	472.9	8.42				
Ene-Mar/Jan-Mar/ 2009	61.7	64.8	52.5	53.2	526.6	474.9	501.6	8.9				
Ene-Mar/Jan-Mar/ 2008	124.4	127.4	131.5	110.2	829.8	1,313.5	1,331.5	33.3				
VARIACION % / % VARIATION												
Ene-Mar/Jan-Mar/ 2009-2008	-50.4	-49.1	-60.1	-51.8	-36.5	-63.8	-62.3	-73.4				

(1) Mercado / MW US Market.

(2) Comerciantes / MW Dealer.

FUENTE/ SOURCE: Metals Week, Reuters.

BOLSA DE METALES DE LONDRES
PRECIOS DIARIOS OTROS METALES: MARZO 2009
(Centavos de dólar por libra. ¢US\$/lb)
OTHER METALS DAILY PRICES LME: MARCH 2009
¢US\$/lb.

DIA/DAY	ESTAÑO/ TIN		PLOMO/ LEAD		ZINC		ALUMINIO/ ALUMINIUM		NIQUEL/ NICKEL	
	Contado/ Spot	Futuro/ Future	Contado/ Spot	Futuro/ Future	Contado/ Spot	Futuro/ Future	Contado/ Spot	Futuro/ Future	Contado/ Spot	Futuro/ Future
1										
2	501.22	485.57	46.45	46.86	48.92	50.12	57.63	59.44	435.68	439.99
3	490.33	483.30	47.26	47.72	50.12	51.26	58.31	59.92	438.85	441.35
4	483.08	483.53	50.08	50.12	51.98	53.16	59.06	60.44	442.71	447.02
5	503.49	492.15	52.64	52.93	53.82	55.16	59.06	60.83	443.84	447.02
6	514.83	510.29	53.98	54.43	55.57	56.50	58.63	60.28	443.61	447.24
7										
8										
9	511.43	494.87	55.16	55.61	53.62	55.20	57.22	59.06	434.32	438.85
10	505.76	498.95	56.70	56.97	56.16	57.20	58.15	59.65	443.61	445.43
11	501.45	491.01	58.06	58.29	55.18	56.34	59.01	60.67	442.48	447.02
12	498.95	478.54	55.82	56.25	53.86	55.09	59.10	60.65	432.73	438.85
13	489.88	477.41	57.45	58.06	55.18	56.31	60.56	61.96	432.50	436.58
14										
15										
16	478.54	468.33	58.29	58.42	55.82	57.06	59.47	61.03	446.11	451.33
17	475.14	468.33	60.49	60.69	55.61	56.79	59.72	62.14	453.82	458.13
18	456.09	451.33	59.90	60.49	54.07	55.41	60.74	62.41	440.21	444.75
19	483.08	480.81	60.56	60.83	55.43	56.61	63.55	65.14	454.27	458.13
20	474.00	465.39	59.06	59.47	55.79	56.93	65.05	66.68	449.28	452.46
21										
22										
23	480.81	471.74	60.83	61.28	56.95	58.31	63.64	65.32	445.20	451.33
24	469.70	459.26	56.74	57.29	55.43	56.45	62.14	63.87	436.58	441.12
25	463.80	455.41	56.79	57.29	56.06	57.43	61.69	63.55	430.23	435.45
26	467.43	462.66	59.44	60.10	59.38	60.67	63.96	65.86	443.61	449.06
27	463.12	462.66	56.93	57.29	58.20	59.74	62.64	64.43	430.91	437.72
28										
29										
30	468.56	462.66	56.02	56.70	58.08	59.69	61.80	63.10	428.87	430.01
31	472.87	464.93	57.70	58.97	58.99	60.19	61.94	63.73	426.60	432.05
PROMEDIO MES										
MONTH AVG	484.251	475.870	56.196	56.638	55.191	56.436	60.593	62.279	439.820	444.129

Fuente / Source: Reuters. Elaborado por la Comisión Chilena del Cobre

PARIDADES MONEDAS EXTRANJERAS, PROMEDIOS BANCO CENTRAL DE CHILE

PARITY CENTRAL BANK OF CHILE

PERIODO/ PERIOD	US\$ / L	EURO / US\$	YEN / US\$	Observado/ Observed \$/ US\$
2004	1.83110	0.80518	108.153	609.53
2005	1.81820	0.80432	110.059	559.77
2006	1.83969	0.79692	116.317	530.28
2007	2.00116	0.73088	117.756	522.47
2008	1.83549	0.68332	103.470	522.46
ENE/ JAN / 2006	1.76331	0.82656	115.573	524.48
FEB	1.74868	0.83689	117.992	525.70
MAR	1.74486	0.83201	117.246	528.77
ABR/ APR	1.76475	0.81551	117.094	517.33
MAY	1.86883	0.78298	111.728	520.79
JUN	1.84527	0.78910	114.472	542.46
JUL	1.84396	0.78777	115.667	540.62
AGO/ AUG	1.89155	0.78071	115.808	538.53
SEP	1.88784	0.78472	117.034	538.65
OCT	1.87513	0.79257	118.634	530.95
NOV	1.90953	0.77688	117.329	527.44
DIC/ DEC	1.96311	0.75741	117.228	527.58
ENE/ JAN / 2007	1.95822	0.76952	120.378	540.51
FEB	1.95844	0.76494	120.569	542.27
MAR	1.94707	0.75531	117.349	538.49
ABR/ APR	1.98673	0.74065	118.852	532.30
MAY	1.98403	0.73989	120.727	522.02
JUN	1.98551	0.74530	122.580	526.72
JUL	2.03388	0.72920	121.627	519.80
AGO/ AUG	2.01250	0.73360	116.879	522.92
SEP	2.02138	0.72067	115.009	516.91
OCT	2.04286	0.70340	115.787	501.44
NOV	2.07068	0.68121	110.973	506.95
DIC/ DEC	2.02054	0.68692	112.343	499.28
ENE/ JAN / 2008	1.96882	0.67966	107.962	480.90
FEB	1.96416	0.67854	107.202	467.22
MAR	2.00176	0.64536	101.006	442.94
ABR/ APR	1.98050	0.63444	102.483	446.43
MAY	1.96523	0.64285	104.335	470.10
JUN	1.96664	0.64275	106.801	493.61
JUL	1.98836	0.63454	106.918	502.24
AGO/ AUG	1.89385	0.66661	109.309	516.70
SEP	1.79885	0.69498	106.737	530.17
OCT	1.69727	0.74962	100.507	618.39
NOV	1.53375	0.78508	96.995	651.51
DIC/ DEC	1.49060	0.74547	91.378	649.32
ENE/ JAN / 2009	1.44416	0.75227	90.214	623.01
FEB	1.44102	0.78052	92.440	606.00
MAR	1.41797	0.76783	97.651	592.93
Ene-Mar/Jan-Mar/ 2009	1.43438	0.76687	93.4349	607.31
Ene-Mar/Jan-Mar/ 2008	1.97825	0.66785	105.3901	463.69
VARIACION % / % VARIATION Ene-Mar/Jan-Mar/ 2009-2008	-27.5	14.8	-11.3	31.0

FUENTE/ SOURCE: Banco Central de Chile, Reuters.

**ANTECEDENTES DE PRODUCCION Y
EXPORTACIONES /
PRODUCTION AND EXPORTS INFORMATION**

PRODUCCION CHILENA DE COBRE Y MOLIBDENO COMERCIALE
CHILEAN COPPER AND MOLYBDENUM PRODUCTION

	PRODUCCION DE COBRE / COPPER PRODUCTION(1) (Miles de T.M.de Cobre Fino) / (Thousand MT of fine copper)					MOLIBDENO / MOLYBDENUM(3) (T.M. de Fino) / (MT of fine molybdenum)		
	MINA MINE	FUNDICION SMELTER	REFINADO / REFINED COPPER			CONCENT.	OXIDOS OXIDES	TOTAL
			SX-EW	OTROS(2) OTHER	TOTAL			
2004	5,412.5	1,517.6	1,636.3	1,200.4	2,836.7	33,544.2	8,339.0	41,883.2
2005	5,320.5	1,558.1	1,584.6	1,239.4	2,824.0	39,069.7	8,971.0	48,040.7
2006	5,360.8	1,565.4	1,691.8	1,119.5	2,811.3	36,080.6	7,197.0	43,277.6
2007	5,557.0	1,514.3	1,832.1	1,104.4	2,936.5	37,668.1	7,244.0	44,912.1
2008	5,330.3	1,369.2	1,973.7	1,086.6	3,060.3	28,024.5	5,662.0	33,686.5
ENE/ JAN / 2006	415.1	101.6	137.0	92.8	229.8	2,517.2	412.0	2,929.2
FEB	388.3	94.7	124.2	86.0	210.2	2,259.1	714.0	2,973.1
MAR	441.0	121.9	142.0	94.4	236.4	3,147.3	488.0	3,635.3
ABR/ APR	443.6	133.4	131.4	93.7	225.1	2,801.6	690.0	3,491.6
MAY	459.1	140.0	139.1	95.9	235.0	3,366.8	501.0	3,867.8
JUN	447.9	134.4	135.8	91.2	227.0	2,706.5	668.0	3,374.5
JUL	459.8	129.9	144.9	95.4	240.3	2,666.1	656.0	3,322.1
AGO/ AUG	411.7	136.2	135.9	93.8	229.7	3,274.4	299.0	3,573.4
SEP	392.5	134.6	136.8	90.8	227.6	3,306.7	418.0	3,724.7
OCT	490.5	146.2	153.0	95.7	248.7	3,536.6	643.0	4,179.6
NOV	479.0	135.7	148.3	90.2	238.5	3,277.4	802.0	4,079.4
DIC/ DEC	532.3	156.8	163.4	99.6	263.0	3,220.9	906.0	4,126.9
ENE/ JAN / 2007	445.2	113.0	162.6	93.9	256.5	2,855.1	261.0	3,116.1
FEB	388.8	90.8	148.1	82.2	230.3	2,025.1	702.0	2,727.1
MAR	498.1	148.8	153.5	107.0	260.5	3,127.0	790.0	3,917.0
ABR/ APR	454.9	132.5	158.4	98.3	256.7	3,464.5	644.0	4,108.5
MAY	476.1	134.7	159.6	100.4	260.0	3,008.3	612.0	3,620.3
JUN	457.9	129.5	146.5	93.9	240.4	3,247.1	547.0	3,794.1
JUL	451.8	93.5	146.8	72.5	219.3	3,196.1	780.0	3,976.1
AGO/ AUG	427.5	116.3	142.5	72.8	215.3	3,055.7	638.0	3,693.7
SEP	474.5	149.4	150.4	103.2	253.6	3,694.9	427.0	4,121.9
OCT	482.0	140.5	155.6	93.1	248.7	3,496.8	599.0	4,095.8
NOV	469.0	125.1	145.9	90.1	236.0	2,868.4	481.0	3,349.4
DIC/ DEC	531.2	140.2	162.2	97.0	259.2	3,629.1	763.0	4,392.1
ENE/ JAN / 2008	437.0	101.7	160.7	81.2	241.9	3,443.7	87.0	3,530.7
FEB	419.4	117.9	148.2	88.7	236.9	2,096.5	744.0	2,840.5
MAR	453.2	118.5	157.1	89.0	246.1	2,492.2	908.0	3,400.2
ABR/ APR	430.0	97.4	157.5	77.5	235.0	1,671.7	730.0	2,401.7
MAY	466.7	113.6	168.7	92.0	260.7	1,730.7	30.0	1,760.7
JUN	473.2	114.9	163.8	93.7	257.5	1,987.5	769.0	2,756.5
JUL	430.9	115.7	157.7	99.1	256.8	2,352.2	618.0	2,970.2
AGO/ AUG	422.9	110.3	163.8	95.5	259.3	2,112.5	383.0	2,495.5
SEP	423.6	108.7	160.8	89.1	249.9	2,165.1	304.0	2,469.1
OCT	453.8	121.6	171.6	101.5	273.1	2,575.3	299.0	2,874.3
NOV	436.3	112.0	174.9	84.0	258.9	2,380.9	167.0	2,547.9
DIC/ DEC	483.3	136.9	188.9	95.3	284.2	3,016.2	623.0	3,639.2
ENE/ JAN / 2009 (P)	428.1	110.6	182.2	91.7	273.9	2,218.7	654.0	2,872.7
FEB	373.9	98.5	162.9	88.6	251.5	1,838.5	693.0	2,531.5
ENE-FEB/ JAN-FEB / 2009 (P)	802.0	209.1	345.1	180.3	525.4	4,057.2	1,347.0	5,404.2
ENE-FEB/ JAN-FEB / 2008	856.4	219.6	308.9	169.9	478.8	5,540.2	831.0	6,371.2
VARIACION % / % VARIATION								
ENE-FEB/ JAN-FEB/ 2009-2008	-6.4	-4.8	11.7	6.1	9.7	-26.8	62.1	-15.2

(P) Cifras provisionarias./ Provisional figures

(1) A contar del Boletín Agosto 2002, la Producción de Cobre se presenta como: Mina, Fundición y Refinería, de acuerdo a la clasificación usada internacionalmente/ Since 2002 August Bulletin, Copper Production is shown as: Mine, Smelter and refinery, according to the international classification.

(2) Incluye cobre electrorrefinado y cobre refinado a fuego/ Includes electro-refined and fire refined copper.

(3) Corresponde a la producción en las plantas de Codelco-Chile, de Disputada de las Condes (A contar de Agosto de 1994) y de Pelambres (A contar de Enero de 2000). / Corresponds to the production of: Codelco-Chile, Disputada de Las Condes (since August 1994), and Pelambres (since January 2000).

FUENTE/ SOURCE: COMISION CHILENA DEL COBRE.

PRODUCCION CHILENA DE COBRE DE MINA COMERCIALIZABLE POR EMPRESA
CHILEAN COPPER MINE PRODUCTION BY COMPANY

(Miles de T.M. de cobre fino) / (Thousand metric tons of fine copper)

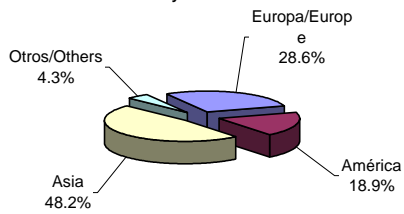
	CODELCO					Anglo American					Anglo American		Cerro Colorado	El Tesoro	Quebrada Blanca	Lomas Bayas	Michilla Spence	Gaby	Otros	TOTAL CHILE		
	División	División	División	División	TOTAL	Los Pelambres	Sur	El Abra	Candelaria	Norte	Zaldívar											
	Codelco Norte	Salvador	Andina	El Teniente	CODELCO	Escondida	Collahuasi	Collahuasi	Collahuasi	Collahuasi	Collahuasi											
2004	982.8	74.9	239.9	435.6	1,733.2	1,195.1	481.0	362.6	300.6	218.0	200.0	155.0	147.6	119.5	97.8	76.3	62.0	50.0	-	-	213.8	5,412.5
2005	964.9	77.5	248.2	437.4	1,728.0	1,271.5	427.0	333.8	293.7	210.6	162.7	149.7	123.3	90.4	98.1	81.0	63.2	46.4	-	-	241.1	5,320.5
2006	940.6	80.6	236.4	418.3	1,675.9	1,255.6	440.0	335.2	294.8	218.6	169.6	152.1	146.3	115.5	94.0	82.4	64.3	47.3	4.3	-	264.9	5,360.8
2007	896.3	63.9	218.4	404.7	1,583.3	1,483.9	452.0	300.1	302.1	166.0	181.0	151.6	142.9	98.7	93.0	82.9	61.5	45.1	128.1	-	284.8	5,557.0
2008	755.3	42.7	219.5	381.2	1,398.7	1,254.0	464.4	351.2	283.5	165.8	173.5	148.9	133.5	104.2	90.8	85.4	59.2	47.7	164.8	70.5	334.2	5,330.3
ENE/ JAN / 2007	74.2	6.1	19.1	23.1	122.5	123.8	24.1	27.4	24.4	15.0	12.7	13.2	12.6	10.4	8.3	7.0	5.6	3.8	10.2	-	24.2	445.2
FEB	48.0	5.8	18.1	28.8	100.7	112.4	19.8	22.6	22.7	13.6	12.2	12.3	11.2	8.5	7.5	6.4	5.1	3.9	9.6	-	20.3	388.8
MAR	69.8	6.2	20.2	41.7	137.9	150.4	33.0	23.1	26.3	14.3	14.2	12.9	12.6	9.2	7.8	7.3	5.8	3.9	13.8	-	25.6	498.1
ABR/ APR	75.9	6.6	19.2	37.7	139.4	117.1	35.8	23.2	22.6	13.1	12.8	12.4	12.3	7.1	8.0	7.0	5.5	3.8	12.0	-	22.8	454.9
MAY	73.4	6.8	18.0	37.6	135.8	130.3	38.1	27.1	26.3	13.7	13.2	12.8	11.6	6.8	7.4	7.1	5.4	4.2	13.2	-	23.1	476.1
JUN	75.3	2.0	17.8	32.5	127.6	124.7	39.2	23.2	24.9	13.0	16.4	11.7	11.2	6.4	7.8	6.7	5.2	3.8	12.4	-	23.7	457.9
JUL	72.0	1.1	15.1	27.0	115.2	129.7	41.5	25.6	24.8	11.2	14.3	12.4	12.4	8.2	7.8	6.5	5.1	3.8	9.4	-	23.9	451.8
AGO/ AUG	68.4	3.2	16.8	25.1	113.5	108.2	44.8	19.7	24.8	13.9	16.4	12.4	12.5	7.3	7.3	6.7	4.8	4.1	7.2	-	23.9	427.5
SEP	84.2	7.3	19.0	38.1	148.6	115.8	43.5	23.6	26.4	14.9	16.1	12.8	11.7	7.6	7.5	6.9	4.8	3.6	7.3	-	23.4	474.5
OCT	75.0	7.3	17.7	38.8	138.8	120.9	43.0	26.1	26.4	13.8	19.0	14.0	12.1	9.0	7.7	7.2	5.2	3.6	8.1	-	27.1	482.0
NOV	86.1	5.1	18.6	33.5	143.3	108.3	42.0	26.8	26.2	13.9	18.5	12.6	11.3	9.1	7.9	6.9	4.5	2.4	11.2	-	24.1	469.0
DIC/ DEC	94.0	6.4	18.8	40.8	160.0	142.3	47.2	31.7	26.3	15.6	15.2	12.1	11.4	9.1	8.0	7.2	4.5	4.2	13.7	-	22.7	531.2
ENE/ JAN / 2008	55.8	4.1	20.1	31.3	111.3	116.1	41.5	23.6	23.6	13.3	11.1	12.6	11.4	9.6	8.4	7.2	4.9	4.0	14.7	-	23.7	437.0
FEB	62.8	5.7	17.5	32.1	118.1	101.0	32.5	28.3	24.3	12.9	12.7	11.9	10.2	9.1	7.2	6.5	4.4	3.6	12.5	-	24.2	419.4
MAR	65.5	4.2	18.2	30.0	117.9	116.6	36.1	30.1	24.8	13.2	14.5	12.7	11.5	10.0	8.4	7.1	4.8	3.9	14.4	-	27.2	453.2
ABR/ APR	66.0	2.7	10.2	19.6	98.5	113.6	42.6	26.4	25.7	13.7	11.1	12.5	11.0	8.5	7.7	7.1	4.6	3.8	14.8	-	28.4	430.0
MAY	70.6	3.0	19.1	24.5	117.2	131.5	35.8	29.1	22.9	14.0	12.3	12.8	10.2	10.1	7.7	7.4	5.0	3.9	15.0	0.7	31.1	466.7
JUN	60.0	5.2	17.5	29.4	112.1	145.4	35.3	32.2	24.1	14.5	14.0	11.5	9.8	8.7	7.3	7.1	4.6	3.9	13.2	5.6	23.9	473.2
JUL	56.0	5.0	19.2	36.4	116.6	91.2	37.0	31.1	22.2	13.7	17.9	11.9	8.4	7.3	7.8	7.0	4.9	4.2	12.0	7.5	30.2	430.9
AGO/ AUG	56.2	3.5	17.3	33.2	110.2	88.0	36.1	29.9	21.3	13.8	19.0	12.9	10.2	7.1	7.3	7.3	4.8	4.1	12.1	9.2	29.6	422.9
SEP	58.7	2.7	20.2	34.4	116.0	92.6	33.7	32.1	20.0	14.4	13.7	12.3	10.5	7.5	6.4	7.0	4.8	4.0	11.6	9.6	27.4	423.6
OCT	63.9	3.5	19.5	35.5	122.4	84.5	42.3	32.3	26.2	13.8	16.6	12.8	13.0	8.5	6.5	7.3	5.1	4.2	13.9	11.9	32.5	453.8
NOV	61.1	0.5	20.3	33.6	115.5	83.3	44.7	26.2	23.5	13.6	16.3	12.5	13.2	8.5	7.7	7.1	4.8	4.0	15.0	12.7	27.7	436.3
DIC/ DEC	78.7	2.6	20.4	41.2	142.9	90.2	46.8	29.9	24.9	14.9	14.3	12.5	14.1	9.3	8.4	7.3	6.5	4.1	15.6	13.3	28.3	483.3
ENE/ JAN / 2009 (P)	55.8	4.8	17.3	31.1	109.0	84.7	44.3	29.2	20.1	13.4	12.9	12.7	12.0	9.2	7.6	7.3	5.8	4.2	16.4	13.6	25.7	428.1
FEB	52.4	4.8	17.9	30.1	105.2	72.6	33.4	24.3	18.6	12.2	11.0	11.5	11.1	8.2	5.6	6.8	5.9	3.7	15.2	11.3	17.3	373.9
ENE-FEB/ JAN-FEB / 2009 (P)	108.2	9.6	35.2	61.2	214.2	157.3	77.7	53.5	38.7	25.6	23.9	24.2	23.1	17.4	13.2	14.1	11.7	7.9	31.6	24.9	43.0	802.0
ENE-FEB/ JAN-FEB / 2008	118.6	9.8	37.6	63.4	229.4	217.1	74.0	51.9	47.9	26.2	23.8	24.5	21.6	18.7	15.6	13.7	9.3	7.6	27.2	0.0	47.9	856.4
VARIACION % / % VARIATION																						
ENE-FEB/ JAN-FEB/ 2009-2008	-8.8	-2.0	-6.4	-3.5	-6.6	-27.5	5.0	3.1	-19.2	-2.3	0.4	-1.2	6.9	-7.0	-15.4	2.9	25.8	3.9	16.2	-	-10.2	-6.4

(P) Cifras provisionarias. / Provisional figures

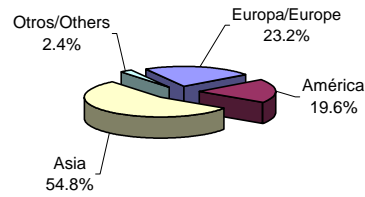
FUENTE/ SOURCE: COMISION CHILENA DEL COBRE.

Evolución Exportaciones por Destinos y Productos Exports Evolution by Destination and Type of Product

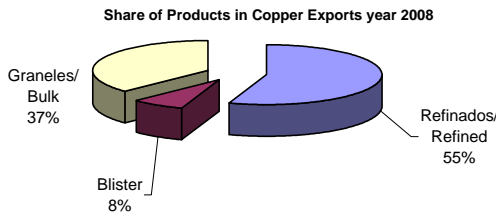
Participación Relativa Embarques de Cobre y Subproductos año 2008
Copper and by-products shipments relative share year 2008



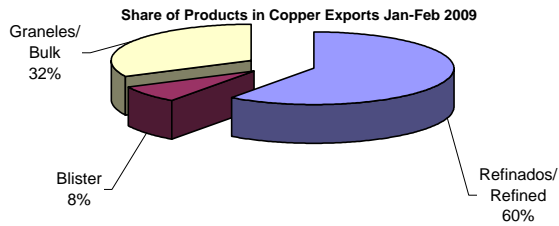
Participación Relativa Embarques de Cobre y Subproductos Ene-Feb 2009
Copper and by-products shipments relative share Jan-Feb 2009



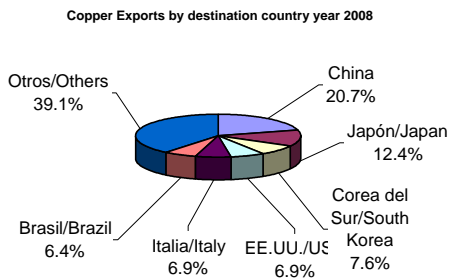
Participación de Productos en las Exportaciones de Cobre año 2008
Share of Products in Copper Exports year 2008



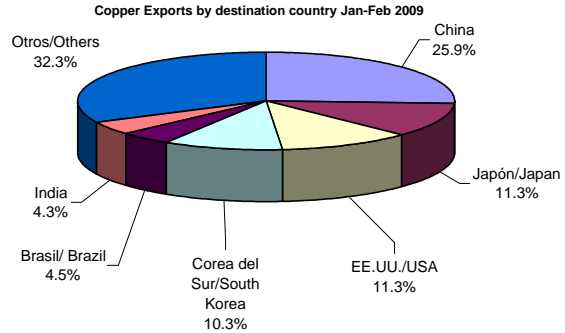
Participación de Productos en las Exportaciones de Cobre Ene-Feb 2009
Share of Products in Copper Exports Jan-Feb 2009



Países de destino de las Exportaciones de Cobre año 2008
Copper Exports by destination country year 2008



Países de destino de las Exportaciones de Cobre Ene-Feb 2009
Copper Exports by destination country Jan-Feb 2009



**VALORES DE LOS EMBARQUES DE EXPORTACION
DE COBRE Y SUBPRODUCTOS**
(FOB líquido de retorno en millones de dólares)
COPPER AND BY-PRODUCTS EXPORT SHIPMENTS VALUE (USD millions FOB)

	COBRE(1) COPPER(1)	CONCENTRADOS MOLIBDENITA MOLYBDENITE CONCENTRATES	OTROS SUBPRODUCTOS (2) OTHER BY-PRODUCTS (2)	TOTAL
2004	14,530.0	457.1	1,102.8	16,089.9
2005	17,762.6	1,101.1	2,184.4	21,048.1
2006	33,350.6	875.0	1,927.2	36,152.8
2007	37,913.2	1,390.0	2,267.8	41,571.0
2008	36,550.2	490.7	2,686.2	39,727.1
ENE/ JAN / 2006	1,899.3	71.8	179.1	2,150.2
FEB	1,933.7	31.6	110.0	2,075.3
MAR	3,342.3	128.9	204.3	3,675.5
ABR/ APR	2,277.3	70.7	132.4	2,480.4
MAY	3,241.0	45.3	183.4	3,469.7
JUN	2,906.2	70.7	129.0	3,105.9
JUL	3,353.7	72.4	159.5	3,585.6
AGO/ AUG	2,912.6	109.0	183.5	3,205.1
SEP	3,196.1	48.4	167.8	3,412.3
OCT	2,959.6	105.6	150.0	3,215.2
NOV	2,876.8	35.6	180.9	3,093.3
DIC/ DEC	2,452.0	85.0	147.3	2,684.3
ENE/ JAN / 2007	3,352.9	117.5	151.2	3,621.6
FEB	2,454.1	134.2	124.7	2,713.0
MAR	2,855.5	298.8	150.3	3,304.5
ABR/ APR	3,188.3	102.8	169.5	3,460.6
MAY	4,122.9	117.1	178.3	4,418.3
JUN	2,940.2	114.9	210.9	3,266.0
JUL	3,522.4	100.9	208.5	3,831.8
AGO/ AUG	2,677.8	107.8	197.9	2,983.5
SEP	3,095.7	62.3	192.5	3,350.5
OCT	3,955.5	56.4	205.8	4,217.7
NOV	3,173.7	102.1	251.3	3,527.1
DIC/ DEC	2,574.3	75.1	227.1	2,876.5
ENE/ JAN / 2008	3,465.2	60.8	222.0	3,748.0
FEB	2,952.5	50.6	212.2	3,215.2
MAR	4,092.1	69.5	263.1	4,424.8
ABR/ APR	3,625.1	46.4	234.9	3,906.5
MAY	2,846.8	38.8	184.0	3,069.6
JUN	3,444.5	41.4	295.2	3,781.1
JUL	3,953.0	65.0	255.8	4,273.8
AGO/ AUG	3,338.3	30.4	262.8	3,631.6
SEP	2,383.6	26.0	232.4	2,642.0
OCT	3,006.2	25.4	222.9	3,254.5
NOV	2,126.5	24.4	142.3	2,293.2
DIC/ DEC	1,316.2	11.9	158.6	1,486.7
ENE/ JAN / 2009	1,471.1	4.8	140.3	1,616.3
FEB	1,247.1	6.2	115.3	1,368.7
ENE-FEB/ JAN-FEB / 2009	2,718.3	11.0	255.6	2,985.0
ENE-FEB/ JAN-FEB / 2008	6,417.8	111.3	434.1	6,963.2
VARIACION % / % VARIATION				
ENE-FEB/ JAN-FEB 2009/2008	-57.6	-90.1	-41.1	-57.1

Nota: Las cifras corresponden a la fecha de emisión del Documento Unico de Salida (DUS).

Los valores del DUS son provisionarios (para las exportaciones bajo condición), mientras no se reemplacen por los valores definitivos de los Informes de Variación de Valor (IVV).

Note: Figures correspond to the date indicated in the the Export Clearance (DUS).

Values of Export Clearance (DUS) are provisional (for exports under condition), until they are replaced by the definitive values in the Value Variati Reports (VVR).

(1) No incluye el valor del cobre contenido en los embarques de concentrados de minerales de oro (Cía. Minera El Indio), por estar incorporado en la glosa de exportaciones de oro que informa el Banco Central de Chile./ Does not include value of copper content in gold concentrates shipments (Cia. Minera El Indio), as they are included in the gold exports gloss informed by the Central Bank of Chile.

(2) Incluye: Barros Anódicos, Metal Doré, Plata, Selenio, Oxido de Molibdeno y otros./ Includes: Anod slimes, dore, silver, selenium, molybdenum oxide and others.

(a) Valor inferior a 50 mil dólares. / Value below 50 thousand dollars.

FUENTE / SOURCE: COMISION CHILENA DEL COBRE.

**EMBARQUES FISICOS DE EXPORTACION DE COBRE Y
CONCENTRADOS DE MOLIBDENITA
COPPER AND MOLIBDENYTE CONCENTRATES EXPORT QUANTITY SHIPMENTS**

	COBRE (Miles de T.M. de Cobre Fino)/ COPPER (thousand MT of fine copper)				C.MOLIBDENITA
	REFINADOS(1)	BLISTER	GRANELES(2)	TOTAL	(T.M. de Fino) MOLYBDENYTE C. (MT of fine)
	REFINED	BLISTER	BULK	TOTAL	
2004	2,953.9	366.1	2,165.6	5,485.6	15,276.2
2005	2,799.3	347.3	2,190.4	5,337.0	18,129.9
2006	2,605.8	457.1	2,171.1	5,234.0	19,793.1
2007	2,909.7	505.5	2,258.1	5,673.4	22,961.7
2008	2,983.1	407.7	2,014.4	5,405.3	7,969.3
ENE/ JAN / 2006	189.2	29.4	170.9	389.5	1,301.8
FEB	233.7	35.1	120.2	389.0	873.2
MAR	300.5	34.4	259.8	594.7	4,242.6
ABR/ APR	178.6	31.4	161.4	371.4	1,455.6
MAY	260.0	40.5	185.1	485.6	962.6
JUN	220.5	31.4	162.2	414.1	1,422.3
JUL	217.1	44.0	231.2	492.3	1,376.7
AGO/ AUG	204.8	61.3	144.0	410.1	2,582.6
SEP	234.2	39.1	177.8	451.1	1,171.4
OCT	197.5	40.5	194.0	432.0	1,970.1
NOV	188.2	37.9	200.5	426.6	698.7
DIC/ DEC	181.5	32.1	164.0	377.6	1,735.5
ENE/ JAN / 2007	317.3	69.9	173.5	560.7	2,322.0
FEB	210.6	40.2	164.4	415.2	2,195.4
MAR	229.0	37.2	199.7	465.9	4,582.7
ABR/ APR	265.7	39.6	170.8	476.1	1,722.0
MAY	362.5	40.5	194.4	597.4	1,972.4
JUN	196.1	35.2	187.6	418.9	1,907.7
JUL	255.8	23.0	216.3	495.1	1,484.1
AGO/ AUG	204.4	38.6	140.1	383.1	1,779.4
SEP	200.2	25.5	232.7	458.5	1,026.4
OCT	267.0	65.8	234.2	567.1	924.4
NOV	226.2	38.0	180.8	445.0	1,822.6
DIC/ DEC	175.0	51.8	163.4	390.2	1,222.7
ENE/ JAN / 2008	246.0	62.0	205.4	513.4	881.8
FEB	261.0	32.4	113.5	406.9	784.6
MAR	255.6	37.9	255.8	549.3	1,121.4
ABR/ APR	236.4	29.4	198.7	464.4	706.6
MAY	213.9	35.0	106.6	355.5	569.9
JUN	232.0	35.5	182.7	450.2	655.7
JUL	268.7	12.7	243.4	524.8	943.3
AGO/ AUG	259.9	42.0	146.3	448.1	454.2
SEP	198.9	14.7	133.8	347.4	442.3
OCT	300.0	35.2	160.9	496.1	394.1
NOV	254.1	43.0	178.6	475.7	434.0
DIC/ DEC	256.8	28.0	88.7	373.4	581.4
ENE/ JAN / 2009	269.0	44.3	175.4	488.8	271.9
FEB	269.2	25.3	114.1	408.6	371.7
ENE-FEB/ JAN-FEB / 2009	538.3	69.7	289.5	897.4	643.6
ENE-FEB/ JAN-FEB / 2008	507.0	94.4	318.9	920.3	1,666.4
VARIACION % / % VARIATION					
ENE-FEB/ JAN-FEB 2009/2008	6.2	-26.2	-9.2	-2.5	-61.4

Nota: Las cifras corresponden a la fecha de emisión del Documento Unico de Salida (DUS).

Los valores del DUS son provisionarios (para las exportaciones bajo condición), mientras no se reemplacen por los valores definitivos de los Informes de Variación de Valor(IVV).

Note: Figures correspond to the date indicated in the the Export Clearance (DUS).

Values of Export Clearance (DUS) are provisional (for exports under condition), until they are replaced by the definitive values in the Value Variation Reports (VVR).

(1) Incluye cátodos, formas especiales y refinado a fuego./ Includes cathodes, special forms and fire refined.

(2) Incluye cementos, concentrados y cobre secundario./ Includes cements, concentrates and secondary copper.

FUENTE / SOURCE: COMISION CHILENA DEL COBRE.

**EMBARQUES FISICOS DE EXPORTACION DE COBRE
POR EXPORTADOR**
(Miles de T.M. de Cobre Fino)
COPPER EXPORT SHIPMENTS QUANTITY BY EXPORTER (Thousand MT of fine copper)

	2007	2008	ENERO-FEBRERO JANUARY-FEBRUARY		VARIACION % ENE-FEB 2009/2008 % VARIATION JAN-FEB 2009/2008
			2008	2009	
CODELCO-CHILE	1,835.3	1,717.6	310.0	317.0	2.3
OTRAS EMPRESAS MINERAS	3,832.0	3,679.9	608.6	579.8	-4.7
OTHER MINING COMPANIES					
ENAMI	137.7	130.4	18.9	31.3	65.6
ANGLO AMERICAN NORTE	113.3	131.3	18.2	17.1	-6.0
ANGLO AMERICAN SUR	260.4	191.8	42.3	39.0	-7.8
XSTRATA COPPER CHILE S.A.	173.3	180.0	40.6	20.7	-49.0
ESCONDIDA	1,353.0	1,152.4	206.9	164.2	-20.6
QUEBRADA BLANCA	80.7	84.3	12.7	14.0	10.2
PUNTA DEL COBRE	8.0	8.9	0.6	0.7	16.7
CERRO COLORADO	95.2	106.0	13.5	23.0	70.4
MINERA MICHILLA S.A.	44.8	47.4	7.8	8.2	5.1
CANDELARIA	179.3	169.6	11.6	17.6	51.7
RAYROCK LTDA.	9.2	6.3	0.9	0.4	-55.6
EL ABRA	170.2	162.4	24.4	28.2	15.6
ANDACOLLO	19.2	21.3	3.0	2.2	-26.7
CIA.EXPLORADORA DE MINAS	10.7	11.4	1.0	1.8	-
ZALDIVAR	148.9	114.7	21.3	26.6	-
COLLAHUASI	360.0	354.2	68.5	69.9	2.0
CERRO DOMINADOR	16.5	17.7	3.4	1.0	-70.6
LOMAS BAYAS	66.4	59.3	8.4	7.2	-14.3
EL TESORO	93.8	94.0	18.9	13.7	-27.5
LOS PELAMBRES	305.5	378.2	46.4	59.0	27.2
ATACAMA KOZAN	13.6	8.1	2.3	1.9	-
HALDEMAN	14.9	16.3	1.2	1.5	25.0
OJOS DEL SALADO	10.0	9.0	-	-	-
GRACE S.A.	15.9	18.3	3.4	1.0	-
SPENCE	114.3	173.0	28.2	28.7	1.8
OTROS	17.2	33.6	4.2	0.9	-78.6
TRANSFORMADORES	1.1	1.4	0.3	0.0	-100.0
TRANSFORMERS					
MADECO	1.1	1.4	0.3	0.0	-100.0
EXPORTADORES DE CHATARRA	5.0	6.4	1.4	0.6	-57.1
SCRAP EXPORTERS					
DIONISIO S.A.	1.0	0.0	0.0	-	-
INESA	-	0.0	-	-	-
MADECO	-	0.0	0.0	-	-
M.CERRILLOS	-	-	-	-	-
OTROS	4.0	6.4	1.4	0.6	-57.1
TOTAL	5,673.4	5,405.3	920.3	897.4	-2.5

Nota: Las cifras corresponden a la fecha de emisión del Documento Unico de Salida (DUS).

Los valores del DUS son provisorios (para las exportaciones bajo condición), mientras no se reemplacen por los valores definitivos de los Informes de Variación de Valor (IVV).

Note: Figures correspond to the date indicated in the the Export Clearance (DUS).

Values of Export Clearance (DUS) are provisional (for exports under condition), until they are replaced by the definitive values in the Value Variation Reports (VVR).

FUENTE: COMISION CHILENA DEL COBRE.

**VALORES DE LOS EMBARQUES DE EXPORTACION DE COBRE Y SUBPRODUCTOS
SEGUN PAIS DE DESTINO AÑO 2008**
(FOB líquido de retorno en millones de dólares)

COPPER AND BY-PRODUCTS EXPORT SHIPMENTS VALUE BY DESTINATION COUNTRY YEAR 2008 (USD millions FOB)

PAIS DE DESTINO DESTINATION COUNTRY	COBRE(1) COPPER	PARTICIPACION(%) SHARE (%)	SUBPRODUCTOS(2) BY-PRODUCTS	PARTICIPACION(%) SHARE (%)	TOTAL TOTAL	PARTICIPACION(%) SHARE (%)
EUROPA/ EUROPE	9,975.0	27.3	1,379.9	43.4	11,354.8	28.6
Alemania/ Germany	1,126.1	3.1	16.0	0.5	1,142.1	2.9
Austria	0.0	-	1.0	0.0	1.0	0.0
Bélgica/ Belgium	236.5	0.6	52.6	1.7	289.1	0.7
Bulgaria	419.0	1.1	-	-	419.0	1.1
España/ Spain	956.9	2.6	66.5	2.1	1,023.3	2.6
Finlandia/ Finland	114.2	0.3	4.4	0.1	118.6	0.3
Francia/ France	1,679.9	4.6	9.7	0.3	1,689.6	4.3
Holanda/ Netherlands	2,129.5	5.8	956.4	30.1	3,085.9	7.8
Italia/ Italy	2,564.4	7.0	65.8	2.1	2,630.2	6.6
Polonia/ Poland	186.9	0.5	-	-	186.9	0.5
Reino Unido/ United Kingdom	74.7	0.2	77.2	2.4	151.9	0.4
Suecia/ Sweden	254.6	0.7	111.0	3.5	365.6	0.9
Suiza/ Switzerland	232.3	0.6	16.6	0.5	248.9	0.6
Otros/ Other	0.0	0.0	2.7	0.1	2.7	0.0
AMERICA / AMERICAS	6,756.7	18.5	733.9	23.1	7,490.5	18.9
Argentina	114.9	0.3	18.4	0.6	133.3	0.3
Bolivia	-	-	2.6	0.1	2.6	0.0
Brasil/ Brazil	2,437.3	6.7	239.8	7.5	2,677.1	6.7
Canadá / Canada	716.8	2.0	13.5	0.4	730.3	1.8
Colombia	18.3	0.1	-	-	18.3	0.0
Estados Unidos/ USA	2,566.2	7.0	365.6	11.5	2,931.8	7.4
México / Mexico	710.6	1.9	93.2	2.9	803.8	2.0
Panamá	123.7	0.3	-	0.0	123.7	0.3
Perú / Peru	29.3	0.1	0.7	0.0	30.0	0.1
Venezuela	39.4	0.1	-	-	39.4	0.1
Otros/ Other	0.2	0.0	0.0	0.0	0.2	0.0
ASIA	18,142.2	49.6	1,024.8	32.3	19,167.1	48.2
Corea del Sur / South Korea	2,800.5	7.7	180.1	5.7	2,980.6	7.5
China	7,222.8	19.8	16.0	0.5	7,238.8	18.2
Filipinas/ Philippines	297.1	0.8	-	-	297.1	0.7
Hong Kong	9.4	0.0	-	-	9.4	0.0
India	1,623.9	4.4	17.2	0.5	1,641.1	4.1
Indonesia	1.1	-	-	-	1.1	0.0
Irán / Iran	28.7	0.1	-	-	28.7	0.1
Japón/ Japan	4,281.9	11.7	799.6	25.2	5,081.5	12.8
Malasia/ Malaysia	40.7	0.1	-	-	40.7	0.1
Singapur/ Singapore	89.8	0.2	0.9	0.0	90.6	0.2
Tailandia/ Thailand	36.0	0.1	6.6	0.2	42.6	0.1
Taiwan/ Taipei, China	1,440.0	3.9	-	-	1,440.0	3.6
Turquía/ Turkey	222.2	0.6	2.7	0.1	224.9	0.6
Vietnam	47.9	0.1	-	-	47.9	0.1
Otros/ Other	0.0	0.0	1.8	0.1	1.8	0.0
OTROS/ OTHER	1,676.3	4.6	38.4	1.2	1,714.6	4.3
Australia	303.8	0.8	0.9	0.0	304.7	0.8
Sudáfrica / South Africa	-	-	37.5	1.2	37.5	0.1
Otros/ Other	1,372.4	3.8	-	-	1,372.4	3.5
TOTAL	36,550.2	100.0	3,176.9	100.0	39,727.1	100.0

(1) Embarques de exportación a consumidores finales y a plantas de tratamiento. /Export shipments to final consumers and treatment plants.

(2) Incluye: Barros Anódicos, Metal Doré, Plata, Selenio, Oxido de Molibdeno, Concentrados de Molibdeno y otros./

Includes: Anod slimes, dore, silver, selenium, molybdenum oxide, molybdenum concentrates and others.

FUENTE/ SOURCE: COMISION CHILENA DEL COBRE.

DESTINO DE LOS EMBARQUES FISICOS DE EXPORTACION DE COBRE (1)
AÑO 2008

(Miles de T.M. de Cobre Fino)

COPPER EXPORT SHIPMENTS QUANTITY BY DESTINATION COUNTRY YEAR 2008 (Thousand MT of fine copper)

PAIS DE DESTINO DESTINATION COUNTRY	REFINADOS(2) REFINED	BLISTER BLISTER	GRANELES(3) BULK	TOTAL TOTAL	PARTICIPACION PORCENTUAL SHARE (%)
EUROPA/ EUROPE	1,063.3	66.6	330.2	1,460.1	27.0
Alemania/ Germany	56.6	5.0	107.0	168.6	3.1
Belgica/ Belgium	0.3	31.7	0.0	32.0	0.6
Bulgaria	-	-	66.5	66.5	1.2
España/ Spain	85.2	-	60.6	145.9	2.7
Finlandia/ Finland	-	-	20.6	20.6	0.4
Francia/ France	239.0	-	-	239.0	4.4
Holanda/ Netherlands	272.8	29.9	-	302.6	5.6
Italia/ Italy	372.1	-	-	372.1	6.9
Polonia/ Poland	-	-	29.0	29.0	0.5
Reino Unido/ United Kingdom	8.6	0.0	0.2	8.8	0.2
Suecia/ Sweden	-	-	46.2	46.2	0.9
Suiza/ Switzerland	28.5	-	-	28.5	0.5
Otros/ Other	0.0	0.0	0.0	0.0	0.0
AMERICA / AMERICAS	592.3	202.8	159.6	954.8	17.7
Argentina	14.8	-	-	14.8	0.3
Brasil/ Brazil	202.6	0.3	143.3	346.3	6.4
Canada	-	84.6	11.5	96.1	1.8
Colombia	2.2	-	0.1	2.3	0.0
Estados Unidos/ United States	329.4	43.0	0.0	372.4	6.9
Mexico	23.6	74.8	-	98.3	1.8
Panamá	15.0	-	0.3	15.3	0.3
Peru	-	0.0	4.2	4.2	0.1
Venezuela	4.7	-	-	4.7	0.1
Otros/ Other	0.0	0.0	0.3	0.3	0.0
ASIA	1,138.4	99.7	1,524.5	2,762.6	51.1
Corea del Sur / South Korea	223.9	23.4	163.0	410.3	7.6
China	606.3	58.2	456.1	1,120.6	20.7
Filipinas/ Philippines	1.0	-	43.6	44.6	0.8
Hong Kong	2.7	-	-	2.7	0.1
India	-	2.0	250.6	252.6	4.7
Indonesia	0.2	-	0.0	0.2	0.0
Irán	-	-	3.6	3.6	0.1
Japon/ Japan	53.1	10.6	607.5	671.2	12.4
Malasia/ Malaysia	7.5	-	-	7.5	0.1
Singapur/ Singapore	12.6	-	-	12.6	0.2
Tailandia/ Thailand	5.6	-	0.0	5.6	0.1
Taiwan/ Taipei, China	188.6	5.6	-	194.2	3.6
Turquía/ Turkey	30.0	-	-	30.0	0.6
Vietnam	6.8	-	-	6.8	0.1
Otros/ Other	0.0	0.0	0.0	0.0	0.0
OTROS/ OTHER	189.2	38.6	0.0	227.8	4.2
Australia	7.4	38.6	-	46.0	0.9
Otros/ Other	181.8	0.0	0.0	181.8	3.4
TOTAL	2,983.1	407.7	2,014.4	5,405.3	100.0

(1) Embarques de exportación a consumidores finales y a plantas de tratamiento. / Export shipments to final consumers and treatment plants.

(2) Incluye cátodos, formas especiales y refinado a fuego. / Includes cathodes, special forms and fire refined.

(3) Incluye cementos, concentrados y cobre secundario. / Includes cements, concentrates and secondary copper.

FUENTE/ SOURCE: COMISION CHILENA DEL COBRE.

**VALORES DE LOS EMBARQUES DE EXPORTACION DE COBRE Y SUBPRODUCTOS
SEGUN PAIS DE DESTINO ENERO-FEBRERO 2009**

(FOB líquido de retorno en millones de dólares)

COPPER AND BY-PRODUCTS EXPORT SHIPMENTS VALUE BY DESTINATION JANUARY-FEBRUARY 2009 (USD millions FOB)

PAIS DE DESTINO DESTINATION COUNTRY	COBRE(1) COPPER	PARTICIPACION(%) SHARE (%)	SUBPRODUCTOS(2) BY-PRODUCTS	PARTICIPACION(%) SHARE (%)	TOTAL TOTAL	PARTICIPACION(%) SHARE (%)
EUROPA/ EUROPE	591.4	21.8	102.5	38.4	693.9	23.2
Alemania/ Germany	106.7	3.9	-	-	106.7	3.6
Bélgica/ Belgium	37.1	1.4	4.7	1.8	41.8	1.4
Bulgaria	24.1	0.9	11.8	4.4	35.9	1.2
España/ Spain	69.0	2.5	0.5	0.2	69.5	2.3
Finlandia/ Finland	9.3	0.3	-	-	9.3	0.3
Francia/ France	112.7	4.1	1.5	0.6	114.3	3.8
Holanda/ Netherlands	99.5	3.7	83.3	31.3	182.8	6.1
Italia/ Italy	107.8	4.0	-	-	107.8	3.6
Reino Unido/ United Kingdom	-	-	0.7	0.2	0.7	0.0
Suecia/ Sweden	24.6	0.9	-	-	24.6	0.8
Suiza/ Switzerland	0.7	0.0	-	-	0.7	0.0
Otros/ Other	0.0	0.0	0.0	0.0	0.0	0.0
AMERICA / AMERICAS	532.0	19.6	53.4	20.0	585.4	19.6
Argentina	8.9	0.3	0.8	0.3	9.7	0.3
Brasil/ Brazil	129.7	4.8	3.2	1.2	132.9	4.5
Canadá / Canada	19.2	0.7	4.1	1.5	23.3	0.8
Estados Unidos/ USA	316.3	11.6	39.7	14.9	356.0	11.9
México / Mexico	50.9	1.9	5.5	2.0	56.3	1.9
Panamá	0.0	-	-	-	0.0	0.0
Perú / Peru	1.6	0.1	-	-	1.6	0.1
Venezuela	5.4	0.2	-	-	5.4	0.2
Otros/ Other	0.0	0.0	0.2	0.1	0.2	0.0
ASIA	1,523.7	56.1	110.8	41.5	1,634.5	54.8
Corea del Sur / South Korea	288.0	10.6	3.2	1.2	291.2	9.8
China	718.8	26.4	42.3	15.8	761.0	25.5
Filipinas/ Philippines	20.6	0.8	-	-	20.6	0.7
Hong Kong	12.4	0.5	-	-	12.4	0.4
India	105.9	3.9	0.6	0.2	106.5	3.6
Japón/ Japan	270.5	9.9	59.6	22.3	330.0	11.1
Malasia/ Malaysia	3.1	0.1	-	-	3.1	0.1
Singapur/ Singapore	7.3	0.3	5.1	1.9	12.5	0.4
Tailandia/ Thailand	1.4	0.1	-	-	1.4	0.0
Taiwan/ Taipei, China	87.7	3.2	-	-	87.7	2.9
Turquía/ Turkey	8.1	0.3	-	-	8.1	0.3
Otros/ Other	0.0	0.0	0.0	0.0	0.0	0.0
OTROS/ OTHER	71.2	2.6	0.0	0.0	71.2	2.4
Australia	25.5	0.9	-	-	25.5	0.9
Otros/ Other	45.7	1.7	0.0	0.0	45.7	1.5
TOTAL	2,718.3	100.0	266.7	100.0	2,985.0	100.0

(1) Embarques de exportación a consumidores finales y a plantas de tratamiento. /Export shipments to final consumers and treatment plants.

(2) Incluye: Barros Anódicos, Metal Doré, Plata, Selenio, Oxido de Molibdeno, Concentrados de Molibdeno y otros./

Includes: Anod slimes, dore, silver, selenium, molybdenum oxide, molybdenum concentrates and others.

FUENTE/ SOURCE: COMISION CHILENA DEL COBRE.

DESTINO DE LOS EMBARQUES FISICOS DE EXPORTACION DE COBRE (1)
ENERO-FEBRERO 2009

(Miles de T.M. de Cobre Fino)

COPPER EXPORT SHIPMENTS QUANTITY BY DESTINATION COUNTRY JANUARY-FEBRUARY 2009 (Thousand MT of fine copper)

PAIS DE DESTINO DESTINATION COUNTRY	REFINADOS(2) REFINED	BLISTER BLISTER	GRANELES(3) BULK	TOTAL TOTAL	PARTICIPACION PORCENTUAL SHARE (%)
EUROPA/ EUROPE	117.9	16.8	60.8	195.5	21.8
Alemania/ Germany	7.7	1.0	27.5	36.2	4.0
Belgica/ Belgium	-	12.1	0.0	12.1	1.4
Bulgaria	-	-	8.3	8.3	0.9
España/ Spain	11.8	-	11.8	23.6	2.6
Finlandia/ Finland	-	-	3.8	3.8	0.4
Francia/ France	35.0	-	-	35.0	3.9
Holanda/ Netherlands	28.1	3.7	-	31.8	3.5
Italia/ Italy	35.4	-	-	35.4	3.9
Suecia/ Sweden	-	-	9.1	9.1	1.0
Suiza/ Switzerland	-	-	0.2	0.2	0.0
Otros/ Other	0.0	0.0	0.0	0.0	0.0
AMERICA / AMERICAS	138.9	14.9	14.8	168.5	18.8
Argentina	2.4	-	-	2.4	0.3
Brasil/ Brazil	26.6	-	14.2	40.8	4.5
Canada	-	6.0	-	6.0	0.7
Estados Unidos/ United States	101.7	-	-	101.7	11.3
Mexico	7.4	8.9	-	16.3	1.8
Panamá	-	-	0.1	0.1	0.0
Peru	-	-	0.5	0.5	0.1
Venezuela	0.8	-	-	0.8	0.1
Otros/ Other	0.0	0.0	0.0	0.0	0.0
ASIA	267.3	29.5	214.0	510.7	56.9
Corea del Sur / South Korea	57.2	13.1	22.5	92.7	10.3
China	170.9	13.5	48.2	232.6	25.9
Filipinas/ Philippines	-	-	7.8	7.8	0.9
Hong Kong	3.9	0.3	-	4.3	0.5
India	-	-	38.3	38.3	4.3
Japon/ Japan	2.1	2.6	97.1	101.8	11.3
Malasia/ Malaysia	1.0	-	-	1.0	0.1
Singapur/ Singapore	2.5	-	-	2.5	0.3
Tailandia/ Thailand	0.5	-	-	0.5	0.1
Taiwan/ Taipei, China	26.7	-	-	26.7	3.0
Turquía/ Turkey	2.5	-	-	2.5	0.3
Otros/ Other	0.0	0.0	0.0	0.0	0.0
OTROS/ OTHER	14.1	8.5	0.0	22.7	2.5
Australia	-	8.5	-	8.5	0.9
Otros/ Other	14.1	0.0	0.0	14.1	1.6
TOTAL	538.3	69.7	289.5	897.4	100.0

(1) Embarques de exportación a consumidores finales y a plantas de tratamiento. / Export shipments to final consumers and treatment plants.

(2) Incluye cátodos, formas especiales y refinado a fuego. / Includes cathodes, special forms and fire refined.

(3) Incluye cementos, concentrados y cobre secundario. / Includes cements, concentrates and secondary copper.

FUENTE/ SOURCE: COMISION CHILENA DEL COBRE.

VENTAS DE COBRE REFINADO A LA INDUSTRIA MANUFACTURERA NACIONAL
(Miles de T.M. de cobre fino)
REFINED COPPER SALES TO DOMESTIC MANUFACTURING INDUSTRY (Thousands MT of fine copper)

PERIODO PERIOD	ELECTROLITICO ELECTROLITHIC	TRES ESTRELLAS	TOTAL	
			PERIODO PERIOD	ACUMULADO ACUMMULATED
2004	82.1	18.3	100.4	-
2005	85.7	17.0	102.7	-
2006	94.0	16.7	110.7	-
2007	95.1	10.2	105.3	-
2008	94.8	8.4	103.2	-
ENE/ JAN / 2006	7.9	1.2	9.1	9.1
FEB	8.1	1.4	9.5	18.6
MAR	10.3	1.6	11.9	30.5
ABR/ APR	8.4	2.0	10.4	40.9
MAY	8.7	1.5	10.2	51.1
JUN	8.1	1.9	10.0	61.1
JUL	8.5	1.6	10.1	71.2
AGO/ AUG	7.7	1.3	9.0	80.2
SEP	6.5	1.3	7.8	88.0
OCT	6.9	1.4	8.3	96.3
NOV	7.7	1.0	8.7	105.0
DIC/ DEC	5.2	0.5	5.7	110.7
ENE/ JAN / 2007	7.2	0.1	7.3	7.3
FEB	6.5	0.5	7.0	14.3
MAR	8.1	1.0	9.1	23.4
ABR/ APR	8.3	1.5	9.8	33.2
MAY	9.1	1.4	10.5	43.7
JUN	8.8	1.3	10.1	53.8
JUL	7.9	1.3	9.2	63.0
AGO/ AUG	7.6	0.5	8.1	71.1
SEP	7.6	1.0	8.6	79.7
OCT	9.7	0.7	10.4	90.1
NOV	9.4	0.5	9.9	100.0
DIC/ DEC	4.9	0.4	5.3	105.3
ENE/ JAN / 2008	8.5	1.4	9.9	9.9
FEB	8.1	1.2	9.3	19.2
MAR	8.3	1.1	9.4	28.6
ABR/ APR	8.8	0.4	9.2	37.8
MAY	9.2	0.4	9.6	47.4
JUN	7.7	0.7	8.4	55.8
JUL	9.5	0.8	10.3	66.1
AGO/ AUG	8.4	0.6	9.0	75.1
SEP	7.8	0.7	8.5	83.6
OCT	7.5	0.4	7.9	91.5
NOV	6.3	0.4	6.7	98.2
DIC/ DEC	4.7	0.3	5.0	103.2
ENE/ JAN / 2009	8.2	0.0	8.2	8.2
FEB	8.9	0.4	9.3	17.5
ENE-FEB/ JAN-FEB / 2009	17.1	0.4	17.5	
ENE-FEB/ JAN-FEB / 2008	16.6	2.6	19.2	
VARIACION % / % VARIATION				
ENE-FEB/ JAN-FEB/ 2009-2008	3.0	-84.6	-8.9	

FUENTE/ SOURCE: COMISION CHILENA DEL COBRE.

**ANTECEDENTES DE LOS CONTRATOS DE
EXPORTACIONES CHILENAS DE CONCENTRADOS
Y CATODOS DE COBRE /
CHILEAN COPPER CONCENTRATES AND CATHODES
EXPORT CONTRACTS INFORMATION**

Características de los contratos de exportación de concentrados 2009

Characteristics of 2009 concentrates export contracts

Criterios y definiciones / Criteria and definitions:

1. Tipo de Contrato / Type of Contract:

La clasificación es la siguiente / The classification is the following :

Tipo / type	Contratos incluidos / Included contracts
Abastecimiento Anual (1)	Anual / Annual
Abastecimiento Evergreen (2)	Evergreen
Abastecimiento Largo Plazo (3)	Largo plazo / Long term
Spot (4)	Spot

(1) Venta con entrega durante todo el año. Normalmente, tienen los términos acordados para todas las cuotas.

/ Sale with delivery during all the year. Normally, they have the terms agreed for all the quotas.

(2) Venta con compromiso de entrega superior a un año, con vigencia sujeta a renovación periódica por las partes. / Sale with commitment of delivery over a year, with duration depending to periodic renewal by the parts.

(3) Venta con compromiso de entrega superior a un año, donde se fija la mayoría de las condiciones dejando algunos términos comerciales bajo negociación periódica durante la vida del contrato.

/ Sale with commitment of delivery over a year, where the majority of the conditions are fixed leaving some commercial terms for periodic negotiation during the life of the contract.

(4) Venta ocasional. / Occasional Sale.

2. Q/P

Período de preciación (Quotation Period), período que se toma como referencia para efectos de la valoración del producto. / Quotation Period, is the period taken as a reference in order to appraise the product.

En los contratos evergreen la relación contractual está siempre vigente, a diferencia de los contratos anuales que duran un período. / Evergreen contracts are always in force, meanwhile annual contracts last for only one period.

Los contratos de abastecimiento de largo plazo (más de un año), no necesariamente incorporan en el contrato inicial los Q/P; estos se establecen posteriormente. / Long-term supplies contract (more than one year), do not necessarily add Q/P to the initial contract; these are established lately.

Otra situación que genera desconocimiento inicial del Q/P a utilizar, corresponde a los contratos que incorporan una cláusula de opción de fijar el Q/P durante el período de vigencia del contrato. / Another situation leading to an initial disregard of the Q/P to be used, corresponds to contracts which incorporate a clause with the option to fix Q/P during the contract duration period.

Para efectos de agregar la información de los contratos se han sumado los Q/P según la siguiente tabla: / To add information of the contracts, Q/P have been added according to the following table:

Q/P	Definición/ Definition	Agrupados bajo:/ Grouped under:
A + 2	Segundo mes después del arribo / Second month upon arrival	A + 2
A + 3	Tercer mes después del arribo / Third month upon arrival	A + 3
EFE	Entre fechas distintas a mensual / Between dates different to monthly	EFE
M / M + 3	Tercer mes después del M / Thirth month following to the M	M / M + 3
M / M + 4	Cuarto mes después del M / Fourth month following to the M	M / M + 4
MEE / EMS + 4	Cuarto mes después del MEE / Fourth month following to the EMS	MEE / EMS + 4
A + 1	Primer mes después del arribo / First month upon arrival	Otros/ Other
A + 4	Cuarto mes después del arribo / Fourth month upon arrival	
M / M + 1	Primer mes después del M / First month following to the M	
M / M + 2	Segundo mes después del M / Second month following to the M	
MEE / EMS + 3	Tercer mes después del MEE / Thirth month following to the EMS	

Definiciones / Definitions:

M: Mes contractual de embarque / M: Contractual month of shipment

MEE: Mes efectivo del embarque / EMS: Effective month of shipment

Nota: Las exportaciones de concentrados informadas a la fecha, están sujetas a eventuales modificaciones que podrían realizar los exportadores./ Note: Concentrates exports informed up to date, are subject to eventual modifications by the exporters.

Definiciones / Definitions:

COMPROMISOS DE EXPORTACION DE CONCENTRADOS DE COBRE
Tonelaje y TC-RC Comprometido: Año 2009
COPPER CONCENTRATES EXPORT AGREEMENTS
Tonnage and TC-RC Agreed in Year 2009

I. SEGUN TIPO DE CONTRATO Y REGION / BY TYPE OF CONTRACT AND REGION

TONELAJE (TMS) / TONNAGE (MT) (1)		DESTINO CONTRACTUAL / CONTRACTUAL DESTINATION			
Tipo de Contrato / Type of Contract	ASIA	EUROPA / Europe	Sudamérica y otros / South America and Others	Comerciantes/ Trader	TOTAL
Abastecimiento / Supply	341,599	249,810	10,010	0	601,419
Abastecimiento Anual	129,010	95,000			224,010
Abastecimiento Evergreen	134,036	39,810			173,846
Abastecimiento Largo Plazo	78,553	115,000	10,010		203,563
Spot	199,900	10,000		40,000	249,900
Total contratos / Total contracts (1)	541,499	259,810	10,010	40,000	851,319

TC - RC (2)		DESTINO CONTRACTUAL / CONTRACTUAL DESTINATION			
Tipo de Contrato / Type of Contract	ASIA	EUROPA / Europe	Sudamérica y otros / South America and Others	Comerciantes/ Trader	TOTAL
Abastecimiento / Supply					
TC ponderado (US\$/TM) / Weighted TC (USD/MT)	56.2	67.0	45.0		60.6
Abastecimiento Anual	65.4	67.9			66.5
Abastecimiento Evergreen	51.9	69.8			56.0
Abastecimiento Largo Plazo	49.4	65.2	45.0		58.1
TC Minimo / Maximo (Low / High)	(42,0 ; 75,0)	(45,0 ; 80,0)	(45,0 ; 45,0)		(42,0 ; 80,0)
RC ponderado (¢/lb) / Weighted RC (¢/lb)	5.5	6.7	4.5		6.0
Abastecimiento Anual	6.2	6.8			6.5
Abastecimiento Evergreen	5.2	7.0			5.6
Abastecimiento Largo Plazo	4.9	6.5	4.5		5.8
RC Minimo / Maximo (Low / High)	(2,9 ; 7,5)	(4,5 ; 8,0)	(4,5 ; 4,5)		(2,9 ; 8,0)
Spot					
TC ponderado (US\$/TM) / Weighted TC (USD/MT)	67.9	61.0		55.0	65.5
Minimo / Maximo (Low / High)	(35,0 ; 105,4)	(61,0 ; 61,0)		(45,0 ; 65,0)	(35,0 ; 105,4)
RC ponderado (¢/lb) / Weighted RC (¢/lb)	6.7	6.1		5.5	6.5
Minimo / Maximo (Low / High)	(2,0 ; 10,5)	(6,1 ; 6,1)		(4,5 ; 6,5)	(2,0 ; 10,5)
Total					
TC ponderado (US\$/TM) / Weighted TC (USD/MT)	60.5	66.7	45.0	55.0	62.0
RC ponderado (¢/lb) / Weighted RC (¢/lb)	5.9	6.7	4.5	5.5	6.1

II. SEGUN Q/P Y REGION / BY Q/P AND REGION

TONELAJE (TMS) / TONNAGE (MT) (2)		DESTINO CONTRACTUAL / CONTRACTUAL DESTINATION			
Q/P (3)	ASIA	EUROPA / Europe	Sudamérica y otros / South America and Others	Comerciantes/ Trader	TOTAL
A+2	83,902	15,000			98,902
A+3	179,587	55,000			234,587
EFE		63,800			63,800
M+3		50,000	10,010		60,010
M+4	145,000	15,000		40,000	200,000
MEE+4	40,000	21,010			61,010
Otros	93,010	40,000			133,010
Total	541,499	259,810	10,010	40,000	851,319

TC - RC (2)		DESTINO CONTRACTUAL / CONTRACTUAL DESTINATION			
Q/P (3)	ASIA	EUROPA / Europe	Sudamérica y otros / South America and Others	Comerciantes/ Trader	TOTAL
A+2					
TC ponderado (US\$/TM) / Weighted TC (USD/MT)	46.4	75.0			50.7
RC ponderado (¢/lb) / Weighted RC (¢/lb)	4.6	7.5			5.1
A+3					
TC ponderado (US\$/TM) / Weighted TC (USD/MT)	54.2	68.2			57.5
RC ponderado (¢/lb) / Weighted RC (¢/lb)	5.3	6.8			5.7
EFE					
TC ponderado (US\$/TM) / Weighted TC (USD/MT)		65.9			65.9
RC ponderado (¢/lb) / Weighted RC (¢/lb)		6.6			6.6
M+3					
TC ponderado (US\$/TM) / Weighted TC (USD/MT)		60.0	45.0		57.5
RC ponderado (¢/lb) / Weighted RC (¢/lb)		6.0	4.5		5.7
M+4					
TC ponderado (US\$/TM) / Weighted TC (USD/MT)	74.1	65.7		55.0	69.5
RC ponderado (¢/lb) / Weighted RC (¢/lb)	7.4	6.6		5.5	6.9
MEE+4					
TC ponderado (US\$/TM) / Weighted TC (USD/MT)	75.0	60.7			70.1
RC ponderado (¢/lb) / Weighted RC (¢/lb)	7.5	6.1			7.0
Otros					
TC ponderado (US\$/TM) / Weighted TC (USD/MT)	58.9	75.0			64.1
RC ponderado (¢/lb) / Weighted RC (¢/lb)	5.5	7.5			6.1
Total					
TC ponderado (US\$/TM) / Weighted TC (USD/MT)	60.5	66.7	45.0	55.0	62.0
RC ponderado (¢/lb) / Weighted RC (¢/lb)	5.9	6.7	4.5	5.5	6.1

Cifras provisionarias. Ver características de los contratos para los Q/P. / Provisional figures. Please review contracts for Q/P characteristics.

(1) Incluye todos los contratos registrados a la fecha. / Includes contracts registered up date.

(2) Se excluyen contratos sin información y casos especiales. / Excludes contracts without information and special cases.

(3) Condiciones incluidas según su importancia relativa en los Q/P totales. / Included conditions depends on relative importance on Q/P.

Fuente / Source: Elaborado por la Comisión Chilena del Cobre

Características de los contratos de exportación de cátodos 2009 Characteristics of 2009 cathodes export contracts

Crterios y definiciones / Criteria and definitions:

1. Tipo de Producto / Type of Product:

Los cátodos estándar incluyen tanto a aquellos con defectos físicos como los que no se encuentran registrados en Bolsas de Metales. El cátodo grado A corresponde a aquel registrado en Bolsa de Metales / Standard cathodes includes those with physical defects and those not registered in Metal Exchanges. A grade cathode corresponds to those registered in Metal Exchanges.

2. Q/P

Período de apreciación (Quotation Period), período que se toma como referencia para efectos de la valoración del producto. Para efectos de agregar la información de los contratos se han sumado los Q/P según la siguiente tabla:/ The Quotation Period, is the period taken as a reference in order to appraise the product. To add to the information of the contracts, the Q/P have been added according to the following table:

Q/P	Definición/ Definition	Agrupados bajo:/ Crowed under:
EFE	Entre fechas distintas a mensual/ Between dates different to monthly	EFE
M / M	Mes contractual de embarque/ Contractual month of shipment	M / M
M / M + 1	Mes siguiente al M / Month following to the M	M / M +1
M / M - 1	Primer mes anterior al M / First month prior to the M	
M / M + 2	Segundo mes luego del M / Second month following to the M	
M / M +3	Tercer mes luego del M / Thirth month following to the M	
MEE / EMS	Mes efectivo del embarque / EMS: Effective month of shipment	
PRFIJO	Precio fijo/ Fixed price	

Definiciones / Definitions:

M: Mes contractual de embarque / M: Contractual month of shipment

MEE: Mes efectivo del embarque / EMS: Effective month of shipment

Nota: Las exportaciones de cátodos informadas a la fecha, están sujetas a eventuales modificaciones que podrían realizar los exportadores./ Note: Cathodes exports informed up to date, are subject to eventual modifications by the exporters.

COMPROMISOS DE EXPORTACION DE CATODOS DE COBRE
Tonelage y Premio Comprometido: Año 2009
COPPER CATHODES EXPORT AGREEMENTS
Tonnage and Premium Agreed in Year 2009

I. SEGUN TIPO DE CONTRATO Y PRODUCTO/ BY TYPE OF CONTRACT AND PRODUCT

TONELAJE / TONNAGE (MT)	DESTINO CONTRACTUAL / CONTRACTUAL DESTINATION					TOTAL
	ASIA	EUROPA / Europe	Norteamérica / North America	Sudamérica y otros / South America and Others	Comerciantes/ Trader	
Tipo de Contrato-Producto / Type of Contract -Product						
Abastecimiento / Supply						
Estándar / Standard	173,900	97,020	24,100	30,600	7,000	332,620
Grado A / A Grade	808,802	329,690	128,458	95,850	67,900	1,430,700
Off Grade	30,500	14,324	2,850	13,000		60,674
Total abastecimiento / Total supply	1,013,202	441,035	155,408	139,450	74,900	1,823,995
Spot						
Estándar / Standard	11,850	15,095	5,318	900	18,050	51,213
Grado A / A Grade	72,000	38,950	49,500	2,100	90,050	252,600
Off Grade	15,433	9,582	10,695	200	9,500	45,410
Total spot	99,283	63,627	65,513	3,200	117,600	349,223
Total contratos / Total contracts	1,112,485	504,662	220,921	142,650	192,500	2,173,218

PREMIO PONDERADO / WEIGHTED PREMIUM (USD)	DESTINO CONTRACTUAL / CONTRACTUAL DESTINATION					TOTAL
	ASIA	EUROPA / Europe	Norteamérica / North America	Sudamérica y otros / South America and Others	Comerciantes/ Trader	
Tipo de Contrato-Producto / Type of Contract -Product						
Abastecimiento / Supply						
Estándar / Standard	21.1	53.7	23.9	18.5	41.5	38.4
Grado A / A Grade	85.6	96.2	103.7	9.1	57.2	89.7
Off Grade	-61.7	-3.3	-110.0	-170.0		-9.1
Promedio abastecimiento / Supply average	80.9	57.9	102.3	1.8	55.9	77.7
Minimo / Maximo (Low / High)	(-190.0 ; 150.0)	(-141.0 ; 150.0)	(-110.0 ; 150.0)	(-170.0 ; 140.0)	(40.0 ; 85.0)	(-190.0 ; 150.0)
Spot						
Estándar / Standard	96.2	67.7	117.8	-65.0	-43.4	70.1
Grado A / A Grade	50.5	49.4	51.6	-16.6	54.0	51.0
Off Grade	-88.0	-55.6	-86.4	-147.0	-203.7	-118.6
Promedio spot / Spot average	43.7	36.4	49.3	-42.8	-4.4	27.9
Minimo / Maximo (Low / High)	(-165.0 ; 120.0)	(-126.0 ; 160.0)	(-147.0 ; 160.0)	(-147.0 ; 40.0)	(-250.0 ; 81.0)	(-250.0 ; 160.0)
Promedio Total / Total average	79.7	56.8	100.2	1.2	20.7	75.1

II. SEGUN BOLSAS DE METALES Y Q/P / BY METAL EXCHANGES AND Q/P

TONELAJE / TONNAGE (MT)	DESTINO CONTRACTUAL / CONTRACTUAL DESTINATION					TOTAL
	ASIA	EUROPA / Europe	Norteamérica / North America	Sudamérica y otros / South America and Others	Comerciantes/ Trader	
Bolsa - Q/P / Exchange - Q/P (1)						
LME	1,112,485	504,662	82,266	118,650	192,500	2,010,563
EFE	43,500	98,600	7,250	24,400	4,000	177,750
M / M	58,333	19,509	28,000	19,250	61,900	186,992
M+1 M.+1	984,952	384,552	37,016	57,525	105,600	1,569,646
Otros Q/P / Other Q/P	25,700	2,000	10,000	17,475	21,000	76,175
COMEX	0	0	138,655	24,000	0	162,655
EFE			2,020	24,000		26,020
M / M			114,955			114,955
M+1 M.+1						0
Otros Q/P / Other Q/P			21,680			21,680
Total	1,112,485	504,662	220,921	142,650	192,500	2,173,218

PREMIO PONDERADO / WEIGHTED PREMIUM (USD)	DESTINO CONTRACTUAL / CONTRACTUAL DESTINATION					TOTAL
	ASIA	EUROPA / Europe	Norteamérica / North America	Sudamérica y otros / South America and Others	Comerciantes/ Trader	
Bolsa - Q/P / Exchange - Q/P (1)						
LME						
EFE	73.9	78.0	120.0	-97.8	50.0	61.9
M / M	60.8	42.5	57.3	13.7	32.5	43.9
M+1 M.+1	80.7	55.6	106.1	7.5	11.0	78.0
Otros Q/P / Other Q/P	64.9	87.5		6.9	50.0	46.5
Promedio LME / LME Average	79.7	56.8	105.5	-2.8	20.7	75.9
COMEX						
EFE			54.0	35.4		36.8
M / M			30.3			30.3
M+1 M.+1						
Otros Q/P / Other Q/P			26.5			26.5
Promedio COMEX / COMEX Average			30.0	35.4		30.9
Promedio Total / Total average	79.7	56.8	100.2	1.2	20.7	75.1

Cifras provisionarias. Ver características de los contratos para los Q/P. / Provisional figures. Please review contracts for Q/P characteristics.
(1) Condiciones incluidas según su importancia relativa en los Q/P totales. / Included conditions depends on relative importance on Q/P.
Fuente / Source: Elaborado por la Comisión Chilena del Cobre

Este trabajo fue efectuado por:

Juan Ocaranza A.
Juan Ciudad L.
Oscar Arce U.

ABRIL, 2009 - APRIL, 2009