

BOLETIN MENSUAL

MONTHLY REPORT

ENERO 2010
JANUARY 2010

Está permitida la reproducción total o parcial de este documento citando la fuente.
Esta es una publicación de la Comisión Chilena del Cobre, institución autónoma de carácter público
que tiene entre su misión la difusión de la actividad minera.

Agustinas 1161, 4° piso. Teléfono (56 2) 3828100. www.cochilco.cl
Total or partial reproduction is allowed, indicating its source: "Comisión Chilena del Cobre"

I. RESUMEN PRINCIPALES ESTADISTICAS ENERO 2010	
<i>MAIN STATISTICS SUMMARY-JANUARY 2010</i>	
II. ANTECEDENTES DE PRECIOS / PRICE INFORMATION	
2.1 Precio del cobre refinado, nominal y real; B.M.L. y COMEX; mensual 2007 - 2010	1
<i>Refined copper prices, nominal and constant; LME and COMEX; 2007-2010 monthly</i>	
2.2 Precio del cobre refinado, nominal y real; B.M.L. y COMEX; anual 1935 - 2010	2
<i>Refined copper prices, nominal and constant; LME and COMEX; 1935-2010 annual</i>	
2.3 Precio promedio del cobre refinado en la B.M.L., mensual, acumulado anual y 12 meses, nominal	3
<i>LME refined copper average price; monthly, accumulated per annum, and 12 months, nominal</i>	
2.4 Precios diarios del cobre en bolsas - cátodos grado "A", Enero 2010	4
<i>Exchanges daily copper prices - A grade cathodes, January 2010</i>	
2.5 Stocks de cobre en bolsas-cátodos grado "A"	5
<i>Copper warehouse stocks - A grade cathodes</i>	
2.6 Volúmenes de cobre transado en bolsas - cátodos grado "A"	6
<i>Copper ring volume - A grade cathodes</i>	
2.7 Volúmenes e intereses abiertos de futuros y opciones de cobre en la B.M.L.	7
<i>LME copper futures & option volume and open interest</i>	
2.8 Precio promedio del cobre en Estados Unidos, productores, COMEX y chatarra, nominal	8
<i>Copper average price in U.S.A.: producers, COMEX, and scrap, nominal</i>	
2.9 Precios promedios metales preciosos, nominales	9
<i>Precious metals average prices, nominal</i>	
2.10 Precios diarios Oro: Enero 2010	10
<i>Gold daily prices: January 2010</i>	
2.11 Precios diarios Plata: Enero 2010	11
<i>Silver daily prices: January 2010</i>	
2.12 Precios promedios otros metales, nominales	12
<i>Other metals average prices, nominal</i>	
2.13 Precios diarios Otros Metales Bolsa de Metales de Londres, nominal: Enero 2010	13
<i>Other metals daily prices LME, nominal: January 2010 prices</i>	
2.14 Paridades monedas extranjeras, promedios Banco Central de Chile	14
<i>Parity Central Bank of Chile</i>	
III. ANTECEDENTES DE PRODUCCION Y EXPORTACIONES	
<i>PRODUCTION AND EXPORTS INFORMATION</i>	
3.1 Producción chilena de cobre y molibdeno comerciable	15
<i>Chilean copper and molybdenum production</i>	
3.2 Producción chilena de cobre de mina comerciable por empresa	16
<i>Chilean copper mine production by company</i>	
3.3 Evolución de exportaciones por destinos y productos	17
<i>Exports evolution by destination and type of product</i>	
3.4 Valores de los embarques de exportación de cobre y subproductos	18
<i>Copper and by-products export shipments value</i>	
3.5 Embarques físicos de exportación de cobre y concentrados de molibdenita	19
<i>Copper and molybdenite concentrates export quantity shipments</i>	
3.6 Embarques físicos de exportación de cobre por exportador	20
<i>Copper export shipments quantity by exporter</i>	
3.7 Valores de los embarques de exportación de cobre y subproductos según país de destino - año 2008	21
<i>Copper and by-products export shipments value by destination country - year 2008</i>	
3.8 Destino de los embarques físicos de exportación de cobre - año 2008	22
<i>Copper export shipments quantity by destination country - year 2008</i>	
3.9 Valores de los embarques de exportación de cobre y subproductos según país de destino - año 2009	23
<i>Copper and by-products export shipments value by destination country - year 2009</i>	
3.10 Destino de los embarques físicos de exportación de cobre - año 2009	24
<i>Copper export shipments quantity by destination country - year 2009</i>	
3.11 Ventas de cobre refinado a la industria manufacturera nacional	25
<i>Refined copper sales to domestic manufacturing industry</i>	
IV. ANTECEDENTES DE LOS CONTRATOS DE EXPORTACIONES CHILENAS DE CONCENTRADOS Y CATODOS DE COBRE/ CHILEAN COPPER CONCENTRATES AND CATHODES EXPORT CONTRACTS INFORMATION	
4.1 Características de los contratos de exportación de concentrados de cobre - año 2009	27
<i>Characteristics of copper concentrates export contracts - year 2009</i>	
4.2 Compromisos de exportación de concentrados de cobre - año 2009	28
<i>Copper concentrates export agreements - year 2009</i>	
4.3 Características de los contratos de exportación de cátodos de cobre - año 2009	29
<i>Characteristics of copper cathodes export contracts - year 2009</i>	
4.4 Compromisos de exportación de catodos de cobre - año 2009	30
<i>Copper cathodes export agreements - year 2009</i>	

Resumen Principales Estadísticas Enero 2010 Main Statistics Summary - January 2009

Precio del Cobre LME / Copper price (¢US\$/lb)

Promedio Mensual Enero 2010 / January 2010 Monthly Avg	335.035
Promedio año a la fecha / Up to date annual average	335.035
Valor Mínimo año 2010 / Minimum value	310.892
Valor Máximo año 2010 / Maximum value	348.586

Precio del Cobre Comex/ COMEX copper price (¢US/lb)

Promedio Primera Posición Enero / January first position avg	333.766
---	---------

Precio Promedio Principales Metales Enero

January Main Metals Average Price	
Plata / Silver (US\$/ Onza; London Spot)	17.79
Oro / Gold (US\$/ Onza; London Inicial)	1,119.6
Aluminio /Aluminum (¢US\$/LB; LME)	101.4
Plomo / Lead (¢US\$/LB; LME)	107.4
Zinc (¢US\$/LB; LME)	110.4
Estaño / Tin (¢US\$/LB; Comerciantes EEUU / US Merchants)	830.4
Níquel / Nickel (¢US\$/LB; LME)	836.4
Molibdeno / Molybdenum (US\$/LB; Comerciantes EEUU)	14.51

Exportaciones Chilenas de Cobre (Millones de US\$)

Chilean Copper Exports (USD Millions)	
Dic / Dec 2009	3,149.0

Acumulado / Accumulated:	
Ene-Dic 2008/ Jan-Dec 2008	36,550.2
Ene-Dic 2009/ Jan-Dec 2009	26,271.1
Variación / Variation	-28.1%

Stocks Cobre Bolsas / Metal Exchanges Copper Stocks (TMF)

	31-12-2009		29-01-2010	Variación % / % Variation
LME	502,375	541,050		7.7%
COMEX	89,976	94,003		4.5%
SHANGHAI	95,315	101,210		6.2%
TOTAL	687,666	736,263		7.1%

Producción Chilena de Cobre Comercializable (Miles de TMF)

Chilean Copper Production (thousand FMT)	
Dic / Dec 2009	505.6

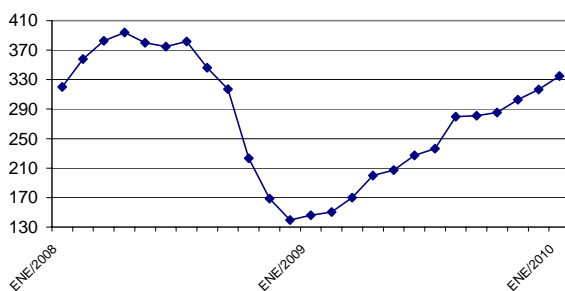
Acumulado / Accumulated:	
Ene-Dic 2008/ Jan-Dec 2008	5,327.6
Ene-Dic 2009/ Jan-Dec 2009	5,389.3
Variación / Variation	1.2%

Exportaciones Chilenas de Cobre (Miles de TMF)

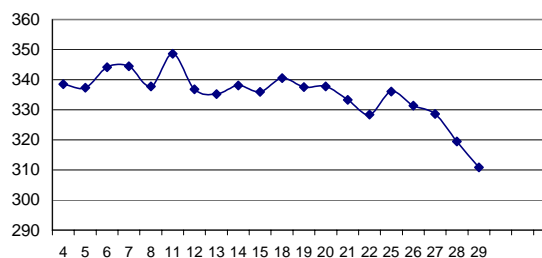
Chilean Copper Exports (Thousands FMT)	
Dic / Dec 2009	492.6

Acumulado / Accumulated:	
Ene-Dic 2008/ Jan-Dec 2008	5,405.3
Ene-Dic 2009/ Jan-Dec 2009	5,420.5
Variación / Variation	0.3%

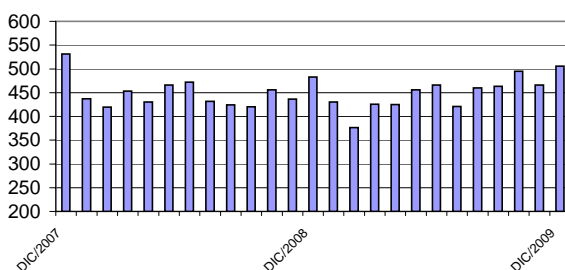
Precio Promedio Mensual Cobre
¢US\$/lb
Copper Monthly Average Price



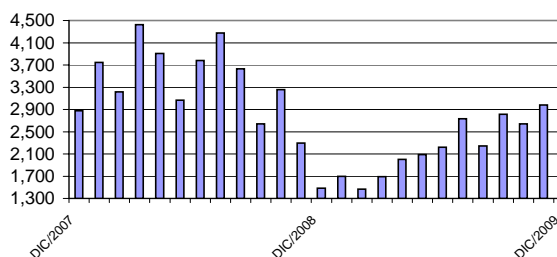
Evolución diaria Precio del Cobre LME
¢US\$/lb; enero 2010
Daily copper price evolution - january 2010



Producción Chilena de Cobre Comercializable
(miles de TMF)
Chilean Copper Production (thousand FMT)



Valor de Exportaciones de Cobre y Subproductos
(Millones de US\$; FOB)
Copper and by-products exports (USD millions; FOB)



**ANTECEDENTES DE PRECIOS /
PRICE INFORMATION**

PRECIO DEL COBRE REFINADO, NOMINAL Y REAL
(Centavos de dólar por libra)
REFINED COPPER PRICES, NOMINAL AND CONSTANT (USD cents/lb.)

	NOMINAL		REAL / CONSTANT(1)	
	B.M.L. / LME	COMEX	B.M.L./ LME	COMEX
ENE/ JAN / 2007	257.171	258.305	279.3	280.5
FEB	257.479	259.661	274.9	277.3
MAR	292.680	292.270	307.9	307.5
ABR/ APR	352.281	350.840	366.1	364.6
MAY	348.457	348.248	358.1	357.9
JUN	339.100	338.764	347.5	347.1
JUL	361.691	361.595	367.9	367.8
AGO/ AUG	340.807	336.783	352.1	347.9
SEP	346.952	345.616	356.2	354.8
OCT	363.256	358.887	370.3	365.9
NOV	316.005	312.924	314.4	311.4
DIC/ DEC	298.812	302.170	298.0	301.3
ENE-DIC/ JAN-DEC	323.246	322.172	332.7	332.0
ENE/ JAN / 2008	320.283	320.171	315.2	315.0
FEB	357.780	358.955	348.8	349.9
MAR	382.800	381.108	362.8	361.2
ABR/ APR	393.942	393.939	367.5	367.5
MAY	380.235	377.421	344.5	341.9
JUN	374.694	368.974	332.8	327.8
JUL	381.655	375.939	330.8	325.8
AGO/ AUG	346.304	343.640	309.9	307.5
SEP	317.100	314.293	286.8	284.3
OCT	223.426	218.565	213.5	208.8
NOV	168.600	168.497	169.8	169.7
DIC/ DEC	139.343	138.798	145.2	144.6
ENE-DIC/ JAN-DEC	315.316	313.358	294.0	292.0
ENE/ JAN / 2009	146.088	147.848	152.0	153.8
FEB	150.353	150.639	158.2	158.5
MAR	170.086	171.698	180.2	181.9
ABR/ APR	199.878	204.614	210.5	215.5
MAY	207.230	210.613	216.1	219.6
JUN	227.429	228.339	232.7	233.6
JUL	236.573	238.555	244.3	246.3
AGO/ AUG	279.653	281.060	284.6	286.0
SEP	281.065	281.479	286.7	287.1
OCT	285.218	287.857	289.8	292.5
NOV	302.800	303.530	303.5	304.2
DIC/ DEC	316.685	318.773	316.7	318.8
ENE-DIC/ JAN-DEC	234.217	235.417	239.6	241.5
ENE/ JAN / 2010	335.035	333.766	335.0	333.8
ENE/ JAN / 2010	335.035	333.766	335.0	333.8
ENE/ JAN / 2009	146.088	147.848	152.0	153.8
VARIACION % / % VARIATION				
ENE/ JAN 2010/2009	129.3	125.7	120.4	117.0

(1) Deflactor: Índice de Precios al por Mayor de Estados Unidos (PPI, all commodities), base diciembre 2009=100./ Deflator: U.S. Producer Price Index (PPI, all Commodities). December 2009 = 100.

PRECIO DEL COBRE REFINADO, NOMINAL Y REAL
(Centavos de dólar por libra)
REFINED COPPER PRICES, NOMINAL AND CONSTANT (USD cents/lb.)

AÑO	NOMINAL		REAL / CONSTANT(1)	
	B.M.L. / LME	COMEX	B.M.L./ LME	COMEX
1935	6.973	N.D.	90.0	N.D.
1936	8.531	N.D.	109.3	N.D.
1937	12.021	N.D.	143.7	N.D.
1938	8.885	N.D.	117.2	N.D.
1939	8.453	N.D.	113.2	N.D.
1940	10.601	N.D.	139.9	N.D.
1941	11.159	N.D.	131.6	N.D.
1942	11.168	N.D.	117.0	N.D.
1943	11.168	N.D.	111.7	N.D.
1944	11.168	N.D.	111.1	N.D.
1945	11.155	N.D.	109.2	N.D.
1946	13.893	N.D.	119.0	N.D.
1947	23.477	N.D.	163.3	N.D.
1948	24.116	N.D.	155.1	N.D.
1949	21.899	N.D.	148.3	N.D.
1950	22.353	N.D.	145.8	N.D.
1551	27.541	N.D.	161.4	N.D.
1952	32.349	N.D.	194.6	N.D.
1953	32.180	N.D.	196.3	N.D.
1954	31.265	N.D.	190.0	N.D.
1955	43.898	42.729	266.8	259.7
1956	41.072	39.821	241.4	234.1
1957	27.455	27.227	156.7	155.4
1958	24.730	25.279	139.4	142.5
1959	29.735	31.153	167.1	175.0
1960	30.751	30.732	172.8	172.7
1961	28.724	29.933	161.9	168.7
1962	29.263	29.227	164.4	164.2
1963	29.301	29.796	165.1	167.9
1964	44.110	42.940	248.6	242.0
1965	58.734	50.461	323.9	278.2
1966	69.465	63.159	371.5	337.8
1967	51.127	50.388	272.6	268.7
1968	56.101	51.125	292.2	266.2
1969	66.563	63.863	333.0	319.5
1970	64.195	61.275	309.8	295.7
1971	49.266	49.050	230.3	229.3
1972	48.556	49.140	217.3	219.9
1973	80.776	78.445	317.5	308.5
1974	93.272	90.156	316.0	305.1
1975	55.942	55.543	170.9	169.4
1976	63.611	64.072	185.1	186.7
1977	59.290	60.294	163.1	165.7
1978	61.886	62.172	157.3	158.2
1979	89.830	88.466	203.6	200.0
1980	99.174	96.758	197.2	192.5
1981	78.949	78.655	143.7	143.0
1982	67.057	65.820	119.6	117.2
1983	72.173	71.901	127.1	126.5
1984	62.449	61.320	107.4	105.3
1985	64.281	60.988	111.0	105.3
1986	62.287	61.649	110.8	109.6
1987	81.086	77.837	139.8	134.6
1988	117.937	114.600	196.4	190.7
1989	129.113	124.911	205.1	198.4
1990	120.879	119.085	184.9	182.4
1991	106.066	104.875	162.1	160.3
1992	103.573	102.721	157.3	156.1
1993	86.713	85.283	130.0	127.8
1994	104.903	107.052	154.6	158.1
1995	133.198	134.717	190.1	192.3
1996	103.894	105.872	145.3	147.8
1997	103.224	103.579	144.1	144.6
1998	74.974	75.077	107.4	107.4
1999	71.380	72.111	101.2	102.2
2000	82.294	83.971	110.4	112.7
2001	71.566	72.567	94.9	96.2
2002	70.647	71.672	96.1	97.4
2003	80.734	81.050	104.0	104.5
2004	130.106	128.972	157.8	156.5
2005	167.087	168.227	188.4	189.8
2006	305.295	308.935	329.3	333.6
2007	323.246	322.172	332.7	332.0
2008	315.316	313.358	294.0	292.0
2009	234.217	235.417	239.6	241.5
ENE/ JAN / 2010	335.035	333.766	335.0	333.8
ENE/ JAN / 2009	146.088	147.848	152.0	153.8
VARIACION %				
ENE/ JAN 2010/2009	129.3	125.7	120.4	117.0

(1) Deflactor: Índice de Precios al por Mayor de Estados Unidos (PPI, all commodities), base diciembre 2009=100/
Deflactor: U.S. Producer Price Index (PPI, all Commodities). December 2009 = 100.

N.D. Información no disponible / Not Available

BOLSA DE METALES DE LONDRES
PRECIO PROMEDIO DEL COBRE REFINADO, NOMINAL
LONDON METAL EXCHANGE - REFINED COPPER AVERAGE PRICE, NOMINAL
(Centavos de dólar por libra. ¢US\$/lb)
PRECIO CONTADO VENDEDOR / SELLER SPOT PRICE

COBRE GRADO "A" / A GRADE COPPER

	PERIODO / PERIOD	ANUAL(1) / ANNUAL	12 MESES / 12 MONTHS
2005	167.087	-	-
2006	305.295	-	-
2007	323.246	-	-
2008	315.316	-	-
2009	234.217	-	-
ENE/ JAN / 2007	257.171	257.171	308.626
FEB	257.479	257.318	311.115
MAR	292.680	269.474	316.775
ABR/ APR	352.281	288.430	321.365
MAY	348.457	300.551	319.996
JUN	339.100	307.027	321.022
JUL	361.691	315.208	322.168
AGO/ AUG	340.807	318.540	321.450
SEP	346.952	321.547	321.525
OCT	363.256	326.072	323.694
NOV	316.005	325.125	323.447
DIC/ DEC	298.812	323.246	323.246
ENE/ JAN / 2008	320.283	320.283	328.756
FEB	357.780	338.595	336.799
MAR	382.800	352.142	344.178
ABR/ APR	393.942	363.089	347.896
MAY	380.235	366.387	350.416
JUN	374.694	367.782	353.382
JUL	381.655	369.938	355.230
AGO/ AUG	346.304	367.125	355.783
SEP	317.100	361.332	353.118
OCT	223.426	346.441	340.406
NOV	168.600	331.176	328.855
DIC/ DEC	139.343	315.316	315.316
ENE/ JAN / 2009	146.088	146.088	300.837
FEB	150.353	148.169	284.149
MAR	170.086	155.822	266.958
ABR/ APR	199.878	166.438	250.613
MAY	207.230	174.037	237.054
JUN	227.429	183.509	224.793
JUL	236.573	191.812	211.603
AGO/ AUG	279.653	202.332	206.334
SEP	281.065	211.497	203.201
OCT	285.218	219.183	208.515
NOV	302.800	226.752	219.497
DIC/ DEC	316.685	234.217	234.217
ENE/ JAN / 2010	335.035	335.035	294.562
PROMEDIO A:/ AVERAGE UP TO:			
Ene/Jan/ 2010	335.035	335.035	294.562
Ene/Jan/ 2009	146.088	146.088	300.837
VARIACION %/ % VARIATION			
Ene/Jan 2010/2009	129.3	129.3	-2.1

(1) Precio promedio a la fecha./ Up to date average price.

Fuente / Source: Elaborado por la Comisión Chilena del Cobre

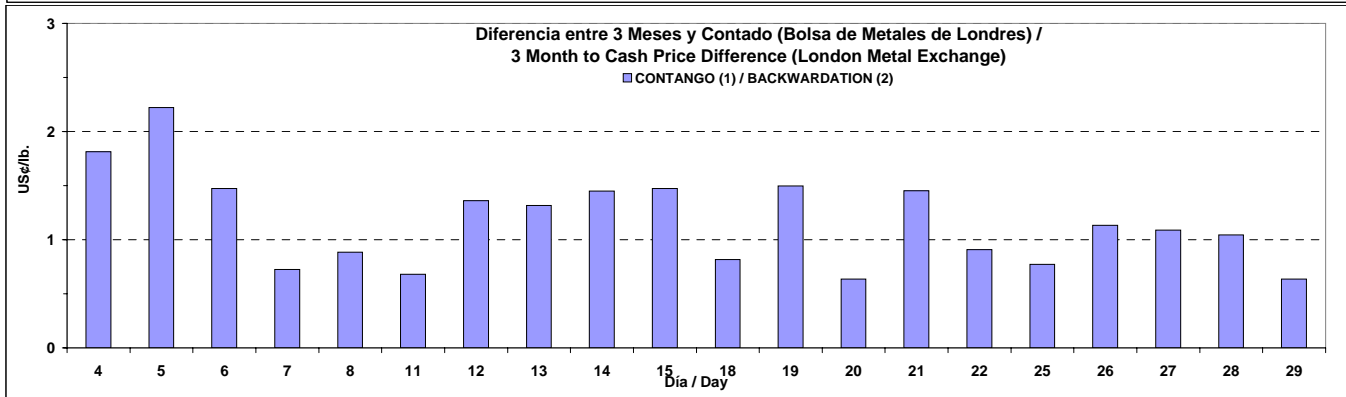
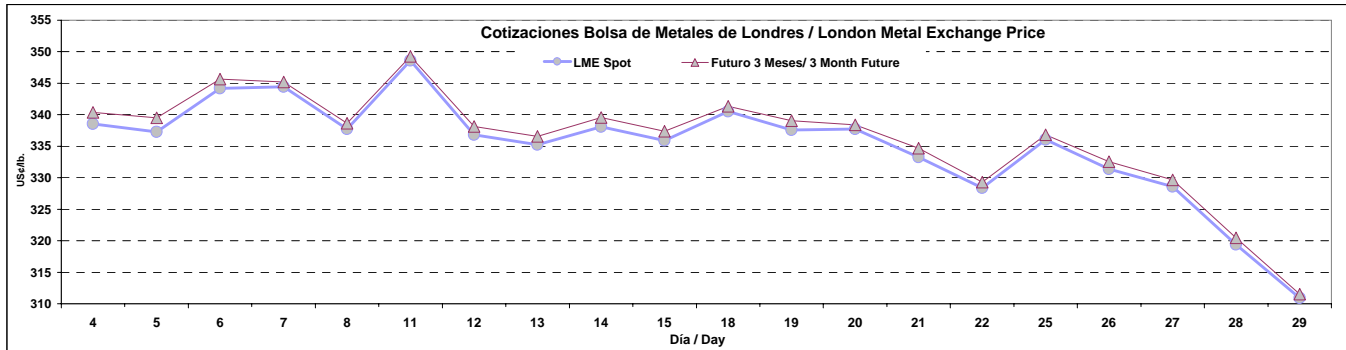
PRECIOS DIARIOS DEL COBRE EN BOLSAS - CATODOS GRADO "A"
EXCHANGES DAILY COPPER PRICES - A GRADE CATHODES
ENERO 2010 / JANUARY 2010

DIA DAY	BOLSA DE METALES DE LONDRES PRECIOS DIARIOS LONDON METAL EXCHANGE REFINED COPPER DAILY PRICES								COMEX NEW YORK MERCANTILE EXCHANGE			
	Dólar por tonelada metrica.(US\$/T.M. - US\$/MT)				Centavos de dólar por libra. ¢US\$/lb				Centavos de dólar por libra. ¢US\$/lb			
	CONTADO/ SPOT	FUTURO/ FUTURE (3m)	FUTURO/ FUTURE (15m)	FUTURO/ FUTURE (27m)	CONTADO/ SPOT	FUTURO/ FUTURE (3m)	FUTURO/ FUTURE (15m)	FUTURO/ FUTURE (27m)	1° Pos 1 Pos	HG 4 Pos	HG 16 Pos	HG 24 Pos
1	Feriado/Holiday											
4	7,464.00	7,504.00	7,555.00	7,550.00	338.561	340.376	342.689	342.462	338.80	341.35	344.45	345.25
5	7,436.00	7,485.00	7,535.00	7,525.00	337.291	339.514	341.782	341.328	339.60	342.10	345.25	346.05
6	7,587.50	7,620.00	7,655.00	7,630.00	344.163	345.637	347.225	346.091	347.75	350.15	352.15	352.15
7	7,594.00	7,610.00	7,615.00	7,555.00	344.458	345.184	345.411	342.689	341.15	343.40	345.60	345.60
8	7,446.00	7,465.50	7,480.00	7,435.00	337.745	338.629	339.287	337.246	338.80	340.75	342.35	341.95
11	7,685.00	7,700.00	7,705.00	7,655.00	348.586	349.266	349.493	347.225	342.85	344.75	345.85	344.90
12	7,425.00	7,455.00	7,465.00	7,425.00	336.792	338.153	338.607	336.792	333.75	335.65	336.65	335.70
13	7,391.00	7,420.00	7,415.00	7,355.00	335.250	336.566	336.339	333.617	338.75	340.70	340.75	338.25
14	7,454.00	7,486.00	7,480.00	7,415.00	338.108	339.559	339.287	336.339	337.60	339.40	339.55	337.70
15	7,405.50	7,438.00	7,425.00	7,355.00	335.908	337.382	336.792	333.617	335.50	337.25	337.75	336.00
18	7,507.00	7,525.00	7,515.00	7,445.00	340.512	341.328	340.875	337.700	Feriado/Holiday			
19	7,442.00	7,475.00	7,460.00	7,395.00	337.564	339.060	338.380	335.432	343.70	345.20	345.30	343.55
20	7,446.00	7,460.00	7,445.00	7,370.00	337.745	338.380	337.700	334.298	334.60	336.10	336.40	334.80
21	7,347.00	7,379.00	7,370.00	7,305.00	333.254	334.706	334.298	331.349	328.50	330.15	330.60	329.00
22	7,240.00	7,260.00	7,260.00	7,195.00	328.401	329.308	329.308	326.360	333.85	335.35	335.85	334.25
25	7,409.00	7,426.00	7,420.00	7,335.00	336.067	336.838	336.566	332.710	338.40	339.95	340.70	339.10
26	7,306.00	7,331.00	7,320.00	7,235.00	331.395	332.529	332.030	328.174	332.90	334.65	335.10	333.50
27	7,244.00	7,268.00	7,250.00	7,155.00	328.582	329.671	328.855	324.545	321.45	323.00	323.60	322.00
28	7,042.00	7,065.00	7,040.00	6,945.00	319.420	320.463	319.329	315.020	309.00	311.35	311.05	309.65
29	6,854.00	6,868.00	6,850.00	6,760.00	310.892	311.527	310.711	306.629	304.60	306.70	305.40	301.20
PROMEDIO / AVERAGE	7,386.25	7,412.03	7,413.00	7,352.00	335.035	336.204	336.248	333.481	333.766	335.682	336.545	335.295

FUENTE / SOURCE: Reuters

NOTA / NOTE: Comex tiene precios desde la posición 1 (mes actual) a la 24 (23 meses en adelante) / Comex prices start at 1st position (current month) and ends at 24th position (23 months ahead).

N.D. Información no disponible/ No data available, No trade /suspended

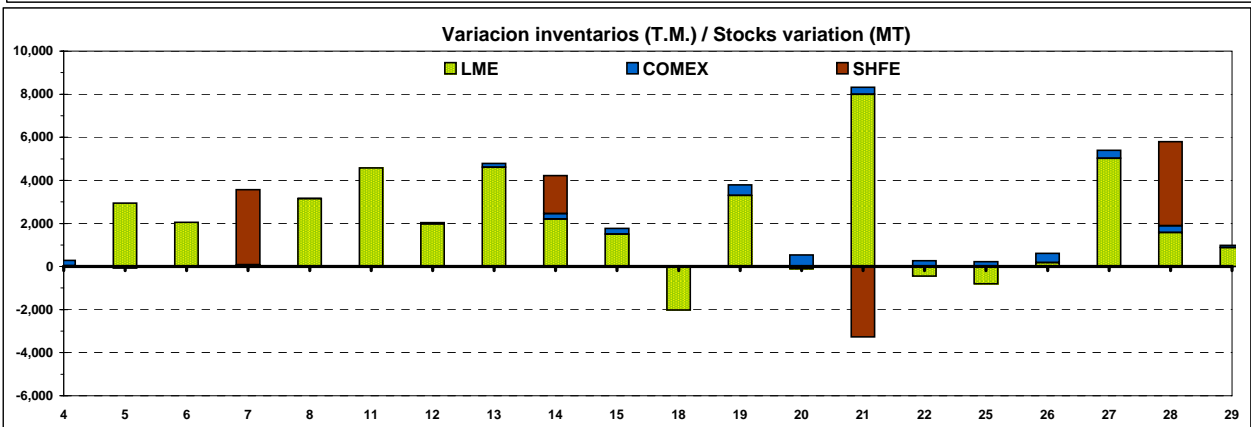
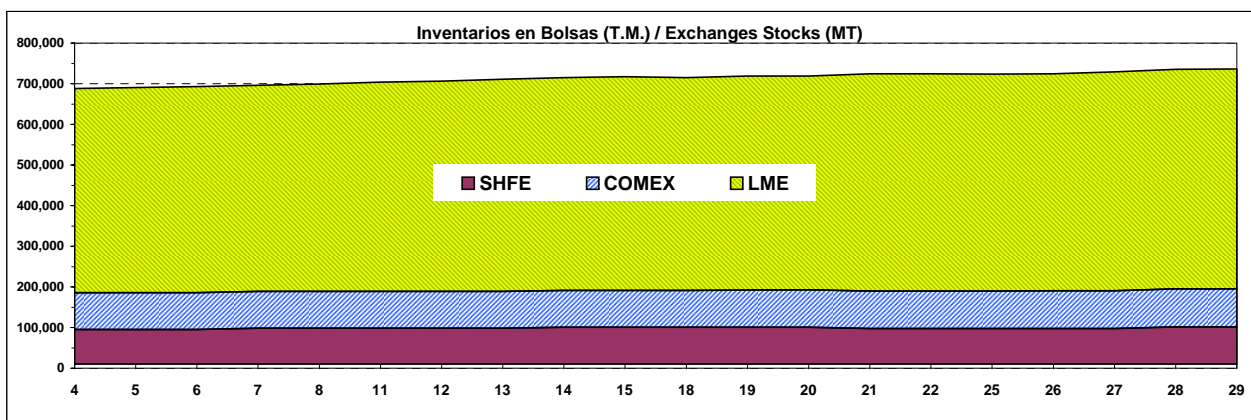


(1) Contango: Precio futuro mayor que precio contado./ Future price higher than spot price

(2) Backwardation: Precio futuro menor que precio contado./ Future price lower than spot price

STOCKS DE COBRE EN BOLSAS - CATODOS GRADO"A"
COPPER WAREHOUSE STOCKS - A GRADE CATHODES
ENERO 2010 / JANUARY 2010
T.M. / M.T.

Stocks fin período	BOLSA DE METALES DE LONDRES/ LONDON METAL EXCHANGE		BOLSA DE NUEVA YORK / NEW YORK MERCANTILE EXCHANGE		BOLSA DE SHANGAI / SHANGHAI FUTURE EXCHANGE		TOTAL	VARIACION
End of period stocks	LME		COMEX		SHFE		TOTAL	VARIACION
T.M./MT	TOTAL	Variación/ Variation	TOTAL	Variación/ Variation	TOTAL	Variación/ Variation	TOTAL	VARIACION
31.12.2008	339,775		31,311		17,822		388,908	
31.12.2009	502,375	162,600	89,976	58,665	95,315	77,493	687,666	298,758
4	502,400	25	90,230	254	95,315	0	687,945	279
5	505,350	2,950	90,145	-85	95,315	0	690,810	2,865
6	507,400	2,050	90,145	0	95,315	0	692,860	2,050
7	507,475	75	90,145	0	98,814	3,499	696,434	3,574
8	510,625	3,150	90,167	22	98,814	0	699,606	3,172
11	515,200	4,575	90,142	-25	98,814	0	704,156	4,550
12	517,175	1,975	90,210	68	98,814	0	706,199	2,043
13	521,775	4,600	90,393	183	98,814	0	710,982	4,783
14	523,975	2,200	90,643	250	100,588	1,774	715,206	4,224
15	525,475	1,500	90,915	272	100,588	0	716,978	1,772
18	523,450	-2,025	90,915	0	100,588	0	714,953	-2,025
19	526,750	3,300	91,412	497	100,588	0	718,750	3,797
20	526,650	-100	91,951	539	100,588	0	719,189	439
21	534,650	8,000	92,274	323	97,308	-3,280	724,232	5,043
22	534,200	-450	92,536	262	97,308	0	724,044	-188
25	533,400	-800	92,768	232	97,308	0	723,476	-568
26	533,575	175	93,211	443	97,308	0	724,094	618
27	538,600	5,025	93,585	374	97,308	0	729,493	5,399
28	540,175	1,575	93,903	318	101,210	3,902	735,288	5,795
29	541,050	875	94,003	100	101,210	0	736,263	975

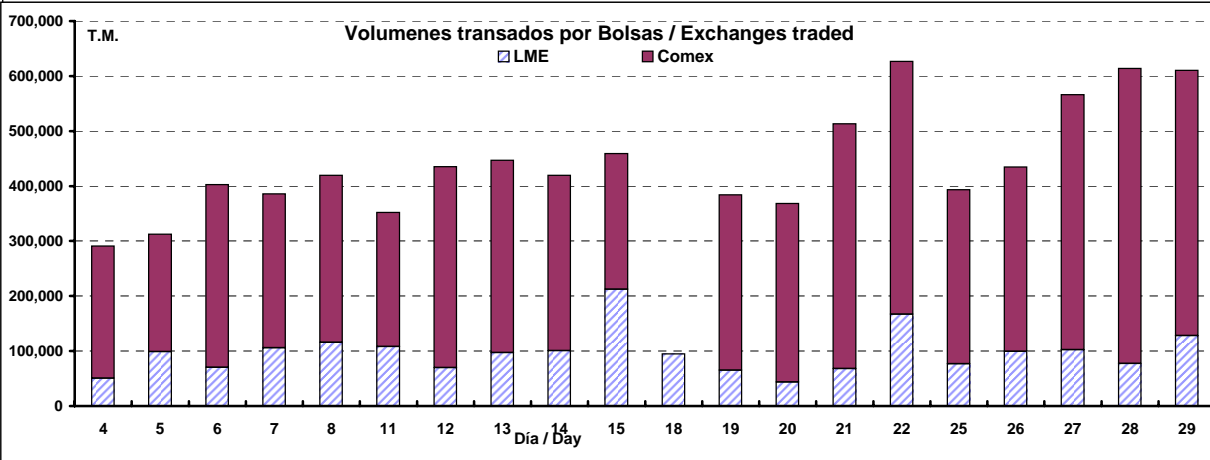
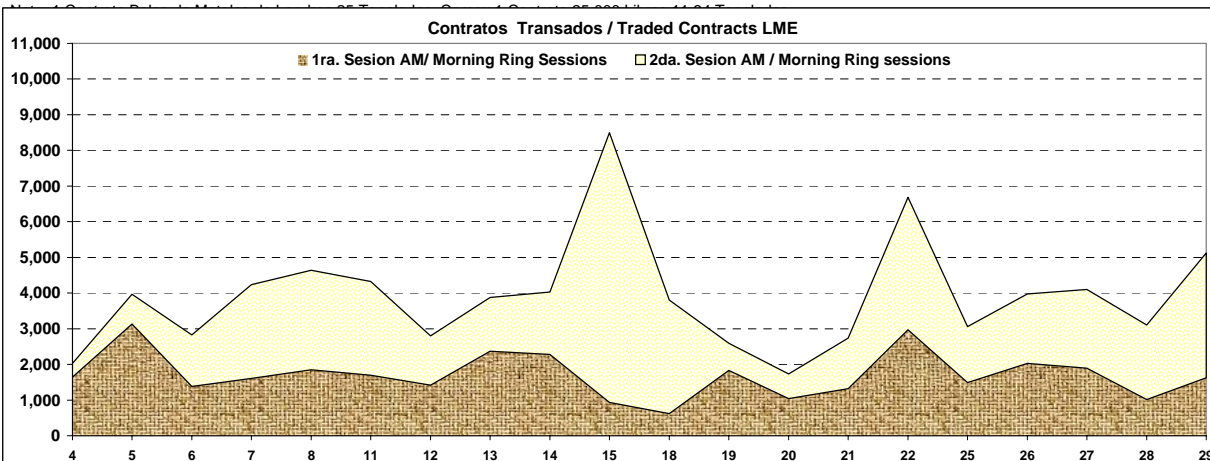


VOLUMENES DE COBRE TRANSADO EN BOLSAS - CATODOS GRADO "A"
COPPER RING VOLUME - A GRADE CATHODES
ENERO 2010 / JANUARY 2010
T.M. / M.T.

DIA DAY	BOLSA DE METALES DE LONDRES/ LONDON METAL EXCHANGE						NEW YORK MERCANTILE EXCHANGE COMEX			
	1ra. Sesión AM/ Morning Ring Sessions			2da. Sesión AM / Morning Ring sessions			Total contratos	TOTAL T.M.	Total contratos	TOTAL T.M.
	1°	2°	Kerb	1°	2°	Kerb	Total contrats	TOTAL MT	Total contracts	TOTAL MT
4	1498	142	ND	11	3	373	2,027	50,675	21,186	240,245
5	2520	610	ND	392	40	402	3,964	99,100	18,839	213,630
6	1266	115	ND	716	120	605	2,822	70,550	29,263	331,837
7	1144	461	ND	618	366	1642	4,231	105,775	24,688	279,957
8	882	967	ND	301	780	1711	4,641	116,025	26,783	303,714
11	1025	671	ND	200	240	2193	4,329	108,225	21,496	243,760
12	856	365	200	570	486	319	2,796	69,900	32,232	365,504
13	2036	330	ND	302	220	992	3,880	97,000	30,867	350,026
14	1114	1168	ND	940	40	766	4,028	100,700	28,098	318,626
15	652	279	ND	571	1886	5113	8,501	212,525	21,756	246,709
18	592	30	ND	1580	742	861	3,805	95,125	Feriado/Holiday	
19	1423	410	ND	195	16	552	2,596	64,900	28,147	319,181
20	832	207	ND	ND	ND	696	1,735	43,375	28,640	324,772
21	1112	206	ND	450	60	905	2,733	68,325	39,218	444,724
22	1879	1087	ND	326	252	3136	6,680	167,000	40,529	459,591
25	1234	252	ND	440	20	1116	3,062	76,550	27,922	316,630
26	1880	146	ND	192	144	1613	3,975	99,375	29,568	335,295
27	1080	810	ND	205	277	1729	4,101	102,525	40,902	463,820
28	719	297	ND	257	375	1454	3,102	77,550	47,318	536,577
29	1460	160	ND	372	1595	1533	5,120	128,000	42,521	482,180

FUENTE / SOURCE: Reuters

N.D. Información no disponible.



Fuente / Source: Elaborado por la Comisión Chilena del Cobre

VOLUMENES E INTERESES ABIERTOS DE FUTUROS Y OPCIONES DE COBRE BOLSA DE METALES DE LONDRES

LONDON METAL EXCHANGE COPPER FUTURES & OPTION VOLUME AND OPEN INTEREST

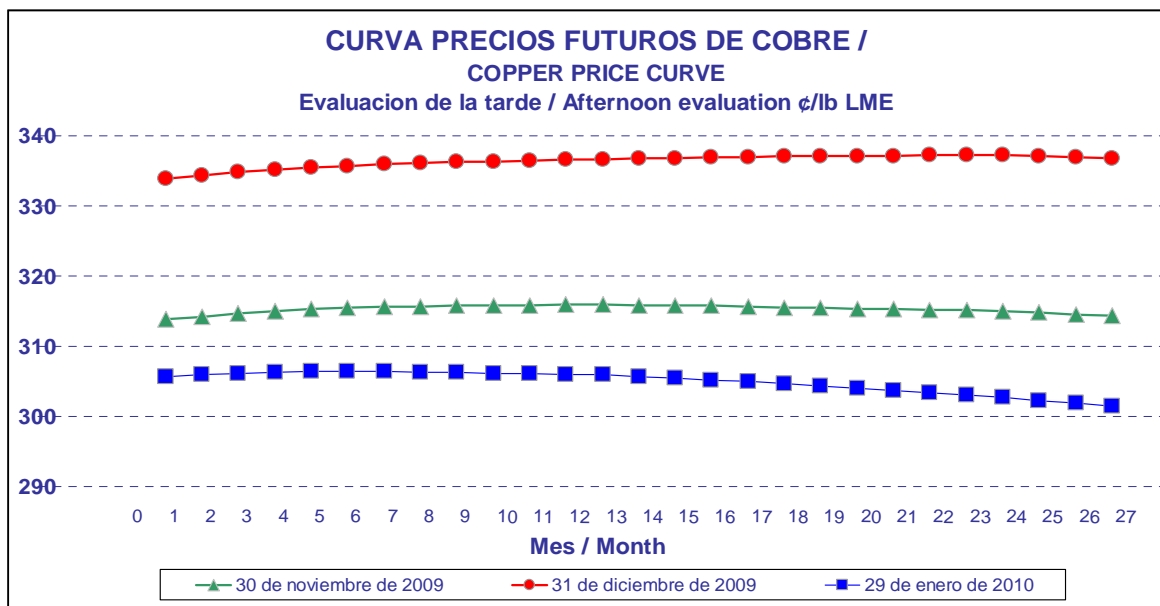
(Numero de contratos / Contract number)

ENERO / JANUARY 2010

Dia / Day	VOLUMEN / VOLUME			INTERESES ABIERTOS / OPEN INTEREST	
	Futuros / Futures	Opciones / Options	TOTAL/ Total	Futuros / Futures	Opciones / Options
04	87,753	15,836	103,589	259,704	195,847
05	97,251	17,058	114,309	258,274	199,345
06	128,714	12,461	141,175	256,843	201,898
07	112,288	28,667	140,955	256,894	208,880
08	110,912	6,524	117,436	256,968	193,303
11	111,454	11,568	123,022	259,899	195,292
12	114,838	18,003	132,841	261,019	198,805
13	118,811	17,597	136,408	261,882	202,306
14	103,896	13,251	117,147	261,871	204,459
15	112,407	6,816	119,223	264,086	206,098
18	108,553	4,246	112,799	257,956	207,129
19	113,679	8,473	122,152	247,972	209,265
20	101,927	21,074	123,001	248,652	211,639
21	119,133	8,784	127,917	250,244	213,916
22	127,873	6,900	134,773	251,357	214,904
25	92,467	12,759	105,226	248,706	217,555
26	87,770	6,736	94,506	250,296	218,977
27	114,535	16,720	131,255	253,436	222,473
28	137,697	22,960	160,657	256,535	227,752
29	168,212	16,417	184,629	257,454	229,969
TOTAL/TOTAL	2,270,170	272,850	2,543,020		

N.D. Información no disponible/ No data available, No trade /suspended

Fuente / Source: Elaborado por la Comisión Chilena del Cobre



PRECIO PROMEDIO DEL COBRE EN ESTADOS UNIDOS, NOMINAL

(Centavos de dólar por libra. ¢US\$/lb)

COPPER AVERAGE PRICE IN USA, NOMINAL

	PRODUCTORES NORTEAMERICANOS North American Producers	COMEX COBRE GRADO "A" A Grade Copper	PRECIO CHATARRA Scrap Price
	W.B.(1)	1er.MES / First Month	Nº 2 (2)
2005	173.493	168.227	17.050
2006	314.751	308.935	41.483
2007	328.002	322.172	36.908
2008	319.163	313.358	30.867
2009	241.243	235.417	25.908
ENE/ JAN / 2007	264.131	258.305	20.000
FEB	265.487	259.661	17.250
MAR	298.096	292.270	20.000
ABR/ APR	356.666	350.840	31.000
MAY	354.074	348.248	37.400
JUN	344.590	338.764	41.750
JUL	367.421	361.595	54.000
AGO/ AUG	342.609	336.783	56.000
SEP	351.442	345.616	46.250
OCT	364.713	358.887	58.000
NOV	318.802	312.924	37.500
DIC/ DEC	307.996	302.170	23.750
ENE/ JAN / 2008	326.000	320.171	25.000
FEB	364.781	358.955	31.250
MAR	386.934	381.108	38.250
ABR/ APR	399.765	393.939	33.000
MAY	383.247	377.421	38.750
JUN	374.800	368.974	36.250
JUL	381.765	375.939	41.600
AGO/ AUG	349.211	343.640	26.500
SEP	320.119	314.293	16.250
OCT	224.391	218.565	30.800
NOV	174.323	168.497	31.750
DIC/ DEC	144.624	138.798	21.000
ENE/ JAN / 2009	153.674	147.848	17.500
FEB	156.465	150.639	13.250
MAR	177.524	171.698	11.000
ABR/ APR	210.440	204.614	10.800
MAY	216.439	210.613	11.500
JUN	234.165	228.339	22.600
JUL	244.381	238.555	29.500
AGO/ AUG	286.886	281.060	37.250
SEP	287.305	281.479	36.200
OCT	293.683	287.857	37.000
NOV	309.356	303.530	43.500
DIC/ DEC	324.599	318.773	40.800
ENE/ JAN / 2010	339.592	333.766	35.500
Ene-/Jan-/ 2010	339.592	333.766	35.500
Ene-/Jan-/ 2009	153.674	147.848	17.500
VARIACION % / % VARIATION			
Ene-/Jan-/ 2010-2009	121.0	125.7	102.9

(1) Cotización/ Quotation Producer Delivered-Metals Week.

(2) Chatarra Nº 2 de Estados Unidos: Cotización MW Nº 2 Scrap. Las cifras corresponden a descuento respecto al cobre refinado./ US MW Nº 2 Scrap. Figures refer to discount over price of refined copper.

FUENTE/ SOURCE: Metals Week, Reuters.

PRECIOS PROMEDIOS METALES PRECIOSOS, NOMINALES

(US\$ / onza troy)

PRECIOS METALS AVERAGE PRICES, NOMINAL

	PLATA / SILVER		ORO / GOLD			PLATINO/ PLATINUM
	REINO UNIDO (1)	ESTADOS UNIDOS (2)	REINO UNIDO/ UK		ESTADOS UNIDOS (2)	REINO UNIDO (3)
	UK	USA	INICIAL / INITIAL	FINAL / LAST	USA	UK
2005	7.31	7.34	444.9	444.9	444.8	896.9
2006	11.57	11.57	604.7	604.3	604.0	1,141.7
2007	13.39	13.41	696.9	696.7	696.9	1,304.8
2008	15.02	15.00	872.5	871.7	871.1	1,576.4
2009	14.65	14.69	973.0	973.0	972.2	1,204.1
ENE/ JAN / 2007	12.84	12.87	630.4	631.2	630.9	1,148.4
FEB	13.91	13.95	665.1	664.7	664.4	1,204.6
MAR	13.18	13.16	655.9	654.9	654.9	1,218.8
ABR/ APR	13.74	13.73	680.0	679.4	679.2	1,278.4
MAY	13.15	13.19	668.3	666.9	667.9	1,301.3
JUN	13.14	13.15	655.7	655.5	655.4	1,286.2
JUL	12.91	12.95	665.3	665.3	665.8	1,303.1
AGO/ AUG	12.36	12.33	664.5	665.4	665.2	1,264.7
SEP	12.83	12.93	710.6	712.7	714.8	1,307.7
OCT	13.67	13.72	754.5	754.6	754.6	1,410.7
NOV	14.70	14.67	808.3	806.2	805.9	1,448.7
DIC/ DEC	14.30	14.31	803.6	803.2	803.2	1,484.9
ENE/ JAN / 2008	15.96	16.06	887.8	889.6	890.5	1,585.8
FEB	17.57	17.67	924.3	922.3	923.3	1,999.7
MAR	19.51	19.22	971.1	968.4	966.3	2,046.5
ABR/ APR	17.50	17.51	911.6	909.7	909.7	1,988.4
MAY	17.05	17.05	889.1	888.7	887.6	2,054.7
JUN	16.97	17.04	889.5	889.5	889.5	2,038.2
JUL	18.03	18.06	941.2	939.8	940.2	1,904.4
AGO/ AUG	14.69	14.58	840.4	839.0	838.3	1,488.5
SEP	12.37	12.19	824.9	829.9	830.3	1,223.0
OCT	10.44	10.43	812.8	806.6	806.6	912.6
NOV	9.87	9.87	757.9	760.9	754.9	840.3
DIC/ DEC	10.29	10.32	819.9	816.1	816.1	834.8
ENE/ JAN / 2009	11.29	11.40	857.7	858.7	860.0	949.8
FEB	13.41	13.44	939.8	943.2	943.2	1,035.7
MAR	13.12	13.12	926.0	924.3	924.3	1,081.2
ABR/ APR	12.51	12.52	892.7	890.2	890.5	1,162.5
MAY	14.03	14.11	926.9	928.6	927.3	1,130.4
JUN	14.65	14.66	947.8	945.7	945.7	1,217.9
JUL	13.36	13.39	934.3	934.2	934.3	1,162.3
AGO/ AUG	14.35	14.43	949.5	949.4	949.3	1,244.6
SEP	16.39	16.49	996.4	996.6	996.8	1,288.7
OCT	17.24	17.26	1,043.5	1,043.2	1,043.2	1,332.8
NOV	17.82	17.88	1,126.1	1,127.0	1,122.0	1,400.6
DIC/ DEC	17.67	17.64	1,135.0	1,134.7	1,130.4	1,442.3
ENE/ JAN / 2010	17.79	17.75	1,119.6	1,118.0	1,117.1	1,562.8
Ene-/Jan-/ 2010	17.79	17.75	1,119.58	1,117.96	1,117.09	1,562.75
Ene-/Jan-/ 2009	11.29	11.40	857.73	858.69	859.98	949.76
VARIACION % / % VARIATION						
Ene-/Jan-/ 2010-2009	57.5	55.7	30.5	30.2	29.9	64.5

(1) Cotización London Spot.

(2) Cotización Handy & Harman N.Y.

(3) Promedio Cotización London fixing P.M. / Average

FUENTE/ SOURCE: Metals Week.Reuters.

PRECIOS DIARIOS ORO: ENERO 2010

(US\$ / onza troy)

GOLD DAILY PRICES: JUNAURY 2010

DIA/ DAY	REINO UNIDO/ UK (1)		COMEX	EE.UU. / USA	EE.UU. / USA
	INICIAL / INITIAL	FINAL / LAST	1°Pos / 1 St Pos (US\$/oz)		(2)
1	Feriado/Holiday	Feriado/Holiday		Feriado/Holiday	Feriado/Holiday
2					
3					
4	1,113.00	1,121.50		1,117.70	1,121.50
5	1,125.25	1,123.25		1,118.10	1,123.25
6	1,125.00	1,130.00		1,135.90	1,130.00
7	1,130.75	1,130.25		1,133.10	1,130.25
8	1,121.75	1,126.75		1,138.20	1,126.75
9					
10					
11	1,158.00	1,153.00		1,150.70	1,153.00
12	1,152.75	1,151.25		1,128.90	1,151.25
13	1,132.75	1,127.25		1,136.40	1,127.25
14	1,137.50	1,138.25		1,142.60	1,138.25
15	1,132.00	1,128.00		1,130.10	1,128.00
16					
17					
18	1,135.75	1,134.50		Feriado/Holiday	Feriado/Holiday
19	1,134.00	1,133.00		1,139.70	1,133.00
20	1,129.00	1,120.25		1,112.30	1,120.25
21	1,104.00	1,108.25		1,102.70	1,108.25
22	1,096.50	1,084.00		1,089.20	1,084.00
23					
24					
25	1,103.50	1,095.25		1,095.20	1,095.25
26	1,090.75	1,093.25		1,097.90	1,093.25
27	1,094.75	1,094.75		1,084.40	1,094.75
28	1,091.75	1,088.00		1,083.60	1,088.00
29	1,082.75	1,078.50		1,083.00	1,078.50
30					
31					
PROMEDIO MES/ MONTH AVG	1,119.575	1,117.963		1,116.826	1,117.092

(1) Cotización London

(2) Cotización Handy & Harman N.Y.

Fuente / Source: Reuters. Elaborado por la Comisión Chilena del Cobre

PRECIOS DIARIOS PLATA ENERO 2010

(US\$ / onza troy)

SILVER DAILY PRICES: JUNAURY 2010

DIA/ DAY	REINO UNIDO/ UK (1)	COMEX EE.UU./ USA 1 Pos / 1 St Pos (US\$/oz)	Handy & Harman N.Y. (2)
1	Feriado/Holiday	Feriado/Holiday	Feriado/Holiday
2			
3			
4	17.1700	17.4400	17.4700
5	17.5700	17.7810	17.8500
6	17.8900	18.1630	18.1700
7	18.0900	18.3330	18.2700
8	18.1200	18.4580	18.4400
9			
10			
11	18.8400	18.6830	18.7300
12	18.4100	18.2430	18.4750
13	18.3500	18.5380	18.4750
14	18.5800	18.6430	18.5550
15	18.5200	18.4110	18.4750
16			
17			
18	18.6600	Feriado/Holiday	Feriado/Holiday
19	18.5000	18.7840	18.7050
20	18.4800	17.8660	17.8700
21	17.6800	17.4960	17.5300
22	17.2800	16.9180	17.1400
23			
24			
25	17.1600	17.1310	17.1150
26	16.7900	16.8460	16.8550
27	16.7400	16.4280	16.6850
28	16.6200	16.2020	16.3300
29	16.2900	16.1830	16.1200
30			
31			
PROMEDIO MES/ MONTH AVG	17.78700	17.71300	17.75053

(1) Cotización London Spot.

(2) Cotización Handy & Harman N.Y.

Fuente / Source: Reuters. Elaborado por la Comisión Chilena del Cobre

PRECIOS PROMEDIOS OTROS METALES, NOMINALES

(Centavos de dólar por libra. ¢US\$/lb)

OTHER METALS AVERAGE PRICES, NOMINAL

	ALUMINIO/ALUMINIUM		PLOMO/ LEAD		ZINC		ESTAÑO/ TIN		NIQUEL/NICKEL		MOLIBDENO/ MOLYBDENUM	
	B.M.L/ LME HG SETTL.	EE.UU./USA(1)	B.M.L/ LME SETTL.	B.M.L/ LME SHG SETTL.	B.M.L/ LME EE.UU./USA(2)	B.M.L/ LME SETTL.	B.M.L/ LME EE.UU./USA(2)	B.M.L/ LME SETTL.	B.M.L/ LME EE.UU./USA(2)	OXIDO/ OXIDE (US\$/lb) EE.UU./ USA(3)		
2005	86.1	91.1	44.3	62.7	360.9	668.8	681.4	31.73				
2006	116.6	121.4	58.5	148.6	419.5	1100.2	1098.2	24.75				
2007	119.7	122.2	117.0	147.1	679.5	1688.7	1690.5	30.23				
2008	116.7	120.5	94.8	85.0	864.5	957.6	987.4	28.73				
2009	75.5	79.4	78.0	75.1	641.5	664.7	692.6	11.12				
ENE/ JAN / 2007	127.4	129.5	75.6	171.8	531.1	1,669.7	1,617.7	25.01				
FEB	128.5	129.5	80.7	150.1	606.3	1,868.1	1,830.9	25.45				
MAR	125.3	129.0	86.8	148.4	649.1	2,101.3	2,123.8	27.96				
ABR/ APR	127.7	130.8	90.8	161.4	656.1	2,280.1	2,313.9	28.04				
MAY	126.8	129.3	95.3	173.7	665.7	2,366.8	2,373.7	31.64				
JUN	121.5	123.4	110.0	163.4	663.1	1,892.3	1,849.1	32.69				
JUL	124.0	126.2	139.9	160.9	692.5	1,516.2	1,528.5	31.53				
AGO/ AUG	114.1	117.4	141.5	147.5	708.5	1,254.3	1,268.0	31.69				
SEP	108.5	111.3	146.4	130.7	698.9	1,339.8	1,329.1	31.60				
OCT	110.8	113.5	168.7	135.0	747.8	1,408.7	1,422.5	31.86				
NOV	113.7	116.4	151.0	115.3	775.1	1,388.5	1,417.8	32.95				
DIC/ DEC	108.0	110.7	117.8	106.7	759.8	1,179.0	1,210.5	32.38				
ENE/ JAN / 2008	110.9	113.6	118.3	106.1	764.0	1,256.0	1,268.6	33.03				
FEB	126.0	128.6	139.7	110.6	804.1	1,268.0	1,296.2	33.35				
MAR	136.3	139.9	136.5	113.9	921.4	1,416.4	1,429.6	33.40				
ABR/ APR	134.2	138.6	128.0	102.7	1,001.8	1,304.7	1,345.2	32.85				
MAY	131.7	135.8	101.4	99.0	1,100.8	1,167.3	1,232.7	32.67				
JUN	134.2	137.4	84.5	85.9	1,033.4	1,022.8	1,048.3	33.35				
JUL	139.3	142.6	88.2	84.0	1,063.0	914.5	948.4	33.67				
AGO/ AUG	125.4	129.0	87.3	78.2	945.4	858.6	878.8	33.84				
SEP	114.6	119.2	84.7	78.7	862.2	807.2	854.1	32.92				
OCT	96.2	101.9	67.1	59.1	680.1	550.7	569.4	26.12				
NOV	84.0	88.1	58.6	52.3	657.4	485.4	510.2	10.00				
DIC/ DEC	67.6	71.5	43.7	49.9	540.8	439.4	467.3	9.60				
ENE/ JAN / 2009	64.1	67.6	51.4	53.9	546.5	512.9	534.6	9.33				
FEB	60.3	62.9	49.9	50.4	524.2	472.1	497.2	8.83				
MAR	60.6	63.8	56.2	55.2	509.2	439.8	472.9	8.42				
ABR/ APR	64.4	67.9	62.7	62.5	559.0	506.5	515.9	8.03				
MAY	66.2	70.0	65.3	67.3	649.0	573.1	589.1	9.51				
JUN	71.4	74.6	76.0	70.6	704.7	678.6	698.9	10.34				
JUL	75.7	79.7	76.1	71.6	657.5	725.1	746.7	12.71				
AGO/ AUG	87.7	92.1	86.2	82.6	698.6	890.9	920.5	17.41				
SEP	83.2	88.3	100.0	85.5	706.9	792.6	855.4	14.40				
OCT	85.2	89.4	101.6	94.0	709.6	840.3	863.2	12.12				
NOV	88.4	93.1	104.7	99.5	703.7	770.7	814.5	11.03				
DIC/ DEC	98.9	103.8	105.6	107.8	729.2	774.1	802.8	11.38				
ENE/ JAN / 2010	101.4	106.9	107.4	110.4	830.4	836.4	883.1	14.51				
Ene-/Jan-/ 2010	101.4	106.9	107.4	110.4	830.4	836.4	883.1	14.5				
Ene-/Jan-/ 2009	64.1	67.6	51.4	53.9	546.5	512.9	534.6	9.3				
VARIACION % / % VARIATION												
Ene-/Jan-/ 2010-2009	58.2	58.0	109.1	105.0	51.9	63.1	65.2	55.6				

(1) Mercado / MW US Market.

(2) Promedio / MW NY Dealer.

(3) Promedio / MW Mean.

FUENTE/ SOURCE: Metals Week, Reuters.

BOLSA DE METALES DE LONDRES
PRECIOS DIARIOS OTROS METALES: ENERO 2010
(Centavos de dólar por libra. ¢US\$/lb)
OTHER METALS DAILY PRICES LME: JANUARY 2010
¢US\$/lb.

DIA/DAY	ESTAÑO/ TIN		PLOMO/ LEAD		ZINC		ALUMINIO/ ALUMINIUM		NIQUEL/ NICKEL	
	Contado/ Spot	Futuro/ Future	Contado/ Spot	Futuro/ Future	Contado/ Spot	Futuro/ Future	Contado/ Spot	Futuro/ Future	Contado/ Spot	Futuro/ Future
1	Feriado/Holiday		Feriado/Holiday		Feriado/Holiday		Feriado/Holiday		Feriado/Holiday	
2										
3										
4	791.52	796.06	111.20	112.72	116.80	118.30	100.95	102.47	855.25	860.69
5	789.48	795.60	110.68	112.49	114.60	115.92	101.92	103.44	844.36	846.86
6	793.79	797.19	117.12	118.61	118.75	120.18	104.46	105.87	859.79	864.09
7	801.95	805.13	117.53	118.84	119.50	120.66	104.64	106.03	850.49	855.02
8	789.93	792.65	114.49	115.35	114.71	115.71	102.58	103.99	822.14	822.59
9										
10										
11	808.53	811.93	116.85	117.75	116.98	118.43	105.26	106.91	830.07	832.34
12	804.22	808.53	109.52	110.68	112.81	113.99	102.54	103.99	805.81	809.66
13	803.99	805.13	110.45	111.58	112.36	113.78	102.08	103.56	804.45	807.40
14	825.54	829.62	111.18	112.26	113.06	114.22	104.01	105.55	832.34	834.61
15	821.00	821.00	110.68	111.63	110.70	112.24	103.51	105.05	831.21	832.34
16										
17										
18	813.29	816.69	111.20	112.49	111.90	113.60	103.99	105.26	845.27	850.49
19	799.68	802.86	109.79	110.90	111.52	112.36	101.76	103.08	845.72	846.40
20	814.20	815.33	109.11	109.82	111.97	112.95	102.24	103.60	861.15	864.55
21	812.38	815.11	103.10	104.05	111.09	112.02	101.13	102.42	852.98	857.29
22	803.99	802.86	101.02	101.92	105.42	106.30	99.31	100.70	837.11	839.60
23										
24										
25	805.13	807.40	101.38	102.29	105.39	106.35	100.58	101.90	833.48	836.88
26	805.13	805.58	98.23	99.52	104.67	105.55	99.31	100.56	829.85	830.07
27	813.07	814.20	97.07	98.11	102.26	103.15	97.48	99.09	813.52	816.01
28	800.59	801.73	94.78	95.48	97.77	98.43	96.43	97.75	823.27	825.54
29	773.15	775.64	93.21	94.62	96.25	96.77	93.51	95.07	849.58	850.49
30										
31										
PROMEDIO MES										
MONTH AVG	803.528	806.011	107.428	108.556	110.425	111.544	101.385	102.814	836.390	839.146

Fuente / Source: Reuters. Elaborado por la Comisión Chilena del Cobre

PARIDADES MONEDAS EXTRANJERAS, PROMEDIOS BANCO CENTRAL DE CHILE

PARITY CENTRAL BANK OF CHILE

PERIODO/ PERIOD	US\$ / L	EURO / US\$	YEN / US\$	Observado/ Observed \$/ US\$
2005	1.81820	0.80432	110.059	559.77
2006	1.83969	0.79692	116.317	530.28
2007	2.00116	0.73088	117.756	522.47
2008	1.83549	0.68332	103.470	522.46
2009	1.56432	0.71965	93.551	559.61
ENE/ JAN / 2007	1.95822	0.76952	120.378	540.51
FEB	1.95844	0.76494	120.569	542.27
MAR	1.94707	0.75531	117.349	538.49
ABR/ APR	1.98673	0.74065	118.852	532.30
MAY	1.98403	0.73989	120.727	522.02
JUN	1.98551	0.74530	122.580	526.72
JUL	2.03388	0.72920	121.627	519.80
AGO/ AUG	2.01250	0.73360	116.879	522.92
SEP	2.02138	0.72067	115.009	516.91
OCT	2.04286	0.70340	115.787	501.44
NOV	2.07068	0.68121	110.973	506.95
DIC/ DEC	2.02054	0.68692	112.343	499.28
ENE/ JAN / 2008	1.96882	0.67966	107.962	480.90
FEB	1.96416	0.67854	107.202	467.22
MAR	2.00176	0.64536	101.006	442.94
ABR/ APR	1.98050	0.63444	102.483	446.43
MAY	1.96523	0.64285	104.335	470.10
JUN	1.96664	0.64275	106.801	493.61
JUL	1.98836	0.63454	106.918	502.24
AGO/ AUG	1.89385	0.66661	109.309	516.70
SEP	1.79885	0.69498	106.737	530.17
OCT	1.69727	0.74962	100.507	618.39
NOV	1.53375	0.78508	96.995	651.51
DIC/ DEC	1.49060	0.74547	91.378	649.32
ENE/ JAN / 2009	1.44425	0.75230	90.214	623.01
FEB	1.44092	0.78050	92.440	606.00
MAR	1.41804	0.76780	97.651	592.93
ABR/ APR	1.46994	0.75760	98.868	583.18
MAY	1.53799	0.73380	96.628	565.72
JUN	1.63506	0.71360	96.631	553.08
JUL	1.63639	0.71070	94.496	540.42
AGO/ AUG	1.65481	0.70113	94.930	546.88
SEP	1.63239	0.68770	91.548	549.07
OCT	1.61865	0.67530	90.334	545.83
NOV	1.65893	0.67110	89.313	507.78
DIC/ DEC	1.62443	0.68430	89.556	501.45
ENE/ JAN / 2010	1.61577	0.69950	91.175	500.66
Ene-/Jan-/ 2010	1.61577	0.69950	91.175	500.66
Ene-/Jan-/ 2009	1.44425	0.75230	90.214	623.01
VARIACION % / % VARIATION Ene-/Jan-/ 2010-2009	11.9	-7.0	1.1	-19.6

FUENTE/ SOURCE: Banco Central de Chile, Reuters.

**ANTECEDENTES DE PRODUCCION Y
EXPORTACIONES /
PRODUCTION AND EXPORTS INFORMATION**

PRODUCCION CHILENA DE COBRE Y MOLIBDENO COMERCIALIZABLE
CHILEAN COPPER AND MOLYBDENUM PRODUCTION

	PRODUCCION DE COBRE / COPPER PRODUCTION(1) (Miles de T.M.de Cobre Fino) / (Thousand MT of fine copper)				MOLIBDENO / MOLYBDENUM(3) (T.M. de Fino) / (MT of fine molybdenum)			
	MINA MINE	FUNDICION SMELTER	REFINADO / REFINED COPPER		CONCENT.	OXIDOS OXIDES	TOTAL	
			SX-EW	OTROS(2) OTHER				TOTAL
2004	5,412.5	1,517.6	1,636.3	1,200.4	2,836.7	33,544.2	8,339.0	41,883.2
2005	5,320.5	1,558.1	1,584.6	1,239.4	2,824.0	39,069.7	8,971.0	48,040.7
2006	5,360.8	1,565.4	1,691.8	1,119.5	2,811.3	36,080.6	7,197.0	43,277.6
2007	5,557.0	1,514.3	1,832.1	1,104.4	2,936.5	37,668.1	7,244.0	44,912.1
2008	5,327.6	1,369.2	1,971.0	1,086.6	3,057.6	28,024.5	5,662.0	33,686.5
ENE/ JAN / 2006	415.1	101.6	137.0	92.8	229.8	2,517.2	412.0	2,929.2
FEB	388.3	94.7	124.2	86.0	210.2	2,259.1	714.0	2,973.1
MAR	441.0	121.9	142.0	94.4	236.4	3,147.3	488.0	3,635.3
ABR/ APR	443.6	133.4	131.4	93.7	225.1	2,801.6	690.0	3,491.6
MAY	459.1	140.0	139.1	95.9	235.0	3,366.8	501.0	3,867.8
JUN	447.9	134.4	135.8	91.2	227.0	2,706.5	668.0	3,374.5
JUL	459.8	129.9	144.9	95.4	240.3	2,666.1	656.0	3,322.1
AGO/ AUG	411.7	136.2	135.9	93.8	229.7	3,274.4	299.0	3,573.4
SEP	392.5	134.6	136.8	90.8	227.6	3,306.7	418.0	3,724.7
OCT	490.5	146.2	153.0	95.7	248.7	3,536.6	643.0	4,179.6
NOV	479.0	135.7	148.3	90.2	238.5	3,277.4	802.0	4,079.4
DIC/ DEC	532.3	156.8	163.4	99.6	263.0	3,220.9	906.0	4,126.9
ENE/ JAN / 2007	445.2	113.0	162.6	93.9	256.5	2,855.1	261.0	3,116.1
FEB	388.8	90.8	148.1	82.2	230.3	2,025.1	702.0	2,727.1
MAR	498.1	148.8	153.5	107.0	260.5	3,127.0	790.0	3,917.0
ABR/ APR	454.9	132.5	158.4	98.3	256.7	3,464.5	644.0	4,108.5
MAY	476.1	134.7	159.6	100.4	260.0	3,008.3	612.0	3,620.3
JUN	457.9	129.5	146.5	93.9	240.4	3,247.1	547.0	3,794.1
JUL	451.8	93.5	146.8	72.5	219.3	3,196.1	780.0	3,976.1
AGO/ AUG	427.5	116.3	142.5	72.8	215.3	3,055.7	638.0	3,693.7
SEP	474.5	149.4	150.4	103.2	253.6	3,694.9	427.0	4,121.9
OCT	482.0	140.5	155.6	93.1	248.7	3,496.8	599.0	4,095.8
NOV	469.0	125.1	145.9	90.1	236.0	2,868.4	481.0	3,349.4
DIC/ DEC	531.2	140.2	162.2	97.0	259.2	3,629.1	763.0	4,392.1
ENE/ JAN / 2008	437.0	101.7	160.7	81.2	241.9	3,443.7	87.0	3,530.7
FEB	419.4	117.9	148.2	88.7	236.9	2,096.5	744.0	2,840.5
MAR	453.2	118.5	157.1	89.0	246.1	2,492.2	908.0	3,400.2
ABR/ APR	430.0	97.4	157.5	77.5	235.0	1,671.7	730.0	2,401.7
MAY	465.9	113.6	168.0	91.9	259.9	1,730.7	30.0	1,760.7
JUN	472.0	114.9	162.5	93.8	256.3	1,987.5	769.0	2,756.5
JUL	431.6	115.7	158.4	99.1	257.5	2,352.2	618.0	2,970.2
AGO/ AUG	424.2	110.3	165.1	95.5	260.6	2,112.5	383.0	2,495.5
SEP	419.9	108.7	157.1	89.1	246.2	2,165.1	304.0	2,469.1
OCT	455.7	121.6	173.5	101.5	275.0	2,575.3	299.0	2,874.3
NOV	436.2	112.0	174.8	84.0	258.8	2,380.9	167.0	2,547.9
DIC/ DEC	482.5	136.9	188.1	95.3	283.4	3,016.2	623.0	3,639.2
ENE/ JAN / 2009 (P)	430.1	110.6	182.1	91.7	273.8	2,218.7	654.0	2,872.7
FEB	376.4	98.5	163.5	88.6	252.1	1,838.5	693.0	2,531.5
MAR	425.5	103.4	178.9	97.5	276.4	2,628.4	617.0	3,245.4
ABR/ APR	425.1	111.5	174.5	99.5	274.0	1,894.5	702.0	2,596.5
MAY	455.8	131.9	176.9	97.1	274.0	1,942.1	754.0	2,696.1
JUN	465.8	128.2	176.5	96.4	272.9	2,477.6	479.0	2,956.6
JUL	421.2	126.1	176.2	100.2	276.4	2,222.1	367.0	2,589.1
AGO/ AUG	459.8	134.5	178.8	100.8	279.6	2,448.0	711.0	3,159.0
SEP	463.2	135.6	183.7	95.7	279.4	2,583.6	726.0	3,309.6
OCT	494.7	154.2	177.1	101.4	278.5	2,636.0	587.0	3,223.0
NOV	466.1	139.3	169.8	92.9	262.7	2,755.9	308.0	3,063.9
DIC/ DEC	505.6	148.5	174.4	97.3	271.7	2,145.5	536.0	2,681.5
ENE-DIC/ JAN-DEC / 2009 (P)	5,389.3	1,522.3	2,112.4	1,159.1	3,271.5	27,790.9	7,134.0	34,924.9
ENE-DIC/ JAN-DEC / 2008 (P)	5,327.6	1,369.2	1,971.0	1,086.6	3,057.6	28,024.5	5,662.0	33,686.5
VARIACION % / % VARIATION								
ENE-DIC/ JAN-DEC/ 2009-2008	1.2	11.2	7.2	6.7	7.0	-0.8	26.0	3.7

(P) Cifras provisionarias./ Provisional figures

(1) A contar del Boletín Agosto 2002, la Producción de Cobre se presenta como: Mina, Fundición y Refinería, de acuerdo a la clasificación usada internacionalmente/ Since 2002 August Bulletin, Copper Production is shown as: Mine, Smelter and refinery, according to the international classification.

(2) Incluye cobre electrorrefinado y cobre refinado a fuego/ Includes electro-refined and fire refined copper.

(3) Corresponde a la producción en las plantas de Codelco-Chile, de Disputada de las Condes (A contar de Agosto de 1994) y de Pelambres (A contar de Enero de 2000). / Corresponds to the production of: Codelco-Chile, Disputada de Las Condes (since August 1994), and Pelambres (since January 2000).

FUENTE/ SOURCE: COMISION CHILENA DEL COBRE.

PRODUCCION CHILENA DE COBRE DE MINA COMERCIALIZABLE POR EMPRESA
CHILEAN COPPER MINE PRODUCTION BY COMPANY

(Miles de T.M. de cobre fino) / (Thousand metric tons of fine copper)

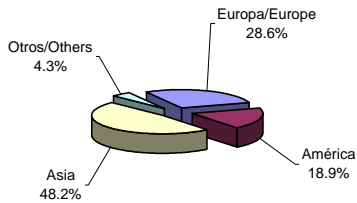
	CODELCO					TOTAL CODELCO	Anglo American				Anglo American		Cerro Colorado	El Tesoro	Quebrada Blanca	Lomas Bayas	Michilla Spence	Otros	TOTAL CHILE			
	División Codelco	División Norte	División Salvador	División Andina	División El Teniente		Gaby	Los Pelambres	Sur	El Abra	Candelaria	Norte								Zaldívar		
2004	982.8	74.9	239.9	435.6	-	1,733.2	1,195.1	481.0	362.6	300.6	218.0	200.0	155.0	147.6	119.5	97.8	76.3	62.0	50.0	-	213.8	5,412.5
2005	964.9	77.5	248.2	437.4	-	1,728.0	1,271.5	427.0	333.8	293.7	210.6	162.7	149.7	123.3	90.4	98.1	81.0	63.2	46.4	-	241.1	5,320.5
2006	940.6	80.6	236.4	418.3	-	1,675.9	1,255.6	440.0	335.2	294.8	218.6	169.6	152.1	146.3	115.5	94.0	82.4	64.3	47.3	4.3	264.9	5,360.8
2007	896.3	63.9	218.4	404.7	-	1,583.3	1,483.9	452.0	300.1	302.1	166.0	181.0	151.6	142.9	98.7	93.0	82.9	61.5	45.1	128.1	284.8	5,557.0
2008	755.3	42.7	219.5	381.2	67.7	1,466.4	1,254.0	464.4	351.2	283.5	165.8	173.5	148.9	133.5	104.2	90.8	85.4	59.2	47.7	164.8	334.3	5,327.6
ENE/ JAN / 2007	74.2	6.1	19.1	23.1	-	122.5	123.8	24.1	27.4	24.4	15.0	12.7	13.2	12.6	10.4	8.3	7.0	5.6	3.8	10.2	24.2	445.2
FEB	48.0	5.8	18.1	28.8	-	100.7	112.4	19.8	22.6	22.7	13.6	12.2	12.3	11.2	8.5	7.5	6.4	5.1	3.9	9.6	20.3	388.8
MAR	69.8	6.2	20.2	41.7	-	137.9	150.4	33.0	23.1	26.3	14.3	14.2	12.9	12.6	9.2	7.8	7.3	5.8	3.9	13.8	25.6	498.1
ABR/ APR	75.9	6.6	19.2	37.7	-	139.4	117.1	35.8	23.2	22.6	13.1	12.8	12.4	12.3	7.1	8.0	7.0	5.5	3.8	12.0	22.8	454.9
MAY	73.4	6.8	18.0	37.6	-	135.8	130.3	38.1	27.1	26.3	13.7	13.2	12.8	11.6	6.8	7.4	7.1	5.4	4.2	13.2	23.1	476.1
JUN	75.3	2.0	17.8	32.5	-	127.6	124.7	39.2	23.2	24.9	13.0	16.4	11.7	11.2	6.4	7.8	6.7	5.2	3.8	12.4	23.7	457.9
JUL	72.0	1.1	15.1	27.0	-	115.2	129.7	41.5	25.6	24.8	11.2	14.3	12.4	12.4	8.2	7.8	6.5	5.1	3.8	9.4	23.9	451.8
AGO/ AUG	68.4	3.2	16.8	25.1	-	113.5	108.2	44.8	19.7	24.8	13.9	16.4	12.4	12.5	7.3	7.3	6.7	4.8	4.1	7.2	23.9	427.5
SEP	84.2	7.3	19.0	38.1	-	148.6	115.8	43.5	23.6	26.4	14.9	16.1	12.8	11.7	7.6	7.5	6.9	4.8	3.6	7.3	23.4	474.5
OCT	75.0	7.3	17.7	38.8	-	138.8	120.9	43.0	26.1	26.4	13.8	19.0	14.0	12.1	9.0	7.7	7.2	5.2	3.6	8.1	27.1	482.0
NOV	86.1	5.1	18.6	33.5	-	143.3	108.3	42.0	26.8	26.2	13.9	18.5	12.6	11.3	9.1	7.9	6.9	4.5	2.4	11.2	24.1	469.0
DIC/ DEC	94.0	6.4	18.8	40.8	-	160.0	142.3	47.2	31.7	26.3	15.6	15.2	12.1	11.4	9.1	8.0	7.2	4.5	4.2	13.7	22.7	531.2
ENE/ JAN / 2008	55.8	4.1	20.1	31.3	-	111.3	116.1	41.5	23.6	23.6	13.3	11.1	12.6	11.4	9.6	8.4	7.2	4.9	4.0	14.7	23.7	437.0
FEB	62.8	5.7	17.5	32.1	-	118.1	101.0	32.5	28.3	24.3	12.9	12.7	11.9	10.2	9.1	7.2	6.5	4.4	3.6	12.5	24.2	419.4
MAR	65.5	4.2	18.2	30.0	-	117.9	116.6	36.1	30.1	24.8	13.2	14.5	12.7	11.5	10.0	8.4	7.1	4.8	3.9	14.4	27.2	453.2
ABR/ APR	66.0	2.7	10.2	19.6	-	98.5	113.6	42.6	26.4	25.7	13.7	11.1	12.5	11.0	8.5	7.7	7.1	4.6	3.8	14.8	28.4	430.0
MAY	70.6	3.0	19.1	24.5	-	117.2	131.5	35.8	29.1	22.9	14.0	12.3	12.8	10.2	10.1	7.7	7.4	5.0	3.9	15.0	31.0	465.9
JUN	60.0	5.2	17.5	29.4	4.3	116.4	145.4	35.3	32.2	24.1	14.5	14.0	11.5	9.8	8.7	7.3	7.1	4.6	3.9	13.2	24.0	472.0
JUL	56.0	5.0	19.2	36.4	8.2	124.8	91.2	37.0	31.1	22.2	13.7	17.9	11.9	8.4	7.3	7.8	7.0	4.9	4.2	12.0	30.2	431.6
AGO/ AUG	56.2	3.5	17.3	33.2	10.5	120.7	88.0	36.1	29.9	21.3	13.8	19.0	12.9	10.2	7.1	7.3	7.3	4.8	4.1	12.1	29.6	424.2
SEP	58.7	2.7	20.2	34.4	5.9	121.9	92.6	33.7	32.1	20.0	14.4	13.7	12.3	10.5	7.5	6.4	7.0	4.8	4.0	11.6	27.4	419.9
OCT	63.9	3.5	19.5	35.5	13.7	136.1	84.5	42.3	32.3	26.2	13.8	16.6	12.8	13.0	8.5	6.5	7.3	5.1	4.2	13.9	32.6	455.7
NOV	61.1	0.5	20.3	33.6	12.6	128.1	83.3	44.7	26.2	23.5	13.6	16.3	12.5	13.2	8.5	7.7	7.1	4.8	4.0	15.0	27.7	436.2
DIC/ DEC	78.7	2.6	20.4	41.2	12.5	155.4	90.2	46.8	29.9	24.9	14.9	14.3	12.5	14.1	9.3	8.4	7.3	6.5	4.1	15.6	28.3	482.5
ENE/ JAN / 2009 (P)	55.8	4.8	17.3	31.1	13.6	122.6	84.7	44.3	29.2	20.1	13.4	12.9	12.7	12.0	9.2	7.6	7.3	5.8	4.2	16.4	27.7	430.1
FEB	52.4	4.8	17.9	30.1	11.3	116.5	72.6	33.4	24.3	18.6	12.2	11.0	11.5	11.1	8.2	5.6	6.8	5.9	3.7	15.2	19.8	376.4
MAR	67.4	4.9	19.9	26.3	13.7	132.2	77.0	41.6	29.5	22.1	13.0	12.5	12.6	11.2	9.1	7.2	7.4	6.0	3.5	16.0	24.6	425.5
ABR/ APR	65.0	5.4	16.9	33.3	11.2	131.8	78.2	41.5	26.7	23.8	13.5	11.5	12.9	12.0	9.3	6.5	7.2	6.0	3.3	15.3	25.6	425.1
MAY	71.6	4.7	18.7	32.6	8.2	135.8	98.7	45.3	27.4	23.1	14.0	11.3	12.9	11.3	9.4	6.6	7.4	6.2	3.1	15.2	28.1	455.8
JUN	78.3	5.5	15.8	33.0	11.7	144.3	109.8	41.8	26.0	22.7	13.7	12.9	12.5	10.6	8.8	6.5	7.3	6.2	2.9	14.4	25.4	465.8
JUL	68.5	4.8	19.6	33.3	13.1	139.3	69.5	40.2	29.0	23.6	13.4	11.5	12.6	11.8	6.0	8.5	7.2	6.1	3.1	16.5	22.9	421.2
AGO/ AUG	72.3	5.9	17.0	34.7	12.3	143.1	100.2	41.7	26.5	24.9	14.3	9.7	12.5	11.6	6.0	8.8	6.8	6.2	3.5	17.3	26.7	459.8
SEP	81.3	5.5	16.3	31.9	13.6	148.6	97.5	46.5	21.2	24.5	13.8	9.1	12.8	11.1	6.6	8.6	7.4	6.3	3.3	17.2	28.7	463.2
OCT	91.7	4.8	16.1	40.8	14.3	167.7	103.9	53.4	25.2	26.1	14.2	11.0	13.7	12.2	6.5	7.4	7.7	6.4	3.2	9.3	26.8	494.7
NOV	80.8	6.9	17.6	36.6	14.1	156.0	101.3	47.6	27.1	23.8	13.9	9.0	12.6	12.8	7.0	7.6	7.3	6.2	3.3	2.4	28.2	466.1
DIC/ DEC	89.6	7.5	16.6	40.4	10.0	164.1	110.3	58.6	30.5	23.6	14.7	11.8	12.3	9.3	7.6	9.3	7.6	5.8	3.5	7.1	29.5	505.6
ENE-DIC/ JAN-DEC / 2009 (P)	874.7	65.5	209.7	404.1	148.0	1,702.0	1,103.7	535.9	322.6	276.9	164.1	134.2	151.6	137.0	93.7	90.2	87.4	73.1	40.6	162.3	314.0	5,389.3
ENE-DIC/ JAN-DEC / 2008	755.3	42.7	219.5	381.2	67.7	1,466.4	1,254.0	464.4	351.2	283.5	165.8	173.5	148.9	133.5	104.2	90.8	85.4	59.2	47.7	164.8	334.3	5,327.6
VARIACION % / % VARIATION ENE-DIC/ JAN-DEC/ 2009-2008	15.8	53.4	-4.5	6.0	-	16.1	-12.0	15.4	-8.1	-2.3	-1.0	-22.7	1.8	2.6	-10.1	-0.7	2.3	23.5	-14.9	-1.5	-6.1	1.2

(P) Cifras provisionarias./ Provisional figures

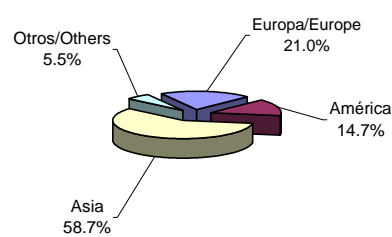
FUENTE/ SOURCE: COMISION CHILENA DEL COBRE.

Evolución Exportaciones por Destinos y Productos Exports Evolution by Destination and Type of Product

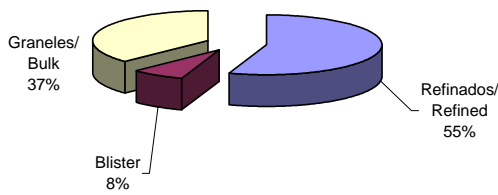
Participación Relativa Embarques de Cobre y Subproductos año 2008
Copper and by-products shipments relative share year 2008



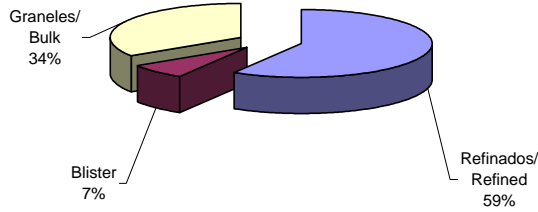
Participación Relativa Embarques de Cobre y Subproductos Año 2009
Copper and by-products shipments relative share Year 2009



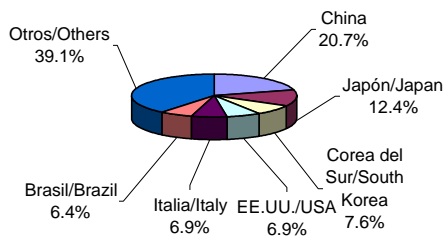
Participación de Productos en las Exportaciones de Cobre año 2008
Share of Products in Copper Exports year 2008



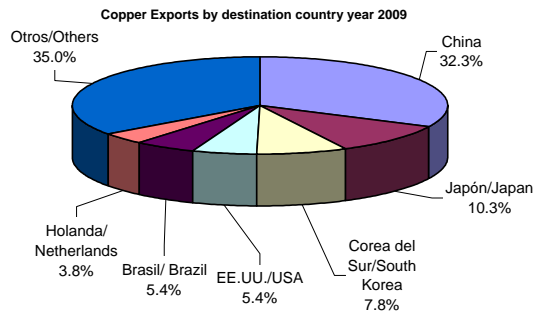
Participación de Productos en las Exportaciones de Cobre Año 2009
Share of Products in Copper Exports Year 2009



Países de destino de las Exportaciones de Cobre año 2008
Copper Exports by destination country year 2008



Países de destino de las Exportaciones de Cobre Año 2009
Copper Exports by destination country year 2009



**VALORES DE LOS EMBARQUES DE EXPORTACION
DE COBRE Y SUBPRODUCTOS**
(FOB líquido de retorno en millones de dólares)
COPPER AND BY-PRODUCTS EXPORT SHIPMENTS VALUE (USD millions FOB)

	COBRE(1)	CONCENTRADOS MOLIBDENITA	OTROS SUBPRODUCTOS (2)	TOTAL
	COPPER(1)	MOLYBDENITE CONCENTRATES	OTHER BY-PRODUCTS (2)	
2004	14,530.0	457.1	1,102.8	16,089.9
2005	17,762.6	1,101.1	2,184.4	21,048.1
2006	33,350.6	875.0	1,927.2	36,152.8
2007	37,913.2	1,390.0	2,267.8	41,571.0
2008	36,550.2	490.7	2,686.2	39,727.1
ENE/ JAN / 2006	1,899.3	71.8	179.1	2,150.2
FEB	1,933.7	31.6	110.0	2,075.3
MAR	3,342.3	128.9	204.3	3,675.5
ABR/ APR	2,277.3	70.7	132.4	2,480.4
MAY	3,241.0	45.3	183.4	3,469.7
JUN	2,906.2	70.7	129.0	3,105.9
JUL	3,353.7	72.4	159.5	3,585.6
AGO/ AUG	2,912.6	109.0	183.5	3,205.1
SEP	3,196.1	48.4	167.8	3,412.3
OCT	2,959.6	105.6	150.0	3,215.2
NOV	2,876.8	35.6	180.9	3,093.3
DIC/ DEC	2,452.0	85.0	147.3	2,684.3
ENE/ JAN / 2007	3,352.9	117.5	151.2	3,621.6
FEB	2,454.1	134.2	124.7	2,713.0
MAR	2,855.5	298.8	150.3	3,304.5
ABR/ APR	3,188.3	102.8	169.5	3,460.6
MAY	4,122.9	117.1	178.3	4,418.3
JUN	2,940.2	114.9	210.9	3,266.0
JUL	3,522.4	100.9	208.5	3,831.8
AGO/ AUG	2,677.8	107.8	197.9	2,983.5
SEP	3,095.7	62.3	192.5	3,350.5
OCT	3,955.5	56.4	205.8	4,217.7
NOV	3,173.7	102.1	251.3	3,527.1
DIC/ DEC	2,574.3	75.1	227.1	2,876.5
ENE/ JAN / 2008	3,465.2	60.8	222.0	3,748.0
FEB	2,952.5	50.6	212.2	3,215.2
MAR	4,092.1	69.5	263.1	4,424.8
ABR/ APR	3,625.1	46.4	234.9	3,906.5
MAY	2,846.8	38.8	184.0	3,069.6
JUN	3,444.5	41.4	295.2	3,781.1
JUL	3,953.0	65.0	255.8	4,273.8
AGO/ AUG	3,338.3	30.4	262.8	3,631.6
SEP	2,383.6	26.0	232.4	2,642.0
OCT	3,006.2	25.4	222.9	3,254.5
NOV	2,126.5	24.4	142.3	2,293.2
DIC/ DEC	1,316.2	11.9	158.6	1,486.7
ENE/ JAN / 2009	1,555.0	4.6	138.1	1,697.7
FEB	1,344.5	5.8	115.4	1,465.7
MAR	1,552.9	6.2	132.2	1,691.2
ABR/ APR	1,919.4	6.5	76.7	2,002.6
MAY	1,990.0	8.2	88.8	2,087.1
JUN	2,092.4	13.6	114.3	2,220.3
JUL	2,588.1	22.7	119.5	2,730.2
AGO/ AUG	2,140.2	12.3	89.0	2,241.5
SEP	2,617.9	18.1	175.0	2,811.0
OCT	2,473.6	23.1	146.2	2,642.9
NOV	2,848.1	8.7	124.2	2,981.1
DIC/ DEC	3,149.0	11.7	143.2	3,304.0
ENE-DIC/ JAN-DEC / 2009	26,271.1	141.5	1,462.7	27,875.3
ENE-DIC/ JAN-DEC / 2008	36,550.2	490.7	2,686.2	39,727.1
VARIACION % / % VARIATION				
ENE-DIC/ JAN-DEC 2009/2008	-28.1	-71.2	-45.5	-29.8

Nota: Las cifras corresponden a la fecha de emisión del Documento Unico de Salida (DUS).

Los valores del DUS son provisionarios (para las exportaciones bajo condición), mientras no se reemplacen por los valores definitivos de los Informes de Variación de Valor(IVV).

Note: Figures correspond to the date indicated in the the Export Clearance (DUS).

Values of Export Clearance (DUS) are provisional (for exports under condition), until they are replaced by the definitive values in the Value Variation Reports (VVR).

(1) No incluye el valor del cobre contenido en los embarques de concentrados de minerales de oro (Cía. Minera El Indio), por estar incorporado en la glosa de exportaciones de oro que informa el Banco Central de Chile./ Does not include value of copper content in gold concentrates shipments (Cia. Minera El Indio), as they are included in the gold exports gloss informed by the Central Bank of Chile.

(2) Incluye: Barros Anódicos, Metal Doré, Plata, Selenio, Oxido de Molibdeno y otros./ Includes: Anod slimes, dore, silver, selenium, molybdenum oxide and others.

(a) Valor inferior a 50 mil dólares. / Value below 50 thousand dollars.

FUENTE / SOURCE: COMISION CHILENA DEL COBRE.

**EMBARQUES FISICOS DE EXPORTACION DE COBRE Y
CONCENTRADOS DE MOLIBDENITA
COPPER AND MOLIBDENYTE CONCENTRATES EXPORT QUANTITY SHIPMENTS**

	COBRE (Miles de T.M. de Cobre Fino)/COPPER (thousand MT of fine copper)				C.MOLIBDENITA
	REFINADOS(1)	BLISTER	GRANELES(2)	TOTAL	(T.M. de Fino)
	REFINED	BLISTER	BULK	TOTAL	MOLYBDENYTE C. (MT of fine)
2004	2,953.9	366.1	2,165.6	5,485.6	15,276.2
2005	2,799.3	347.3	2,190.4	5,337.0	18,129.9
2006	2,605.8	457.1	2,171.1	5,234.0	19,793.1
2007	2,909.7	505.5	2,258.1	5,673.4	22,961.7
2008	2,983.1	407.7	2,014.4	5,405.3	7,969.3
ENE/ JAN / 2006	189.2	29.4	170.9	389.5	1,301.8
FEB	233.7	35.1	120.2	389.0	873.2
MAR	300.5	34.4	259.8	594.7	4,242.6
ABR/ APR	178.6	31.4	161.4	371.4	1,455.6
MAY	260.0	40.5	185.1	485.6	962.6
JUN	220.5	31.4	162.2	414.1	1,422.3
JUL	217.1	44.0	231.2	492.3	1,376.7
AGO/ AUG	204.8	61.3	144.0	410.1	2,582.6
SEP	234.2	39.1	177.8	451.1	1,171.4
OCT	197.5	40.5	194.0	432.0	1,970.1
NOV	188.2	37.9	200.5	426.6	698.7
DIC/ DEC	181.5	32.1	164.0	377.6	1,735.5
ENE/ JAN / 2007	317.3	69.9	173.5	560.7	2,322.0
FEB	210.6	40.2	164.4	415.2	2,195.4
MAR	229.0	37.2	199.7	465.9	4,582.7
ABR/ APR	265.7	39.6	170.8	476.1	1,722.0
MAY	362.5	40.5	194.4	597.4	1,972.4
JUN	196.1	35.2	187.6	418.9	1,907.7
JUL	255.8	23.0	216.3	495.1	1,484.1
AGO/ AUG	204.4	38.6	140.1	383.1	1,779.4
SEP	200.2	25.5	232.7	458.5	1,026.4
OCT	267.0	65.8	234.2	567.1	924.4
NOV	226.2	38.0	180.8	445.0	1,822.6
DIC/ DEC	175.0	51.8	163.4	390.2	1,222.7
ENE/ JAN / 2008	246.0	62.0	205.4	513.4	881.8
FEB	261.0	32.4	113.5	406.9	784.6
MAR	255.6	37.9	255.8	549.3	1,121.4
ABR/ APR	236.4	29.4	198.7	464.4	706.6
MAY	213.9	35.0	106.6	355.5	569.9
JUN	232.0	35.5	182.7	450.2	655.7
JUL	268.7	12.7	243.4	524.8	943.3
AGO/ AUG	259.9	42.0	146.3	448.1	454.2
SEP	198.9	14.7	133.8	347.4	442.3
OCT	300.0	35.2	160.9	496.1	394.1
NOV	254.1	43.0	178.6	475.7	434.0
DIC/ DEC	256.8	28.0	88.7	373.4	581.4
ENE/ JAN / 2009	269.0	44.2	174.3	487.6	260.9
FEB	269.2	25.3	119.2	413.8	363.9
MAR	268.0	33.3	122.1	423.5	402.0
ABR/ APR	269.7	30.7	177.9	478.4	388.5
MAY	279.3	22.9	141.2	443.5	473.2
JUN	242.4	38.9	156.9	438.2	850.4
JUL	329.8	32.4	129.7	491.8	815.6
AGO/ AUG	235.1	33.2	124.5	392.7	488.3
SEP	240.5	47.4	166.2	454.1	638.9
OCT	258.0	22.0	139.1	419.2	909.5
NOV	228.3	38.2	218.6	485.2	369.4
DIC/ DEC	289.9	27.3	175.4	492.6	544.5
ENE-DIC/ JAN-DEC / 2009	3,179.3	396.0	1,845.2	5,420.5	6,505.0
ENE-DIC/ JAN-DEC / 2008	2,983.1	407.7	2,014.4	5,405.3	7,969.3
VARIACION % / % VARIATION					
ENE-DIC/ JAN-DEC 2009/2008	6.6	-2.9	-8.4	0.3	-18.4

Nota: Las cifras corresponden a la fecha de emisión del Documento Unico de Salida (DUS).

Los valores del DUS son provisionarios (para las exportaciones bajo condición), mientras no se reemplacen por los valores definitivos de los Informes de Variación de Valor(IVV).

Note: Figures correspond to the date indicated in the the Export Clearance (DUS).

Values of Export Clearance (DUS) are provisional (for exports under condition), until they are replaced by the definitive values in the Value Variation Reports (VVR).

(1) Incluye cátodos, formas especiales y refinado a fuego./ Includes cathodes, special forms and fire refined.

(2) Incluye cementos, concentrados y cobre secundario./ Includes cements, concentrates and secondary copper.

FUENTE / SOURCE: COMISION CHILENA DEL COBRE.

**EMBARQUES FISICOS DE EXPORTACION DE COBRE
POR EXPORTADOR**
(Miles de T.M. de Cobre Fino)
COPPER EXPORT SHIPMENTS QUANTITY BY EXPORTER (Thousand MT of fine copper)

	2007	2008	ENERO-DICIEMBRE JANUARY-DECEMBER		VARIACION % ENE-DIC 2009/2008
			2008	2009	% VARIATION JAN-DEC 2009/2008
CODELCO-CHILE	1,835.3	1,717.6	1,717.6	1,842.1	7.2
OTRAS EMPRESAS MINERAS OTHER MINING COMPANIES	3,832.0	3,679.9	3,679.9	3,574.0	-2.9
ENAMI	137.7	130.4	130.4	183.9	41.0
ANGLO AMERICAN NORTE	113.3	131.3	131.3	152.1	15.8
ANGLO AMERICAN SUR	260.4	191.8	191.8	209.1	9.0
XSTRATA COPPER CHILE S.A.	173.3	180.0	180.0	184.0	2.2
ESCONDIDA	1,353.0	1,152.4	1,152.4	997.5	-13.4
QUEBRADA BLANCA	80.7	84.3	84.3	88.0	4.4
PUNTA DEL COBRE	8.0	8.9	8.9	5.1	-42.7
CERRO COLORADO	95.2	106.0	106.0	92.6	-12.6
MINERA MICHILLA S.A.	44.8	47.4	47.4	39.2	-17.3
CANDELARIA	179.3	169.6	169.6	125.9	-25.8
RAYROCK LTDA.	9.2	6.3	6.3	4.5	-28.6
EL ABRA	170.2	162.4	162.4	157.4	-3.1
ANDACOLLO	19.2	21.3	21.3	17.7	-16.9
CIA.EXPLORADORA DE MINAS	10.7	11.4	11.4	10.7	-6.1
ZALDIVAR	148.9	114.7	114.7	143.2	24.8
COLLAHUASI	360.0	354.2	354.2	384.9	8.7
CERRO DOMINADOR	16.5	17.7	17.7	8.0	-54.8
LOMAS BAYAS	66.4	59.3	59.3	71.5	20.6
EL TESORO	93.8	94.0	94.0	84.7	-9.9
LOS PELAMBRES	305.5	378.2	378.2	351.4	-7.1
ATACAMA KOZAN	13.6	8.1	8.1	1.9	-76.5
HALDEMAN	14.9	16.3	16.3	13.3	-18.4
OJOS DEL SALADO	10.0	9.0	9.0	15.0	66.7
GRACE S.A.	15.9	18.3	18.3	14.2	-22.4
SPENCE	114.3	173.0	173.0	162.5	-6.1
OTROS	17.2	33.6	33.6	55.7	65.8
TRANSFORMADORES TRANSFORMERS	1.1	1.4	1.4	0.0	-100.0
MADECO	1.1	1.4	1.4	0.0	-100.0
EXPORTADORES DE CHATARRA SCRAP EXPORTERS	5.0	6.4	6.4	4.4	-31.3
DIONISIO S.A.	1.0	0.0	0.0	0.2	-
INESA	-	0.0	0.0	-	-
MADECO	-	0.0	0.0	-	-
M.CERRILLOS	-	-	-	-	-
OTROS	4.0	6.4	6.4	4.2	-34.4
TOTAL	5,673.4	5,405.3	5,405.3	5,420.5	0.3

Nota: Las cifras corresponden a la fecha de emisión del Documento Unico de Salida (DUS).

Los valores del DUS son provisionarios (para las exportaciones bajo condición), mientras no se reemplacen por los valores definitivos de Informes de Variación de Valor (IVV).

Note: Figures correspond to the date indicated in the the Export Clearance (DUS).

Values of Export Clearance (DUS) are provisional (for exports under condition), until they are replaced by the definitive values in the Value Variation Reports (\

FUENTE: COMISION CHILENA DEL COBRE.

**VALORES DE LOS EMBARQUES DE EXPORTACION DE COBRE Y SUBPRODUCTOS
SEGUN PAIS DE DESTINO AÑO 2008**
(FOB líquido de retorno en millones de dólares)

COPPER AND BY-PRODUCTS EXPORT SHIPMENTS VALUE BY DESTINATION COUNTRY YEAR 2008 (USD millions FOB)

PAIS DE DESTINO DESTINATION COUNTRY	COBRE(1) COPPER	PARTICIPACION(%) SHARE (%)	SUBPRODUCTOS(2) BY-PRODUCTS	PARTICIPACION(%) SHARE (%)	TOTAL TOTAL	PARTICIPACION(%) SHARE (%)
EUROPA/ EUROPE	9,975.0	27.3	1,379.9	43.4	11,354.8	28.6
Alemania/ Germany	1,126.1	3.1	16.0	0.5	1,142.1	2.9
Austria	0.0	-	1.0	0.0	1.0	0.0
Bélgica/ Belgium	236.5	0.6	52.6	1.7	289.1	0.7
Bulgaria	419.0	1.1	-	-	419.0	1.1
España/ Spain	956.9	2.6	66.5	2.1	1,023.3	2.6
Finlandia/ Finland	114.2	0.3	4.4	0.1	118.6	0.3
Francia/ France	1,679.9	4.6	9.7	0.3	1,689.6	4.3
Holanda/ Netherlands	2,129.5	5.8	956.4	30.1	3,085.9	7.8
Italia/ Italy	2,564.4	7.0	65.8	2.1	2,630.2	6.6
Polonia/ Poland	186.9	0.5	-	-	186.9	0.5
Reino Unido/ United Kingdom	74.7	0.2	77.2	2.4	151.9	0.4
Suecia/ Sweden	254.6	0.7	111.0	3.5	365.6	0.9
Suiza/ Switzerland	232.3	0.6	16.6	0.5	248.9	0.6
Otros/ Other	0.0	0.0	2.7	0.1	2.7	0.0
AMERICA / AMERICAS	6,756.7	18.5	733.9	23.1	7,490.5	18.9
Argentina	114.9	0.3	18.4	0.6	133.3	0.3
Bolivia	-	-	2.6	0.1	2.6	0.0
Brasil/ Brazil	2,437.3	6.7	239.8	7.5	2,677.1	6.7
Canadá / Canada	716.8	2.0	13.5	0.4	730.3	1.8
Colombia	18.3	0.1	-	-	18.3	0.0
Estados Unidos/ USA	2,566.2	7.0	365.6	11.5	2,931.8	7.4
México / Mexico	710.6	1.9	93.2	2.9	803.8	2.0
Panamá	123.7	0.3	-	0.0	123.7	0.3
Perú / Peru	29.3	0.1	0.7	0.0	30.0	0.1
Venezuela	39.4	0.1	-	-	39.4	0.1
Otros/ Other	0.2	0.0	0.0	0.0	0.2	0.0
ASIA	18,142.2	49.6	1,024.8	32.3	19,167.1	48.2
Corea del Sur / South Korea	2,800.5	7.7	180.1	5.7	2,980.6	7.5
China	7,222.8	19.8	16.0	0.5	7,238.8	18.2
Filipinas/ Philippines	297.1	0.8	-	-	297.1	0.7
Hong Kong	9.4	0.0	-	-	9.4	0.0
India	1,623.9	4.4	17.2	0.5	1,641.1	4.1
Indonesia	1.1	-	-	-	1.1	0.0
Irán / Iran	28.7	0.1	-	-	28.7	0.1
Japón/ Japan	4,281.9	11.7	799.6	25.2	5,081.5	12.8
Malasia/ Malaysia	40.7	0.1	-	-	40.7	0.1
Singapur/ Singapore	89.8	0.2	0.9	0.0	90.6	0.2
Tailandia/ Thailand	36.0	0.1	6.6	0.2	42.6	0.1
Taiwan/ Taipei, China	1,440.0	3.9	-	-	1,440.0	3.6
Turquía/ Turkey	222.2	0.6	2.7	0.1	224.9	0.6
Vietnam	47.9	0.1	-	-	47.9	0.1
Otros/ Other	0.0	0.0	1.8	0.1	1.8	0.0
OTROS/ OTHER	1,676.3	4.6	38.4	1.2	1,714.6	4.3
Australia	303.8	0.8	0.9	0.0	304.7	0.8
Sudáfrica / Southafrica	-	-	37.5	1.2	37.5	0.1
Otros/ Other	1,372.4	3.8	-	-	1,372.4	3.5
TOTAL	36,550.2	100.0	3,176.9	100.0	39,727.1	100.0

(1) Embarques de exportación a consumidores finales y a plantas de tratamiento. /Export shipments to final consumers and treatment plants.

(2) Incluye: Barros Anódicos, Metal Doré, Plata, Selenio, Oxido de Molibdeno, Concentrados de Molibdeno y otros./

Includes: Anod slimes, dore, silver, selenium, molybdenum oxide, molybdenum concentrates and others.

FUENTE/ SOURCE: COMISION CHILENA DEL COBRE.

DESTINO DE LOS EMBARQUES FISICOS DE EXPORTACION DE COBRE (1)
AÑO 2008

(Miles de T.M. de Cobre Fino)

COPPER EXPORT SHIPMENTS QUANTITY BY DESTINATION COUNTRY YEAR 2008 (Thousand MT of fine copper)

PAIS DE DESTINO DESTINATION COUNTRY	REFINADOS(2) REFINED	BLISTER BLISTER	GRANELES(3) BULK	TOTAL TOTAL	PARTICIPACION PORCENTUAL SHARE (%)
EUROPA/ EUROPE	1,063.3	66.6	330.2	1,460.1	27.0
Alemania/ Germany	56.6	5.0	107.0	168.6	3.1
Belgica/ Belgium	0.3	31.7	0.0	32.0	0.6
Bulgaria	-	-	66.5	66.5	1.2
España/ Spain	85.2	-	60.6	145.9	2.7
Finlandia/ Finland	-	-	20.6	20.6	0.4
Francia/ France	239.0	-	-	239.0	4.4
Holanda/ Netherlands	272.8	29.9	-	302.6	5.6
Italia/ Italy	372.1	-	-	372.1	6.9
Polonia/ Poland	-	-	29.0	29.0	0.5
Reino Unido/ United Kingdom	8.6	0.0	0.2	8.8	0.2
Suecia/ Sweden	-	-	46.2	46.2	0.9
Suiza/ Switzerland	28.5	-	-	28.5	0.5
Otros/ Other	0.0	0.0	0.0	0.0	0.0
AMERICA / AMERICAS	592.3	202.8	159.6	954.8	17.7
Argentina	14.8	-	-	14.8	0.3
Brasil/ Brazil	202.6	0.3	143.3	346.3	6.4
Canada	-	84.6	11.5	96.1	1.8
Colombia	2.2	-	0.1	2.3	0.0
Estados Unidos/ United States	329.4	43.0	0.0	372.4	6.9
Mexico	23.6	74.8	-	98.3	1.8
Panamá	15.0	-	0.3	15.3	0.3
Peru	-	0.0	4.2	4.2	0.1
Venezuela	4.7	-	-	4.7	0.1
Otros/ Other	0.0	0.0	0.3	0.3	0.0
ASIA	1,138.4	99.7	1,524.5	2,762.6	51.1
Corea del Sur / South Korea	223.9	23.4	163.0	410.3	7.6
China	606.3	58.2	456.1	1,120.6	20.7
Filipinas/ Philippines	1.0	-	43.6	44.6	0.8
Hong Kong	2.7	-	-	2.7	0.1
India	-	2.0	250.6	252.6	4.7
Indonesia	0.2	-	0.0	0.2	0.0
Irán	-	-	3.6	3.6	0.1
Japon/ Japan	53.1	10.6	607.5	671.2	12.4
Malasia/ Malaysia	7.5	-	-	7.5	0.1
Singapur/ Singapore	12.6	-	-	12.6	0.2
Tailandia/ Thailand	5.6	-	0.0	5.6	0.1
Taiwan/ Taipei, China	188.6	5.6	-	194.2	3.6
Turquía/ Turkey	30.0	-	-	30.0	0.6
Vietnam	6.8	-	-	6.8	0.1
Otros/ Other	0.0	0.0	0.0	0.0	0.0
OTROS/ OTHER	189.2	38.6	0.0	227.8	4.2
Australia	7.4	38.6	-	46.0	0.9
Otros/ Other	181.8	0.0	0.0	181.8	3.4
TOTAL	2,983.1	407.7	2,014.4	5,405.3	100.0

(1) Embarques de exportación a consumidores finales y a plantas de tratamiento. / Export shipments to final consumers and treatment plants.

(2) Incluye cátodos, formas especiales y refinado a fuego. / Includes cathodes, special forms and fire refined.

(3) Incluye cementos, concentrados y cobre secundario. / Includes cements, concentrates and secondary copper.

FUENTE/ SOURCE: COMISION CHILENA DEL COBRE.

**VALORES DE LOS EMBARQUES DE EXPORTACION DE COBRE Y SUBPRODUCTOS
SEGUN PAIS DE DESTINO AÑO 2009**
(FOB líquido de retorno en millones de dólares)

COPPER AND BY-PRODUCTS EXPORT SHIPMENTS VALUE BY DESTINATION COUNTRY YEAR 2009 (USD millions FOB)

PAIS DE DESTINO DESTINATION COUNTRY	COBRE(1) COPPER	PARTICIPACION(%) SHARE (%)	SUBPRODUCTOS(2) BY-PRODUCTS	PARTICIPACION(%) SHARE (%)	TOTAL TOTAL	PARTICIPACION(%) SHARE (%)
EUROPA/ EUROPE	5,354.0	20.4	510.8	31.8	5,864.8	21.0
Alemania/ Germany	617.5	2.4	11.7	0.7	629.2	2.3
Austria	0.0	0.0	1.4	0.1	1.4	0.0
Bélgica/ Belgium	424.5	1.6	101.7	6.3	526.2	1.9
Bulgaria	358.9	1.4	11.8	0.7	370.7	1.3
España/ Spain	558.6	2.1	6.9	0.4	565.5	2.0
Finlandia/ Finland	59.5	0.2	9.0	0.6	68.4	0.2
Francia/ France	961.5	3.7	9.4	0.6	970.9	3.5
Grecia/ Greece	145.2	0.6	-	-	145.2	0.5
Holanda/ Netherlands	1,079.5	4.1	276.3	17.2	1,355.8	4.9
Italia/ Italy	802.3	3.1	17.0	1.1	819.3	2.9
Noruega/ Norway	0.0	0.0	-	-	0.0	0.0
Polonia/ Poland	68.1	0.3	-	-	68.1	0.2
Reino Unido/ United Kingdom	109.4	0.4	30.1	1.9	139.4	0.5
Suecia/ Sweden	102.9	0.4	23.2	1.4	126.1	0.5
Suiza/ Switzerland	66.1	0.3	3.2	0.2	69.2	0.2
Otros/ Other	0.0	0.0	9.1	0.6	9.1	0.0
AMERICA / AMERICAS	3,687.8	14.0	418.6	26.1	4,106.4	14.7
Argentina	52.6	0.2	3.5	0.2	56.1	0.2
Brasil/ Brazil	1,362.4	5.2	47.8	3.0	1,410.2	5.1
Canadá / Canada	322.2	1.2	16.8	1.0	339.0	1.2
Colombia	7.9	0.0	-	-	7.9	0.0
Estados Unidos/ USA	1,466.6	5.6	303.2	18.9	1,769.8	6.3
México / Mexico	349.8	1.3	45.8	2.9	395.5	1.4
Panamá	76.0	0.3	0.0	0.0	76.0	0.3
Perú / Peru	19.9	0.1	-	-	19.9	0.1
Venezuela	30.5	0.1	-	-	30.5	0.1
Otros/ Other	0.0	0.0	1.6	0.1	1.6	0.0
ASIA	15,693.4	59.7	674.5	42.0	16,368.0	58.7
Arabia Saudita / Saudi Arabia	24.0	0.1	-	-	24.0	0.1
Corea del Sur / South Korea	2,078.1	7.9	82.1	5.1	2,160.3	7.7
China	8,640.8	32.9	366.7	22.9	9,007.5	32.3
Filipinas/ Philippines	105.1	0.4	-	-	105.1	0.4
Hong Kong	67.0	0.3	-	-	67.0	0.2
India	823.4	3.1	1.2	0.1	824.6	3.0
Indonesia	3.1	0.0	-	-	3.1	0.0
Japón/ Japan	2,605.5	9.9	217.9	13.6	2,823.4	10.1
Malasia/ Malaysia	81.5	0.3	-	-	81.5	0.3
Singapur/ Singapore	15.6	0.1	6.6	0.4	22.2	0.1
Tailandia/ Thailand	51.5	0.2	-	-	51.5	0.2
Taiwan/ Taipei, China	991.1	3.8	-	-	991.1	3.6
Turquía/ Turkey	172.9	0.7	-	-	172.9	0.6
Vietnam	33.7	0.1	-	-	33.7	0.1
Otros/ Other	0.0	0.0	0.0	0.0	0.0	0.0
OTROS/ OTHER	1,535.9	5.8	0.3	0.0	1,536.1	5.5
Australia	330.2	1.3	-	-	330.2	1.2
Otros/ Other	1,205.7	4.6	0.3	0.0	1,205.9	4.3
TOTAL	26,271.1	100.0	1,604.2	100.0	27,875.3	100.0

(1) Embarques de exportación a consumidores finales y a plantas de tratamiento. /Export shipments to final consumers and treatment plants.

(2) Incluye: Barros Anódicos, Metal Doré, Plata, Selenio, Oxido de Molibdeno, Concentrados de Molibdeno y otros./

Includes: Anod slimes, dore, silver, selenium, molybdenum oxide, molybdenum concentrates and others.

FUENTE/ SOURCE: COMISION CHILENA DEL COBRE.

DESTINO DE LOS EMBARQUES FISICOS DE EXPORTACION DE COBRE (1)**AÑO 2009**

(Miles de T.M. de Cobre Fino)

COPPER EXPORT SHIPMENTS QUANTITY BY DESTINATION COUNTRY YEAR 2009 (Thousand MT of fine copper)

PAIS DE DESTINO DESTINATION COUNTRY	REFINADOS(2) REFINED	BLISTER BLISTER	GRANELES(3) BULK	TOTAL TOTAL	PARTICIPACION PORCENTUAL SHARE (%)
EUROPA/ EUROPE	696.5	105.5	308.5	1,110.5	20.5
Alemania/ Germany	22.1	3.0	118.4	143.5	2.6
Belgica/ Belgium	-	88.6	0.0	88.6	1.6
Bulgaria	-	-	79.6	79.6	1.5
España/ Spain	63.3	-	52.8	116.1	2.1
Finlandia/ Finland	-	-	15.0	15.0	0.3
Francia/ France	191.7	-	-	191.7	3.5
Grecia/ Greece	24.4	-	-	24.4	0.5
Holanda/ Netherlands	193.7	13.9	-	207.6	3.8
Italia/ Italy	160.3	-	-	160.3	3.0
Noruega/ Norway	-	-	-	0.0	0.0
Polonia/ Poland	-	-	15.9	15.9	0.3
Reino Unido/ United Kingdom	26.5	-	-	26.5	0.5
Suecia/ Sweden	-	-	26.5	26.5	0.5
Suiza/ Switzerland	14.5	-	0.2	14.7	0.3
Otros/ Other	0.0	0.0	0.0	0.0	0.0
AMERICA / AMERICAS	513.9	115.2	136.6	765.7	14.1
Argentina	11.0	-	-	11.0	0.2
Brasil/ Brazil	162.7	0.0	131.5	294.2	5.4
Canada	-	69.9	-	69.9	1.3
Colombia	1.2	-	0.2	1.4	0.0
Estados Unidos/ United States	295.2	0.2	-	295.3	5.4
Mexico	23.3	45.1	-	68.4	1.3
Panamá	14.6	-	0.1	14.7	0.3
Peru	-	-	4.4	4.4	0.1
Venezuela	5.9	-	-	5.9	0.1
Otros/ Other	0.0	0.0	0.4	0.4	0.0
ASIA	1,728.2	96.9	1,400.1	3,225.2	59.5
Arabia Saudita / Saudi Arabia	3.5	-	-	3.5	0.1
Corea del Sur / South Korea	274.8	16.9	128.4	420.1	7.8
China	1,159.0	78.3	512.2	1,749.6	32.3
Filipinas/ Philippines	-	-	26.2	26.2	0.5
Hong Kong	16.4	-	-	16.4	0.3
India	-	-	201.0	201.0	3.7
Indonesia	0.5	-	-	0.5	0.0
Japon/ Japan	24.7	1.6	532.2	558.5	10.3
Malasia/ Malaysia	15.0	-	-	15.0	0.3
Singapur/ Singapore	3.6	-	-	3.6	0.1
Tailandia/ Thailand	9.0	0.1	0.1	9.1	0.2
Taiwan/ Taipei, China	185.1	0.0	-	185.1	3.4
Turquía/ Turkey	31.3	-	-	31.3	0.6
Vietnam	5.3	-	-	5.3	0.1
Otros/ Other	0.0	0.0	0.0	0.0	0.0
OTROS/ OTHER	240.8	78.3	0.0	319.1	5.9
Australia	-	66.2	-	66.2	1.2
Otros/ Other	240.8	12.1	0.0	252.8	4.7
TOTAL	3,179.3	396.0	1,845.2	5,420.5	100.0

(1) Embarques de exportación a consumidores finales y a plantas de tratamiento. / Export shipments to final consumers and treatment plants.

(2) Incluye cátodos, formas especiales y refinado a fuego. / Includes cathodes, special forms and fire refined.

(3) Incluye cementos, concentrados y cobre secundario. / Includes cements, concentrates and secondary copper.

FUENTE/ SOURCE: COMISION CHILENA DEL COBRE.

VENTAS DE COBRE REFINADO A LA INDUSTRIA MANUFACTURERA NACIONAL
(Miles de T.M. de cobre fino)
REFINED COPPER SALES TO DOMESTIC MANUFACTURING INDUSTRY (Thousands MT of fine copper)

PERIODO PERIOD	ELECTROLITICO ELECTROLITHIC	TRES ESTRELLAS	TOTAL	
			PERIODO PERIOD	ACUMULADO ACUMMULATED
2004	82.1	18.3	100.4	-
2005	85.7	17.0	102.7	-
2006	94.0	16.7	110.7	-
2007	95.1	10.2	105.3	-
2008	94.8	8.4	103.2	-
ENE/ JAN / 2006	7.9	1.2	9.1	9.1
FEB	8.1	1.4	9.5	18.6
MAR	10.3	1.6	11.9	30.5
ABR/ APR	8.4	2.0	10.4	40.9
MAY	8.7	1.5	10.2	51.1
JUN	8.1	1.9	10.0	61.1
JUL	8.5	1.6	10.1	71.2
AGO/ AUG	7.7	1.3	9.0	80.2
SEP	6.5	1.3	7.8	88.0
OCT	6.9	1.4	8.3	96.3
NOV	7.7	1.0	8.7	105.0
DIC/ DEC	5.2	0.5	5.7	110.7
ENE/ JAN / 2007	7.2	0.1	7.3	7.3
FEB	6.5	0.5	7.0	14.3
MAR	8.1	1.0	9.1	23.4
ABR/ APR	8.3	1.5	9.8	33.2
MAY	9.1	1.4	10.5	43.7
JUN	8.8	1.3	10.1	53.8
JUL	7.9	1.3	9.2	63.0
AGO/ AUG	7.6	0.5	8.1	71.1
SEP	7.6	1.0	8.6	79.7
OCT	9.7	0.7	10.4	90.1
NOV	9.4	0.5	9.9	100.0
DIC/ DEC	4.9	0.4	5.3	105.3
ENE/ JAN / 2008	8.5	1.4	9.9	9.9
FEB	8.1	1.2	9.3	19.2
MAR	8.3	1.1	9.4	28.6
ABR/ APR	8.8	0.4	9.2	37.8
MAY	9.2	0.4	9.6	47.4
JUN	7.7	0.7	8.4	55.8
JUL	9.5	0.8	10.3	66.1
AGO/ AUG	8.4	0.6	9.0	75.1
SEP	7.8	0.7	8.5	83.6
OCT	7.5	0.4	7.9	91.5
NOV	6.3	0.4	6.7	98.2
DIC/ DEC	4.7	0.3	5.0	103.2
ENE/ JAN / 2009	8.2	0.0	8.2	8.2
FEB	8.9	0.4	9.3	17.5
MAR	8.9	0.8	9.7	27.2
ABR/ APR	8.3	0.8	9.1	36.3
MAY	7.9	0.0	7.9	44.2
JUN	5.0	0.3	5.3	49.5
JUL	7.7	0.3	8.0	57.5
AGO/ AUG	5.4	0.6	6.0	63.5
SEP	7.1	0.5	7.6	71.1
OCT	7.6	0.5	8.1	79.2
NOV	8.2	0.5	8.7	87.9
DIC/ DEC	3.1	0.3	3.4	91.3
ENE-DIC/ JAN-DEC / 2009	86.3	5.0	91.3	
ENE-DIC/ JAN-DEC / 2008	94.8	8.4	103.2	
VARIACION % / % VARIATION				
ENE-DIC/ JAN-DEC/ 2009-2008	-9.0	-40.5	-11.5	

FUENTE/ SOURCE: COMISION CHILENA DEL COBRE.

**ANTECEDENTES DE LOS CONTRATOS DE
EXPORTACIONES CHILENAS DE CONCENTRADOS
Y CATODOS DE COBRE /
CHILEAN COPPER CONCENTRATES AND CATHODES
EXPORT CONTRACTS INFORMATION**

Características de los contratos de exportación de concentrados 2009 Characteristics of 2009 concentrates export contracts

Crterios y definiciones / Criteria and definitions:

1. Tipo de Contrato / Type of Contract:

La clasificación es la siguiente / The classification is the following :

Tipo / type	Contratos incluidos / Included contracts
Abastecimiento Anual (1)	Anual / Annual
Abastecimiento Evergreen (2)	Evergreen
Abastecimiento Largo Plazo (3)	Largo plazo / Long term
Spot (4)	Spot

- (1) Venta con entrega durante todo el año. Normalmente, tienen los términos acordados para todas las cuotas.
/ Sale with delivery during all the year. Normally, they have the terms agreed for all the quotas.
- (2) Venta con compromiso de entrega superior a un año, con vigencia sujeta a renovación periódica por las partes. / Sale with commitment of delivery over a year, with duration depending to periodic renewal by the parts.
- (3) Venta con compromiso de entrega superior a un año, donde se fija la mayoría de las condiciones dejando algunos términos comerciales bajo negociación periódica durante la vida del contrato.
/ Sale with commitment of delivery over a year, where the majority of the conditions are fixed leaving some commercial terms for periodic negotiation during the life of the contract.
- (4) Venta ocasional. / Occasional Sale.

2. Q/P

Período de apreciación (Quotation Period), período que se toma como referencia para efectos de la valoración del producto. / Quotation Period, is the period taken as a reference in order to appraise the product.

En los contratos evergreen la relación contractual está siempre vigente, a diferencia de los contratos anuales que duran un período. / Evergreen contracts are always in force, meanwhile annual contracts last for only one period.

Los contratos de abastecimiento de largo plazo (más de un año), no necesariamente incorporan en el contrato inicial los Q/P; estos se establecen posteriormente. / Long-term supplies contract (more than one year), do not necessarily add Q/P to the initial contract; these are established lately.

Otra situación que genera desconocimiento inicial del Q/P a utilizar, corresponde a los contratos que incorporan una cláusula de opción de fijar el Q/P durante el período de vigencia del contrato. / Another situation leading to an initial disregard of the Q/P to be used, corresponds to contracts which incorporate a clause with the option to fix Q/P during the contract duration period.

Para efectos de agregar la información de los contratos se han sumado los Q/P según la siguiente tabla: / To add information of the contracts, Q/P have been added according to the following table:

Q/P	Definición/ Definition	Agrupados bajo:/ Grouped under:
A + 2	Segundo mes después del arribo / Second month upon arrival	A + 2
A + 3	Tercer mes después del arribo / Third month upon arrival	A + 3
EFE	Entre fechas distintas a mensual / Between dates different to monthly	EFE
M / M + 3	Tercer mes después del M / Thirth month following to the M	M / M + 3
M / M + 4	Cuarto mes después del M / Fourth month following to the M	M / M + 4
MEE / EMS + 4	Cuarto mes después del MEE / Fourth month following to the EMS	MEE / EMS + 4
A + 1	Primer mes después del arribo / First month upon arrival	Otros/ Other
A + 4	Cuarto mes después del arribo / Fourth month upon arrival	
A + 5	Quinto mes después del arribo / Fifth month upon arrival	
M / M	Mes contractual de embarque / Contractual month of shipment	
M / M + 1	Primer mes después del M / First month following to the M	
M / M + 2	Segundo mes después del M / Second month following to the M	
M / M + 5	Quinto mes después del M / Fifth month following to the M	
M / M + 6	Sexto mes después del M / Sixth month following to the M	
M / M - 1	Primer mes anterior al M / First month prior to the M	
M / M - 2	Segundo mes anterior al M / Second month prior to the M	
MEE / EMS + 1	Primer mes después del MEE / First month following to the EMS	
MEE / EMS + 3	Tercer mes después del MEE / Thirth month following to the EMS	
MEE / EMS + 5	Quinto mes después del MEE / Fifth month following to the EMS	
PRFIJO	Precio fijo/ Fixed price	

Definiciones / Definitions:

MEE: Mes efectivo del embarque / EMS: Effective month of shipment

Nota: Las exportaciones de concentrados informadas a la fecha, están sujetas a eventuales modificaciones que podrían realizar los exportadores./ Note: Concentrates exports informed up to date, are subject to eventual modifications by the exporters.

COMPROMISOS DE EXPORTACION DE CONCENTRADOS DE COBRE
Tonelage y TC-RC Comprometido: Año 2009
COPPER CONCENTRATES EXPORT AGREEMENTS
Tonnage and TC-RC Agreed in Year 2009

I. SEGUN TIPO DE CONTRATO Y REGION / BY TYPE OF CONTRACT AND REGION

TONELAJE (TMS) / TONNAGE (MT) (1)		DESTINO CONTRACTUAL / CONTRACTUAL DESTINATION				
Tipo de Contrato / Type of Contract		ASIA	EUROPA / Europe	Sudamérica y otros / South America and Others	Comerciantes/ Trader	TOTAL
Abastecimiento / Supply		2,374,517	671,804	142,163	0	3,188,484
Abastecimiento Anual		362,030	111,000			473,030
Abastecimiento Evergreen		627,041	246,284			873,325
Abastecimiento Largo Plazo		1,385,446	314,520	142,163		1,842,129
Spot		573,800	129,500	166,000	40,000	909,300
Total contratos / Total contracts (1)		2,948,317	801,304	308,163	40,000	4,097,784
TC - RC (2)		DESTINO CONTRACTUAL / CONTRACTUAL DESTINATION				
Tipo de Contrato / Type of Contract		ASIA	EUROPA / Europe	Sudamérica y otros / South America and Others	Comerciantes/ Trader	TOTAL
Abastecimiento / Supply						
TC ponderado (US\$/TM) / Weighted TC (USD/MT)		60.4	66.4	62.5		61.8
Abastecimiento Anual		62.7	64.7			63.2
Abastecimiento Evergreen		59.1	71.7			62.7
Abastecimiento Largo Plazo		60.3	62.9	62.5		61.0
TC Minimo / Maximo (Low / High)		(42,0 ; 77,4)	(45,0 ; 85,0)	(45,0 ; 75,0)		(42,0 ; 85,0)
RC ponderado (¢/lb) / Weighted RC (¢/lb)		6.0	6.6	6.2		6.2
Abastecimiento Anual		6.0	6.5			6.1
Abastecimiento Evergreen		5.9	7.2			6.3
Abastecimiento Largo Plazo		6.1	6.3	6.2		6.1
RC Minimo / Maximo (Low / High)		(2,9 ; 8,3)	(4,5 ; 8,5)	(4,5 ; 7,5)		(2,9 ; 8,5)
Spot						
TC ponderado (US\$/TM) / Weighted TC (USD/MT)		50.2	34.4	46.5	55.0	47.3
Minimo / Maximo (Low / High)		(6,0 ; 165,0)	(8,0 ; 70,0)	(5,0 ; 75,0)	(45,0 ; 65,0)	(5,0 ; 165,0)
RC ponderado (¢/lb) / Weighted RC (¢/lb)		4.9	3.3	4.6	5.5	4.7
Minimo / Maximo (Low / High)		(0,6 ; 13,0)	(0,8 ; 7,0)	(0,5 ; 7,5)	(4,5 ; 6,5)	(0,5 ; 13,0)
Total						
TC ponderado (US\$/TM) / Weighted TC (USD/MT)		58.4	61.2	53.8	55.0	58.6
RC ponderado (¢/lb) / Weighted RC (¢/lb)		5.8	6.1	5.4	5.5	5.8

II. SEGUN Q/P Y REGION / BY Q/P AND REGION

TONELAJE (TMS) / TONNAGE (MT) (2)		DESTINO CONTRACTUAL / CONTRACTUAL DESTINATION				
Q/P (3)		ASIA	EUROPA / Europe	Sudamérica y otros / South America and Others	Comerciantes/ Trader	TOTAL
A+2		140,011	28,000			168,011
A+3		1,137,148	110,000			1,247,148
EFE		64,500	183,307			247,807
M+3		349,500	100,000	237,298		686,798
M+4		528,900	45,000	40,000	40,000	653,900
MEE+4		93,926	108,977			202,903
OTROS (4)		634,332	226,020	30,865		891,217
Total		2,948,317	801,304	308,163	40,000	4,097,784

TC - RC (2)		DESTINO CONTRACTUAL / CONTRACTUAL DESTINATION				
Q/P (3)		ASIA	EUROPA / Europe	Sudamérica y otros / South America and Others	Comerciantes/ Trader	TOTAL
A+2						
TC ponderado (US\$/TM) / Weighted TC (USD/MT)		50.2	60.0			51.8
RC ponderado (¢/lb) / Weighted RC (¢/lb)		5.0	6.0			5.2
A+3						
TC ponderado (US\$/TM) / Weighted TC (USD/MT)		59.1	64.5			59.6
RC ponderado (¢/lb) / Weighted RC (¢/lb)		5.9	6.3			5.9
EFE						
TC ponderado (US\$/TM) / Weighted TC (USD/MT)		63.0	75.0			71.9
RC ponderado (¢/lb) / Weighted RC (¢/lb)		6.3	7.5			7.2
M+3						
TC ponderado (US\$/TM) / Weighted TC (USD/MT)		62.6	61.3	60.8		61.7
RC ponderado (¢/lb) / Weighted RC (¢/lb)		6.3	6.1	6.1		6.2
M+4						
TC ponderado (US\$/TM) / Weighted TC (USD/MT)		62.3	46.3	21.3	55.0	58.0
RC ponderado (¢/lb) / Weighted RC (¢/lb)		6.2	4.6	2.1	5.5	5.8
MEE+4						
TC ponderado (US\$/TM) / Weighted TC (USD/MT)		62.2	61.3			61.7
RC ponderado (¢/lb) / Weighted RC (¢/lb)		6.2	6.1			6.2
OTROS (4)						
TC ponderado (US\$/TM) / Weighted TC (USD/MT)		53.0	51.6	42.3		52.2
RC ponderado (¢/lb) / Weighted RC (¢/lb)		5.1	5.2	4.2		5.1
Total						
TC ponderado (US\$/TM) / Weighted TC (USD/MT)		58.4	61.2	53.8	55.0	58.6
RC ponderado (¢/lb) / Weighted RC (¢/lb)		5.8	6.1	5.4	5.5	5.8

Cifras provisionarias. Ver características de los contratos para los Q/P. / Provisional figures. Please review contracts for Q/P characteristics.

(1) Incluye todos los contratos registrados a la fecha. / Includes contracts registered up date.

(2) Se excluyen contratos sin informacion y casos especiales. / Excludes contracts without information and special cases.

(3) Condiciones incluidas según su importancia relativa en los Q/P totales. / Included conditions depends on relative importance on Q/P.

(4) Otros/ Others.A+1, A+4, A+5, M, M+1, M+2, M+5,M+6,M-1, M-2 MEE+1, MEE3, MEE+5 y PREFIJO..

Características de los contratos de exportación de cátodos 2009 Characteristics of 2009 cathodes export contracts

Criterios y definiciones / Criteria and definitions:

1. Tipo de Producto / Type of Product:

Los cátodos estándar incluyen tanto a aquellos con defectos físicos como los que no se encuentran registrados en Bolsas de Metales. El cátodo grado A corresponde a aquel registrado en Bolsa de Metales / Standard cathodes includes those with physical defects and those not registered in Metal Exchanges. A grade cathode corresponds to those registered in Metal Exchanges.

2. Q/P

Período de apreciación (Quotation Period), período que se toma como referencia para efectos de la valoración del producto. Para efectos de agregar la información de los contratos se han sumado los Q/P según la siguiente tabla:/ The Quotation Period, is the period taken as a reference in order to appraise the product. To add to the information of the contracts, the Q/P have been added according to the following table:

Q/P	Definición/ Definition	Agrupados bajo:/ Crowed under:
EFE	Entre fechas distintas a mensual/ Between dates different to monthly	EFE
M / M	Mes contractual de embarque/ Contractual month of shipment	M / M
M / M + 1	Mes siguiente al M / Month following to the M	M / M +1
A + 1	Primer mes después del arribo / First month upon arrival	Otros/ Other
M / M - 1	Primer mes anterior al M / First month prior to the M	
M / M + 2	Segundo mes luego del M / Second month following to the M	
M / M +3	Tercer mes luego del M / Thirth month following to the M	
PRFIJO	Precio fijo/ Fixed price	

Nota: Las exportaciones de cátodos informadas a la fecha, están sujetas a eventuales modificaciones que podrían realizar los exportadores./ Note: Cathodes exports informed up to date, are subject to eventual modifications by the exporters.

COMPROMISOS DE EXPORTACION DE CATODOS DE COBRE
Tonelaje y Premio Comprometido: Año 2009
COPPER CATHODES EXPORT AGREEMENTS
Tonnage and Premium Agreed in Year 2009

I. SEGUN TIPO DE CONTRATO Y PRODUCTO/ BY TYPE OF CONTRACT AND PRODUCT

TONELAJE / TONNAGE (MT)	DESTINO CONTRACTUAL / CONTRACTUAL DESTINATION					TOTAL
	ASIA	EUROPA / Europe	Norteamérica / North America	Sudamérica y otros / South America and Others	Comerciantes/ Trader	
Tipo de Contrato-Producto / Type of Contract -Product						
Abastecimiento / Supply						
Estándar / Standard	171,120	102,938	12,850	21,750	8,750	317,408
Grado A / A Grade	1,019,004	389,850	159,733	152,120	75,953	1,796,660
Off Grade	44,510	32,109	2,925	14,000		93,544
Total abastecimiento / Total supply	1,234,634	524,897	175,508	187,870	84,703	2,207,612
Spot						
Estándar / Standard	101,523	36,442	14,152	2,733	45,301	200,151
Grado A / A Grade	246,207	111,041	60,892	16,775	179,871	614,786
Off Grade	50,321	17,235	28,337	2,700	17,250	115,843
Total spot	398,051	164,718	103,381	22,208	242,422	930,781
Total contratos / Total contracts	1,632,685	689,615	278,889	210,078	327,125	3,138,393

PREMIO PONDERADO / WEIGHTED PREMIUM (USD)	DESTINO CONTRACTUAL / CONTRACTUAL DESTINATION					TOTAL
	ASIA	EUROPA / Europe	Norteamérica / North America	Sudamérica y otros / South America and Others	Comerciantes/ Trader	
Tipo de Contrato-Producto / Type of Contract -Product						
Abastecimiento / Supply						
Estándar / Standard	33.0	61.0	64.9	32.9	30.0	53.4
Grado A / A Grade	102.5	101.7	104.2	30.6	85.9	100.9
Off Grade	-7.8	-8.4	-110.0	-127.8		-9.9
Promedio abastecimiento / Supply average	98.3	67.4	103.4	23.9	82.0	89.9
Mínimo / Máximo (Low / High)	(-190.0 ; 150.0)	(-182.0 ; 150.0)	(-110.0 ; 150.0)	(-170.0 ; 160.0)	(-70.0 ; 150.0)	(-190.0 ; 160.0)
Spot						
Estándar / Standard	80.8	29.9	103.7	-40.0	-51.2	59.3
Grado A / A Grade	74.9	65.2	50.1	31.7	73.4	69.8
Off Grade	-17.7	-28.6	-0.5	-114.5	-172.2	-44.5
Promedio spot / Spot average	68.9	52.9	56.4	-8.7	31.5	57.3
Mínimo / Máximo (Low / High)	(-165.0 ; 200.0)	(-150.0 ; 121.5)	(-147.0 ; 160.0)	(-147.0 ; 160.0)	(-250.0 ; 145.0)	(-250.0 ; 200.0)
Promedio Total / Total average	96.7	66.4	100.6	22.4	57.7	87.7

II. SEGUN BOLSAS DE METALES Y Q/P / BY METAL EXCHANGES AND Q/P

TONELAJE / TONNAGE (MT)	DESTINO CONTRACTUAL / CONTRACTUAL DESTINATION					TOTAL
	ASIA	EUROPA / Europe	Norteamérica / North America	Sudamérica y otros / South America and Others	Comerciantes/ Trader	
Bolsa - Q/P / Exchange - Q/P (1)						
LME	1,632,685	689,615	117,544	176,078	327,125	2,943,048
EFE	78,761	110,291	12,742	26,350	28,750	256,894
M / M	69,785	65,191	40,600	31,000	68,996	275,572
M+1 M.+1	1,413,856	506,761	54,202	98,890	229,379	2,303,088
Otros Q/P / Other Q/P (2)	70,283	7,372	10,000	19,838	0	107,493
COMEX	0	0	161,345	34,000	0	195,345
EFE			2,257	2,000		4,257
M / M						0
M+1 M.+1			138,568	11,500		150,068
Otros Q/P / Other Q/P (2)			20,520	20,500		41,020
Total	1,632,685	689,615	278,889	210,078	327,125	3,138,393

PREMIO PONDERADO / WEIGHTED PREMIUM (USD)	DESTINO CONTRACTUAL / CONTRACTUAL DESTINATION					TOTAL
	ASIA	EUROPA / Europe	Norteamérica / North America	Sudamérica y otros / South America and Others	Comerciantes/ Trader	
Bolsa - Q/P / Exchange - Q/P (1)						
LME						
EFE	73.4	67.5	93.7	-108.7	60.5	60.3
M / M	79.8	18.7	68.5	15.0	39.9	43.3
M+1 M.+1	97.4	68.1	106.2	34.0	60.5	90.1
Otros Q/P / Other Q/P (2)	63.2	64.7		6.2		54.2
Promedio LME / LME Average	96.7	66.4	104.8	16.7	57.7	88.3
COMEX						
EFE			21.3	39.7		36.3
M / M						
M+1 M.+1			26.7	40.4		30.3
Otros Q/P / Other Q/P (2)			42.5	41.0		41.5
Promedio COMEX / COMEX Average			29.9	40.7		34.8
Promedio Total / Total average	96.7	66.4	100.6	22.4	57.7	87.7

Cifras provisionarias. Ver características de los contratos para los Q/P. / Provisional figures. Please review contracts for Q/P characteristics

(1) Condiciones incluidas según su importancia relativa en los Q/P totales. / Included conditions depends on relative importance on Q/P

(2) Otros/ Others A+1, M-1, M+2, M+3 y PREFIJO.

Fuente / Source: Elaborado por la Comisión Chilena del Cobre

Este trabajo fue efectuado por:

Juan Ocaranza A.
Juan Ciudad L.
Oscar Arce U.

FEBRERO, 2010 - FEBRUARY, 2010